

CUSTOMER APPROVAL

THE CUSTOMER HAS REVIEWED THIS DRAWING AND VERIFIED THE ACCURACY OF ALL INFORMATION AND DIMENSIONS.

SIGNED: \_\_\_\_\_

DATE: \_\_\_\_\_

GENERAL SPECIFICATIONS

QUANTITY: ONE (1)

MODEL: PGI-15000-2 AR

CAPACITY: 15,000 GALLONS

TYPE: SINGLE WALL, ABOVEGROUND

MATERIAL: 1/4" CARBON STEEL

LAP FIT AND WELD INTERIOR AND EXTERIOR SEAMS

SURFACE PREP: SSPC-SP 10 BLAST INTERIOR SURFACES  
SSPC-SP 6 BLAST EXTERIOR SURFACES

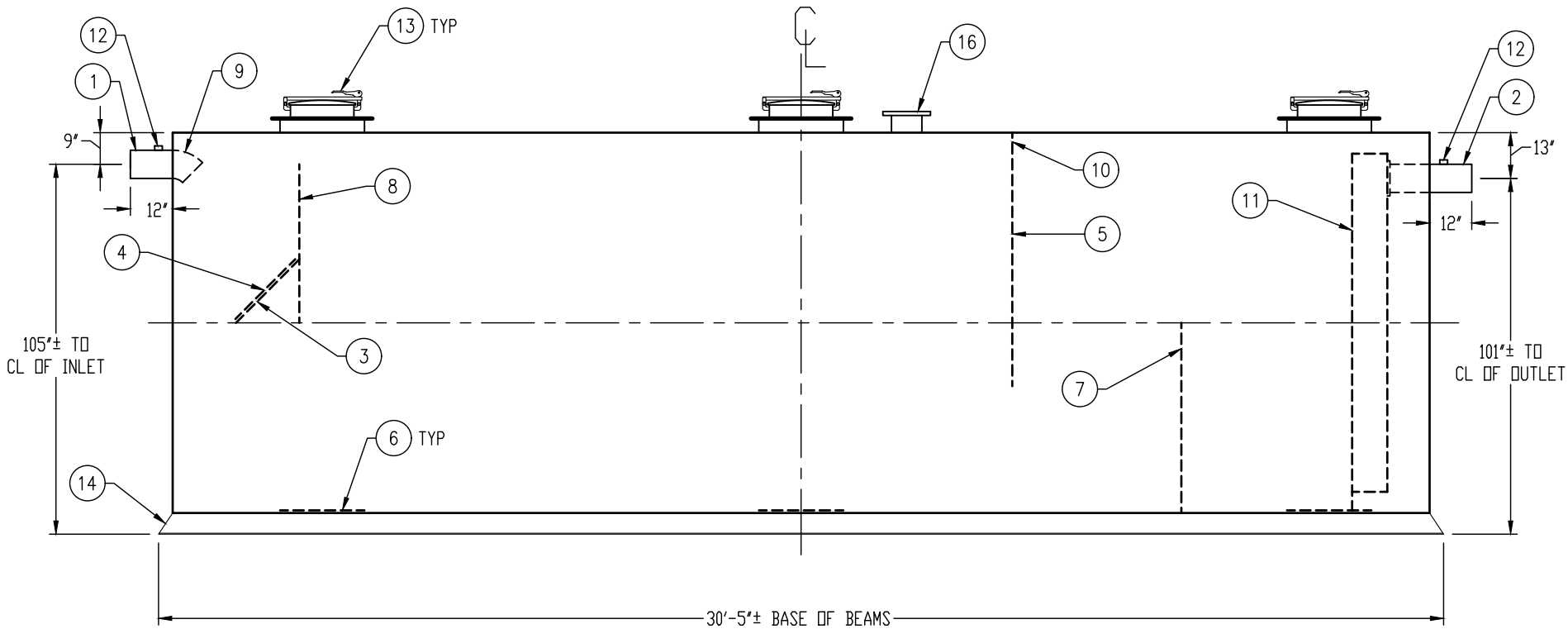
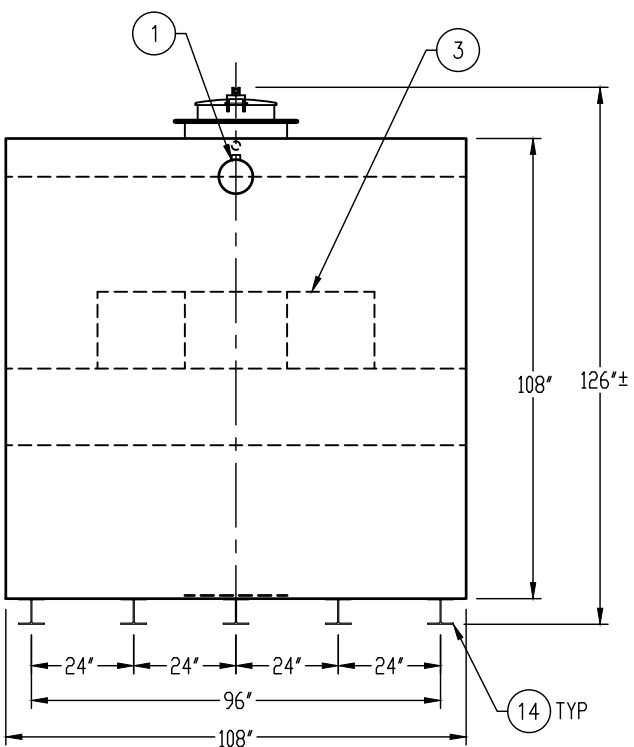
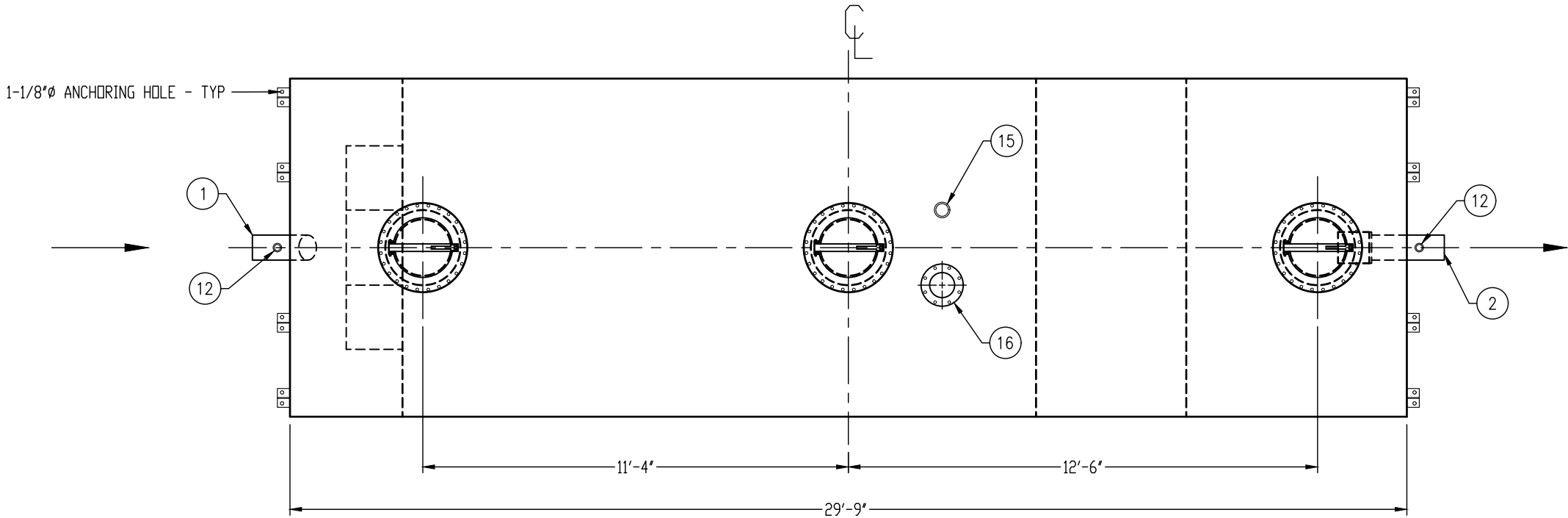
EXT. COATING: WHITE URETHANE - 3-5 MILS

INT. COATING: CHEMTHANE 4200 PW (15 MILS DFT)

OPERATING PRESSURE: ATMOSPHERIC

GREASE HOLDING CAPACITY: 38,475 LBS

- PROVIDED EQUIPMENT
1. 8"Ø SCH 40 PIPE STUB - INLET
  2. 8"Ø SCH 40 PIPE STUB - OUTLET
  3. DIFFUSION PLATE - 1/4"
  4. 24" x 24" WEAR PLATE - 1/4"
  5. GREASE DAM - 1/4"
  6. STRIKER PLATE
  7. SLUDGE BAFFLE - 1/4"
  8. UNDERFLOW BAFFLE - 1/4"
  9. 8"Ø 45° DIFFUSION ELBOW
  10. 2"Ø OPENING FOR AIR CIRCULATION
  11. STEEL OUTLET DOWNCOMER BAFFLE WITH OPEN TOP
  12. 2" HC - VENT
  13. 24"Ø MANWAY WITH 18" EASY-ACCESS HATCH
  14. (5) W6x15 BEAM RUNNER WITH (2) 1-1/8" HOLES AT EACH TAPERED END FOR ANCHORING
  15. 4" HC - NORMAL TANK VENT
  16. 8"Ø-150# FFSO FLANGE FOR EMERGENCY VENT



NOTE:  
ALL RIGHTS RESERVED. THIS DRAWING, OR ANY PART THEREOF, MUST NOT BE REPRODUCED IN ANY FORM WITHOUT WRITTEN PERMISSION FROM HIGHLAND TANK. UNLESS OTHERWISE NOTED, HIGHLAND TANK SHALL BE RESPONSIBLE ONLY FOR ITEMS INDICATED ON THIS FABRICATION DRAWING. THE CUSTOMER IS RESPONSIBLE FOR VERIFYING THE CORRECTNESS OF THE TYPE, SIZE, AND LOCATION OF ALL FITTINGS, ACCESSORIES, AND COATINGS SHOWN ON THIS DRAWING.



PASSIVE GREASE INTERCEPTOR  
15,000 GALLON DOUBLE-BASIN

CUSTOMER: \_\_\_\_\_

PROJECT: \_\_\_\_\_

QUOTE NO.: \_\_\_\_\_ ORDER: \_\_\_\_\_

SCALE: \_\_\_\_\_ DATE: 3/9/20 DWG. BY: MGS DWG. NO.: PGI-15000-2 AR

DIMENSION TOLERANCE: ± 1"