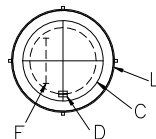


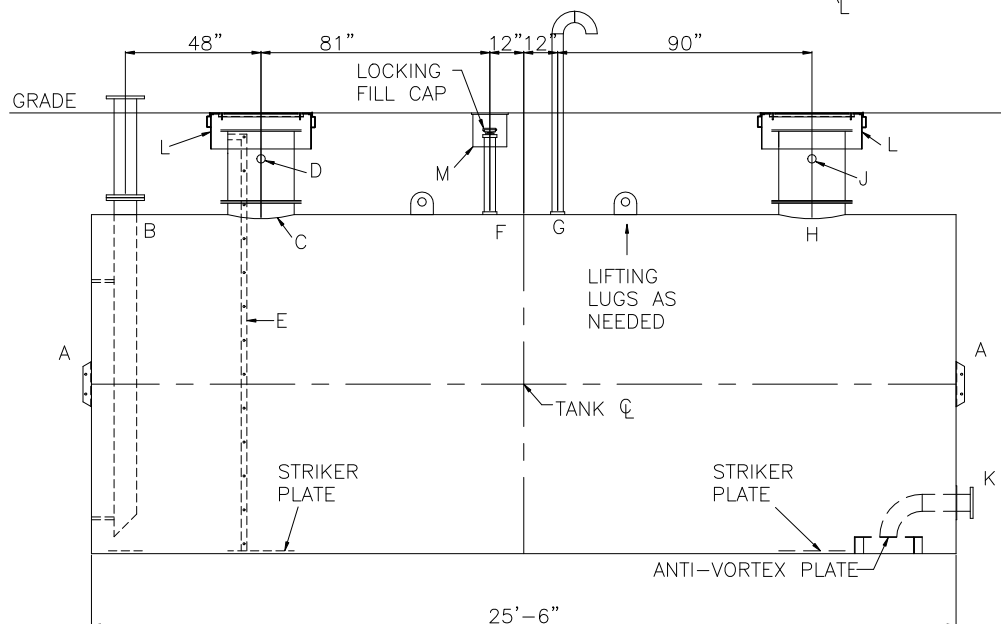
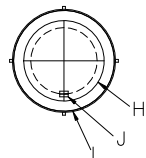
GRADE LEVEL MANWAY
COVER PLATE NOT
SHOWN THIS VIEW

TOP VIEW OF
THE MANWAY

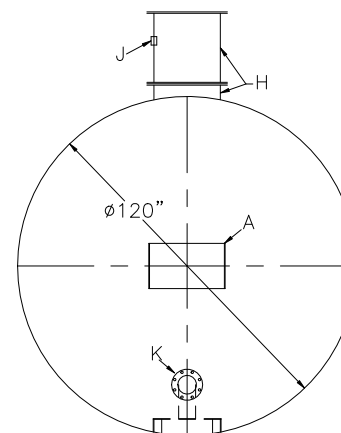


GRADE LEVEL MANWAY
COVER PLATE NOT
SHOWN THIS VIEW

TOP VIEW OF
THE MANWAY



GRADE LEVEL MANWAY
NOT SHOWN THIS VIEW



DESIGN DATA

| |
|---|
| CAPACITY – 15,000 GALLONS |
| TYPE – SINGLE WALL, HIGHGUARD UNDERGROUND |
| NO. REQ. – – |
| OPERATING PRESSURE – ATMOSPHERIC |
| TANK MATERIAL – MILD CARBON STEEL |
| THICKNESS – HEADS– 1/4" |
| THICKNESS – SHELL– 5/16" |
| *GA THK. BASED ON 60" MAX. BURIAL DEPTH |
| CONSTRUCTION – FLAT FLANGED HEADS, LAP WELD INSIDE & OUTSIDE |
| TANK TEST – 5 PSIG |
| INT. FINISH – SP10 BLAST HighDRO®-LINER PLUS FOR NSF 61 APPLICATIONS |
| EXT. FINISH – SP6 BLAST, 75 MILS POLYURETHANE |
| LABEL – UL-1746 PART IV, HIGHGUARD |

NOTES:

- 1) THE HIGHGUARD TANK IS NOT APPROVED FOR THE STORAGE OF HEATED PRODUCTS.
- 2) 15,000 VOLT SPARK TEST PROVIDED AT FACTORY.
- 3) SHOP TO INSTALL 1/4"x12"x12" STRIKER PLATES, ROLLED AND SEAL WELD TO THE TANK.

LEGEND

| | | | |
|---|--|---|---|
| A | HTM SPIN BRK'T – MFG USE ONLY – NOT TO BE USED FOR FIELD INSTALLATION | F | 2" FNPT FITTING W/ 2" SCH 40 RISER PIPE (FOR LEVEL SENSOR) |
| | | G | FNPT FITTING w/ GOOSENECK VENT (VENT CONNECTION) |
| B | FILL CONNECTION – RFSO 150# FLANGE w/ STD. WEIGHT RISER PIPE & INTERNAL DROP PIPE TO WITH IN 6" OF TANK BOTTOM, MITER END 45° (FILL) | H | 24"ø TIGHT BOLT MANWAY w/ 1/8" THK. EPDM GASKET MATERIAL & MANWAY EXTENSION |
| | | J | 2" FNPT FITTING (MANWAY VENT) |
| C | 24"ø TIGHT BOLT MANWAY w/ 1/8" THK. EPDM GASKET MATERIAL & MANWAY EXTENSION | K | 6" RFSO 150# FLANGE w/ ANTI-VORTEX PLATE PER NFPA 22 (SUCTION) |
| D | 2" FNPT FITTING (MANWAY VENT) | L | 36"ø GRADE LEVEL MANWAY |
| E | 16" WIDE STAINLESS STEEL INTERNAL LADDER w/ 3/4" RUNGS ON 12" SPACING | M | 12"ø GRADE LEVEL MANWAY |

NOTE: ALL RIGHTS RESERVED. THIS DRAWING MUST NOT BE REPRODUCED IN ANY FORM WITHOUT THE WRITTEN PERMISSION OF HIGHLAND TANK®. HIGHLAND TANK® SHALL BE RESPONSIBLE ONLY FOR ITEMS INDICATED ON THIS FABRICATION DRAWING UNLESS OTHERWISE NOTED. CUSTOMER IS RESPONSIBLE FOR VERIFYING CORRECTNESS OF SIZE AND LOCATION OF FITTINGS, ACCESSORIES, AND COATINGS SHOWN ON THIS DRAWING.

| | | | |
|--|-------|----------------------|------------------------------|
|  | | Highland Tank | |
| UNLESS NOTED, TOLERANCES ARE +/- 1" | | | |
| HighDRO® WATER STORAGE TANK | | | |
| 15,000 GAL 120"Ø SINGLE-WALL UNDERGROUND HORIZONTAL FOR FIRE PROTECTION WITH BOTTOM DRAIN | | | |
| CUSTOMER: | | | |
| PROJECT: | | | |
| QUOTE NO: | | CHK'D BY: | |
| SCALE: 1/4"=1'-0" | DATE: | DWG. BY: | DWG. NO: 15000HGSWHDFPTBD120 |