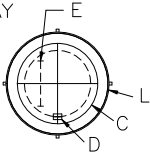


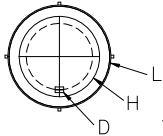
GRADE LEVEL MANWAY  
COVER PLATE NOT  
SHOWN THIS VIEW

TOP VIEW OF  
THE MANWAY



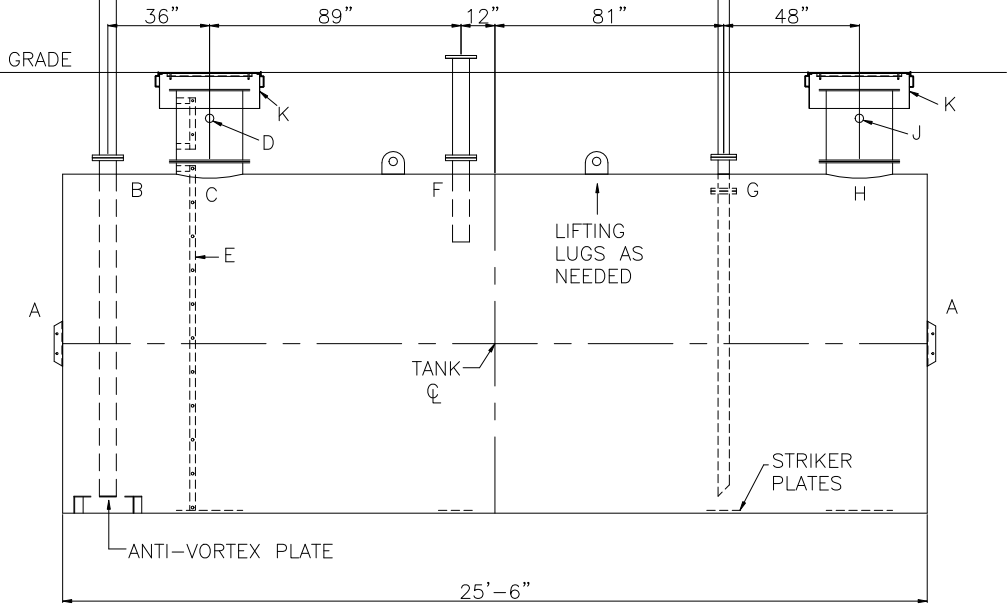
GRADE LEVEL MANWAY  
COVER PLATE NOT  
SHOWN THIS VIEW

TOP VIEW OF  
THE MANWAY

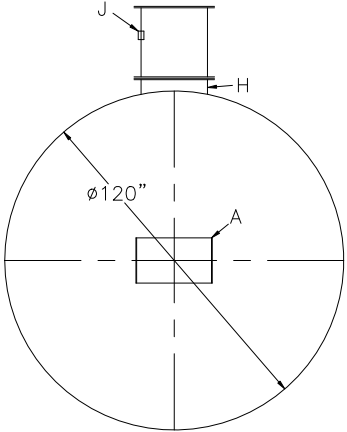


SINGLE OR  
DOUBLE STORZ  
CONNECTION

SINGLE STORZ  
CONNECTION



GRADE LEVEL  
MANWAY NOT  
SHOWN THIS  
VIEW



- NOTES:
- 1) THE HIGHGUARD TANK IS NOT APPROVED FOR THE STORAGE OF HEATED PRODUCTS.
  - 2) 15,000 VOLT SPARK TEST PROVIDED AT FACTORY.
  - 3) SHOP TO INSTALL 1/4"x12"x12" STRIKER PLATES, ROLLED AND SEAL WELD TO THE TANK.

DESIGN DATA

CAPACITY – 15,000 GALLONS
TYPE – SINGLE WALL, HIGHGUARD UNDERGROUND
NO. REQ. – –
OPERATING PRESSURE – ATMOSPHERIC
TANK MATERIAL – MILD CARBON STEEL
THICKNESS INNER –HEADS: 1/4" GA, SHELL: 1/4"
THICKNESS OUTER –HEADS: 1/4", SHELL: 10 GA
*GA THK. BASED ON 60" MAX. BURIAL DEPTH
CONSTRUCTION – FLAT FLANGED HEADS, LAP WELD INSIDE & OUTSIDE
TANK TEST – 5 PSIG
INT. FINISH – SP10 BLAST HighDRO®-LINER PLUS FOR NSF 61 APPLICATIONS
EXT. FINISH – SP6 BLAST, 75 MILS POLYURETHANE
LABEL – UL-1746 PART IV, HIGHGUARD

LEGEND

A	HTM SPIN BRK'T – MFG USE ONLY – NOT TO BE USED FOR FIELD INSTALLATION	G	RFSO FLANGE INSIDE AND OUTSIDE WITH STD. WEIGHT CARBON STEEL INTERNAL DROP PIPE TO WITHIN 6" OF TANK BOTTOM, MITER 45°, & EXTERNAL RISER PIPE STD. WEIGHT CARBON STEEL WITH STORZ SINGLE OR DOUBLE CONNECTION (FIRE DEPT. CONNECTION/ FILL)
B	RFSO 150# FLANGE INSIDE AND OUTSIDE w/ INTERNAL STD. WEIGHT DROP PIPE WITH NFPA 22 ANTI-VORTEX PLATE AND EXTERNAL STD. WEIGHT CARBON STEEL RISER PIPE WITH LOCKING CAP (SUCTION)	H	24"Ø TIGHT BOLT MANWAY w/ 1/8" THK. EPDM GASKET
C	24"Ø TIGHT BOLT MANWAY w/ 1/8" THK. EPDM GASKET	J	2" FNPT FITTING (MANWAY VENT USE)
D	2" FNPT FITTING (MANWAY VENT USE)	K	36"Ø GRADE LEVEL MANWAY
E	16" WIDE INTERNAL LADDER W/ 3/4" RUNGS ON 12" SPACING.		
F	RFSO FLANGE w/ 24" LONG STD. WEIGHT INTERNAL PIPE & EXTERNAL FLANGED SPOOL STD WEIGHT RISER PIPE (VENT/ LEVEL INDICATOR ASSEMBLY)		

# Highland Tank

UNLESS NOTED, TOLERANCES ARE +/- 1"

## HighDRO® WATER STORAGE TANK

15,000 GAL 120"Ø UNDERGROUND SINGLE-WALL HORIZONTAL  
FOR FIRE PROTECTION WITH VERTICAL SUCTION

CUSTOMER:

PROJECT:

QUOTE NO:

SCALE: 1/4"=1'-0" DATE: DWG. BY: DWG. NO: 15000HGSWHDFPTVS120

CHK'D BY: