

GENERAL SPECIFICATIONS

QUANTITY: ONE (1)
MODEL: RCT-15000-96
CAPACITY: 15,000 GALLONS
TYPE: SINGLE WALL, HIGHGUARD, UNDERGROUND
MATERIAL: 1/4" CARBON STEEL
GAUGE OF MATERIAL BASED ON 60" MAX. BURIAL DEPTH
LAP FIT AND WELD INTERIOR AND EXTERIOR SEAMS
TANK TEST: 3-5 PSI AIR TEST
SURFACE PREP: SSPC-SP 10 BLAST INTERIOR SURFACES
SSPC-SP 6 BLAST EXTERIOR SURFACES
COATING, EXTERIOR: HIGHGUARD POLYURETHANE-75 MILS
COATING, INTERIOR:
HighDRO®- LINER PLUS POLYURETHANE - 15 MILS
OPERATING PRESSURE: ATMOSPHERIC

PROVIDED EQUIPMENT

1. 12"Ø SCH 40 PIPE STUB - INLET
2. 12"Ø SCH 40 PIPE STUB - OVERFLOW
3. 12"Ø 45° DIFFUSION ELBOW
4. UNDERFLOW BAFFLE - 1/4"
5. DIFFUSION PLATE - 1/4"
6. 24" x 24" WEAR PLATE - 1/4"
7. STRIKER PLATE
8. STAINLESS STEEL LADDER - 16" WIDE
9. 24"Ø MANWAY WITH BOLT-ON RISER
10. 2" HC - VENT
11. 2" FC FOR WIRING
12. 4" HC GAUGE FTG
13. 36"Ø GRADE-LEVEL MANWAY - SHIPPED LOOSE
14. 36" x 36" MANWAY WITH BOLT-ON EXTENSION
15. 48" x 48" GRADE-LEVEL MANWAY - SHIPPED LOOSE
16. 6" HC TANK VENT
17. (8) CDA-15 CONCRETE DEADMAN
18. (8) POLYESTER HOLD-DOWN STRAPS

THIS DRAWING IS SUBJECT TO CHANGE AT THE DISCRETION OF THE MANUFACTURER. CONTACT HIGHLAND TANK FOR THE MOST UP-TO-DATE INFORMATION AND DRAWINGS OF OUR PRODUCTS.



Highland Tank®

HighDRO®-PURE RAINWATER HARVESTING SYSTEM
15,000 GALLON CISTERN TANK

CUSTOMER:

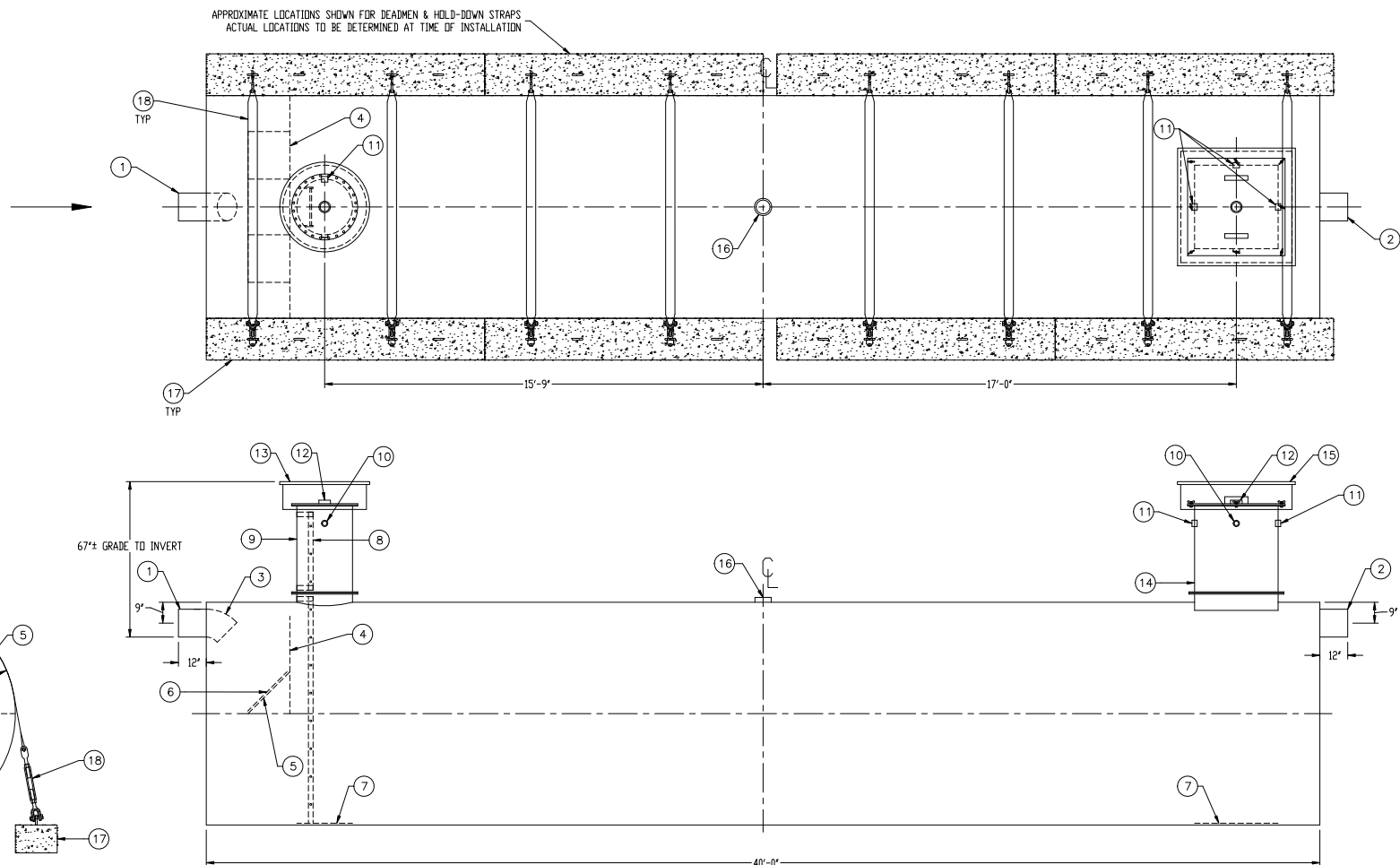
PROJECT:

QUOTE NO:

ORDER#:

SCALE: DATE: DWG. BY: DWG. NO:
NTS 1/24/17 MGS RCT-15000-96

DIMENSION TOLERANCE: ± 1"



APPROXIMATE LOCATIONS SHOWN FOR DEADMEN & HOLD-DOWN STRAPS
ACTUAL LOCATIONS TO BE DETERMINED AT TIME OF INSTALLATION

18
TYP

1

4

11

16

11

2

17
TYP

15'-9"

17'-0"

13

12

10

9

8

1

3

6

5

7

16

10

12

15

11

11

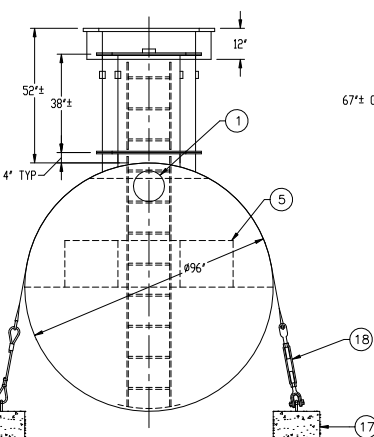
14

2

12

15

7



67"± GRADE TO INVERT

9'

12'

12'

9'

40'-0"

NOTE:
ALL RIGHTS RESERVED. THIS DRAWING, OR ANY PART THEREOF, MUST NOT BE REPRODUCED IN ANY FORM WITHOUT WRITTEN PERMISSION FROM HIGHLAND TANK. UNLESS OTHERWISE NOTED, HIGHLAND TANK SHALL BE RESPONSIBLE ONLY FOR ITEMS INDICATED ON THIS FABRICATION DRAWING. THE CUSTOMER IS RESPONSIBLE FOR VERIFYING THE CORRECTNESS OF THE TYPE, SIZE, AND LOCATION OF ALL FITTINGS, ACCESSORIES, AND COATINGS SHOWN IN THIS DRAWING.