

GENERAL SPECIFICATIONS

NO. REQ'D: (1)  
CAPACITY: 15,000 GALLONS  
TYPE: HT, HIGHGUARD, SINGLE WALL, "J" SERIES  
MATERIAL: MILD CARBON STEEL  
FLOW RATE: 1500 GPM

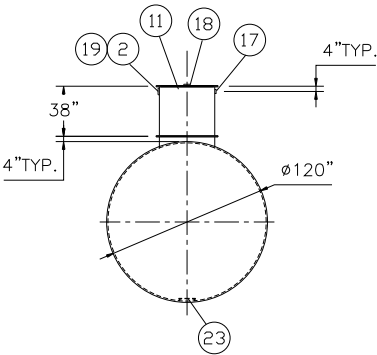
GAUGE:  
SHELL- 1/4"  
HEADS- 1/4"

SURFACE PREP:  
- SSPC NO.6 BLAST ALL EXTERIOR SURFACES  
- SSPC NO.10 BLAST ALL INTERIOR SURFACES  
OF WATER CHAMBER ONLY

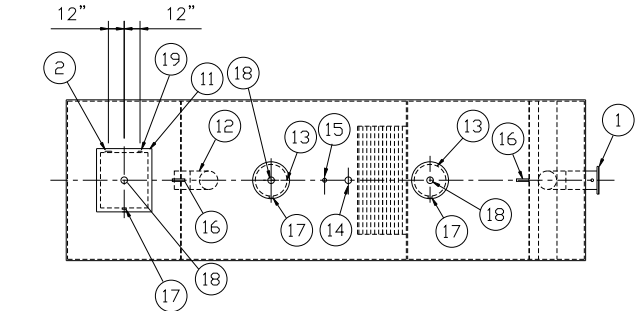
COATING: MATERIAL THICKNESS  
EXTERIOR- HIGHGUARD (75 MILS)  
INTERIOR- POLYURETHANE (15 MILS)  
INTERIOR OF WATER  
CHAMBER ONLY

CONSTRUCTION : LAP FIT AND WELD ALL EXTERIOR SEAMS  
OPERATING PRESSURE: ATMOSPHERIC

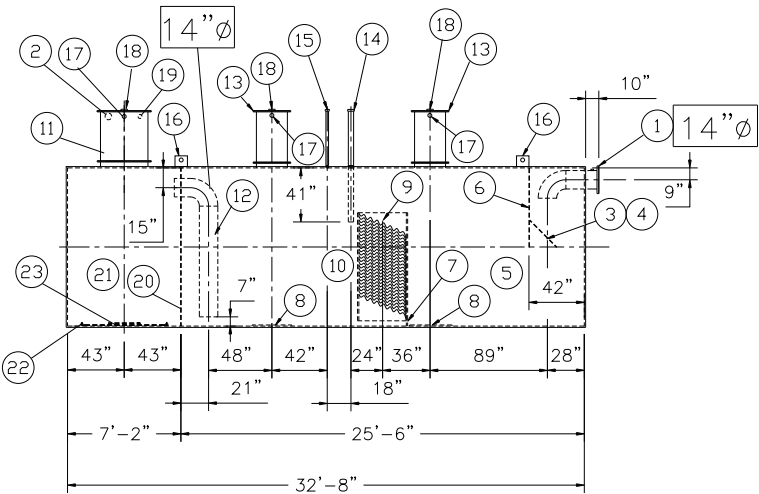
NOTES:  
1. POLYURETHANE HIGHGUARD TANK IS NOT APPROVED  
FOR THE STORAGE OF HEATED PRODUCTS  
2. CUSTOMER TO PROVIDE PUMPING INFORMATION  
FOR PROPER PUMP SIZING & PUMPOUT DESIGN.  
3. 15000 VOLT SPARK TEST PROVIDED AT FACTORY  
4. ALL VENT PIPING BY INSTALLER



END VIEW



PLAN



ELEVATION

PROVIDED EQUIPMENT

1. 150# R.F.S.O. FLANGE W/ 2" NPT FOR VENT
2. 4"Ø FTG. FOR PUMP CONDUIT
3. VELOCITY HEAD DIFFUSION BAFFLE
4. WEAR PLATE
5. SEDIMENT CHAMBER
6. UNDERFLOW BAFFLE
7. SLUDGE BAFFLE
8. STRIKER PLATES
9. PARALLEL CORRUGATED PLATE COALESCER
10. OIL/WATER SEPARATOR CHAMBER
11. RECTANGULAR MANWAY W/ BOLT-ON EXTENSION SHIPPED LOOSE
12. OUTLET DOWNCOMER
13. 24"Ø MANWAY WITH BOLT-ON EXTENSION SHIPPED LOOSE
14. 4"Ø FTG.FOR OIL PUMP-OUT WITH INTERNAL PIPE INSTALLED & RISER PIPE SHIPPED LOOSE
15. 2"Ø FTG. FOR LEVEL SENSOR WITH RISER PIPE SHIPPED LOOSE
16. LIFTING LUG
17. 2"Ø FTG. FOR VENT
18. 4"Ø FTG. FOR GAUGE WITH PLUG
19. 2"Ø FTG. FOR EFFLUENT WATER CHAMBER LEVEL SENSOR
20. 1/4" BULKHEAD
21. EFFLUENT WATER CHAMBER
22. INTERNAL RIBBON ANODE
23. PUMP MOUNT

REVISIONS



**Highland Tank**

U.S. Patent #4,722,800 Canadian Patent # 1,296,263  
#6,606,224 # 2,389,065

15000 GALLON OIL WATER SEPARATOR  
HT,HIGHGUARD,SINGLE WALL,"J" SERIES

CUSTOMER:

PROJECT:

QUOTE NO:

CHK'D BY:

SCALE: 1/8"=1'-0" DATE: 8-9-05 DWG. BY: DWG. NO.: 15000HGSWHTJ