

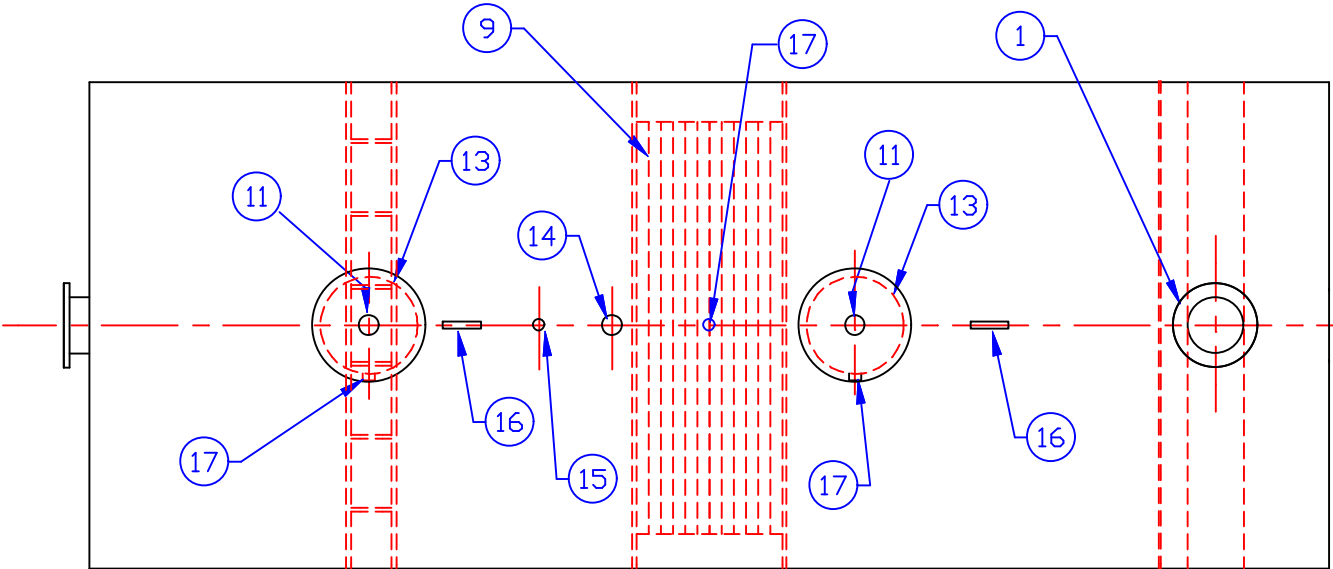
GENERAL SPECIFICATIONS

NO. REQ'D: (1)
CAPACITY: 15,000 GALLONS
TYPE: HTC, SINGLE WALL, ABOVEGROUND
MATERIAL: MILD CARBON STEEL
FLOW RATE: 1500 GPM
ESTIMATED WEIGHT: 17,480 lbs.
GAUGE:
SHELL- 5/16"
HEADS- 5/16"
SURFACE PREP:
NONE

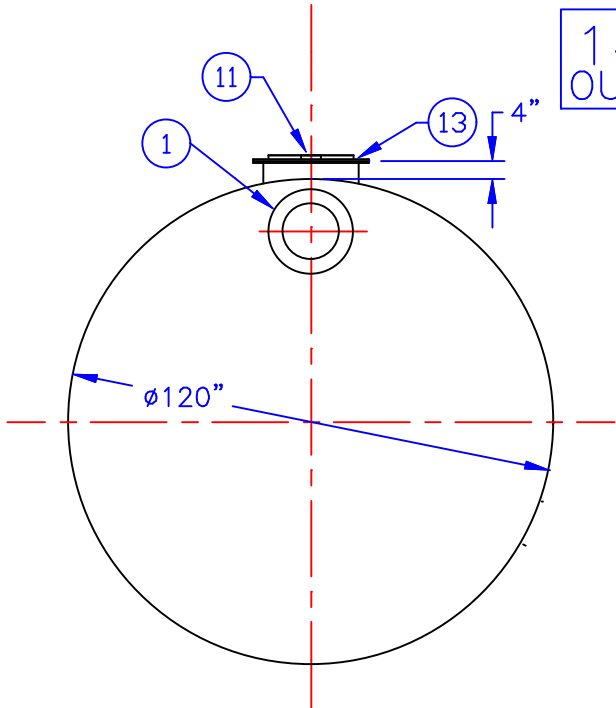
COATING: MATERIAL THICKNESS
EXTERIOR- RED PRIMER PAINT
INTERIOR- NONE
CONSTRUCTION:
LAP FIT & WELD ALL EXTERIOR SEAMS

PROVIDED EQUIPMENT

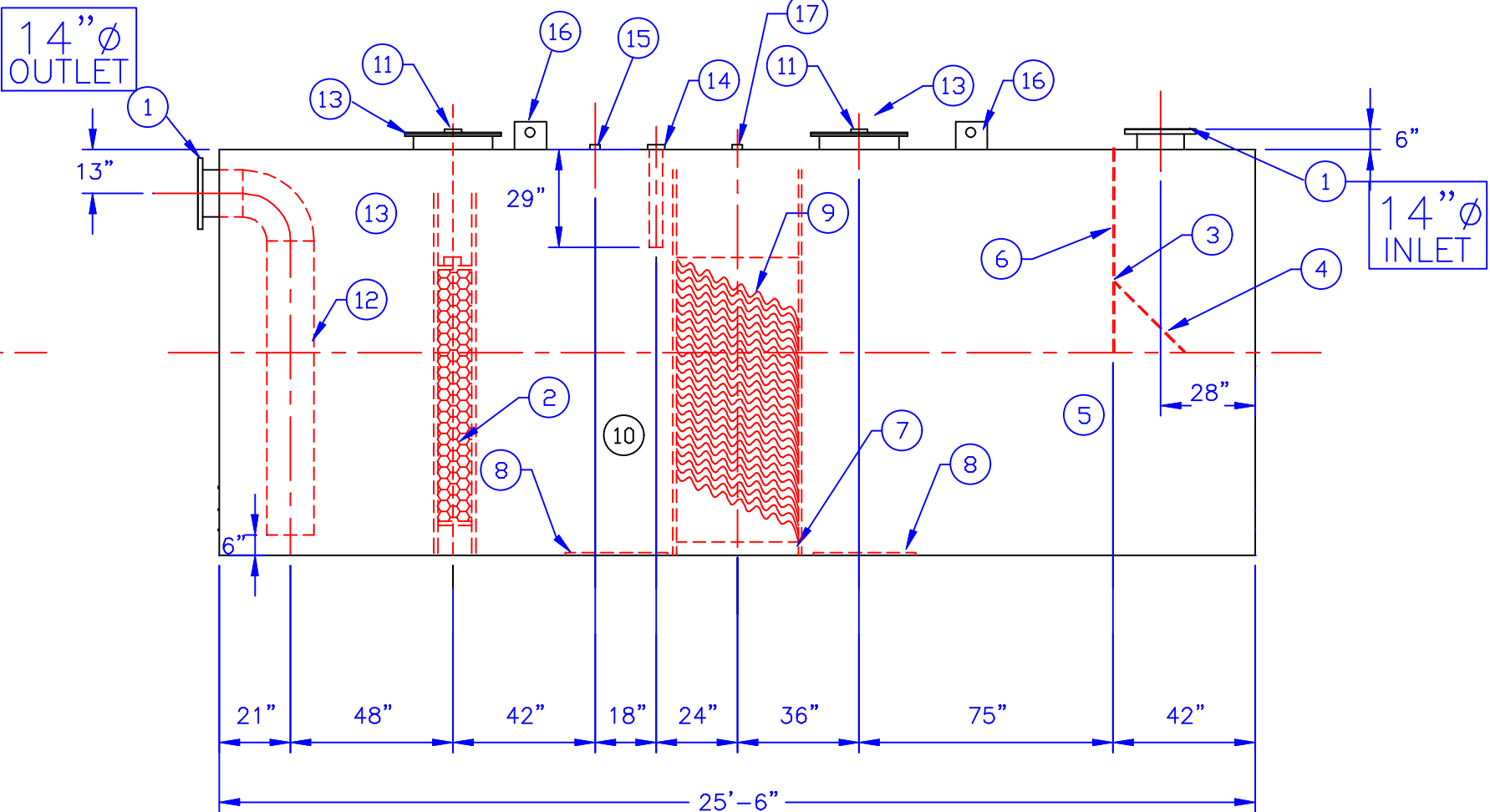
- 1. 150# R.F.S.O. FLANGE
- 2. 6" THICK COALESCER MATERIAL W/ PULL ROD SHIPPED LOOSE
- 3. VELOCITY HEAD DIFFUSION BAFFLE
- 4. WEAR PLATE
- 5. SEDIMENT CHAMBER
- 6. UNDERFLOW BAFFLE
- 7. SLUDGE BAFFLE
- 8. STRIKER PLATES
- 9. PARALLEL CORRUGATED PLATE COALESCER
- 10. OIL/WATER SEPARATOR CHAMBER
- 11. 4"ØNPT FTG. FOR GAUGE WITH PLUG - TYP. BOTH MANWAYS
- 12. OUTLET DOWNCOMER
- 13. 24"Ø MANWAY WITH BOLT-ON EXTENSION SHIPPED LOOSE
- 14. 4"ØNPT FTG.FOR OIL PUMP-OUT WITH INTERNAL & RISER PIPE SHIPPED LOOSE
- 15. 2"ØNPT FOR LEVEL SENSOR W/ RISER PIPE SHIPPED LOOSE
- 16. LIFTING LUG LOCATED BY HIGHLAND TANK FAB SHOP
- 17. 2"Ø NPT (FTG. FOR VENT) TYP. BOTH MANWAYS



PLAN



END VIEW



ELEVATION

NOTE :
ALL RIGHTS RESERVED. THIS DRAWING OR ANY PART THEREOF MUST NOT BE REPRODUCED IN ANY FORM WITHOUT THE WRITTEN PERMISSION OF HIGHLAND TANK.
HIGHLAND TANK SHALL BE RESPONSIBLE ONLY FOR ITEMS INDICATED ON THIS FABRICATION DRAWING UNLESS OTHERWISE NOTED. CUSTOMER IS RESPONSIBLE FOR VERIFYING CORRECTNESS OF SIZE / LOCATION OF FITTINGS , ACCESSORIES & COATINGS SHOWN ON THIS DRAWING

REVISIONS				
		Highland Tank		
15000 GALLON OIL WATER SEPARATOR HTC, SINGLE WALL, ABOVEGROUND				
CUSTOMER:				
PROJECT:				
QUOTE NO:			CHK'D BY:	
SCALE: 1/4"=1'-0"	DATE:	DWG. BY:	DWG. NO.: 15KHTCSW	