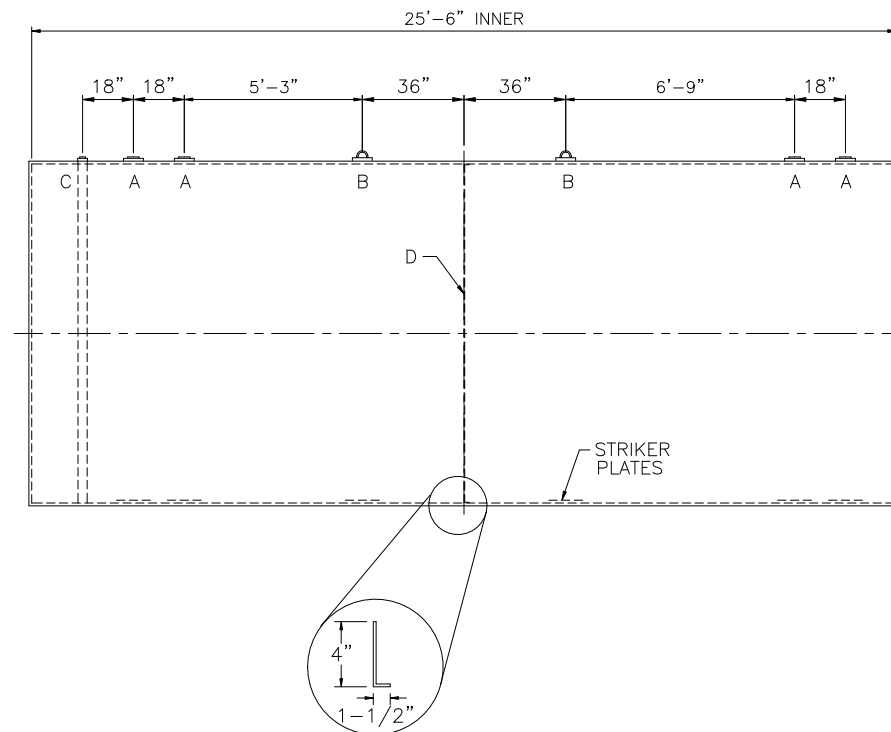
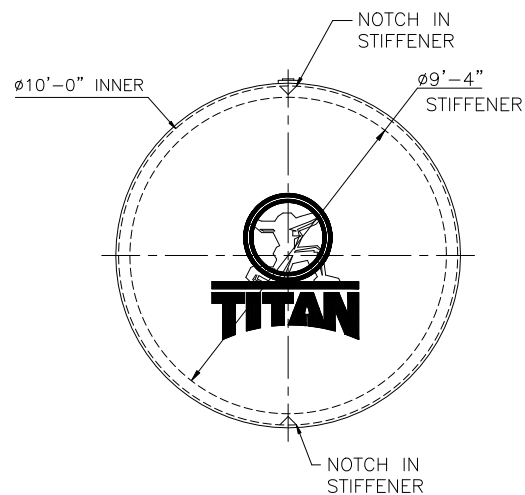



NOTE: ALL RIGHTS RESERVED. THIS
DRAWING MUST NOT BE REPRODUCED IN
ANY FORM WITHOUT THE WRITTEN
PERMISSION OF HIGHLAND TANK®.
HIGHLAND TANK® SHALL BE RESPONSIBLE
ONLY FOR ITEMS INDICATED ON THIS
FABRICATION DRAWING UNLESS OTHERWISE
NOTED. CUSTOMER IS RESPONSIBLE FOR
VERIFYING CORRECTNESS OF SIZE AND
LOCATION OF FITTINGS, ACCESSORIES, AND
COATINGS SHOWN ON THIS DRAWING.



STRIKER PLATES ROLLED & SEAL WELDED TO THE
TANK, 1/4" X 12" X 12" MIN.

<u>DESIGN DATA</u>
CAPACITY – 15,000 GALLONS
TYPE – DOUBLE WALL – 360° TYPE II
NO. REQ. – –
OPERATING PRESSURE – ATMOSPHERIC
TANK MATERIAL – MILD CARBON STEEL
THICKNESS – HEADS– 1/4"
THICKNESS – SHELL – 1/4"
*GA THK. BASED ON 60" MAX. BURIAL DEPTH
CONSTRUCTION – LAP WELD OUTSIDE ONLY –
TANK TEST – INNER: 5 PSIG OUTER: FULL VACUUM
INT. FINISH – NONE –
EXT. FINISH – GREEN TITAN® WRAP –
LABEL – UL-58/UL-1746 PART III

<u>LEGEND</u>	
A	4" CLOSE OFF FITTING
B	4" CLOSE OFF FITTING WITH REMOVABLE LIFT LUG
C	2" CLOSE OFF FITTING WITH INTERNAL INTERSTICE MONITOR PIPE
D	1/4" x 1-1/2" x 4" STIFFENER
E	—
F	—

		<h1>Highland Tank</h1>	
UNLESS NOTED, TOLERANCES ARE +/- .1"			
15,000		10' Ø TITAN®	
PATING: 5,915,586		PATING: 6,022,435	
PATING: 6,119,887		PATING: 6,062,977	
CUSTOMER:			
PROJECT:			
QUOTE NO:		CHK'D BY:	
SCALE:	DATE:	DWG. BY:	DWG. NO:
1/4"=1'-0"			15000TITAN120