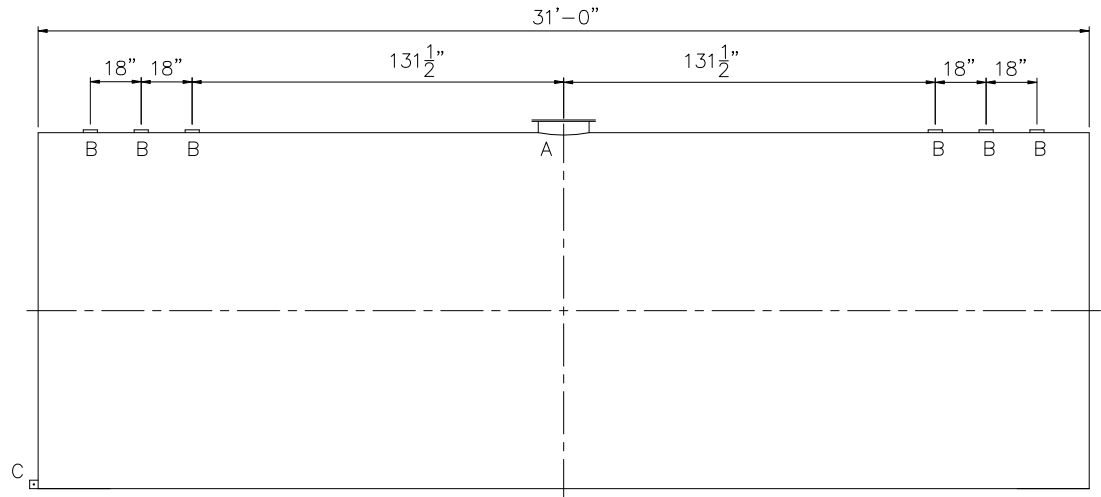



SHIPPING LUGS AS NEEDED

Diagram showing the elevation view of a circular structure. The structure is represented by a circle with a horizontal centerline and a vertical centerline. A dimension line indicates the diameter is $\phi 10'-6''$. A small rectangular feature is shown at the top center of the circle.



<u>DESIGN DATA</u>
CAPACITY –20,000 GALLON
TYPE – SINGLE WALL
NO. REQ. – –
OPERATING PRESSURE –ATMOSPHERIC
SPECIFIC GRAVITY = 1.0
TANK MATERIAL – MILD CARBON STEEL
THICKNESS – HEADS: 5/16”
THICKNESS – SHELL: 1/4”
CONSTRUCTION –LAP WELD OUTSIDE ONLY –
TANK TEST –5 PSIG –
INT. FINISH – NONE –
EXT. FINISH –SHOP PRIMER –
LABEL – UL 142

<u>LEGEND</u>	
A	18" LOOSE BOLT MANWAY [PRIMARY EMERGENCY VENT]
B	4" FITTING
C	FB-3"x 1/4"x3" WITH 5/8"Ø HOLE ON CL (GROUNDING LUG)
D	—
E	—
F	—

 <h1>Highland Tank</h1>	
UNLESS NOTED, TOLERANCES ARE +/- 1"	
20,000 GAL 126"Ø SW AG HORIZONTAL	
CUSTOMER:	
PROJECT:	
QUOTE NO:	
SCALE: 1/4"=1'-0"	DATE:
DWG. BY:	DWG. NO:
20000AHSW126	