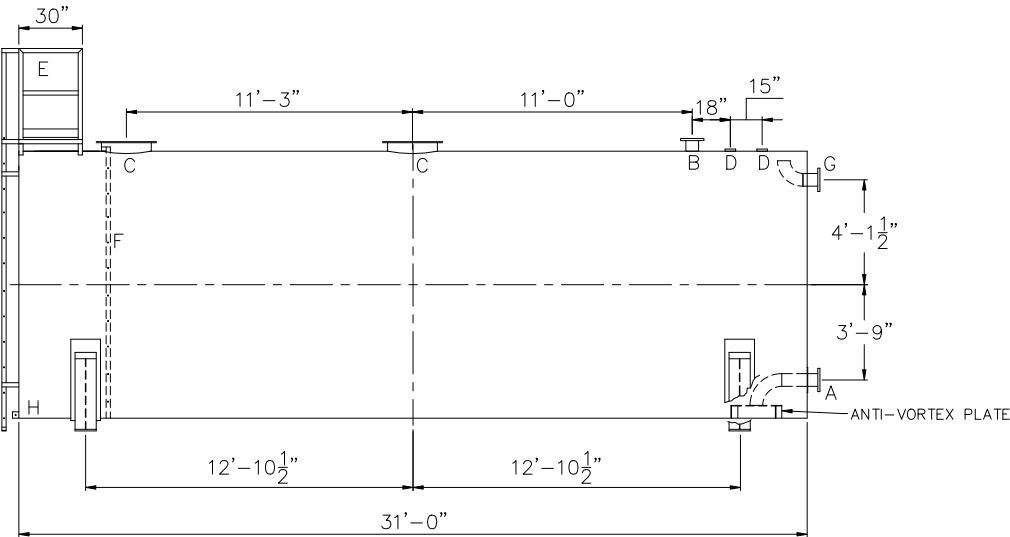
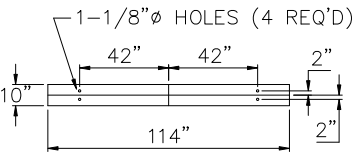


SHIPPING LUGS AS NEEDED

(2) 10'-6" ϕ x 6" HIGH UL STYLE SADDLES, SHIP LOOSE WITH TANK.



DESIGN DATA	LEGEND	
CAPACITY –20,000 GALLONS	A	FLANGE WITH INTERNAL ANTI–VORTEX PLATE PER NFPA 22
TYPE – FIRE PROTECTION TANK (FPT)	B	FLANGE – VENT
NO. REQ. –	C	24" X 14" PLATE TIGHT BOLT MANWAY WITH 1" THICK NEO–CORK GASKET
OPERATING PRESSURE –ATMOSPHERIC	D	4" FNPT CONNECTION
TANK MATERIAL – MILD CARBON STEEL	E	STD HTM EXTERNAL LADDER & PLATFORM ASSEMBLY – PAINTED SAFETY YELLOW AND SHIPPED LOOSE FOR INSTALLATION ON SITE BY OTHERS
THICKNESS: HEADS – 5/16"	F	HTM STD INTERNAL LADDER
THICKNESS: SHELL – 1/4"	G	FLANGE WITH INTERNAL 90° ELBOW SHOWN – OVERFLOW
CONSTRUCTION –LAP WELD INSIDE & OUTSIDE	H	FB–3"x 1/4"x3" WITH 5/8"Ø HOLE ON CL (GROUNDING LUG)
TANK TEST –5 PSIG		
INT. FINISH – SSPC SP10 BLAST, HighDRO®–LINER PLUS FOR NFPA 22 APPLICATIONS		
EXT. FINISH –SSPC SP6 BLAST, WHITE URETHANE PAINT		
LABEL – NONE		

		<h1>Highland Tank</h1>	
UNLESS NOTED, TOLERANCES ARE +/- .1"			
<h2>HighDRO® WATER STORAGE TANK</h2>			
20,000 GAL 126"Ø SINGLE-WALL ABOVEGROUND HORIZONTAL FOR FIRE PROTECTION WITH BOTTOM DRAIN			
CUSTOMER:			
PROJECT:			
QUOTE NO:		CK'D BY:	
SCALE: 3/16"=1'-0"	DATE: XX/XX/XX	DWG. BY: XXXX	DWG. NO.: 20000AHSHWDFTBD126