

CUSTOMER APPROVAL

THE CUSTOMER HAS REVIEWED THIS DRAWING AND VERIFIED THE ACCURACY OF ALL INFORMATION AND DIMENSIONS.

SIGNED: _____

DATE: _____

GENERAL SPECIFICATIONS

QUANTITY: ONE (1)
MODEL: RCT-20000-126 AC
CAPACITY: 20,000 GALLONS
TYPE: SINGLE WALL, ABOVE-GROUND
MATERIAL: 1/4" CARBON STEEL SHELL, 5/16" HEADS
LAP FIT AND WELD INTERIOR AND EXTERIOR SEAMS
TANK TEST: 3-5 PSI AIR TEST
SURFACE PREP: SSPC-SP 10 BLAST INTERIOR SURFACES
SSPC-SP 6 BLAST EXTERIOR SURFACES
COATING, EXTERIOR: WHITE URETHANE - 3-5 MILS
COATING, INTERIOR:
HighDRO®- LINER PLUS POLYURETHANE - 15 MILS
OPERATING PRESSURE: ATMOSPHERIC

PROVIDED EQUIPMENT

1. 12"Ø SCH 40 PIPE STUB - INLET
2. 12"Ø SCH 40 PIPE STUB - OVERFLOW
3. 12"Ø 45° DIFFUSION ELBOW
4. UNDERFLOW BAFFLE - 1/4"
5. DIFFUSION BAFFLE - 1/4"
6. 28" x 28" x 1/4" WEAR PLATE
7. STAINLESS STEEL LADDER
8. STRIKER PLATE
9. 2" FNPT WITH STEEL PLUG - DRAIN
10. 24"Ø MANWAY WITH FLANGED EASY-ACCESS HATCH
11. 3"Ø-150# RFSO FLANGE - SUCTION
12. 4" FNPT - NORMAL TANK VENT
13. 8"Ø-150# FFSSO FLANGE - EMERGENCY VENT
14. 6" HIGH UL SADDLE - SHIPPED LOOSE

THIS DRAWING IS SUBJECT TO CHANGE AT THE DISCRETION OF THE MANUFACTURER. CONTACT HIGHLAND TANK FOR THE MOST UP-TO-DATE INFORMATION AND DRAWINGS OF OUR PRODUCTS.



Highland Tank®

HighDRO®-PURE RAINWATER HARVESTING SYSTEM
20,000 GALLON CISTERN TANK

CUSTOMER:

PROJECT:

QUOTE NO:

ORDER#:

SCALE:

DATE:

DWG. BY:

DWG. NO.:

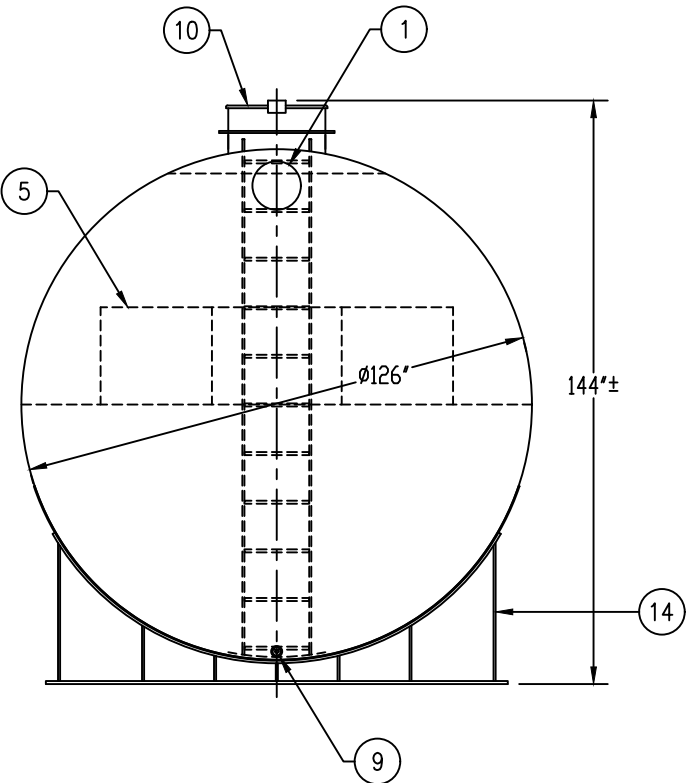
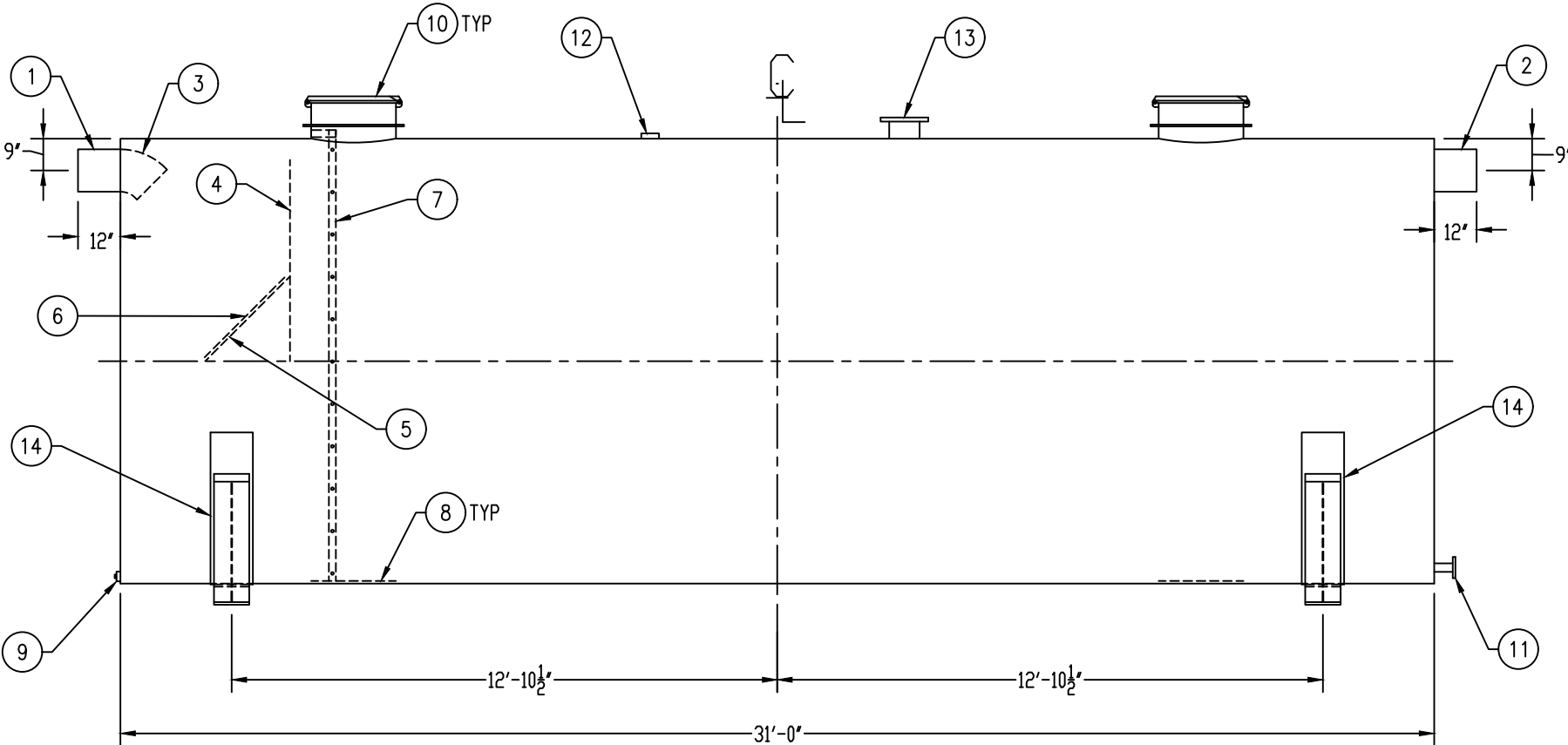
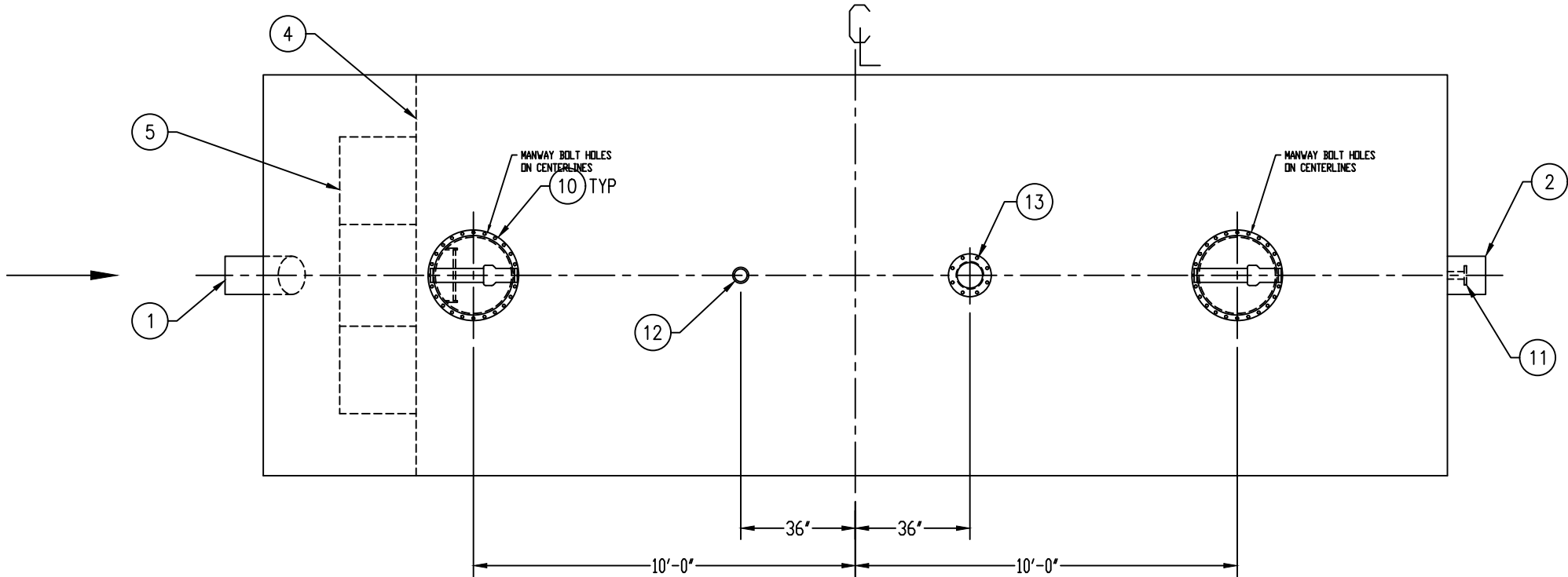
DIMENSION TOLERANCE: ± 1"

NTS

4/19/21

MGS

RCT-20000-126 AC



NOTE:
ALL RIGHTS RESERVED. THIS DRAWING, OR ANY PART THEREOF, MUST NOT BE REPRODUCED IN ANY FORM WITHOUT WRITTEN PERMISSION FROM HIGHLAND TANK. UNLESS OTHERWISE NOTED, HIGHLAND TANK SHALL BE RESPONSIBLE ONLY FOR ITEMS INDICATED ON THIS FABRICATION DRAWING. THE CUSTOMER IS RESPONSIBLE FOR VERIFYING THE CORRECTNESS OF THE TYPE, SIZE, AND LOCATION OF ALL FITTINGS, ACCESSORIES, AND COATINGS SHOWN ON THIS DRAWING.