

ITEM	DESCRIPTION
①	4" NORMAL VENT FITTING
②	8"-8 OZ. EMERGENCY VENT - SHIPPED LOOSE
③	VENT DEFLECTOR ASSEMBLY - SHIPPED LOOSE
④	4" FITTING
⑤	3" FITTING
⑥	3" FCPLG
⑦	1" OVERFLOW PIPE - SHIPPED LOOSE
⑧	1" PIPE UNION
⑨	4" FILL FITTING
⑩	FILL CONTAINMENT CHAMBER
⑪	DRIP PAN PLATFORM WITH 2" LIP
⑫	1/2" DRAIN FITTING
⑬	STAIRS, PLATFORM AND HANDRAIL-SHIPPED LOOSE
⑭	3/4" PUMPOUT PIPE
⑮	3" PIPE CAP SUMP
⑯	8" WF (3)

#### AUTHORIZATION

COMPANY NAME \_\_\_\_\_

APPROVED BY (PLEASE PRINT) \_\_\_\_\_

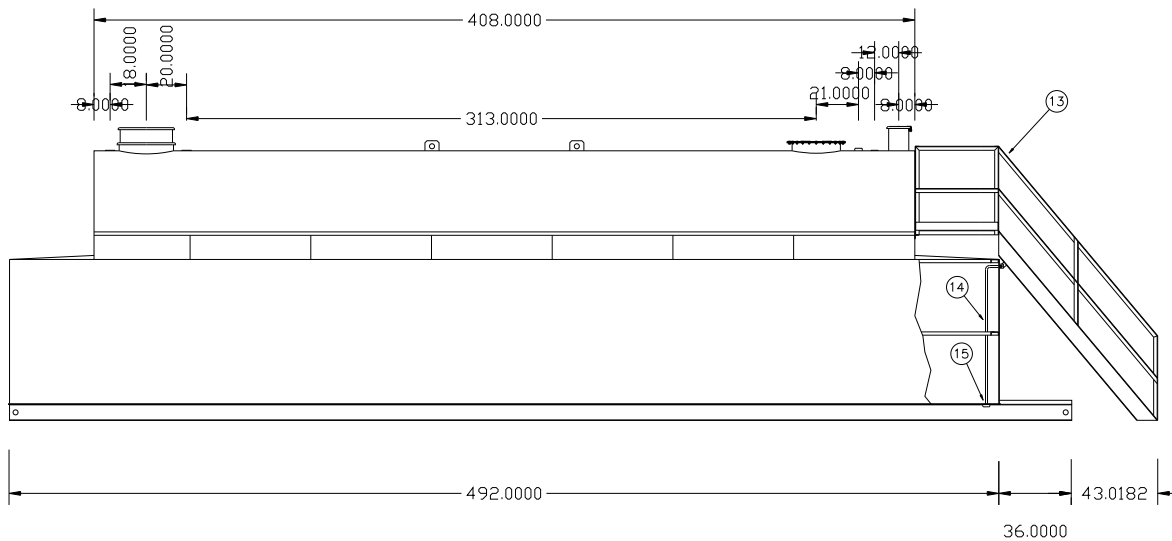
APPROVAL SIGNATURE \_\_\_\_\_

DATE \_\_\_\_\_

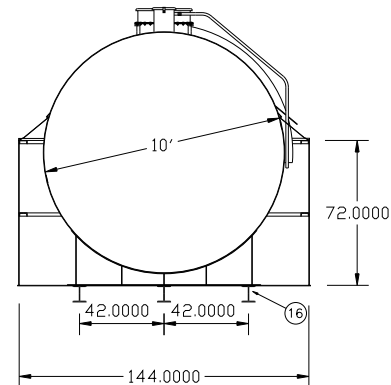
CONTRACT NO. \_\_\_\_\_

#### NOTES

1. PRIMARY TANK:  
SHELL - 1/4" HEAD - 5/16"  
CONTAINMENT: 1/4"
2. MATERIAL - MILD CARBON STEEL
3. TEST AT 5-7 PSIG.
4. ENTIRE UNIT UL LISTED.
5. EXTERIOR FINISH -
6. INTERIOR LINING -
7. ALL DIMENSIONS APPROXIMATE.



SECTION A-A



All rights reserved. This drawing or any part thereof must not be reproduced in any form without the written permission of Areo-Power Utilized Fuels, Inc.

**AREO-POWER®**

TITLE	REV #	REV DATE
20,000 GAL. AREO FUELER		
U.S. PATENT # 4895272	CANADIAN PATENT APPLIED FOR	
SCALE	DATE	DRAWN BY
3/16"=1'	8/1/92	JF
		DWG. NO.
		APB710