

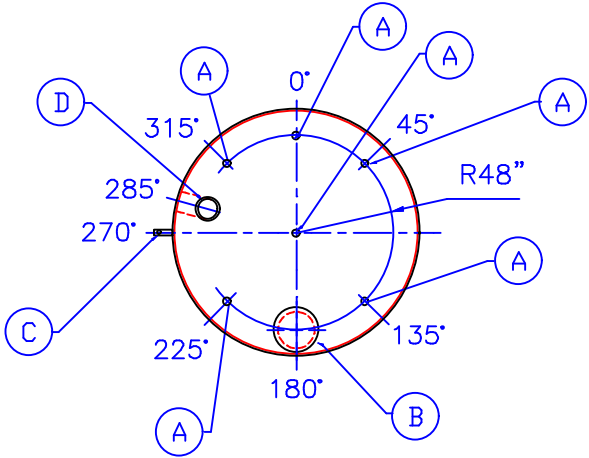
NOTE:  
HIGHLAND TANK & MFG. CO. SHALL BE RESPONSIBLE ONLY FOR ITEMS INDICATED ON THIS FABRICATION DRAWING. CONTRACTOR OR OTHERS SHALL BE RESPONSIBLE FOR ANY ITEMS NOT INDICATED ON DRAWING INCLUDING, BUT NOT LIMITED TO, INTERNAL / EXTERNAL PIPING—COATINGS—FITTINGS—ACCESSORIES, ETC. APPROVER OF DRAWING SHALL BE RESPONSIBLE FOR VERIFYING CORRECTNESS OF SIZE / LOCATION OF FITTINGS, ACCESSORIES, COATINGS, ETC. HIGHLAND TANK & MFG. CO. SHALL FABRICATE TANK IN ACCORDANCE TO THIS DRAWING (WHICH MAY OR MAY NOT BE IN EXACT ACCORDANCE TO PLANS & SPECIFICATIONS

NOTE:  
SEE PLAN VIEW FOR TRUE ORIENTATION & LOCATION OF OPENINGS AND ACCESSORIES

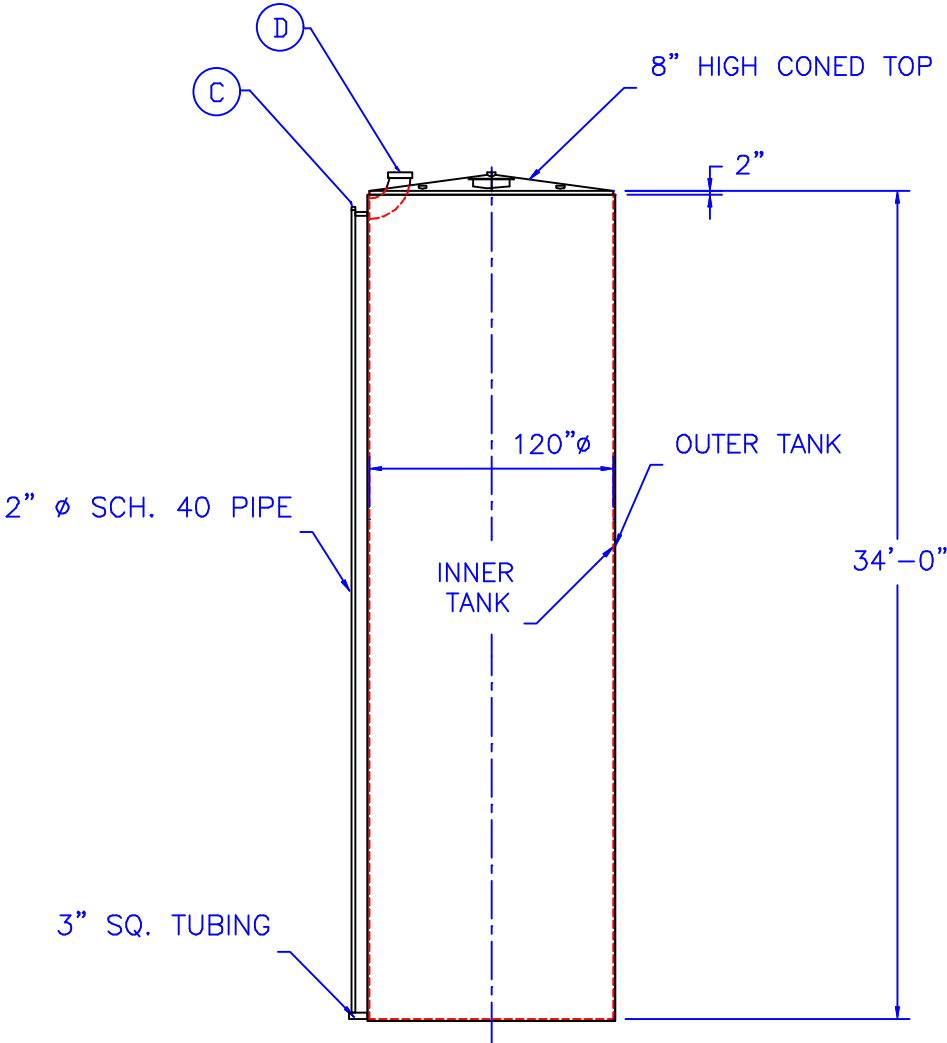
NOTE:  
LIFTING LUGS FOR UNLOADING UNIT & STANDING UNIT UPRIGHT TO BE PLACED AS NEEDED BY FABRICATION SHOP

FITTING SCHEDULE

- A= 4" ∅ NPT
- B= 18" ∅ LOOSE BOLT MANHOLE FOR PRIMARY EMERGENCY VENT
- C= 2" ∅ NPT (FITTING FOR LEAK DETECTION)
- D= 10" ∅ CPLG. & ELBOW FOR SECONDARY EMERGENCY VENT (HIGHLAND TANK STANDARD DESIGN)



PLAN



ELEVATION

GENERAL NOTES

CAPACITY : 20000 GALLONS  
TYPE : I 360 DOUBLE WALL, ABOVEGROUND VERTICAL  
NO. REQ. :  
MATERIAL : MILD CARBON STEEL  
TEST : 1.5 TO 2.5 P.S.I.  
MIN. GAUGE OR THICKNESS (PER U.L. 142):  
INNER BOTTOM HEAD : 1/4"  
INNER SHELL : 1/4"  
OUTER BOTTOM HEAD : 1/4"  
OUTER SHELL : 7 GA.  
TOP CONE: 7 GA.

PAINT :  
INTERIOR : NONE  
EXTERIOR : RED PRIMER

CONSTRUCTION : FLAT BOTTOM HEADS, CONED TOP HEAD  
LAP WELD OUTSIDE SEAMS EXCEPT BUTT  
FIT & WELD THE LONGITUDINAL SEAMS

APPROVED LABELS : U.L. 142

REVISIONS				
<div><div><div><div><div><span></span></div><div>HIGHLAND TANK &amp; MFG. CO.</div></div></div><div><div><div><span></span></div><div>Highland Tank</div></div></div></div></div>				
20000 GALLON ABOVEGROUND VERTICAL DOUBLE WALL TYPE I 360				
CUSTOMER:				
PROJECT:				
QUOTE NO:				CHK'D BY:
SCALE: 1/8"=1'-0"	DATE: 9-28-99	DWG. BY:	DWG. NO.: 20KAVDWI	