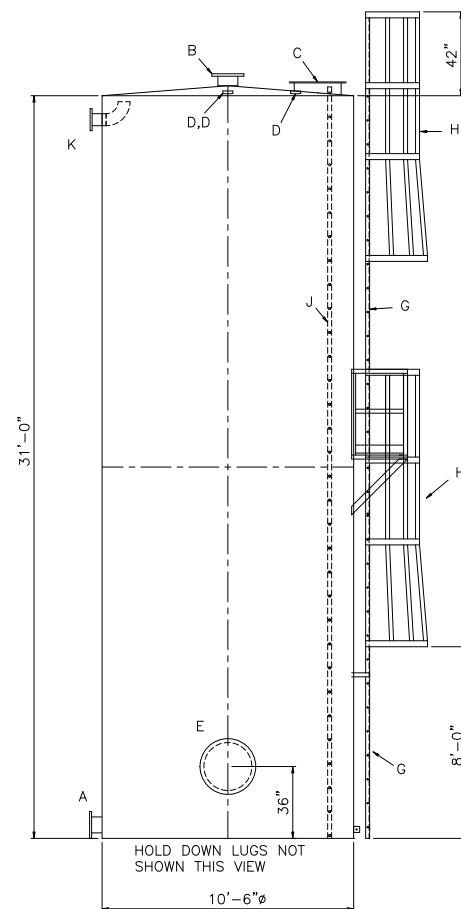
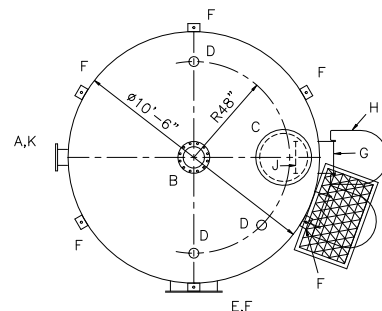


TOUCH UP OF FINISHED PAINT IS  
REQUIRED BY INSTALLATION  
CONTRACTOR. TOUCH UP PAINT SHIPPED  
WITH TANK.

1. SEE PLAN VIEW FOR TRUE ORIENTATION AND LOCATION OF FITTING
2. LIFTING LUGS FOR UNLOADING UNIT & STANDING UNIT UPRIGHT TO BE PLACED AS NEEDED BY FABRICATION SHOP
3. A 3x3/4" STEEL GROUNDING LUG WITH A 5/8" HOLE IN CENTER TO BE PLACED ON SHELL AT BOTTOM OF TANK IN LINE WITH LIFTING LUGS



CAPACITY – 20,000 GALLONS
TYPE – SINGLE WALL ABOVEGROUND VERTICAL
NO. REQ. – –
OPERATING PRESSURE – ATMOSPHERIC
SPECIFIC GRAVITY = 1.0
TANK MATERIAL – MILD CARBON STEEL
THICKNESS – TOP: 7 GAUGE SHALLOW CONED
THICKNESS – BOTTOM: 1/4" FLAT PER DETAIL
THICKNESS – SHELL: 1/4"
CONSTRUCTION – LAP WELD INSIDE & OUTSIDE
TANK TEST – 2 PSIG
INT. FINISH – SSPC SP10 BLAST, HighDRO®-LINER PLUS FOR NSF 61 APPLICATIONS
EXT. FINISH – SSPC SP6 BLAST, URETHANE PAINT OR OTHER TO BE SPECIFIED.

A	FLANGE – SUPPLY
B	FLANGE – VENT
C	24" X 1/4" PLATE TIGHT BOLT MANWAY WITH 1/8" THICK NEO-CORK GASKET
D	4" FNPT CONNECTION
E	24" CLOSE BOLT MANWAY WITH 1/8" THICK NEO-CORK GASKET
F	HOLD DOWN LUG – QTY VARIES PER TANK
G	STD HTM EXTERNAL LADDER – PAINTED SAFETY YELLOW AND SHIPPED LOOSE FOR INSTALLATION ON SITE BY OTHERS
H	STD HTM SAFETY CAGE – PAINTED SAFETY YELLOW AND SHIPPED LOOSE FOR INSTALLATION ON SITE BY OTHERS
J	STD HTM INTERNAL LADDER
K	FLANGE WITH INTERNALS SHOWN – OVERFLOW

