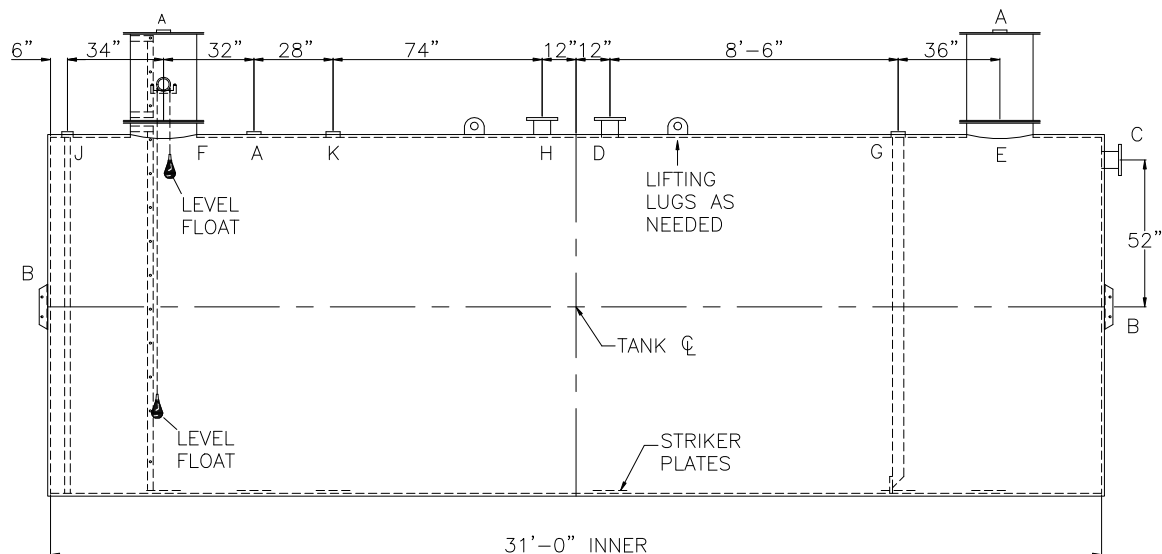
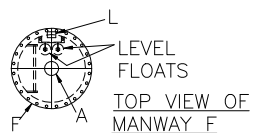


NOTES:

- 1) THE HIGHGUARD TANK IS NOT APPROVED FOR THE STORAGE OF HEATED PRODUCTS.
- 2) 15,000 VOLT SPARK TEST PROVIDED AT FACTORY.
- 3) SHOP TO INSTALL 1/4"x12"x12" STRIKER PLATES, ROLLED AND SEAL WELD TO THE TANK.



<u>DESIGN DATA</u>
CAPACITY – 20,000 GALLONS
TYPE – DOUBLE WALL, WASTEWATER STORAGE TANK
NO. REQ. – –
OPERATING PRESSURE – ATMOSPHERIC
TANK MATERIAL – MILD CARBON STEEL
THICKNESS INNER –HEADS: 1/4 GA, SHELL: 5/16”
THICKNESS OUTER –HEADS: 1/4”, SHELL: 10 GA
*GA THK. BASED ON 60” MAX. BURIAL DEPTH
CONSTRUCTION –
INNER TANK – FLAT FLANGED, HEADS LAP WELD INTERIOR AND EXTERIOR
OUTER TANK – LAP WELD OUTSIDE ONLY
TANK TEST – INNER – 5 PSIG
OUTER – 2 PSIG AND FULL VACUUM
INT. FINISH – SP10 BLAST, HighDRO®-LINER PLUS
EXT. FINISH – SP6 BLAST, 75 MILS POLYURETHANE
LABEL – HIGHGUARD

LEGEND			
A	4" FITTING	G	4" FITTING WITH 4" SCH 40 DROP PIPE
B	HTM SPIN BRK'T – MFG USE ONLY – NOT TO BE USED FOR FIELD INSTALLATION	H	FLANGE – SECONDARY VENT
C	FLANGE – LOCATE ON VERTICAL $\phi$ – INLET	J	2" INTERNAL MONITOR PIPE
D	FLANGE – PRIMARY VENT	K	4" FNPT FITTING–SPARE
E	24" x $\frac{1}{4}$ " PLATE TIGHT BOLT MANWAY WITH $\frac{1}{8}$ " THICK NEO–CORK GASKET AND BOLT ON EXTENSION – EXTENSION SHIPS LOOSE FOR INSTALLATION ON SITE BY OTHERS		L
F	24" x $\frac{1}{4}$ " PLATE TIGHT BOLT MANWAY WITH $\frac{1}{8}$ " THICK NEO–CORK GASKET AND BOLT ON EXTENSION – EXTENSION SHIPS LOOSE FOR INSTALLATION ON SITE BY OTHERS, ACCESS LADDER INCLUDED.		

