

NO. REQ'D: (1)
CAPACITY: 20,000 GALLONS
TYPE: HT, HIGHGUARD, SINGLE WALL, "J" SERIES
MATERIAL: MILD CARBON STEEL
FLOW RATE: 2000 GPM

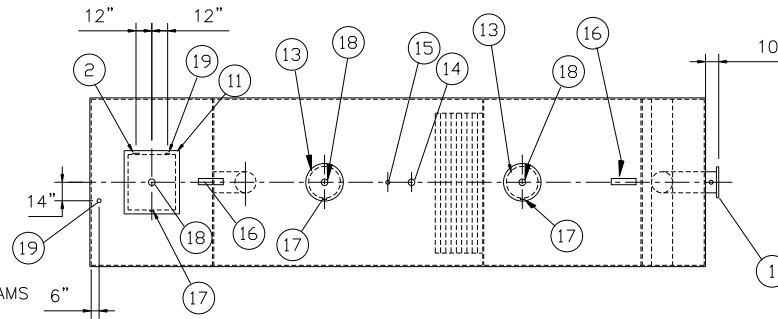
GAUGE:
SHELL- 5/16"
HEADS- 1/4"

SURFACE PREP:

- SSPC NO.6 BLAST ALL EXTERIOR SURFACES
- SSPC NO.10 BLAST ALL INTERIOR SURFACES OF WATER CHAMBER ONLY

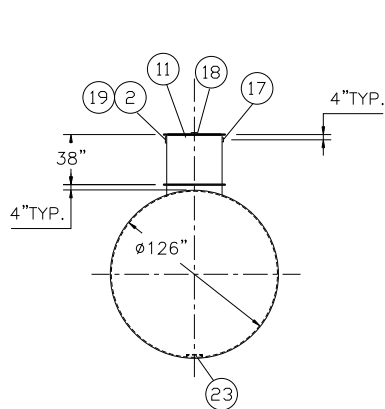
COATING:	MATERIAL	THICKNESS
EXTERIOR-	HIGHGUARD	(75 MILS)
INTERIOR-	POLYURETHANE	(15 MILS)
	INTERIOR OF WATER CHAMBER ONLY	

CONSTRUCTION : LAP FIT AND WELD ALL EXTERIOR SEAMS
OPERATING PRESSURE: ATMOSPHERIC

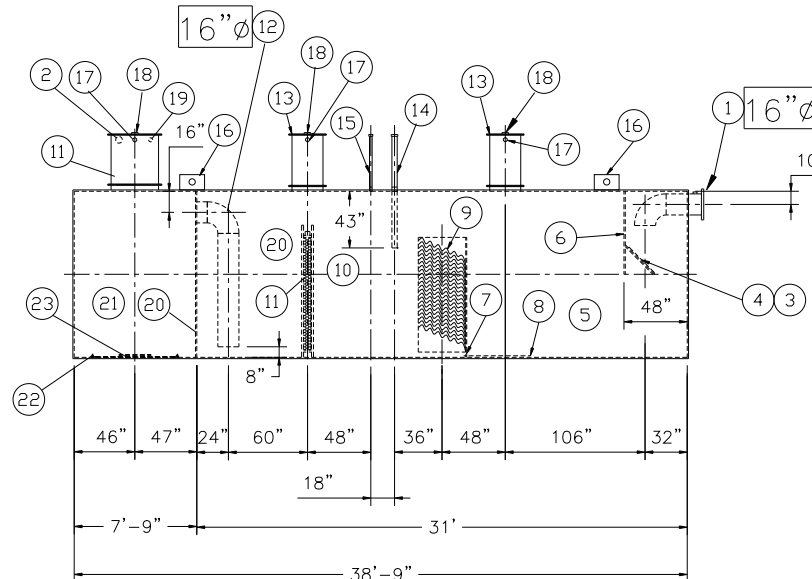


PLAN

- NOTES:
1. POLYURETHANE HIGHGUARD TANK IS NOT APPROVED FOR THE STORAGE OF HEATED PRODUCTS
 2. CUSTOMER TO PROVIDE PUMPING INFORMATION FOR PROPER PUMP SIZING & PUMPOUT DESIGN.
 3. 15000 VOLT SPARK TEST PROVIDED AT FACTORY
 4. ALL VENT PIPING BY INSTALLER



END VIEW



ELEVATION

PROVIDED EQUIPMENT

1. 150# R.F.S.O. FLANGE W/ 2" NPT FOR VENT
2. 4"Ø FTG. FOR PUMP CONDUIT
3. VELOCITY HEAD DIFFUSION BAFFLE
4. WEAR PLATE
5. SEDIMENT CHAMBER
6. UNDERFLOW BAFFLE
7. SLUDGE BAFFLE
8. STRIKER PLATES
9. PARALLEL CORRUGATED PLATE COALESCER
10. OIL/WATER SEPARATOR CHAMBER
11. RECTANGULAR MANWAY W/ BOLT-ON EXTENSION SHIPPED LOOSE
12. OUTLET DOWNCOMER
13. 24"Ø MANWAY WITH BOLT-ON EXTENSION SHIPPED LOOSE
14. 4"Ø FTG.FOR OIL PUMP-OUT WITH INTERNAL PIPE INSTALLED & RISER PIPE SHIPPED LOOSE
15. 2"Ø FTG. FOR LEVEL SENSOR WITH RISER PIPE SHIPPED LOOSE
16. LIFTING LUG
17. 2"Ø FTG. FOR VENT
18. 4"Ø FTG. FOR GAUGE WITH PLUG
19. 2"Ø FTG. FOR EFFLUENT WATER CHAMBER LEVEL SENSOR
20. 1/4" BULKHEAD
21. EFFLUENT WATER CHAMBER
22. INTERNAL RIBBON ANODE
23. PUMP MOUNT

REVISIONS



Highland Tank

U.S. Patent #4,722,800	Canadian Patent # 1,296,263
#6,606,224	# 2,389,065

20000 GALLON OIL WATER SEPARATOR
HT,HIGHGUARD,SINGLE WALL,"J" SERIES

CUSTOMER:

PROJECT:

QUOTE NO:

CHK'D BY:

SCALE:
1/8"=1'-0"

0"	DATE: 8-9-05
----	-----------------

DWG. BY:	
----------	--

DWG. NO.:

20000HGSWHTJ

NOTE :
ALL RIGHTS RESERVED. THIS DRAWING OR ANY PART THERE OF MUST
NOT BE REPRODUCED IN ANY FORM WITH OUT THE WRITTEN PERMISSION
OF HIGHLAND TANK.
HIGHLAND TANK SHALL BE RESPONSIBLE ONLY FOR ITEMS INDICATED
ON THIS FABRICATION DRAWING UNLESS OTHERWISE NOTED. CUSTOMER
IS RESPONSIBLE FOR VERIFYING CORRECTNESS OF SIZE / LOCATION
OF FITTINGS , ACCESSORIES & COATINGS SHOWN ON THIS DRAWING