

GENERAL SPECIFICATIONS

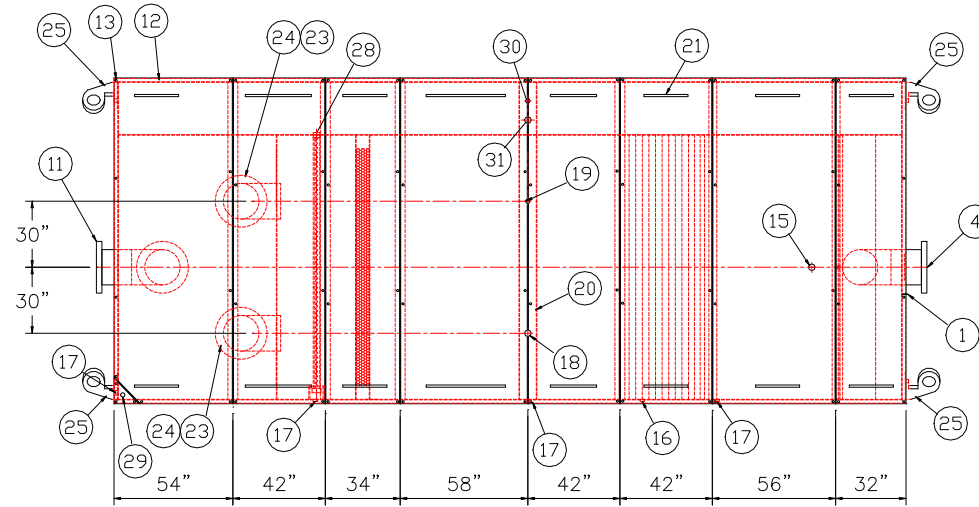
NO. REQ'D: (1)
CAPACITY: 20000 GALLONS
TYPE: RECTANGULAR, HTC, ABOVEGROUND, S--SERIES
MATERIAL: MILD CARBON STEEL
FLOW RATE: 2000 GPM
GAUGE: 1/4" THROUGHOUT
SURFACE PREP:
SSPC NO.10 BLAST ALL INTERIOR SURFACES
SSPC NO.6 BLAST ALL EXTERIOR SURFACES

COATING:	MATERIAL	THICKNESS
EXTERIOR--	CHEMPRIME 3001	(3-6 MILS)
	CHEMLINE 3300 TOP COAT "WHITE"	(2-3 MILS)
INTERIOR--	CHEMLINE 4200 PW	(15 MILS)

CONSTRUCTION:
BUTT FIT AND WELD ALL CORNERS IN & OUT

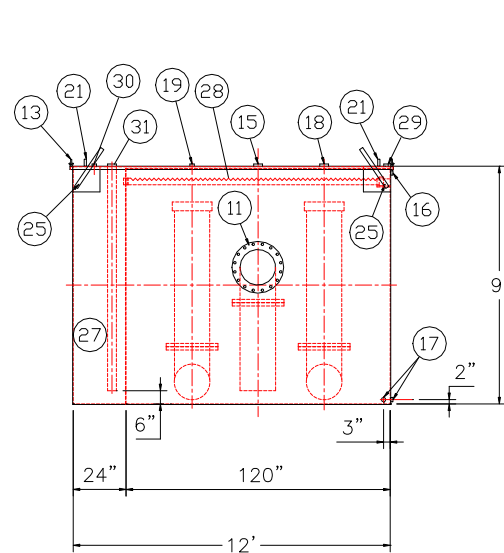
NOTES

1. ALL INTERNAL MATERIAL IS 10 GA
2. ALL THREADED DRAIN FITTINGS TO HAVE STEEL THREADED PLUGS AND COATED WITH TANK
3. ALL OTHER THREADED FITTINGS TO HAVE PVC THREADED PLUGS
4. LIFTING LUGS HAVE REINFORCING PLATES

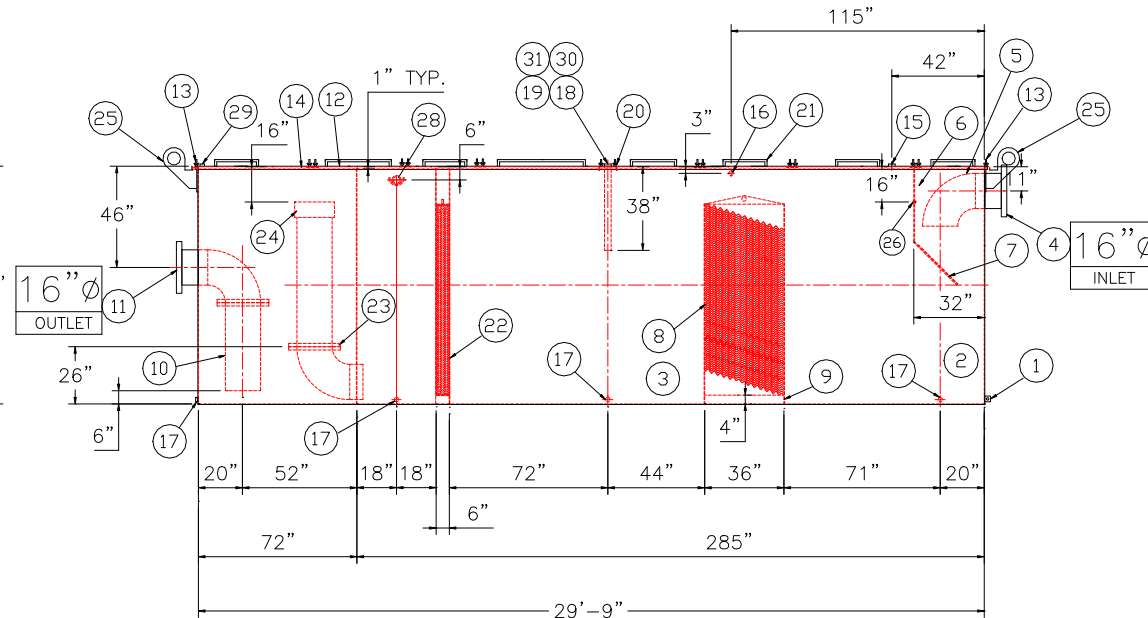


REMOVABLE COVERS (8) REQUIRED
PLAN VIEW

- ## REQUIRED EQUIPMENT
1. 3"x3"x1/4" FLAT W/ 9/16"ø HOLE DRILLED IN CENTER (GROUNDING LUG)
 2. SEDIMENT CHAMBER
 3. OIL WATER SEPARATOR CHAMBER
 4. 150# R.F.S.O. FLANGED INLET
 5. STEEL INLET ELBOW PIPING
 6. VELOCITY HEAD DIFFUSION BAFFLE 10GA
 7. WEAR PLATE (1/4" MATERIAL)
 8. REMOVABLE PARALLEL CORRUGATED PLATE COALESCER (CORELLA PVC PLATES) 1" PLATE SPACING
 9. SLUDGE BAFFLE - 10GA
 10. FLANGED PVC OUTLET DOWNCOMER PIPE
 11. 150# R.F.S.O. FLANGED OUTLET W/ INTERNAL STEEL ELBOW & FLANGE
 12. (8) PIECE COVER W/ 5/8" BOLT HOLES - 7 GA
 13. NUTS & BOLTS W/ LARGE WING (CORROSION RESISTANT)
 14. GASKET MATERIAL (FOR EACH REMOVABLE COVER)
 15. 3"ø FNPT (CLEAN-OUT)
 16. 2"ø FNPT (VENT)
 17. 2"ø FNPT (DRAIN)
 18. 3"ø FNPT FULL COUPLING WITH 3" INTERNAL PVC PIPE (OIL PUMP OUT IN SEPARATOR CHAMBER)
 19. 2"ø FNPT (SEPARATOR CHAMBER INTERFACE LEVEL SENSOR)
 20. 7GA. CROSSMEMBER FOR OIL PUMP-OUT & LEVEL SENSOR FITTINGS IN SEPARATOR AND OIL HOLDING CHAMBERS
 21. HANDLES PER H.T. STANDARD
 22. 6" THICK REMOVABLE PETROSCREEN CARTRIDGE COALESCER
 23. 16"ø STEEL ELBOW W/ FLANGE WELDED TO TOP FOR PVC RISER PIPES
 24. 16"ø ADJUSTABLE FERNCO COUPLING
 25. 3/4" THICK LIFTING LUG ANGLED TOWARD CENTER
 26. 1"ø FNPT COUPLING W/ PLUG
 27. OIL HOLDING COMPARTMENT
 28. 3" FNPT COUPLING WITH SAWTOOTH TYPE PVC OIL SKIMMER AND PIPE SUPPORT SHELF
 29. 2"ø FNPT HALF COUPLING (SPARE)
 30. 2"ø FNPT (HIGH LEVEL OIL HOLDING CHAMBER LEVEL SENSOR)
 31. 3"ø FNPT FULL COUPLING WITH 3" INTERNAL PVC PIPE (OIL PUMP OUT IN OIL HOLDING CHAMBER)



END VIEW



ELEVATION

REVISIONS



Highland Tank

U.S. Patent #4,722,800 Canadian Patent # 1,296,263

20000 GALLON OIL WATER SEPARATOR
RECTANGULAR, HTC, S--SERIES

CUSTOMER:

PROJECT:

QUOTE NO:

CHK'D BY:

SCALE: 1/4"=1'-0"

DATE: 1-14-09

DWG. BY:

DWG. NO.: 20000RECSWHTCS

NOTE :
ALL RIGHTS RESERVED. THIS DRAWING OR ANY PART THEREOF MUST NOT BE REPRODUCED IN ANY FORM WITHOUT THE WRITTEN PERMISSION OF HIGHLAND TANK.
HIGHLAND TANK SHALL BE RESPONSIBLE ONLY FOR ITEMS INDICATED ON THIS FABRICATION DRAWING UNLESS OTHERWISE NOTED. CUSTOMER IS RESPONSIBLE FOR VERIFYING CORRECTNESS OF SIZE / LOCATION OF FITTINGS , ACCESSORIES & COATINGS SHOWN ON THIS DRAWING

GENERAL SPECIFICATIONS

NO. REQ'D: (1)
CAPACITY: 20000 GALLONS
TYPE: RECTANGULAR, HTC, ABOVEGROUND, S-SERIES
MATERIAL: MILD CARBON STEEL
FLOW RATE: 2000 GPM
GAUGE: 1/4" THROUGHOUT
SURFACE PREP:
SSPC NO.10 BLAST ALL INTERIOR SURFACES
SSPC NO.6 BLAST ALL EXTERIOR SURFACES

COATING:	MATERIAL	THICKNESS
EXTERIOR-	CHEMPRIME 3001	(3-6 MILS)
	CHEMLINE 3300 TOP COAT "WHITE"	(2-3 MILS)
INTERIOR-	CHEMLINE 4200 PW	(15 MILS)

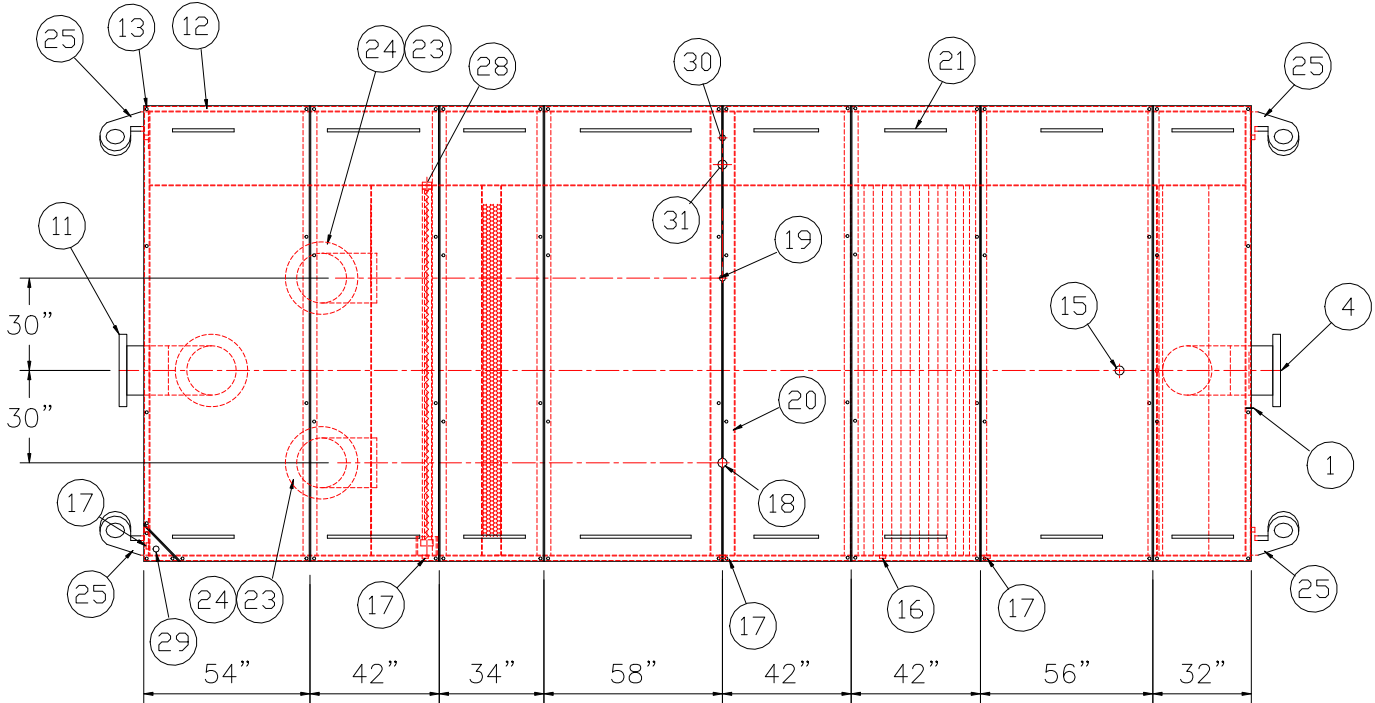
CONSTRUCTION:
BUTT FIT AND WELD ALL CORNERS IN & OUT

NOTES

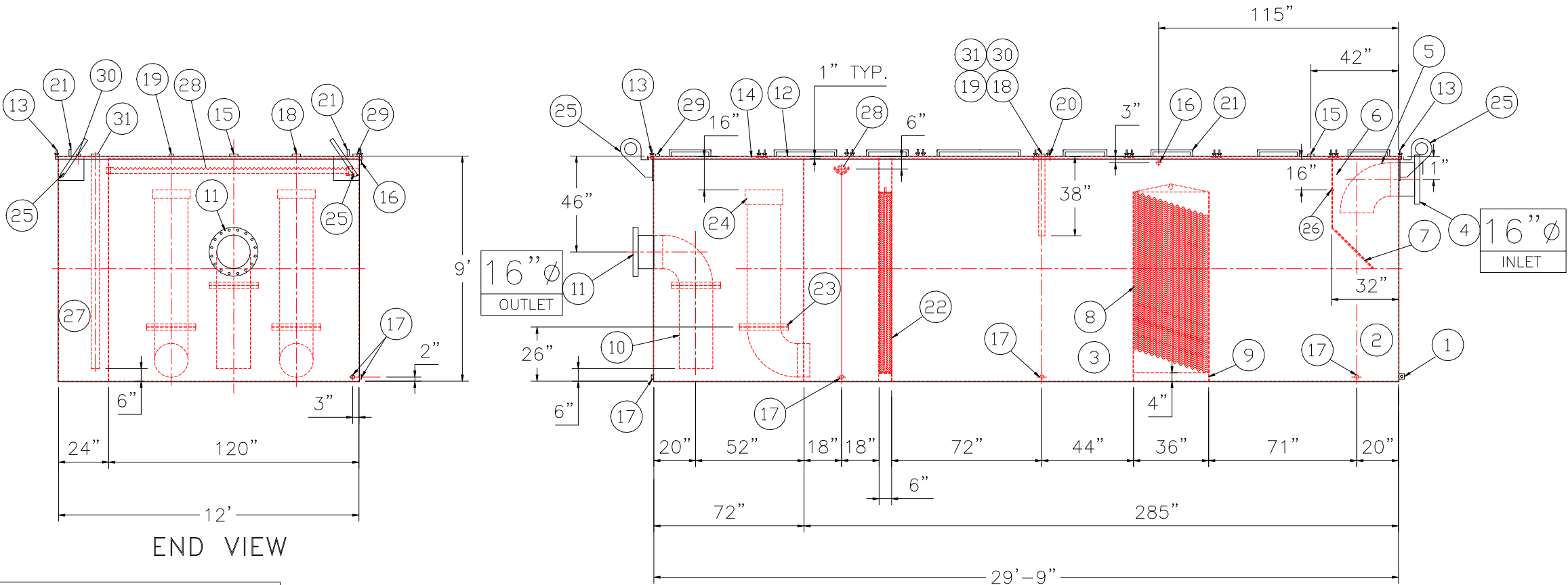
- 1. ALL INTERNAL MATERIAL IS 10 GA
- 2. ALL THREADED DRAIN FITTINGS TO HAVE STEEL THREADED PLUGS AND COATED WITH TANK
- 3. ALL OTHER THREADED FITTINGS TO HAVE PVC THREADED PLUGS
- 4. LIFTING LUGS HAVE REINFORCING PLATES

PROVIDED EQUIPMENT

- 1. 3"x3"x1/4" FLAT W/ 9/16"Ø HOLE DRILLED IN CENTER (GROUNDING LUG)
- 2. SEDIMENT CHAMBER
- 3. OIL WATER SEPARATOR CHAMBER
- 4. 150# R.F.S.O. FLANGED INLET
- 5. STEEL INLET ELBOW PIPING
- 6. VELOCITY HEAD DIFFUSION BAFFLE 10GA
- 7. WEAR PLATE (1/4" MATERIAL)
- 8. REMOVABLE PARALLEL CORRUGATED PLATE COALESCER (CORELLA PVC PLATES) 1" PLATE SPACING
- 9. SLUDGE BAFFLE - 10GA
- 10. FLANGED PVC OUTLET DOWNCOMER PIPE
- 11. 150# R.F.S.O. FLANGED OUTLET W/ INTERNAL STEEL ELBOW & FLANGE
- 12. (8) PIECE COVER W/ 5/8" BOLT HOLES - 7 GA
- 13. NUTS & BOLTS W/ LARGE WING (CORROSION RESISTANT)
- 14. GASKET MATERIAL (FOR EACH REMOVABLE COVER)
- 15. 3"Ø FNPT (CLEAN-OUT)
- 16. 2"Ø FNPT (VENT)
- 17. 2"Ø FNPT (DRAIN)
- 18. 3"Ø FNPT FULL COUPLING WITH 3" INTERNAL PVC PIPE (OIL PUMP OUT IN SEPERATOR CHAMBER)
- 19. 2"Ø FNPT (SEPARATOR CHAMBER INTERFACE LEVEL SENSOR)
- 20. 7GA. CROSSMEMBER FOR OIL PUMP-OUT & LEVEL SENSOR FITTINGS IN SEPARATOR AND OIL HOLDING CHAMBERS
- 21. HANDLES PER H.T. STANDARD
- 22. 6" THICK REMOVABLE PETROSCREEN CARTRIDGE COALESCER
- 23. 16"Ø STEEL ELBOW W/ FLANGE WELDED TO TOP FOR PVC RISER PIPES
- 24. 16"Ø ADJUSTABLE FERNCO COUPLING
- 25. 3/4" THICK LIFTING LUG ANGLED TOWARD CENTER
- 26. 1"Ø FNPT COUPLING W/ PLUG
- 27. OIL HOLDING COMPARTMENT
- 28. 3" FNPT COUPLING WITH SAWTOOTH TYPE PVC OIL SKIMMER AND PIPE SUPPORT SHELF
- 29. 2"Ø FNPT HALF COUPLING (SPARE)
- 30. 2"Ø FNPT (HIGH LEVEL OIL HOLDING CHAMBER LEVEL SENSOR)
- 31. 3"Ø FNPT FULL COUPLING WITH 3" INTERNAL PVC PIPE (OIL PUMP OUT IN OIL HOLDING CHAMBER)



REMOVABLE COVERS (8) REQUIRED
PLAN VIEW



ELEVATION

NOTE:
ALL RIGHTS RESERVED. THIS DRAWING OR ANY PART THEREOF MUST NOT BE REPRODUCED IN ANY FORM WITHOUT THE WRITTEN PERMISSION OF HIGHLAND TANK.
HIGHLAND TANK SHALL BE RESPONSIBLE ONLY FOR ITEMS INDICATED ON THIS FABRICATION DRAWING UNLESS OTHERWISE NOTED. CUSTOMER IS RESPONSIBLE FOR VERIFYING CORRECTNESS OF SIZE / LOCATION OF FITTINGS, ACCESSORIES & COATINGS SHOWN ON THIS DRAWING

REVISIONS



Highland Tank

U.S. Patent #4,722,800 Canadian Patent # 1,296,263

20000 GALLON OIL WATER SEPARATOR
RECTANGULAR, HTC, S-SERIES

CUSTOMER:

PROJECT:

QUOTE NO:

CHK'D BY:

SCALE:
1/4"=1'-0"

DATE:
1-14-09

DWG. BY:

DWG. NO.:
20000RECSWHTCS