

**GENERAL SPECIFICATIONS**

NO. REQ'D: (1)  
CAPACITY: 20000 GALLONS  
TYPE: RECTANGULAR, HTC, ABOVEGROUND, SINGLE WALL  
MATERIAL: MILD CARBON STEEL  
FLOW RATE: 2000 GPM  
GAUGE:  
SHELL- 1/4"  
HEADS- 1/4"

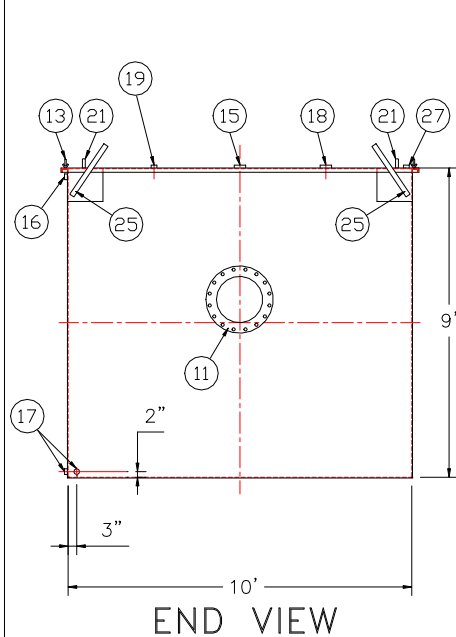
**SURFACE PREP:**  
SSPC NO.10 BLAST ALL INTERIOR SURFACES  
SSPC NO.6 BLAST ALL EXTERIOR SURFACES

COATING:	MATERIAL	THICKNESS
EXTERIOR-	CHEMPRIME 3001	(3-6 MILS)
	CHEMLINE 3300	(2-3 MILS)
	TOP COAT "WHITE"	
INTERIOR-	CHEMLINE 4200 PW	(15 MILS)

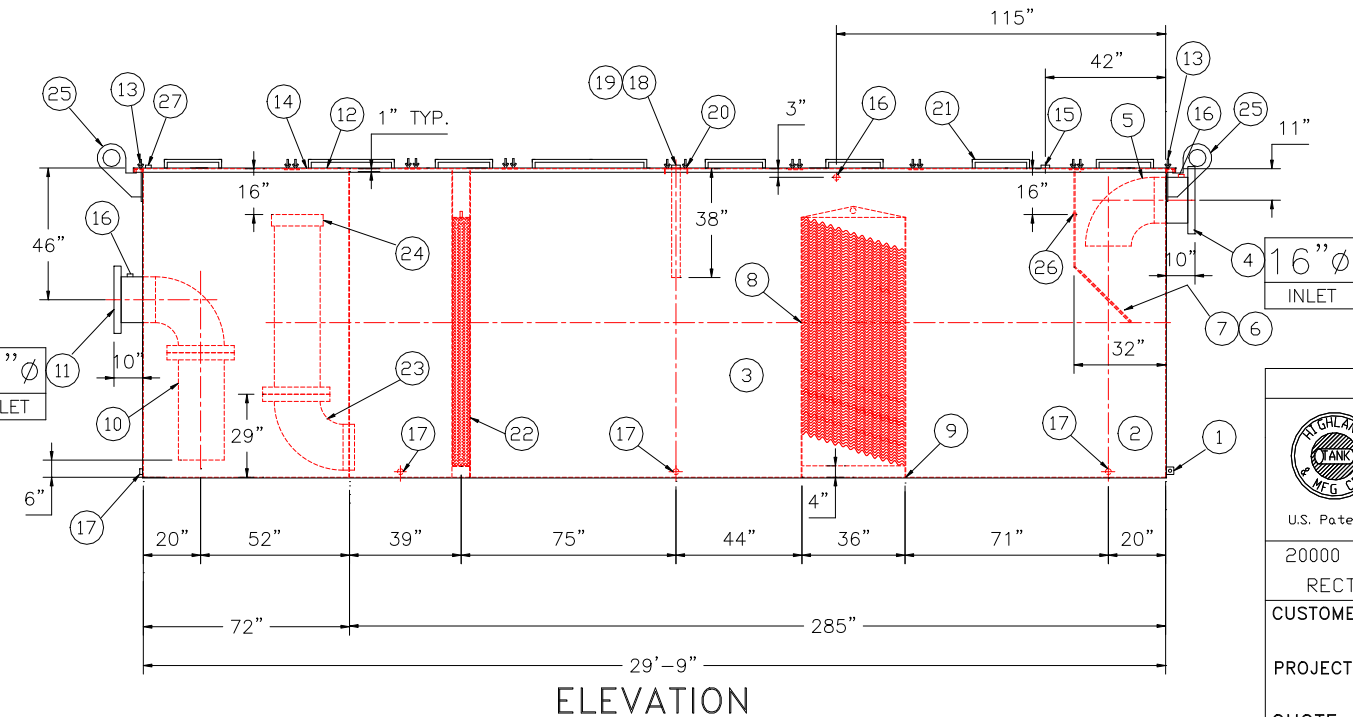
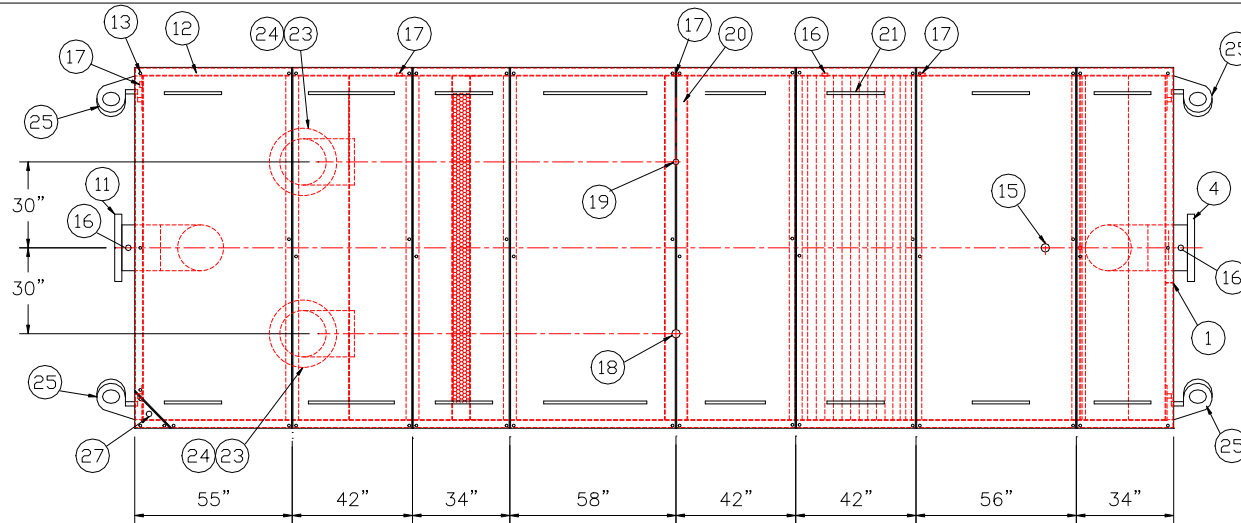
**CONSTRUCTION:**  
BUTT FIT & WELD ALL CORNERS IN & OUT

**NOTES**

- ALL INTERNAL MATERIAL IS 10 GA
- ALL THREADED DRAIN FITTINGS TO HAVE STEEL THREADED PLUGS AND COATED WITH TANK
- ALL OTHER THREADED FITTINGS TO HAVE PVC THREADED PLUGS
- LIFTING LUGS HAVE REINFORCING PLATES



NOTE :  
ALL RIGHTS RESERVED. THIS DRAWING OR ANY PART THEREOF MUST NOT BE REPRODUCED IN ANY FORM WITHOUT THE WRITTEN PERMISSION OF HIGHLAND TANK.  
HIGHLAND TANK SHALL BE RESPONSIBLE ONLY FOR ITEMS INDICATED ON THIS FABRICATION DRAWING UNLESS OTHERWISE NOTED. CUSTOMER IS RESPONSIBLE FOR VERIFYING CORRECTNESS OF SIZE / LOCATION OF FITTINGS , ACCESSORIES & COATINGS SHOWN ON THIS DRAWING



- PROVIDED EQUIPMENT**
- 3"x3"x1/4" FLAT W/ 9/16"Ø HOLE DRILLED IN CENTER (GROUNDING LUG)
  - SEDIMENT CHAMBER
  - OIL WATER SEPARATOR CHAMBER
  - 150# RFSO FLANGED INLET
  - STEEL INLET ELBOW PIPING
  - VELOCITY HEAD DIFFUSION BAFFLE - 10GA
  - WEAR PLATE - 1/4"
  - REMOVABLE PARALLEL CORRUGATED PLATE COALESCER. CORELLA PVC PLATES (1" PLATE SPACING)
  - SLUDGE BAFFLE - 10GA
  - FLANGED PVC OUTLET DOWNCOMER PIPE
  - 150# RFSO FLANGED OUTLET W/ INTERNAL STEEL ELBOW AND FLANGE
  - (8) PIECE COVER W/ 5/8" BOLT HOLES - 7 GA
  - NUTS & BOLTS W/ LARGE WING NUTS-TYP. (CORROSION RESISTANT)
  - GASKET MATERIAL (FOR EACH REMOVABLE COVER)
  - 3"Ø FNPT (CLEAN-OUT)
  - 2"Ø FNPT (VENT)
  - 2"Ø FNPT HALF COUPLING (DRAIN) W/ STEEL PLUG
  - 3"Ø FNPT FULL COUPLING W/ 3" Ø INTERNAL PVC PIPE (OIL PUMPOUT)
  - 2"Ø FNPT HALF COUPLING (INTERFACE LEVEL SENSOR)
  - 7GA. CROSSMEMBER 9" WIDE FOR OIL PUMP-OUT AND LEVEL SENSOR FTGS.
  - HANDLES PER H.T. STANDARD
  - 6" THICK REMOVABLE PETROSCREEN CARTRIDGE COALESCER
  - 10"Ø STEEL ELBOW W/ FLANGE WELDED TO TOP FOR PVC RISER PIPES
  - 10"Ø ADJUSTABLE FERNCO COUPLING
  - 3/4 THICK LIFTING LUG ANGLED TOWARD CENTER
  - 1"Ø FNPT COUPLING W/ PLUG
  - 2"Ø FNPT HALF COUPLING (SPARE)

**REVISIONS**

 **Highland Tank**

U.S. Patent #4,722,800 Canadian Patent # 1,296,263

20000 GALLON OIL WATER SEPARATOR  
RECTANGULAR, HTC, SINGLE WALL

CUSTOMER:

PROJECT:

QUOTE NO:

CHK'D BY:

SCALE: 1/4"=1'-0" DATE: DWG. BY: DWG. NO: 20000RECSWHTC

UNLESS OTHERWISE SPECIFIED DIMENSIONS ARE IN INCHES  
TOLERANCES ARE + OR - 1"

GENERAL SPECIFICATIONS

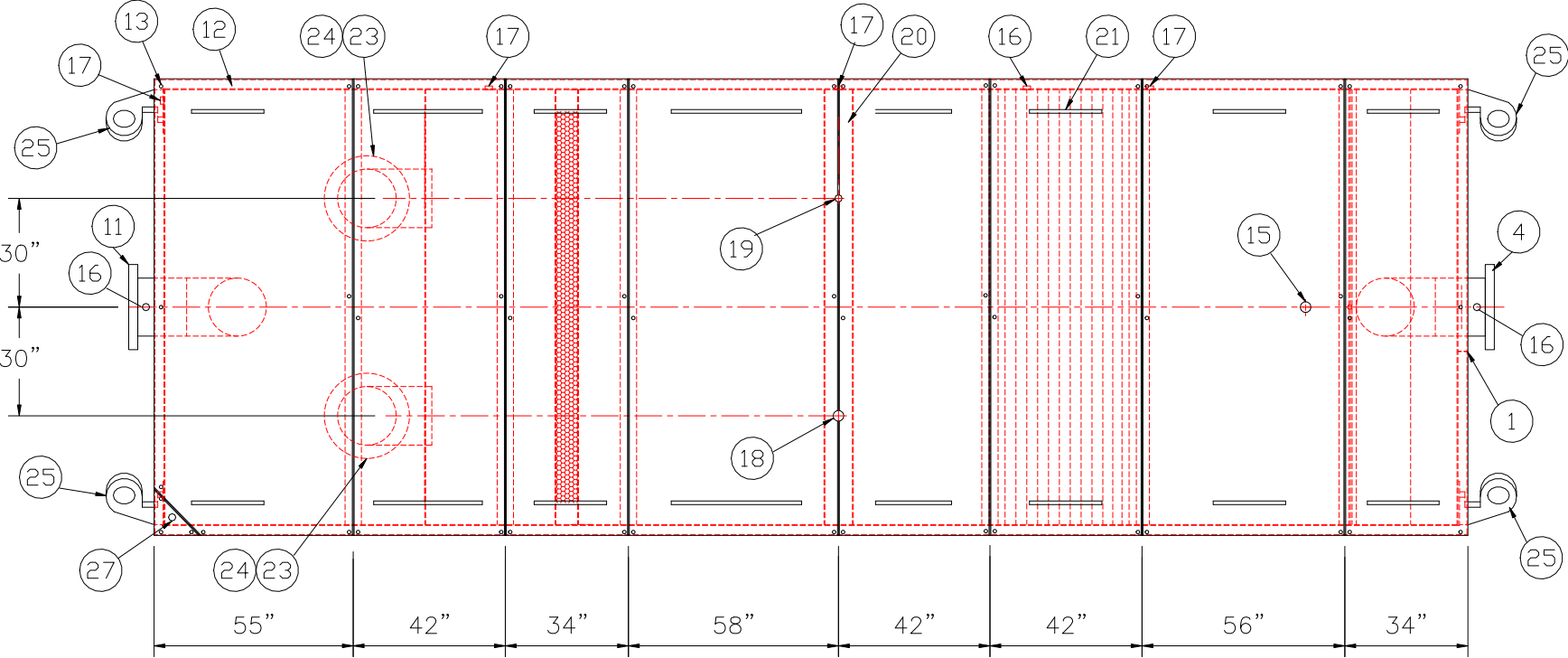
NO. REQ'D: (1)  
CAPACITY: 20000 GALLONS  
TYPE: RECTANGULAR, HTC, ABOVEGROUND, SINGLE WALL  
MATERIAL: MILD CARBON STEEL  
FLOW RATE: 2000 GPM  
GAUGE:  
SHELL- 1/4"  
HEADS- 1/4"  
SURFACE PREP:  
SSPC NO.10 BLAST ALL INTERIOR SURFACES  
SSPC NO.6 BLAST ALL EXTERIOR SURFACES  
COATING: MATERIAL THICKNESS  
EXTERIOR- CHEMPRIME 3001 (3-6 MILS)  
CHEMLINE 3300 (2-3 MILS)  
TOP COAT "WHITE"  
INTERIOR- CHEMLINE 4200 PW (15 MILS)  
CONSTRUCTION:  
BUTT FIT & WELD ALL CORNERS IN & OUT

NOTES

1. ALL INTERNAL MATERIAL IS 10 GA  
2. ALL THREADED DRAIN FITTINGS TO HAVE STEEL THREADED PLUGS AND COATED WITH TANK  
3. ALL OTHER THREADED FITTINGS TO HAVE PVC THREADED PLUGS  
4. LIFTING LUGS HAVE REINFORCING PLATES

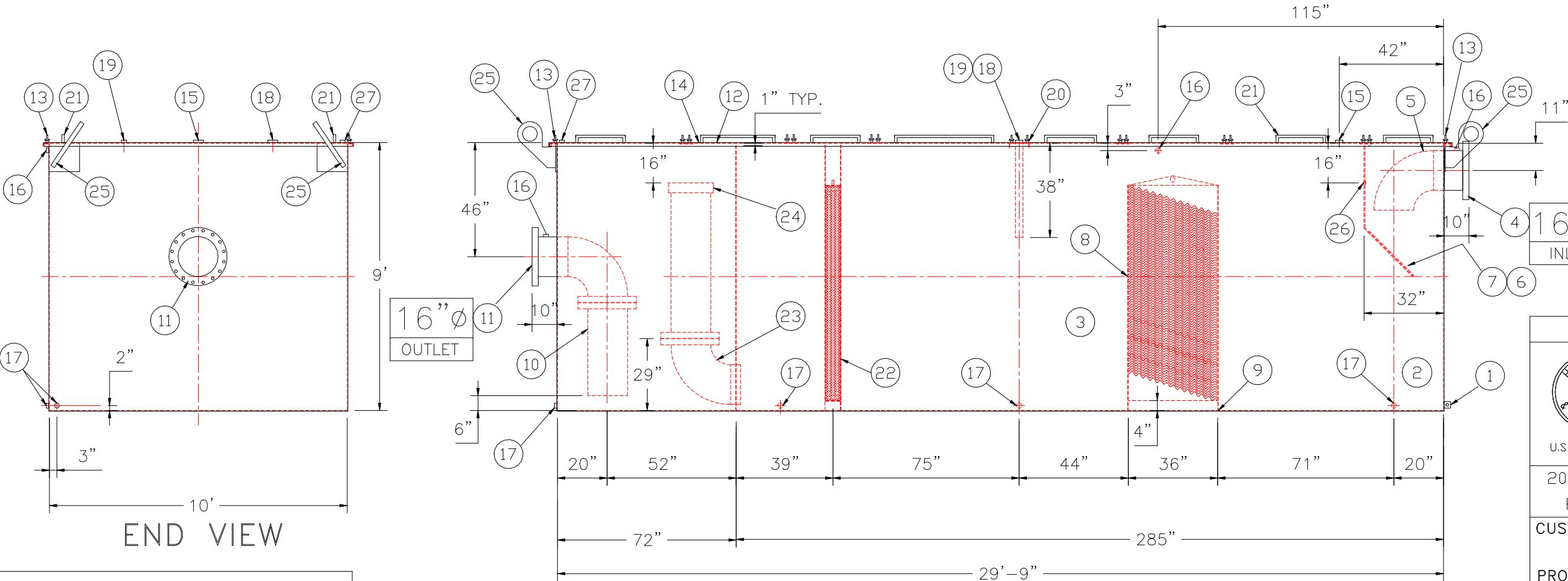
PROVIDED EQUIPMENT

1. 3"x3"x1/4" FLAT W/ 9/16"Ø HOLE DRILLED IN CENTER (GROUNDING LUG)  
2. SEDIMENT CHAMBER  
3. OIL WATER SEPARATOR CHAMBER  
4. 150# RFSSO FLANGED INLET  
5. STEEL INLET ELBOW PIPING  
6. VELOCITY HEAD DIFFUSION BAFFLE - 10GA  
7. WEAR PLATE - 1/4"  
8. REMOVABLE PARALLEL CORRUGATED PLATE COALESCER. CORELLA PVC PLATES (1" PLATE SPACING)  
9. SLUDGE BAFFLE - 10GA  
10. FLANGED PVC OUTLET DOWNCOMER PIPE  
11. 150# RFSSO FLANGED OUTLET W/ INTERNAL STEEL ELBOW AND FLANGE  
12. (8) PIECE COVER W/ 5/8" BOLT HOLES - 7 GA  
13. NUTS & BOLTS W/ LARGE WING NUTS-TYP. (CORROSION RESISTANT)  
14. GASKET MATERIAL (FOR EACH REMOVABLE COVER)  
15. 3"Ø FNPT (CLEAN-OUT)  
16. 2"Ø FNPT (VENT)  
17. 2"Ø FNPT HALF COUPLING (DRAIN) W/ STEEL PLUG  
18. 3"Ø FNPT FULL COUPLING W/ 3" Ø INTERNAL PVC PIPE (OIL PUMPOUT)  
19. 2"Ø FNPT HALF COUPLING (INTERFACE LEVEL SENSOR)  
20. 7GA. CROSSMEMBER 9" WIDE FOR OIL PUMP-OUT AND LEVEL SENSOR FTGS.  
21. HANDLES PER H.T. STANDARD  
22. 6" THICK REMOVABLE PETROSCREEN CARTRIDGE COALESCER  
23. 10"Ø STEEL ELBOW W/ FLANGE WELDED TO TOP FOR PVC RISER PIPES  
24. 10"Ø ADJUSTABLE FERNCO COUPLING  
25. 3/4 THICK LIFTING LUG ANGLED TOWARD CENTER  
26. 1"Ø FNPT COUPLING W/ PLUG  
27. 2"Ø FNPT HALF COUPLING (SPARE)



REMOVABLE COVERS (8) REQUIRED

PLAN VIEW



ELEVATION

END VIEW

NOTE :  
ALL RIGHTS RESERVED. THIS DRAWING OR ANY PART THEREOF MUST NOT BE REPRODUCED IN ANY FORM WITHOUT THE WRITTEN PERMISSION OF HIGHLAND TANK.  
HIGHLAND TANK SHALL BE RESPONSIBLE ONLY FOR ITEMS INDICATED ON THIS FABRICATION DRAWING UNLESS OTHERWISE NOTED. CUSTOMER IS RESPONSIBLE FOR VERIFYING CORRECTNESS OF SIZE / LOCATION OF FITTINGS , ACCESSORIES & COATINGS SHOWN ON THIS DRAWING

REVISIONS



**Highland Tank**

U.S. Patent #4,722,800 Canadian Patent # 1,296,263

20000 GALLON OIL WATER SEPARATOR  
RECTANGULAR, HTC, SINGLE WALL

CUSTOMER:

PROJECT:

QUOTE NO:

CHK'D BY:

UNLESS OTHERWISE SPECIFIED DIMENSIONS ARE IN INCHES  
TOLERANCES ARE + OR - 1"

SCALE:  
1/4"=1'-0"

DATE:

DWG. BY:

DWG. NO.:

20000RECSWHTC