

GENERAL SPECIFICATIONS

QUANTITY: ONE (1)
MODEL: PGI-20000-3 AR
CAPACITY: 20,000 GALLONS
TYPE: SINGLE WALL, ABOVEGROUND
MATERIAL: 5/16" CARBON STEEL WITH 3/8" BOTTOM
LAP FIT AND WELD INTERIOR AND EXTERIOR SEAMS
SURFACE PREP: SSPC-SP 10 BLAST INTERIOR SURFACES
SSPC-SP 6 BLAST EXTERIOR SURFACES
EXT. COATING: WHITE URETHANE - 3-5 MILS
INT. COATING: CHEMLINE 4200 PW (15 MILS DFT)
OPERATING PRESSURE: ATMOSPHERIC
GREASE HOLDING CAPACITY: 51,252 LBS

PROVIDED EQUIPMENT

1. 8"Ø SCH 40 PIPE STUB - INLET
2. 8"Ø SCH 40 PIPE STUB - OUTLET
3. DIFFUSION PLATE - 5/16"
4. 28" x 28" WEAR PLATE - 5/16"
5. GREASE DAM - 5/16"
6. STRIKER PLATE
7. SLUDGE BAFFLE - 5/16"
8. UNDERFLOW BAFFLE - 5/16"
9. 8"Ø 45° DIFFUSION ELBOW
10. 4"Ø OPENING FOR AIR CIRCULATION
11. STEEL OUTLET DOWNCOMER BAFFLE WITH OPEN TOP
12. 2" HC - VENT
13. 24"Ø MANWAY WITH 18" EASY-ACCESS HATCH
14. (5) W6x15 BEAM RUNNER WITH (2) 1-1/8" HOLES AT EACH TAPERED END FOR ANCHORING
15. 4" HC - NORMAL TANK VENT
16. 8"Ø-150# FFSO FLANGE FOR EMERGENCY VENT

THIS DRAWING IS SUBJECT TO CHANGE AT THE DISCRETION OF THE MANUFACTURER. CONTACT HIGHLAND TANK FOR THE MOST UP-TO-DATE INFORMATION AND DRAWINGS OF OUR PRODUCTS.



Highland Tank®

PASSIVE GREASE INTERCEPTOR

PGI-20000-3 AR

CUSTOMER:

PROJECT:

QUOTE NO.:

ORDER:

SCALE:

DATE:

DWG. BY:

DWG. NO.:

NTS

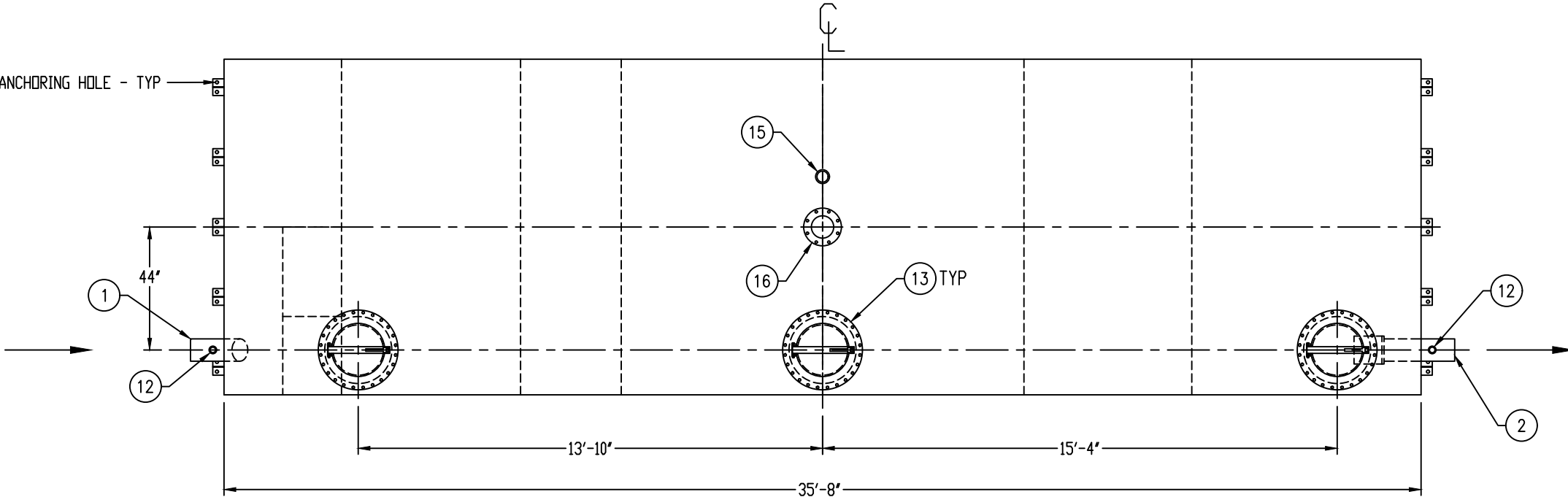
10/31/23

MGS

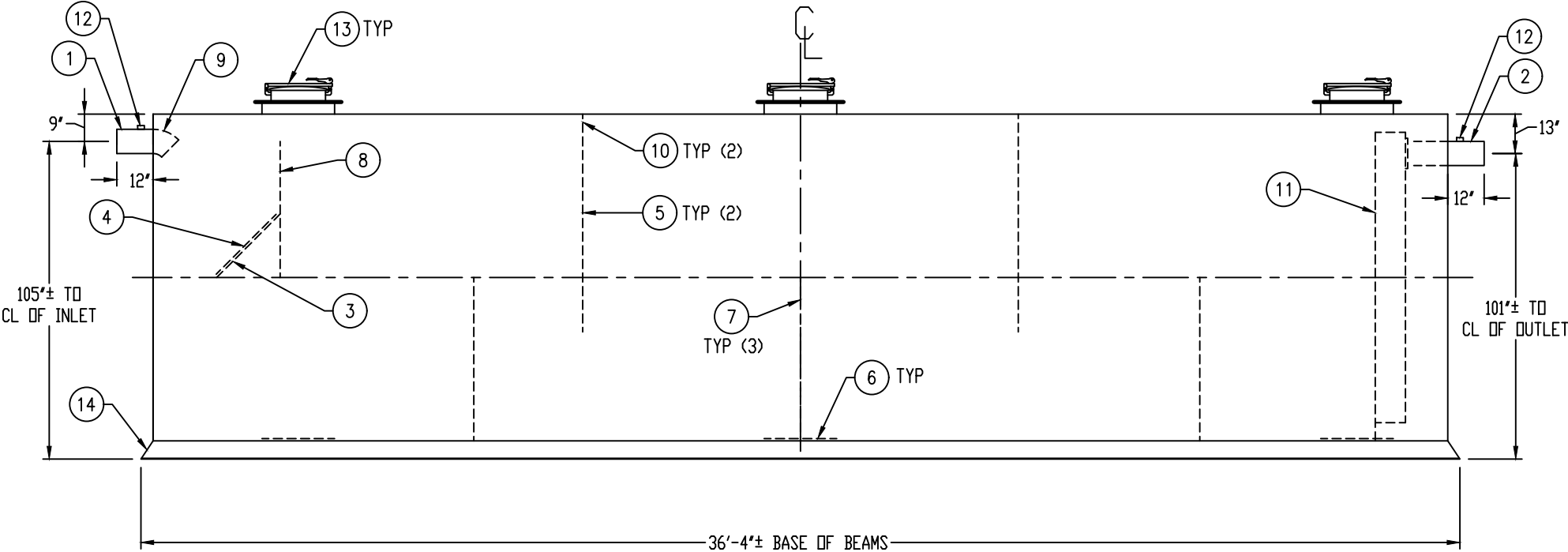
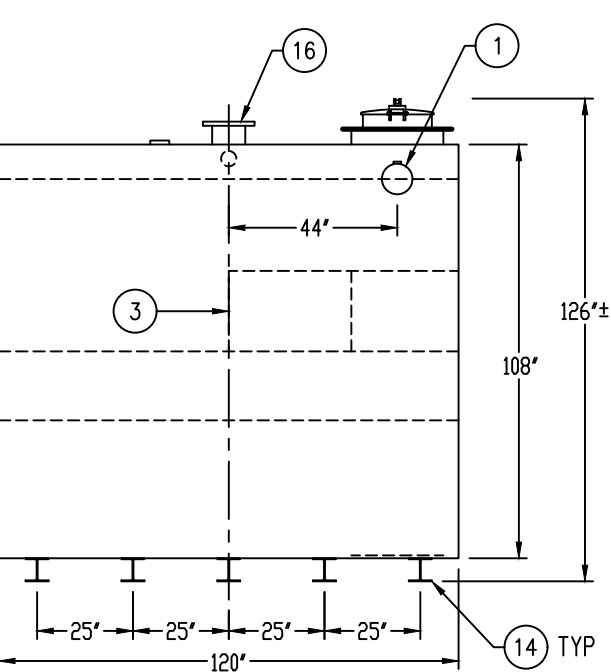
PGI-20000-3 AR

DIMENSION TOLERANCE: ± 1"

1-1/8"Ø ANCHORING HOLE - TYP



MANWAYS OFFSET FOR EASE OF ACCESS - FLOW DIRECTION CAN BE REVERSED



NOTE:
ALL RIGHTS RESERVED. THIS DRAWING, OR ANY PART THEREOF, MUST NOT BE REPRODUCED IN ANY FORM WITHOUT WRITTEN PERMISSION FROM HIGHLAND TANK. UNLESS OTHERWISE NOTED, HIGHLAND TANK SHALL BE RESPONSIBLE ONLY FOR ITEMS INDICATED IN THIS FABRICATION DRAWING. THE CUSTOMER IS RESPONSIBLE FOR VERIFYING THE CORRECTNESS OF THE TYPE, SIZE, AND LOCATION OF ALL FITTINGS, ACCESSORIES, AND COATINGS SHOWN ON THIS DRAWING.