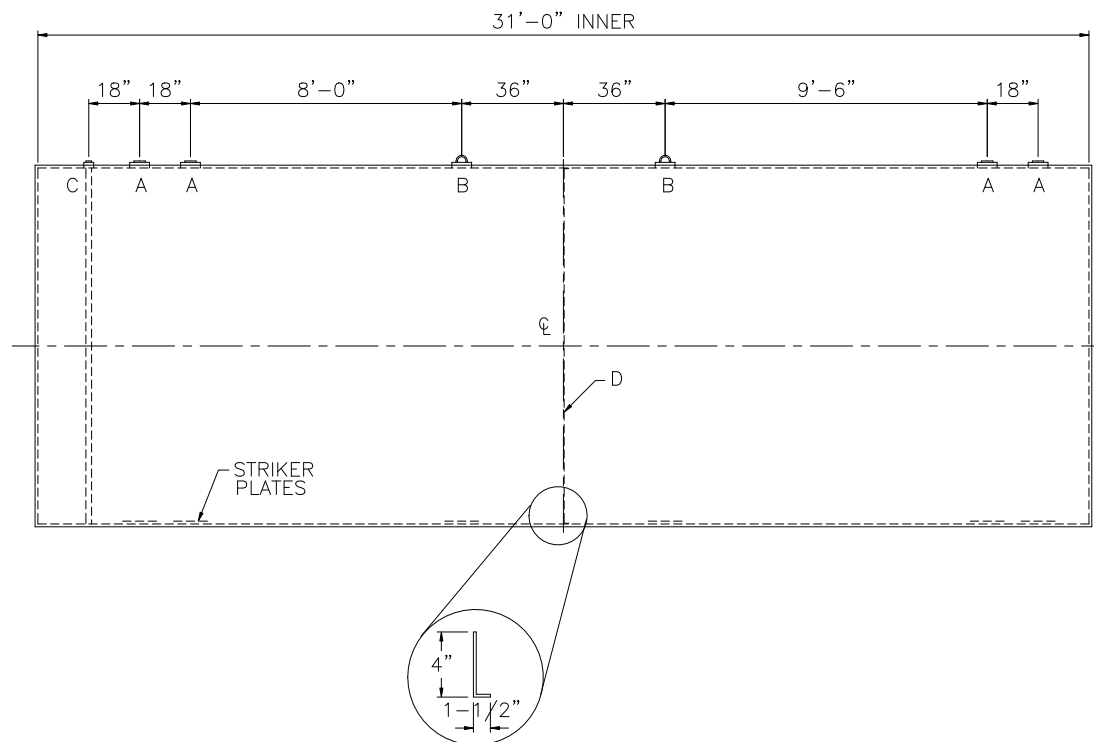


Diagram illustrating the TITAN 10' x 10' Inflatable Airbeam Inflatable Pool. The pool is shown in a top-down view, featuring a central circular area labeled "TITAN" and "INNER". The dimensions are given as $\varnothing 9'-10"$ for the inner circle and $\varnothing 10'-6"$ for the outer circle. A "NOTCH IN STIFFENER" is indicated at the top and bottom of the vertical line. The text "H IN STIFFENER" is at the bottom left.



DESIGN DATA

CAPACITY – 20,000 GALLONS
TYPE – DOUBLE WALL – 360° TYPE II
NO. REQ. – –
OPERATING PRESSURE – ATMOSPHERIC
TANK MATERIAL – MILD CARBON STEEL
THICKNESS – HEADS– 1/4"
THICKNESS – SHELL – 1/4"
*GA THK. BASED ON 60" MAX. BURIAL DEPTH
CONSTRUCTION – LAP WELD OUTSIDE ONLY
–
TANK TEST – INNER: 5 PSIG
OUTER: FULL VACUUM
INT. FINISH – NONE
–
EXT. FINISH – GREEN TITAN® WRAP
–
LABEL – UL-58/UL-1746 PART III

LEGEND

<u>LEGEND</u>	
A	4" CLOSE OFF FITTING
B	4" CLOSE OFF FITTING WITH REMOVABLE LIFT LUG
C	2" CLOSE OFF FITTING WITH INTERNAL INTERSTICE MONITOR PIPE
D	5/16" X 1-1/2" X 4" STIFFENER
E	—
F	—

