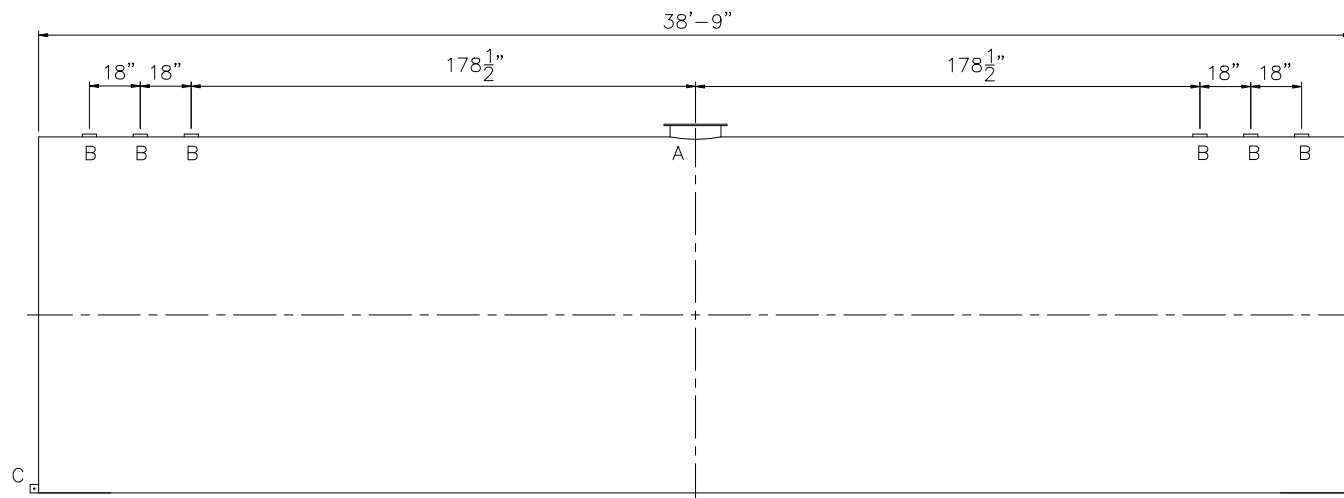


SHIPPING LUGS AS NEEDED

Technical drawing of a circular part. The drawing shows a circle with a center point. A diameter dimension line is drawn across the circle, with arrows pointing to the circumference. The dimension is labeled $\varnothing 10^{+0}_{-0.06}$ mm. A vertical dashed line passes through the center, and a horizontal dashed line also passes through the center, representing the axes of symmetry. A small rectangular feature is shown at the top of the circle, centered on the vertical axis.



| |
|---|
| <u>DESIGN DATA</u> |
| CAPACITY -25,000 GALLON |
| TYPE - SINGLE WALL |
| NO. REQ. - - |
| OPERATING PRESSURE -ATMOSPHERIC |
| SPECIFIC GRAVITY = 1.0 |
| TANK MATERIAL - MILD CARBON STEEL |
| THICKNESS - HEADS: 5/16" |
| THICKNESS - SHELL: 1/4" |
| CONSTRUCTION - LAP WELD OUTSIDE ONLY - |
| TANK TEST -5 PSIG - |
| INT. FINISH - NONE - |
| EXT. FINISH -SHOP PRIMER - |
| LABEL - UL 142 |

| LEGEND | |
|--------|---|
| A | 18" LOOSE BOLT MANWAY [PRIMARY EMERGENCY VENT] |
| B | 4" FITTING |
| C | FB-3"x 1/4"x3" WITH 5/8"Ø HOLE ON CL (GROUNDING LUG) |
| D | — |
| E | — |
| F | — |

| | | | | | |
|---|--|------------------------|--|--------------|--|
|  | | | | | |
|  | | <h1>Highland Tank</h1> | | | |
| UNLESS NOTED, TOLERANCES ARE $\pm 1"$ | | | | | |
| 25,000 GAL 126" \emptyset SW AG HORIZONTAL | | | | | |
| CUSTOMER: | | | | | |
| PROJECT: | | | | | |
| QUOTE NO: | | | | CHK'D BY: | |
| SCALE: 1/4"=1'-0" | | DATE: | | DWG. NO.: | |
| | | DWG. BY: | | 25000AHSW126 | |