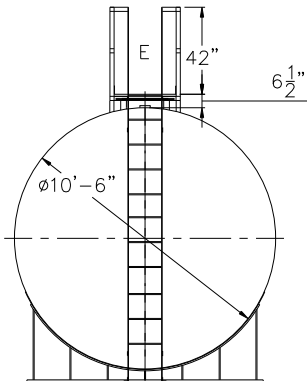


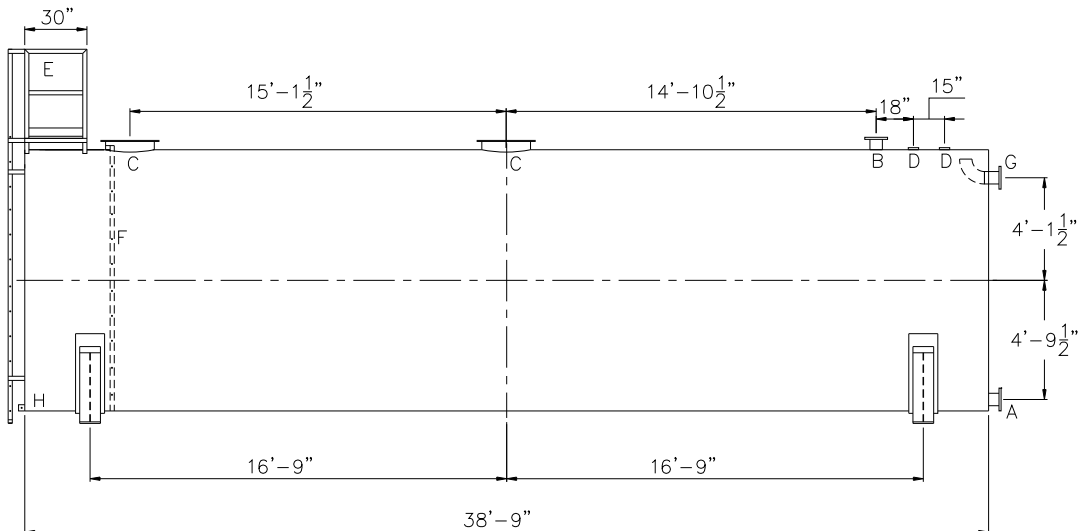
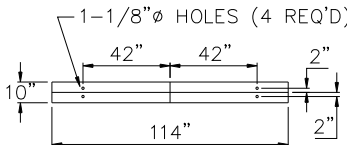
NOTE: ALL RIGHTS RESERVED. THIS DRAWING MUST NOT BE REPRODUCED IN ANY FORM WITHOUT THE WRITTEN PERMISSION OF HIGHLAND TANK®. HIGHLAND TANK® SHALL BE RESPONSIBLE ONLY FOR ITEMS INDICATED ON THIS FABRICATION DRAWING UNLESS OTHERWISE NOTED. CUSTOMER IS RESPONSIBLE FOR VERIFYING CORRECTNESS OF SIZE AND LOCATION OF FITTINGS, ACCESSORIES, AND COATINGS SHOWN ON THIS DRAWING.

TOUCH UP OF FINISHED PAINT IS
REQUIRED BY INSTALLATION
CONTRACTOR. TOUCH UP PAINT SHIPPED
WITH TANK.

SHIPPING LUGS AS NEEDED



(2) 10'-6"Ø x 6" HIGH UL STYLE
SADDLES, SHIP LOOSE WITH TANK.



DESIGN DATA	LEGEND	
CAPACITY – 25,000 GALLONS	A	FLANGE – SUPPLY
TYPE – POTABLE WATER TANK (PWT)	B	FLANGE – VENT
NO. REQ. –	C	24" X ¼" PLATE TIGHT BOLT MANWAY WITH ½" THICK NEO-CORK GASKET
OPERATING PRESSURE – ATMOSPHERIC	D	4" FNPT CONNECTION
TANK MATERIAL – MILD CARBON STEEL	E	STD HTM EXTERNAL LADDER & PLATFORM ASSEMBLY – PAINTED SAFETY YELLOW AND SHIPPED LOOSE FOR INSTALLATION ON SITE BY OTHERS
THICKNESS: HEADS – 5/16"	F	HTM STD INTERNAL LADDER
THICKNESS: SHELL – 1/4"	G	FLANGE WITH INTERNAL 90° ELBOW SHOWN – OVERFLOW
CONSTRUCTION – LAP WELD INSIDE & OUTSIDE	H	FB-3"x 1/4"x3" WITH 5/8"Ø HOLE ON CL (GROUNDING LUG)
TANK TEST – 5 PSIG		
INT. FINISH – SP10 BLAST HighDRO®-LINER PLUS FOR NSF 61 APPLICATIONS		
EXT. FINISH – SSPC SP6 BLAST, WHITE URETHANE PAINT		
LABEL – NONE		

		<h1>Highland Tank[®]</h1>	
<h2>HighDRO[®] WATER STORAGE TANK</h2>			
<p>25,000 GAL 126"Ø AH POTABLE WATER TANK</p>			
<p>CUSTOMER:</p>			
<p>PROJECT:</p>			
<p>QUOTE NO:</p>		<p>CHK'D BY:</p>	
<p>SCALE: 3/16"=1'-0"</p>	<p>DATE: XX/XX/XX</p>	<p>DWG. BY: XXX</p>	<p>DWG. NO: 25000AHSWHPWT126</p>