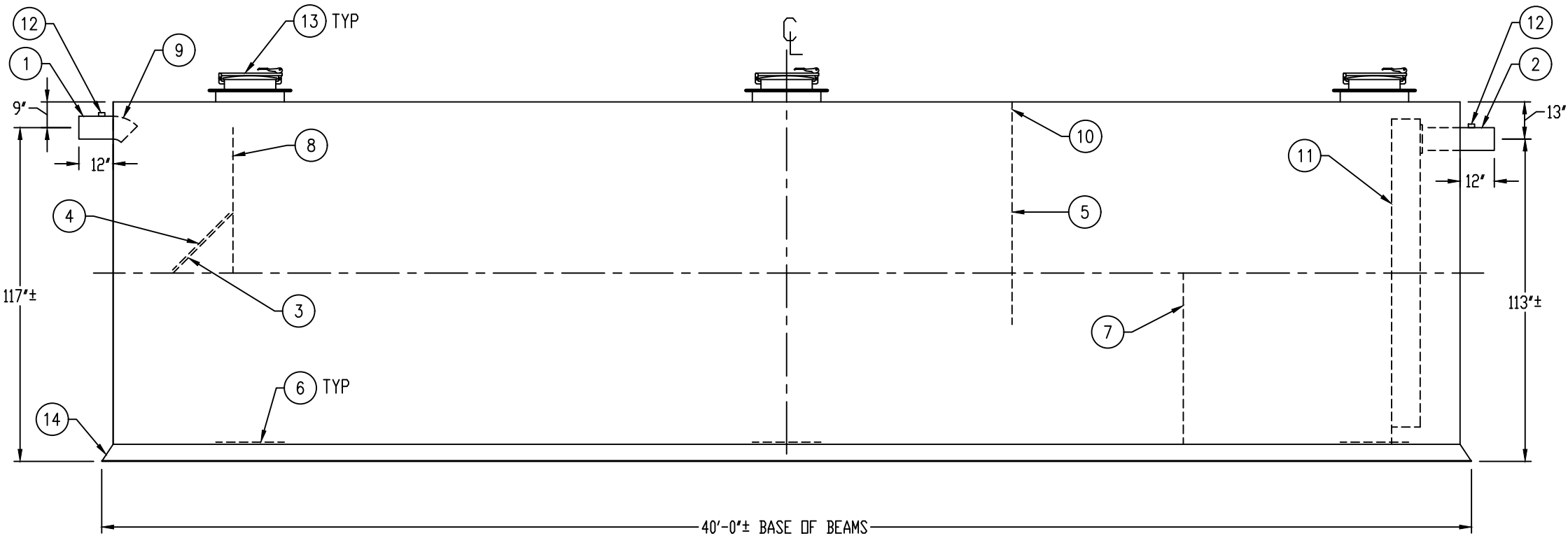
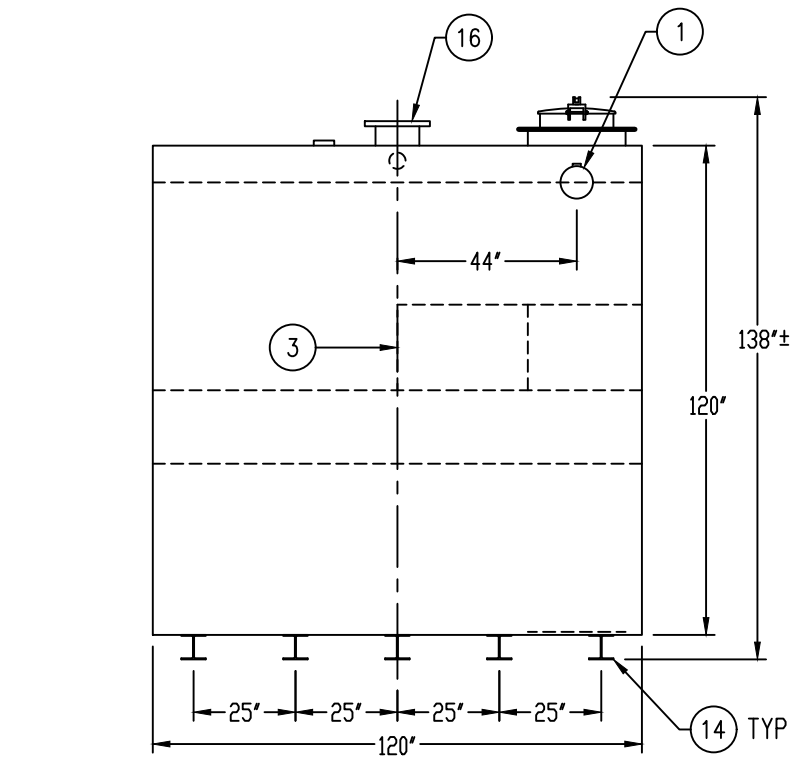
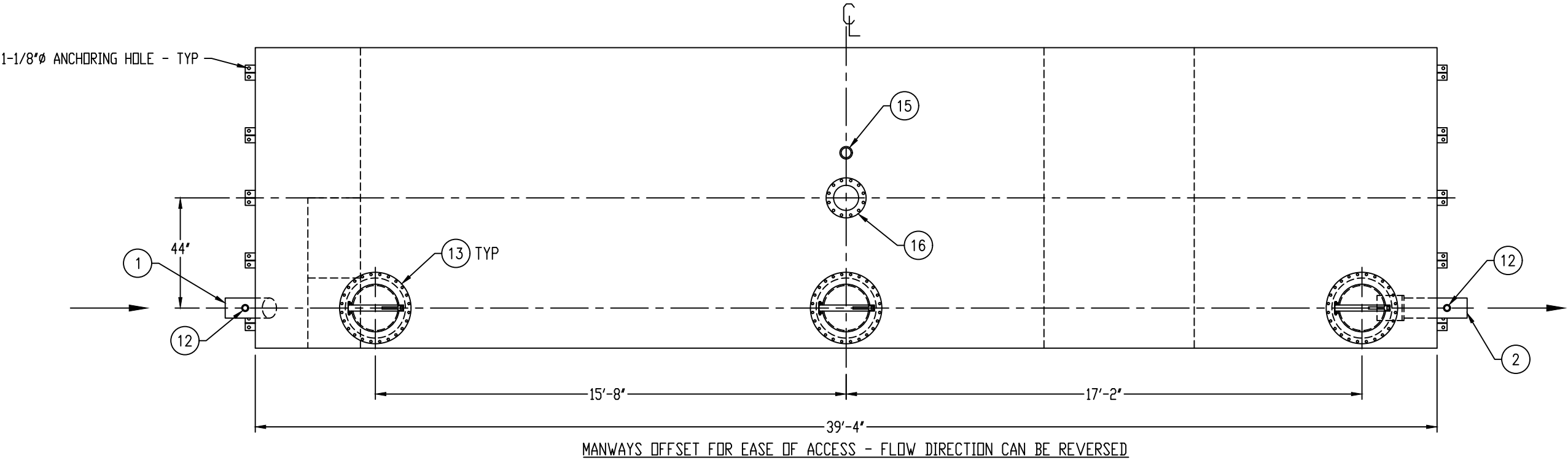


GENERAL SPECIFICATIONS

QUANTITY: ONE (1)  
MODEL: PGI-25000-2 AR  
CAPACITY: 25,000 GALLONS  
TYPE: SINGLE WALL, ABOVEGROUND  
MATERIAL: 5/16" CARBON STEEL WITH 3/8" BOTTOM  
LAP FIT AND WELD INTERIOR AND EXTERIOR SEAMS  
SURFACE PREP: SSPC-SP 10 BLAST INTERIOR SURFACES  
SSPC-SP 6 BLAST EXTERIOR SURFACES  
EXT. COATING: WHITE URETHANE - 3-5 MILS  
INT. COATING: CHEMLINE 4200 PW (15 MILS DFT)  
OPERATING PRESSURE: ATMOSPHERIC  
GREASE HOLDING CAPACITY: 63,973 LBS



PROVIDED EQUIPMENT

1. 8"Ø SCH 40 PIPE STUB - INLET
2. 8"Ø SCH 40 PIPE STUB - OUTLET
3. DIFFUSION PLATE - 5/16"
4. 28" x 28" WEAR PLATE - 5/16"
5. GREASE DAM - 5/16"
6. STRIKER PLATE
7. SLUDGE BAFFLE - 5/16"
8. UNDERFLOW BAFFLE - 5/16"
9. 8"Ø 45° DIFFUSION ELBOW
10. 4"Ø OPENING FOR AIR CIRCULATION
11. STEEL OUTLET DOWNCOMER BAFFLE WITH OPEN TOP

PROVIDED EQUIPMENT

- (CONTINUED)
12. 2" HC - VENT
  13. 24"Ø MANWAY WITH 18" EASY-ACCESS HATCH
  14. (5) W6x15 BEAM RUNNER WITH (2) 1-1/8" HOLES AT EACH TAPERED END FOR ANCHORING
  15. 4" HC - NORMAL TANK VENT
  16. 10"Ø-150# FFSSO FLANGE FOR EMERGENCY VENT

NOTE:  
ALL RIGHTS RESERVED. THIS DRAWING, OR ANY PART THEREOF, MUST NOT BE REPRODUCED IN ANY FORM WITHOUT WRITTEN PERMISSION FROM HIGHLAND TANK. UNLESS OTHERWISE NOTED, HIGHLAND TANK SHALL BE RESPONSIBLE ONLY FOR ITEMS INDICATED ON THIS FABRICATION DRAWING. THE CUSTOMER IS RESPONSIBLE FOR VERIFYING THE CORRECTNESS OF THE TYPE, SIZE, AND LOCATION OF ALL FITTINGS, ACCESSORIES, AND COATINGS SHOWN ON THIS DRAWING.

THIS DRAWING IS SUBJECT TO CHANGE AT THE DISCRETION OF THE MANUFACTURER. CONTACT HIGHLAND TANK FOR THE MOST UP-TO-DATE INFORMATION AND DRAWINGS OF OUR PRODUCTS.

DIMENSION TOLERANCE: ± 1"



Highland Tank®

PASSIVE GREASE INTERCEPTOR  
PGI-25000-2 AR

CUSTOMER:

PROJECT:

QUOTE NO.:

SCALE:

NTS

DATE:

10/31/23

DWG. BY:

MGS

DWG. NO.:

PGI-25000-2 AR

ORDER: