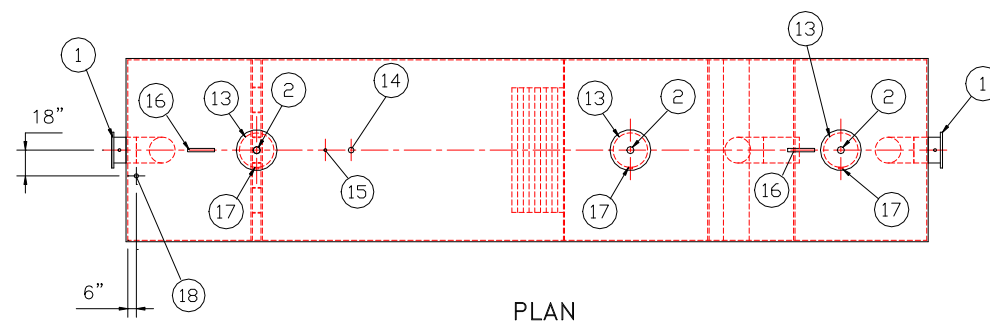


GENERAL SPECIFICATIONS

NO. REQ'D: (1)
CAPACITY: 25000 GALLONS
TYPE: HTC-G, ABOVEGROUND CYLINDRICAL, DOUBLE WALL
MATERIAL: MILD CARBON STEEL
FLOW RATE: 2500 GPM
GAUGE:
SHELL- INNER OUTER
1/4" 7 GA.
HEADS- 5/16" 1/4"
SURFACE PREP:
SSPC NO.6 BLAST ALL EXTERIOR SURFACES
COATING: MATERIAL THICKNESS
EXTERIOR- CHEMPRIME 3001 (3-6 MILS)
CHEMTHANE 3300 (2-3 MILS)
TOP COAT "WHITE"
INTERIOR- NONE
CONSTRUCTION :
LAP FIT & WELD ALL EXTERIOR SEAMS
OPERATING PRESSURE : ATMOSPHERIC

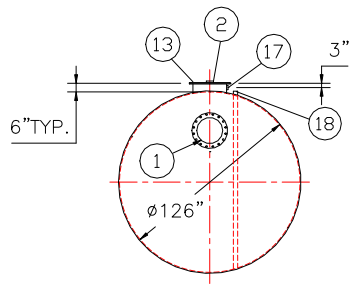


PLAN

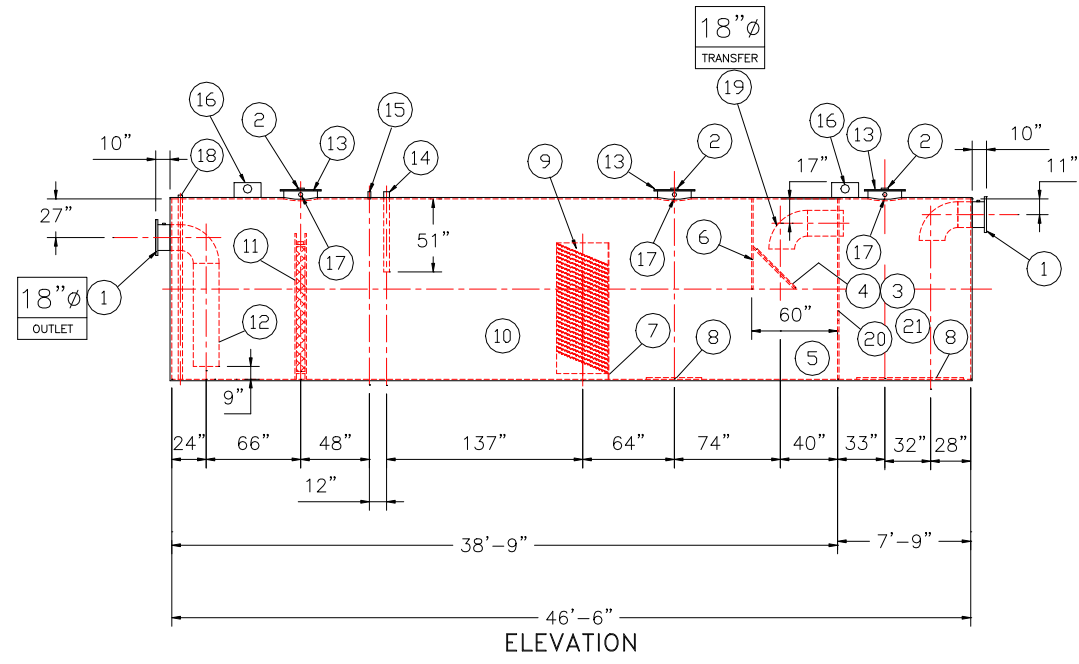
- ## PROVIDED EQUIPMENT
- 150# R.F.S.O. FLANGE W/ 2" FNPT FOR VENT
 - 4" FNPT FOR GAUGE WITH PLUG
 - VELOCITY HEAD DIFFUSION BAFFLE
 - WEAR PLATE
 - SEDIMENT CHAMBER
 - UNDERFLOW BAFFLE
 - SLUDGE BAFFLE
 - STRIKER PLATES
 - PARALLEL CORRUGATED PLATE COALESCER. CORELLA PVC PLATES (3" PLATE SPACING)
 - OIL/WATER SEPARATOR CHAMBER
 - 6" THICK PETROSCREEN COALESCER MATERIAL INSTALLED W/ PULL ROD SHIPPED LOOSE
 - STEEL OUTLET DOWNCOMER
 - 24" MANWAY WITH NEO-CORK GASKET
 - 4" FNPT FOR OIL PUMP-OUT WITH INTERNAL PVC PIPE INSTALLED
 - 2" FNPT FOR LEVEL SENSOR
 - LIFTING LUG
 - 2" FNPT FOR VENT
 - 2" FNPT FOR LEAK SENSOR
 - STEEL TRANSFER PIPING
 - 5/16" BULKHEAD
 - SLUDGE CHAMBER

NOTES

- ALL VENT PIPING BY INSTALLER



END VIEW



ELEVATION

NOTE :
ALL RIGHTS RESERVED. THIS DRAWING OR ANY PART THEREOF MUST NOT BE REPRODUCED IN ANY FORM WITHOUT THE WRITTEN PERMISSION OF HIGHLAND TANK.
HIGHLAND TANK SHALL BE RESPONSIBLE ONLY FOR ITEMS INDICATED ON THIS FABRICATION DRAWING UNLESS OTHERWISE NOTED. CUSTOMER IS RESPONSIBLE FOR VERIFYING CORRECTNESS OF SIZE / LOCATION OF FITTINGS , ACCESSORIES & COATINGS SHOWN ON THIS DRAWING

UNLESS OTHERWISE SPECIFIED DIMENSIONS ARE IN INCHES TOLERANCES ARE + OR - 1"
SCALE: 1/8"=1'-0" DATE: DWG. BY: DWG. NO.: 25000AGCYLDWHTCG

REVISIONS	
 <h1>Highland Tank</h1> <p>U.S. Patent #4,722,800 Canadian Patent # 1,296,263</p>	
25000 GALLON OIL WATER SEPARATOR HTC-G, ABOVEGROUND CYLINDRICAL, DOUBLE WALL	
CUSTOMER:	
PROJECT:	
QUOTE NO:	CHK'D BY:

GENERAL SPECIFICATIONS

NO. REQ'D: (1)
CAPACITY: 25000 GALLONS
TYPE: HTC-G, ABOVEGROUND CYLINDRICAL, DOUBLE WALL
MATERIAL: MILD CARBON STEEL
FLOW RATE: 2500 GPM
GAUGE:

	INNER	OUTER
SHELL-	1/4"	7 GA.
HEADS-	5/16"	1/4"
SURFACE PREP:		
SSPC NO.6 BLAST ALL EXTERIOR SURFACES		

COATING:	MATERIAL	THICKNESS
EXTERIOR-	CHEMPRIME 3001 CHEMTHANE 3300 TOP COAT "WHITE"	(3-6 MILS) (2-3 MILS)

INTERIOR- NONE

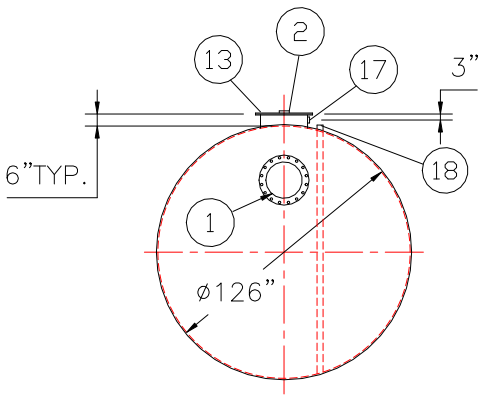
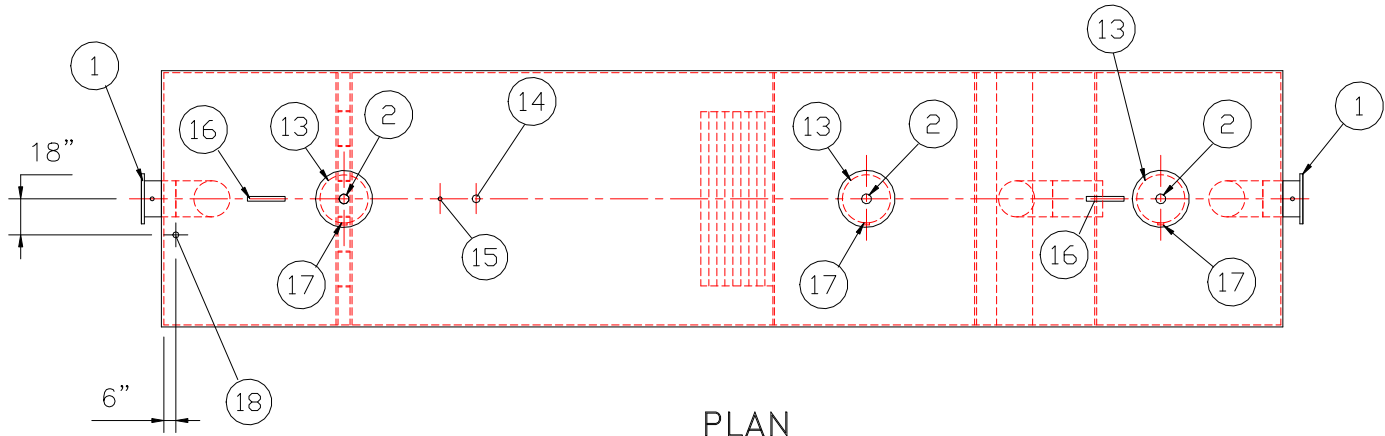
CONSTRUCTION :
LAP FIT & WELD ALL EXTERIOR SEAMS
OPERATING PRESSURE : ATMOSPHERIC

PROVIDED EQUIPMENT

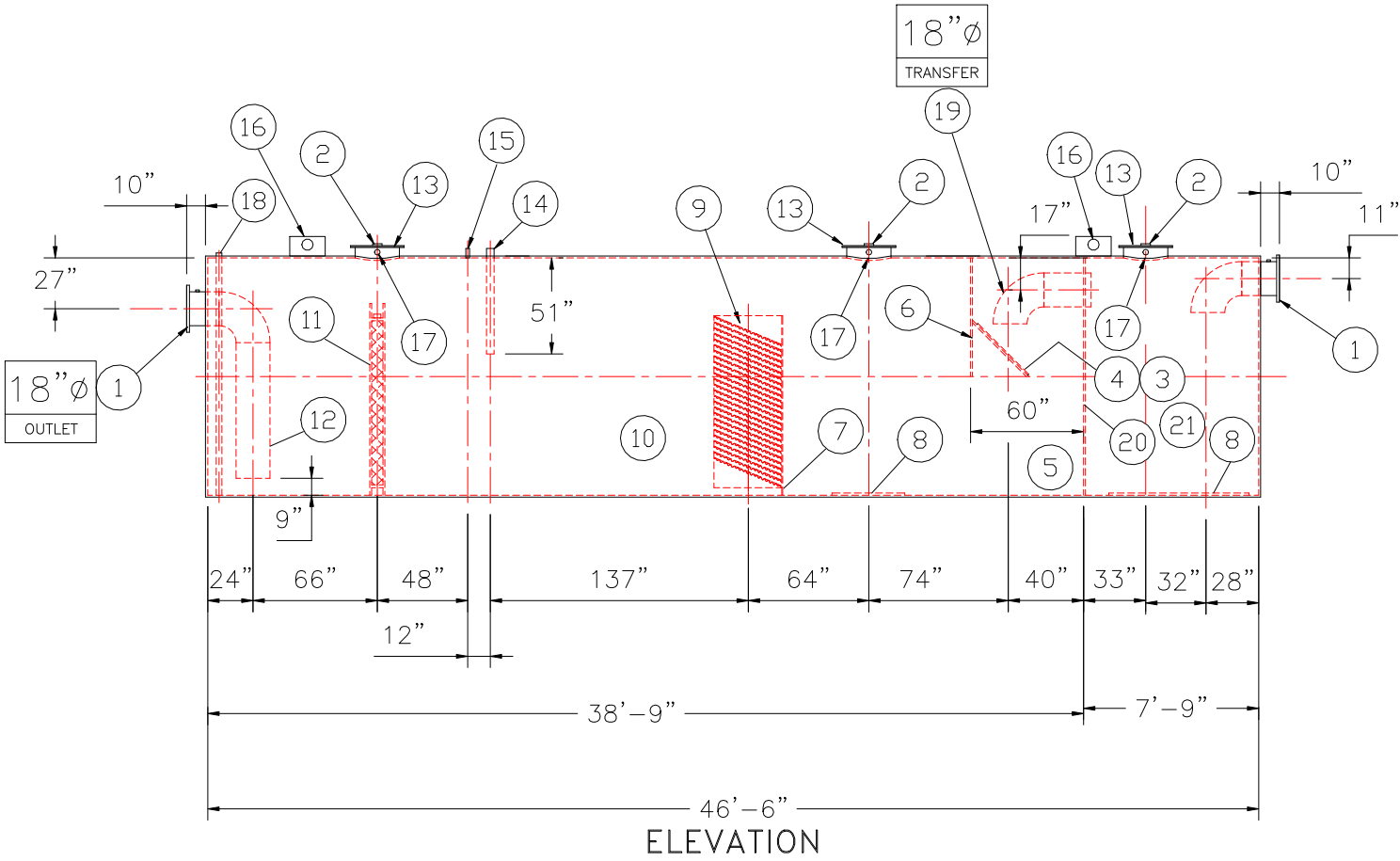
- 150# R.F.S.O. FLANGE W/ 2" FNPT FOR VENT
- 4"ø FNPT FOR GAUGE WITH PLUG
- VELOCITY HEAD DIFFUSION BAFFLE
- WEAR PLATE
- SEDIMENT CHAMBER
- UNDERFLOW BAFFLE
- SLUDGE BAFFLE
- STRIKER PLATES
- PARALLEL CORRUGATED PLATE COALESCER. CORELLA PVC PLATES (3" PLATE SPACING)
- OIL/WATER SEPARATOR CHAMBER
- 6" THICK PETROSCREEN COALESCER MATERIAL INSTALLED W/ PULL ROD SHIPPED LOOSE
- STEEL OUTLET DOWNCOMER
- 24"ø MANWAY WITH NEO-CORK GASKET
- 4"ø FNPT FOR OIL PUMP-OUT WITH INTERNAL PVC PIPE INSTALLED
- 2"ø FNPT FOR LEVEL SENSOR
- LIFTING LUG
- 2"ø FNPT FOR VENT
- 2"ø FNPT FOR LEAK SENSOR
- STEEL TRANSFER PIPING
- 5/16" BULKHEAD
- SLUDGE CHAMBER

NOTES

- ALL VENT PIPING BY INSTALLER



END VIEW



ELEVATION

NOTE :
ALL RIGHTS RESERVED. THIS DRAWING OR ANY PART THEREOF MUST NOT BE REPRODUCED IN ANY FORM WITHOUT THE WRITTEN PERMISSION OF HIGHLAND TANK.
HIGHLAND TANK SHALL BE RESPONSIBLE ONLY FOR ITEMS INDICATED ON THIS FABRICATION DRAWING UNLESS OTHERWISE NOTED. CUSTOMER IS RESPONSIBLE FOR VERIFYING CORRECTNESS OF SIZE / LOCATION OF FITTINGS , ACCESSORIES & COATINGS SHOWN ON THIS DRAWING

UNLESS OTHERWISE SPECIFIED DIMENSIONS ARE IN INCHES
TOLERANCES ARE + OR - 1"

SCALE:
1/8"=1'-0"

DATE:

DWG. BY:

CHK'D BY:

QUOTE NO:

DWG. NO.:

25000AGCYLDWHTCG

REVISIONS



Highland Tank

U.S. Patent #4,722,800 Canadian Patent # 1,296,263

25000 GALLON OIL WATER SEPARATOR
HTC-G, ABOVEGROUND CYLINDRICAL,
DOUBLE WALL

CUSTOMER:

PROJECT: