

NO. REQ'D: (1)  
CAPACITY: 25000 GALLONS  
TYPE: RECTANGULAR, HTC, ABOVEGROUND, SINGLE WALL  
MATERIAL: MILD CARBON STEEL  
GAUGE:  
SHELL- 3/8"  
HEADS- 3/8"

SURFACE PREP:		
SSPC NO.10 BLAST ALL INTERIOR SURFACES		
SSPC NO.6 BLAST ALL EXTERIOR SURFACES		
COATING:	MATERIAL	THICKNESS
EXTERIOR-	CHEMPRIME 3001	(3-6 MILS)
	CHEMLINE 3300	(2-3 MILS)
	TOP COAT "WHITE"	
INTERIOR-	CHEMLINE 4200 PW	(15 MILS)

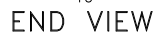
CONSTRUCTION:  
BUTT FIT & WELD ALL CORNERS IN & OUT

1. ALL INTERNAL MATERIAL IS 10 GA
2. ALL THREADED DRAIN FITTINGS TO HAVE STEEL THREADED PLUGS AND COATED WITH TANK
3. ALL OTHER THREADED FITTINGS TO HAVE PVC THREADED PLUGS
4. LIFTING LUGS HAVE REINFORCING PLATES



PLAN VIEW

- ## PROVIDED EQUIPMENT
1. 3"x3"x1/4" FLAT W/ 9/16" HOLE DRILLED IN CENTER (GROUNDING LUG)
  2. SEDIMENT CHAMBER
  3. OIL WATER SEPARATOR CHAMBER
  4. 150# RFSS FLANGED INLET
  5. STEEL INLET ELBOW PIPING
  6. VELOCITY HEAD DIFFUSION BAFFLE - 10GA
  7. WEAR PLATE - 1/4"
  8. REMOVABLE PARALLEL CORRUGATED PLATE COALESCER. CORELLA PVC PLATES. (1" PLATE SPACING)
  9. SLUDGE BAFFLE - 10GA
  10. FLANGED PVC OUTLET DOWNCOMER PIPE
  11. 150# RFSS FLANGED OUTLET W/ INTERNAL STEEL ELBOW AND FLANGE
  12. (9) PIECE COVER W/ 5/8" BOLT HOLES - 7 GA
  13. NUTS & BOLTS W/ LARGE WING NUTS-TYP. (CORROSION RESISTANT)
  14. GASKET MATERIAL (FOR EACH REMOVABLE COVER)
  15. 3"ø FNPT (CLEAN-OUT)
  16. 2"ø FNPT (VENT)
  17. 2"ø FNPT HALF COUPLING (DRAIN) W/ STEEL PLUG
  18. 3"ø FNPT FULL COUPLING W/ 3" ø INTERNAL PVC PIPE (OIL PUMP-OUT)
  19. 2"ø FNPT HALF COUPLING (INTERFACE LEVEL SENSOR)
  20. 7GA. CROSSMEMBER 9" WIDE FOR OIL PUMP-OUT AND LEVEL SENSOR FTGS.
  21. HANDLES PER H.T. STANDARD
  22. THICK REMOVABLE PETROSCREEN CARTRIDGE COALESCER
  23. 18" STEEL ELBOW W/ FLANGE WELDED TO TOP FOR PVC RISER PIPES
  24. 18" ADJUSTABLE FERROU COUPLING
  25. 3/4 THICK LIFTING LUG ANGLED TOWARD CENTER
  26. 1"ø FNPT COUPLING W/ PLUG
  27. 2"ø FNPT HALF COUPLING (SPARE)



NOTE :  
ALL RIGHTS RESERVED. THIS DRAWING OR ANY PART THEREOF MUST  
NOT BE REPRODUCED IN ANY FORM WITHOUT THE WRITTEN PERMISSION  
OF HIGHLAND TANK.  
HIGHLAND TANK SHALL BE RESPONSIBLE ONLY FOR ITEMS INDICATED  
ON THIS FABRICATION DRAWING UNLESS OTHERWISE NOTED. CUSTOMER  
IS RESPONSIBLE FOR VERIFYING CORRECTNESS OF SIZE / LOCATION  
OF FITTINGS, ACCESSORIES & COATINGS SHOWN ON THIS DRAWING.

## REVISIONS



# Highland Tank

U.S. Patent #4,722,800      Canadian Patent # 1,296,263

25000 GALLON OIL WATER SEPARATOR  
RECTANGULAR, HTC, SINGLE WALL

CUSTOMER:

PROJECT:

QUOTE NO:

CHK'D BY:

DWG. NO.:

UNLESS OTHERWISE SPECIFIED DIMENSIONS ARE IN INCHES  
TOLERANCES ARE + OR - 1'

SCALE:	DATE:
3/16"=1'-0"	1-17-14

DWG. BY:	
----------	--

DWG. NO.:  
25000RFC

GENERAL SPECIFICATIONS

NO. REQ'D: (1)

CAPACITY: 25000 GALLONS

TYPE: RECTANGULAR, HTC, ABOVEGROUND, SINGLE WALL

MATERIAL: MILD CARBON STEEL

GUAGE:

SHELL- 3/8"

HEADS- 3/8"

SURFACE PREP:

SSPC NO.10 BLAST ALL INTERIOR SURFACES

SSPC NO.6 BLAST ALL EXTERIOR SURFACES

COATING:

MATERIAL

THICKNESS

EXTERIOR-

CHEMPRIME 3001

(3-6 MILS)

CHEMLINE 3300

(2-3 MILS)

TOP COAT "WHITE"

INTERIOR-

CHEMLINE 4200 PW

(15 MILS)

CONSTRUCTION:

BUTT FIT & WELD ALL CORNERS IN & OUT

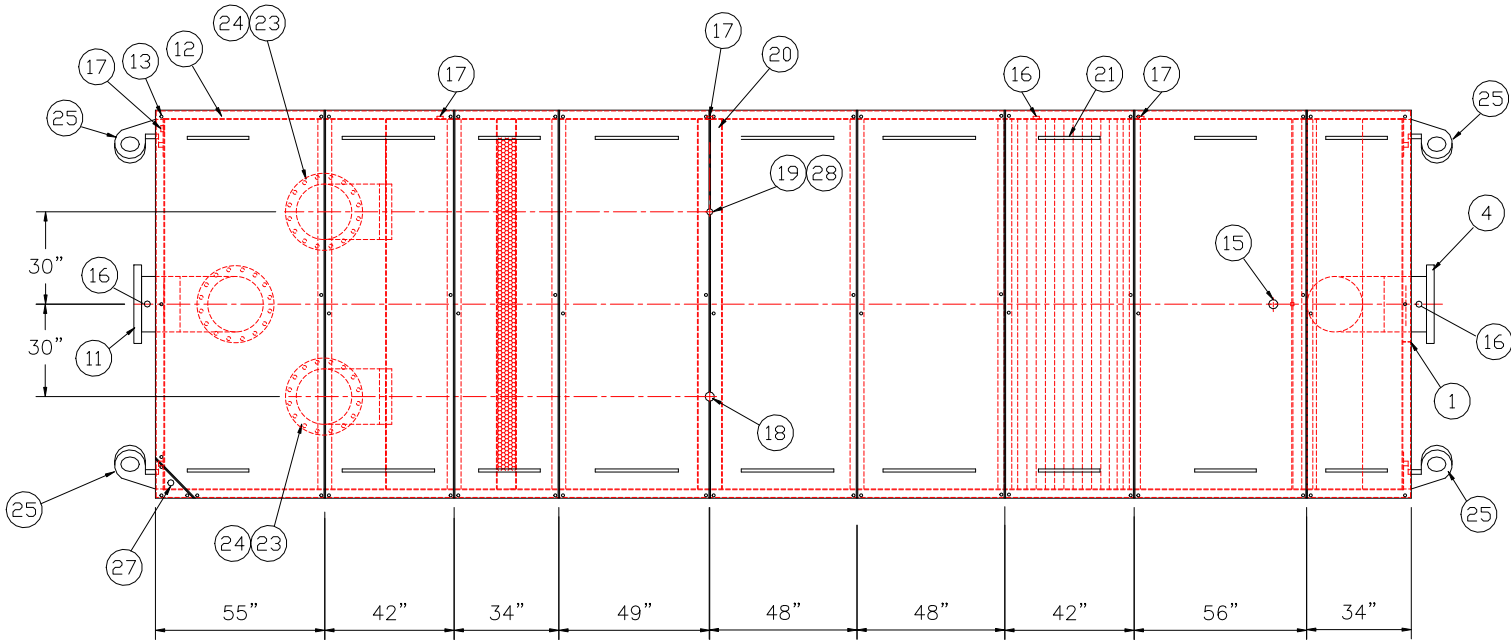
NOTES

1. ALL INTERNAL MATERIAL IS 10 GA

2. ALL THREADED DRAIN FITTINGS TO HAVE STEEL THREADED PLUGS AND COATED WITH TANK

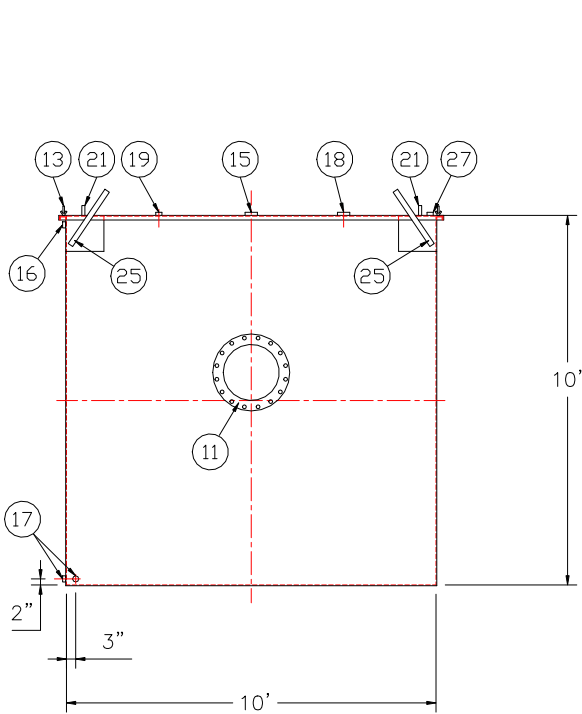
3. ALL OTHER THREADED FITTINGS TO HAVE PVC THREADED PLUGS

4. LIFTING LUGS HAVE REINFORCING PLATES

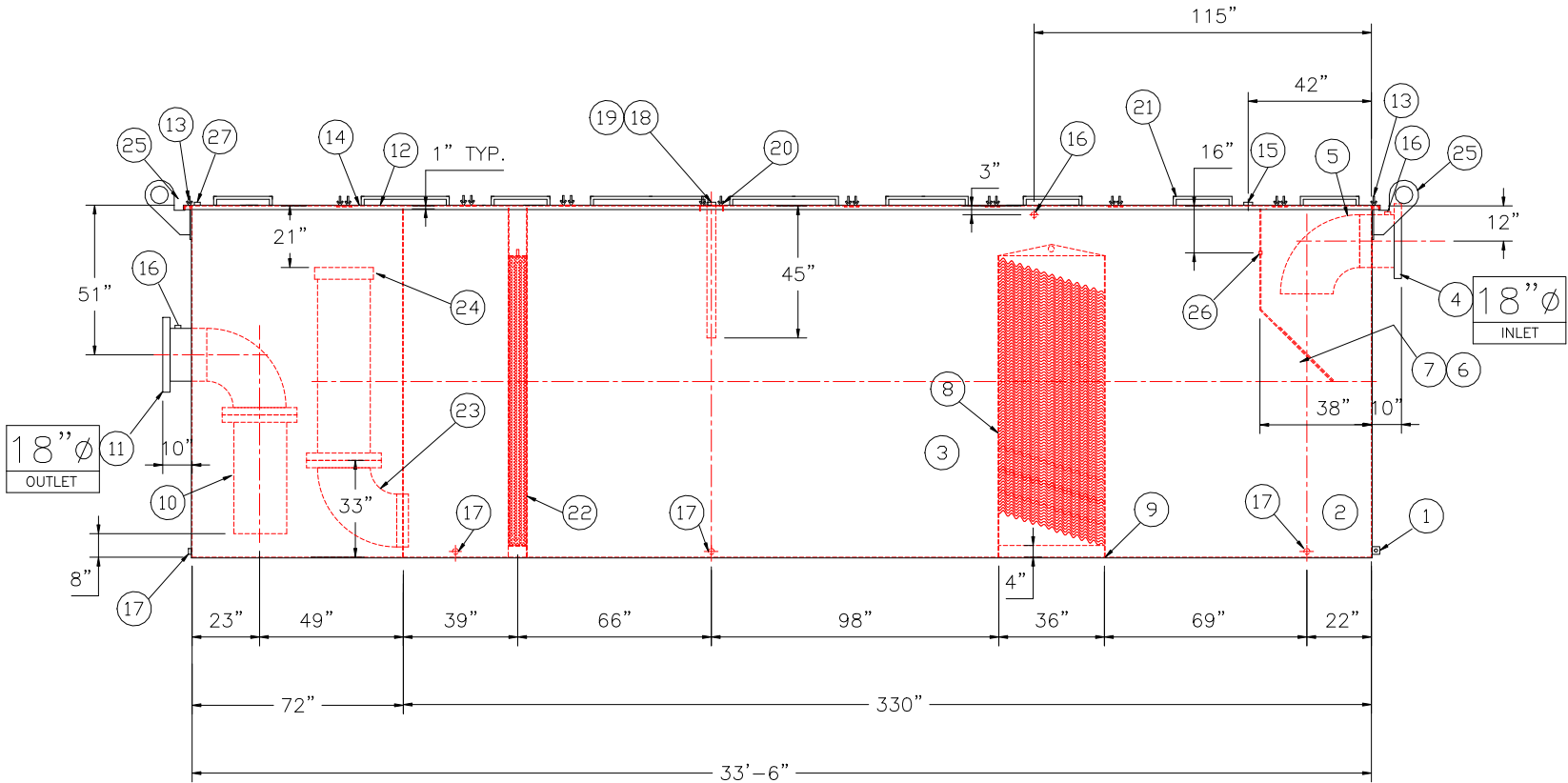


REMOVABLE COVERS (9) REQUIRED

PLAN VIEW



END VIEW



ELEVATION

- PROVIDED EQUIPMENT
1. 3"x3"x1/4" FLAT W/ 9/16"Ø HOLE DRILLED IN CENTER (GROUNDING LUG)

2. SEDIMENT CHAMBER

3. OIL WATER SEPARATOR CHAMBER

4. 150# RFSO FLANGED INLET

5. STEEL INLET ELBOW PIPING

6. VELOCITY HEAD DIFFUSION BAFFLE - 10GA

7. WEAR PLATE - 1/4"

8. REMOVABLE PARALLEL CORRUGATED PLATE COALESCER. CORELLA PVC PLATES (1" PLATE SPACING)

9. SLUDGE BAFFLE - 10GA

10. FLANGED PVC OUTLET DOWNCOMER PIPE

11. 150# RFSO FLANGED OUTLET W/ INTERNAL STEEL ELBOW AND FLANGE

12. (9) PIECE COVER W/ 5/8" BOLT HOLES - 7 GA

13. NUTS & BOLTS W/ LARGE WING NUTS-TYP. (CORROSION RESISTANT)

14. GASKET MATERIAL (FOR EACH REMOVABLE COVER)

15. 3"Ø FNPT (CLEAN-OUT)

16. 2"Ø FNPT (VENT)

17. 2"Ø FNPT HALF COUPLING (DRAIN) W/ STEEL PLUG

18. 3"Ø FNPT FULL COUPLING W/ 3" Ø INTERNAL PVC PIPE (OIL PUMPOUT)

19. 2"Ø FNPT HALF COUPLING (INTERFACE LEVEL SENSOR)

20. 7GA. CROSSMEMBER 9" WIDE FOR OIL PUMP-OUT AND LEVEL SENSOR FTGS.

21. HANDLES PER H.T. STANDARD

22. 6" THICK REMOVABLE PETROSCREEN CARTRIDGE COALESCER

23. 18"Ø STEEL ELBOW W/ FLANGE WELDED TO TOP FOR PVC RISER PIPES

24. 18"Ø ADJUSTABLE FERNCO COUPLING

25. 3/4 THICK LIFTING LUG ANGLED TOWARD CENTER

26. 1"Ø FNPT COUPLING W/ PLUG

27. 2"Ø FNPT HALF COUPLING (SPARE)

NOTE :  
ALL RIGHTS RESERVED. THIS DRAWING OR ANY PART THEREOF MUST NOT BE REPRODUCED IN ANY FORM WITHOUT THE WRITTEN PERMISSION OF HIGHLAND TANK.  
HIGHLAND TANK SHALL BE RESPONSIBLE ONLY FOR ITEMS INDICATED ON THIS FABRICATION DRAWING UNLESS OTHERWISE NOTED. CUSTOMER IS RESPONSIBLE FOR VERIFYING CORRECTNESS OF SIZE / LOCATION OF FITTINGS , ACCESSORIES & COATINGS SHOWN ON THIS DRAWING

UNLESS OTHERWISE SPECIFIED DIMENSIONS ARE IN INCHES  
TOLERANCES ARE + OR - 1"

REVISIONS

HIGHLAND TANK

MFG. CO.

U.S. Patent #4,722,800

Canadian Patent # 1,296,263

25000 GALLON OIL WATER SEPARATOR  
RECTANGULAR, HTC, SINGLE WALL

CUSTOMER:

PROJECT:

QUOTE NO:

CHK'D BY:

SCALE:

3/16"=1'-0"

DATE:

1-17-14

DWG. BY:

DWG. NO.:

25000RECSWHTC