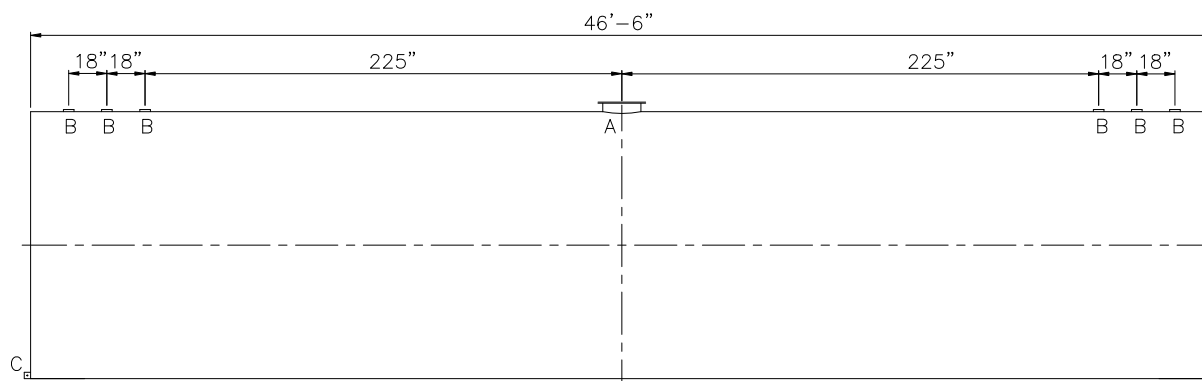



SHIPPING LUGS AS NEEDED



<u>DESIGN DATA</u>
CAPACITY – 30,000 GALLON
TYPE – SINGLE WALL
NO. REQ. – –
OPERATING PRESSURE – ATMOSPHERIC
SPECIFIC GRAVITY = 1.0
TANK MATERIAL – MILD CARBON STEEL
THICKNESS – HEADS: 5/16"
THICKNESS – SHELL: 1/4"
CONSTRUCTION – LAP WELD OUTSIDE ONLY –
TANK TEST – 5 PSIG –
INT. FINISH – NONE –
EXT. FINISH – SHOP PRIMER –
LABEL – UL 142

LEGEND	
A	18" LOOSE BOLT MANWAY [PRIMARY EMERGENCY VENT]
B	4" FITTING
C	FB-3"x 1/4"x3" WITH 5/8"Ø HOLE ON CL (GROUNDING LUG)
D	—
E	—
F	—

 <h1 data-bbox="1904 1149 2199 1214">Highland Tank</h1>	
UNLESS NOTED, TOLERANCES ARE $\pm .1"$	
30,000 GAL 126"Ø SW AG HORIZONTAL	
CUSTOMER:	
PROJECT:	
QUOTE NO:	CHK'D BY:
SCALE: 3/16"=1'-0"	DWG. NO. 30000AHSW126
DATE:	DWG. BY: