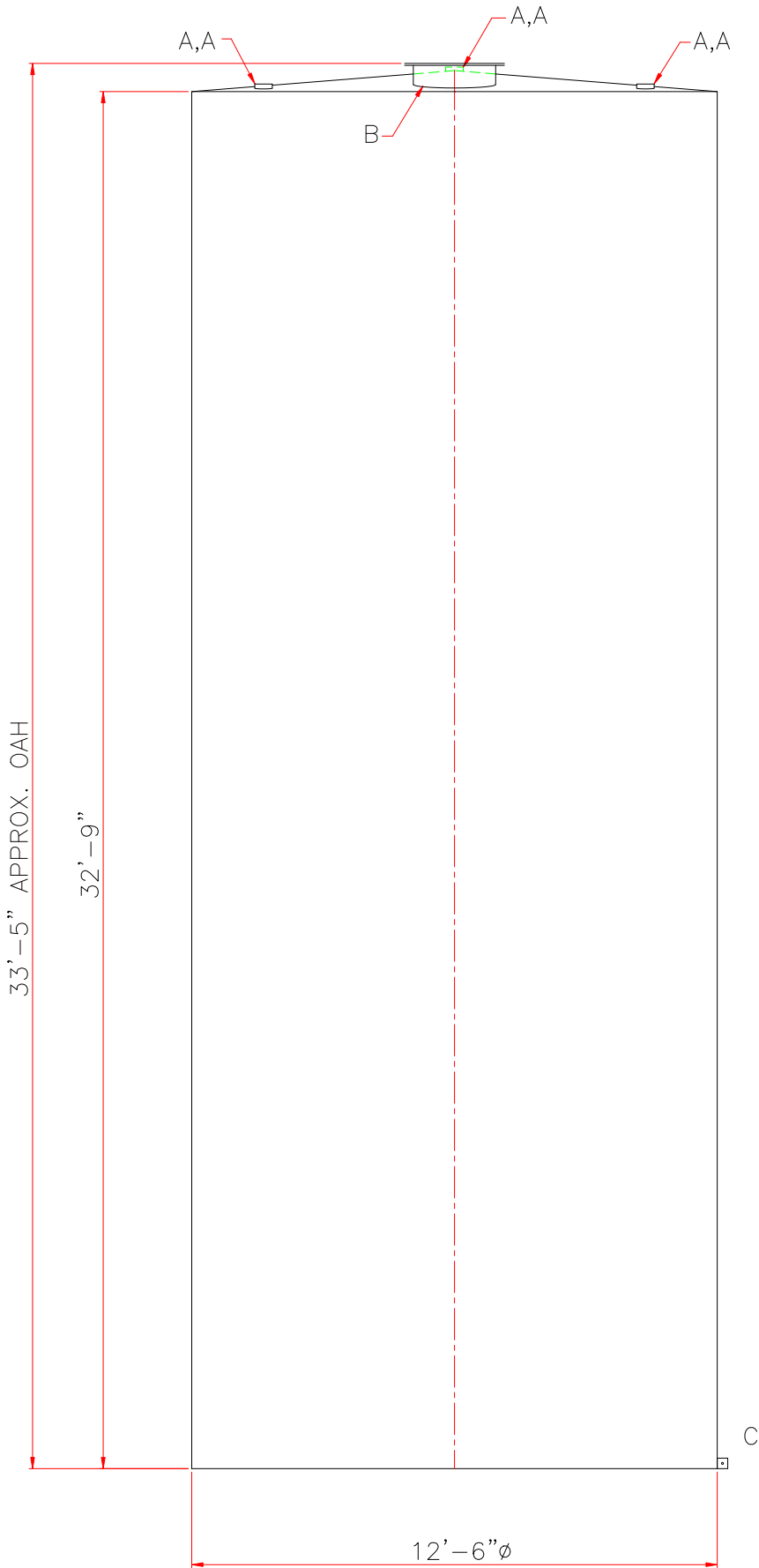
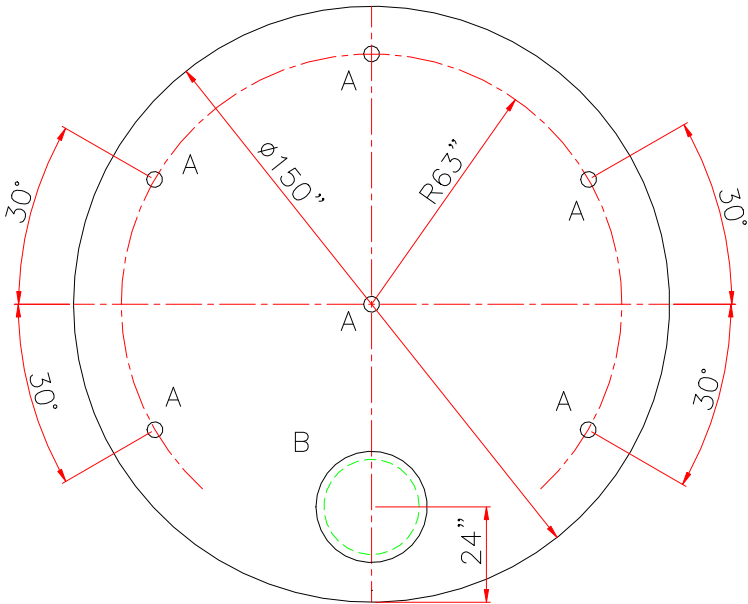


NOTE: ALL RIGHTS RESERVED. THIS DRAWING MUST NOT BE REPRODUCED IN ANY FORM WITHOUT THE WRITTEN PERMISSION OF HIGHLAND TANK®. HIGHLAND TANK® SHALL BE RESPONSIBLE ONLY FOR ITEMS INDICATED ON THIS FABRICATION DRAWING UNLESS OTHERWISE NOTED. CUSTOMER IS RESPONSIBLE FOR VERIFYING CORRECTNESS OF SIZE AND LOCATION OF FITTINGS, ACCESSORIES, AND COATINGS SHOWN ON THIS DRAWING.

TOUCH UP OF FINISHED PAINT IS REQUIRED BY INSTALLATION CONTRACTOR. TOUCH UP PAINT SHIPPED WITH TANK.

- NOTES
- SEE PLAN VIEW FOR TRUE ORIENTATION AND LOCATION OF FITTING
 - LIFTING LUGS FOR UNLOADING UNIT & STANDING UNIT UPRIGHT TO BE PLACED AS NEEDED BY FABRICATION SHOP
 - A 3x3x¼” STEEL GROUNDING LUG WITH A 5⁄8”Ø HOLE IN CENTER TO BE PLACED ON SHELL AT BOTTOM OF TANK IN LINE WITH LIFTING LUGS

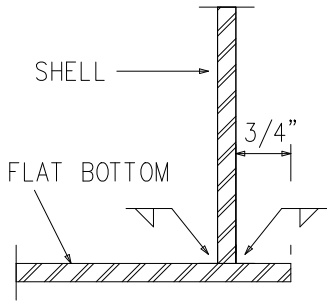


DESIGN DATA


CAPACITY – 30,000 GALLONS
TYPE – SINGLE WALL ABOVEGROUND VERTICAL
NO. REQ. – –
OPERATING PRESSURE – ATMOSPHERIC
SPECIFIC GRAVITY = 1.0
TANK MATERIAL – MILD CARBON STEEL
THICKNESS – SHALLOW CONED TOP HEAD 7GA. SHELL 1/4” FLAT BOTTOM HEAD 1/4”
CONSTRUCTION – LAP WELD ALL EXTERIOR SEAMS
TANK TEST – 2 PSIG –
INT. FINISH – NONE –
EXT. FINISH – SHOP PRIMER –
LABEL – U.L. 142

LEGEND

A	4” FITTING
B	24” LOOSEBOLT MANHOLE (EMERGENCY VENT)
C	GROUNDING LUG WITH 5/8” HOLE
D	–
E	–
F	



BOTTOM JOINT DETAIL

△	–		
<div><div></div><div>Highland Tank</div></div> <div>UNLESS NOTED, TOLERANCES ARE +/- 1"</div> <div>30,000 GAL 150”Ø SW VERTICAL TANK</div> <div>CUSTOMER:</div> <div>PROJECT:</div> <div>QUOTE NO:</div> <div>CHK'D BY:</div> <div>SCALE: 1/4"=1'-0"</div> <div>DATE:</div> <div>DWG. BY:</div> <div>DWG. NO: 30000AVSW150</div>			