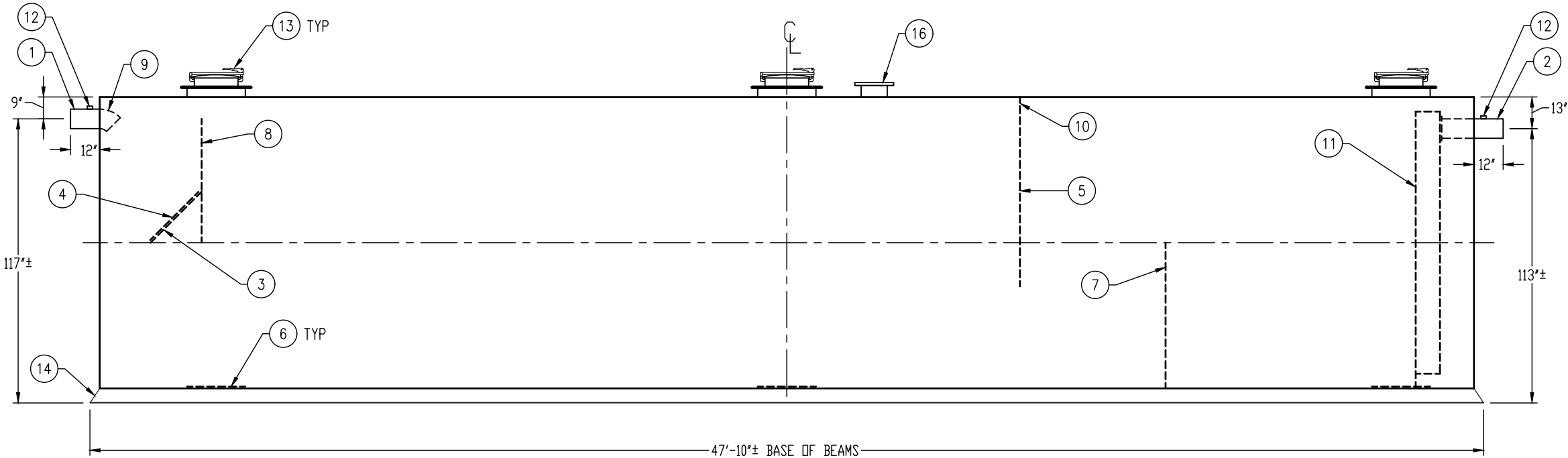
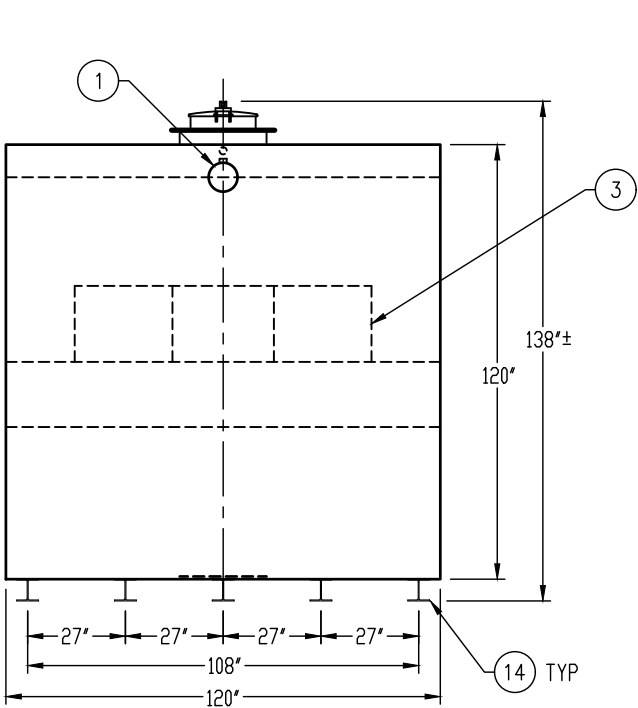
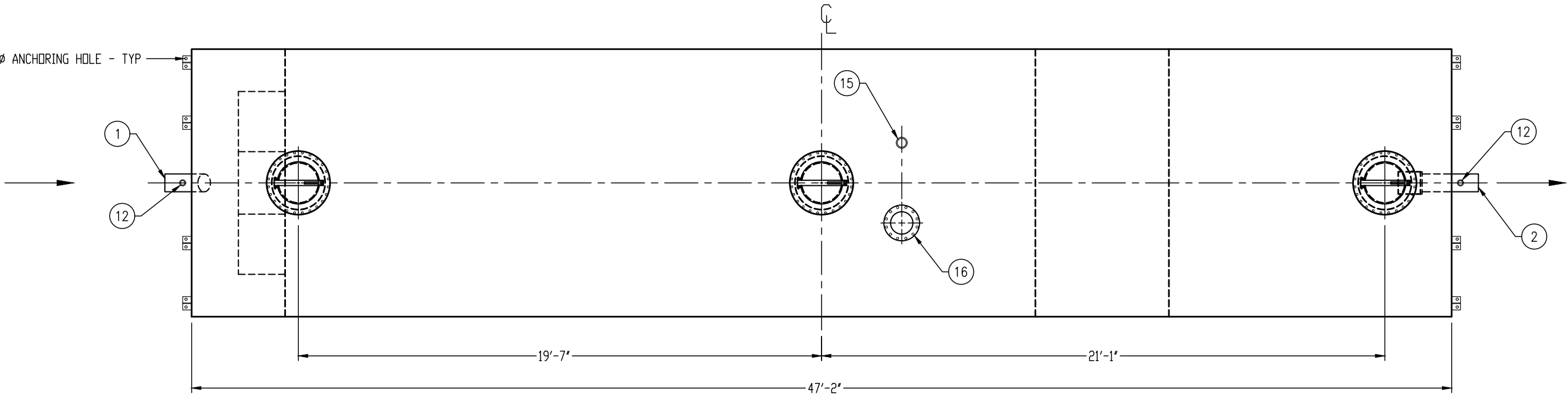


GENERAL SPECIFICATIONS

QUANTITY: ONE (1)  
MODEL: PGI-30000-2 AR  
CAPACITY: 30,000 GALLONS  
TYPE: SINGLE WALL, ABOVEGROUND  
MATERIAL: 1/4" CARBON STEEL  
LAP FIT AND WELD INTERIOR AND EXTERIOR SEAMS  
SURFACE PREP: SSPC-SP 10 BLAST INTERIOR SURFACES  
SSPC-SP 6 BLAST EXTERIOR SURFACES  
EXT. COATING: WHITE URETHANE - 3-5 MILS  
INT. COATING: CHEMTHANE 4200 PW (15 MILS DFT)  
OPERATING PRESSURE: ATMOSPHERIC  
GREASE HOLDING CAPACITY: 76,714 LBS



CUSTOMER APPROVAL

THE CUSTOMER HAS REVIEWED THIS  
DRAWING AND VERIFIED THE ACCURACY OF  
ALL INFORMATION AND DIMENSIONS.

SIGNED:

DATE:

NOTE:  
ALL RIGHTS RESERVED. THIS DRAWING, OR ANY PART THEREOF, MUST NOT  
BE REPRODUCED IN ANY FORM WITHOUT WRITTEN PERMISSION FROM  
HIGHLAND TANK UNLESS OTHERWISE NOTED. HIGHLAND TANK SHALL BE  
RESPONSIBLE ONLY FOR ITEMS INDICATED ON THIS FABRICATION DRAWING.  
THE CUSTOMER IS RESPONSIBLE FOR VERIFYING THE CORRECTNESS OF  
THE TYPE, SIZE, AND LOCATION OF ALL FITTINGS, ACCESSORIES, AND  
COATINGS SHOWN ON THIS DRAWING.

PROVIDED EQUIPMENT

- 8"Ø SCH 40 PIPE STUB - INLET
- 8"Ø SCH 40 PIPE STUB - OUTLET
- DIFFUSION PLATE - 1/4"
- 28" x 28" WEAR PLATE - 1/4"
- GREASE DAM - 1/4"
- STRIKER PLATE
- SLUDGE BAFFLE - 1/4"
- UNDERFLOW BAFFLE - 1/4"
- 8"Ø 45° DIFFUSION ELBOW
- 2"Ø OPENING FOR AIR CIRCULATION
- STEEL OUTLET DOWNCOMER BAFFLE WITH OPEN TOP

PROVIDED EQUIPMENT

- (CONTINUED)
- 2" HC - VENT
  - 24"Ø MANWAY WITH 18" EASY-ACCESS HATCH
  - (5) W6x15 BEAM RUNNER WITH (2) 1-1/8" HOLES AT EACH TAPERED END FOR ANCHORING
  - 4" HC - NORMAL TANK VENT
  - 10"Ø-150# FFSO FLANGE FOR EMERGENCY VENT



**Highland Tank®**

PASSIVE GREASE INTERCEPTOR  
30,000 GALLON DOUBLE-BASIN

CUSTOMER:

PROJECT:

QUOTE NO.:

SCALE:

DATE:

DWG. BY:

DWG. NO.:

ORDER:

DIMENSION TOLERANCE: ± 1"

NTS

3/9/20

MGS

PGI-30000-2 AR