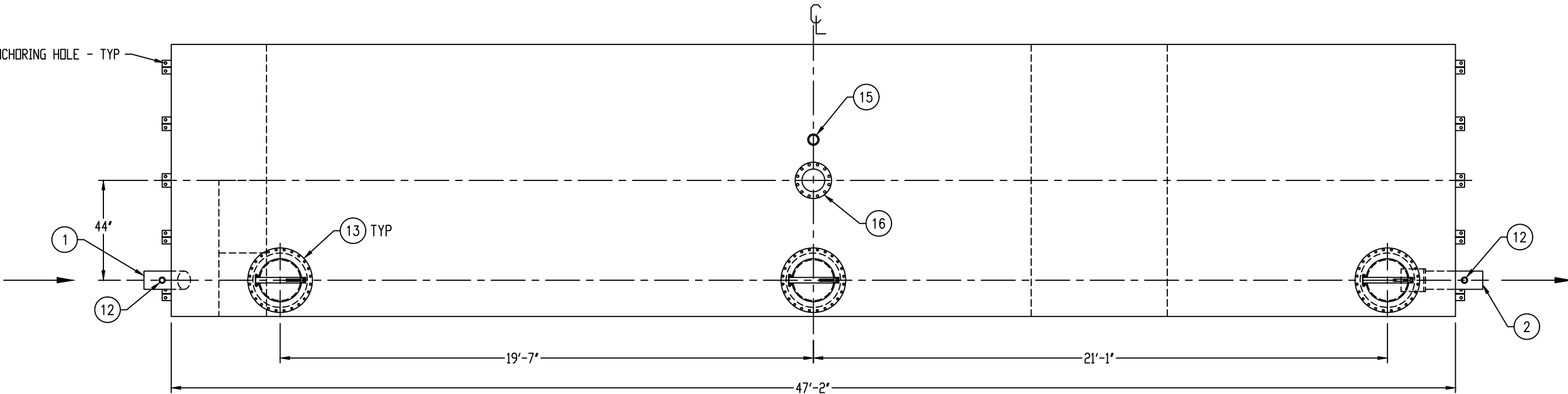


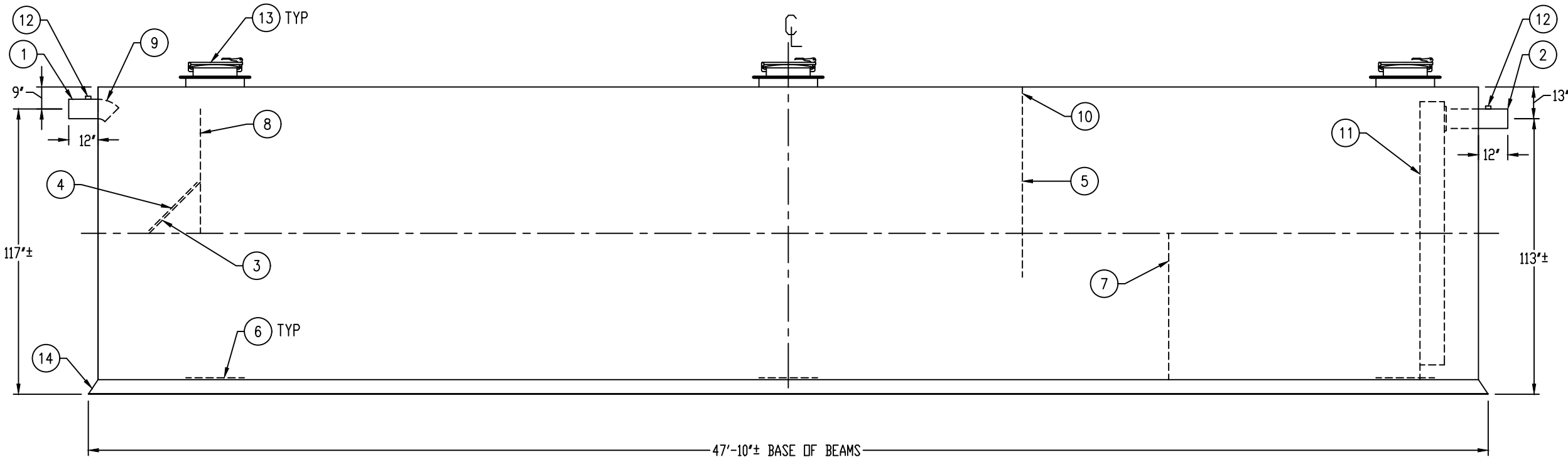
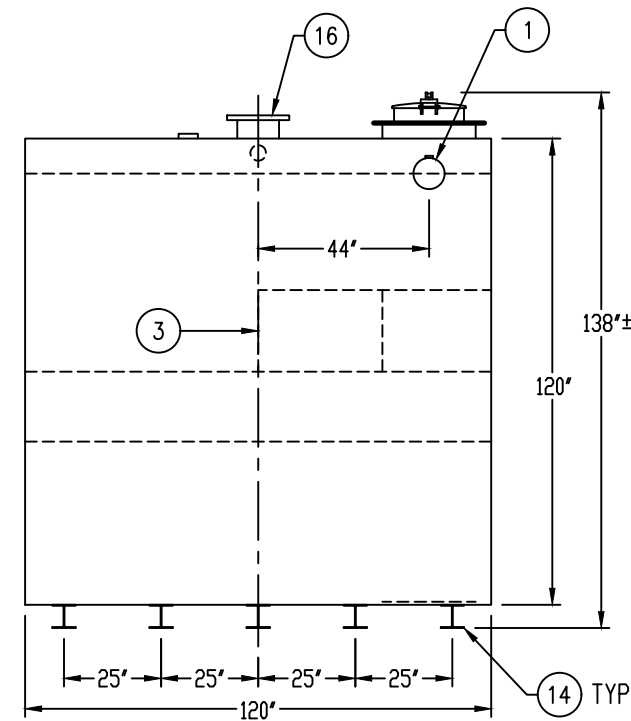
GENERAL SPECIFICATIONS

QUANTITY: ONE (1)
MODEL: PGI-30000-2 AR
CAPACITY: 30,000 GALLONS
TYPE: SINGLE WALL, ABOVEGROUND
MATERIAL: 3/8" CARBON STEEL
LAP FIT AND WELD INTERIOR AND EXTERIOR SEAMS
SURFACE PREP: SSPC-SP 10 BLAST INTERIOR SURFACES
SSPC-SP 6 BLAST EXTERIOR SURFACES
EXT. COATING: WHITE URETHANE - 3-5 MILS
INT. COATING: CHEMLINE 4200 PW (15 MILS DFT)
OPERATING PRESSURE: ATMOSPHERIC
GREASE HOLDING CAPACITY: 76,714 LBS

1-1/8"Ø ANCHORING HOLE - TYP



MANWAYS OFFSET FOR EASE OF ACCESS - FLOW DIRECTION CAN BE REVERSED



PROVIDED EQUIPMENT

- 8"Ø SCH 40 PIPE STUB - INLET
- 8"Ø SCH 40 PIPE STUB - OUTLET
- DIFFUSION PLATE - 3/8"
- 28" x 28" WEAR PLATE - 3/8"
- GREASE DAM - 3/8"
- STRIKER PLATE
- SLUDGE BAFFLE - 3/8"
- UNDERFLOW BAFFLE - 3/8"
- 8"Ø 45° DIFFUSION ELBOW
- 4"Ø OPENING FOR AIR CIRCULATION
- STEEL OUTLET DOWNCOMER BAFFLE WITH OPEN TOP


PROVIDED EQUIPMENT

- (CONTINUED)
- 2" HC - VENT
 - 24"Ø MANWAY WITH 18" EASY-ACCESS HATCH
 - (5) W6x15 BEAM RUNNER WITH (2) 1-1/8" HOLES AT EACH TAPERED END FOR ANCHORING
 - 4" HC - NORMAL TANK VENT
 - 10"Ø-150# FFSO FLANGE FOR EMERGENCY VENT

NOTE:
ALL RIGHTS RESERVED. THIS DRAWING, OR ANY PART THEREOF, MUST NOT BE REPRODUCED IN ANY FORM WITHOUT WRITTEN PERMISSION FROM HIGHLAND TANK. UNLESS OTHERWISE NOTED, HIGHLAND TANK SHALL BE RESPONSIBLE ONLY FOR ITEMS INDICATED ON THIS FABRICATION DRAWING. THE CUSTOMER IS RESPONSIBLE FOR VERIFYING THE CORRECTNESS OF THE TYPE, SIZE, AND LOCATION OF ALL FITTINGS, ACCESSORIES, AND COATINGS SHOWN ON THIS DRAWING.

THIS DRAWING IS SUBJECT TO CHANGE AT THE DISCRETION OF THE MANUFACTURER. CONTACT HIGHLAND TANK FOR THE MOST UP-TO-DATE INFORMATION AND DRAWINGS OF OUR PRODUCTS.

DIMENSION TOLERANCE: ± 1"



Highland Tank®

PASSIVE GREASE INTERCEPTOR

PGI-30000-2 AR

CUSTOMER:

PROJECT:

QUOTE NO.:

DATE:

DWG. BY:

DWG. NO.:

ORDER:

SCALE:

NTS

10/31/23

MGS

PGI-30000-2 AR