

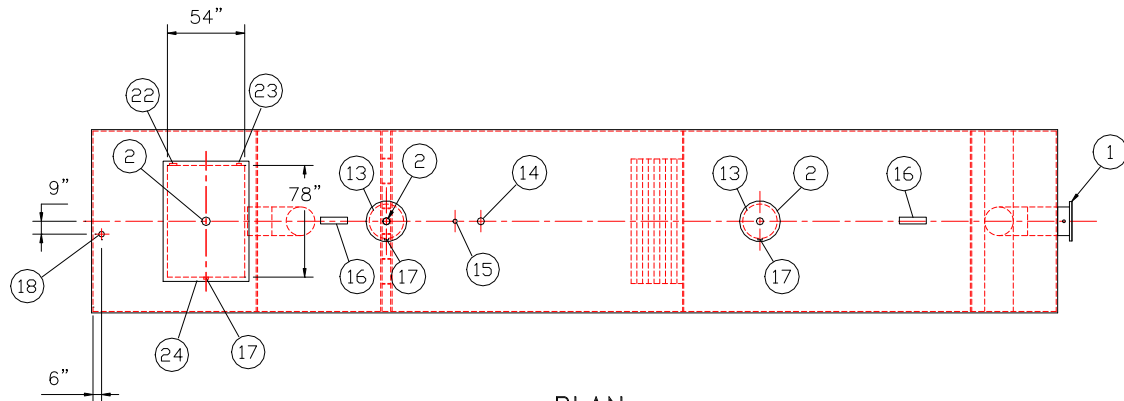
GENERAL SPECIFICATIONS

NO. REQ'D: (1)
CAPACITY: 30000 GALLONS
TYPE: HTC-J, HIGHGUARD, DW TYPE I 360
MATERIAL: MILD CARBON STEEL
FLOW RATE: 3000 GPM
GAUGE: BASED ON 60" MAX BURIAL
SHELL- INNER OUTER
HEADS- 3/8 10 GA. 3/8 1/4"

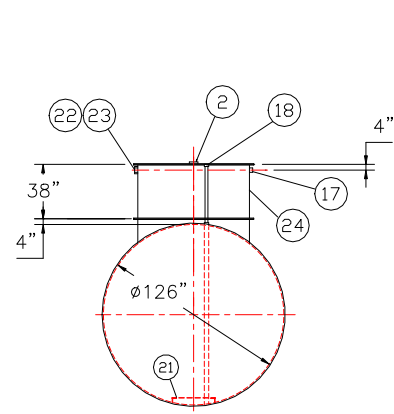
SURFACE PREP:
SSPC NO.6 BLAST ALL EXTERIOR SURFACES
SSPC NO.10 BLAST ALL INTERIOR OF WATER CHAMBER ONLY

COATING: MATERIAL THICKNESS
EXTERIOR- HIGHGUARD (75 MILS)
INTERIOR- POLYURETHANE (15 MILS)
INTERIOR OF WATER CHAMBER

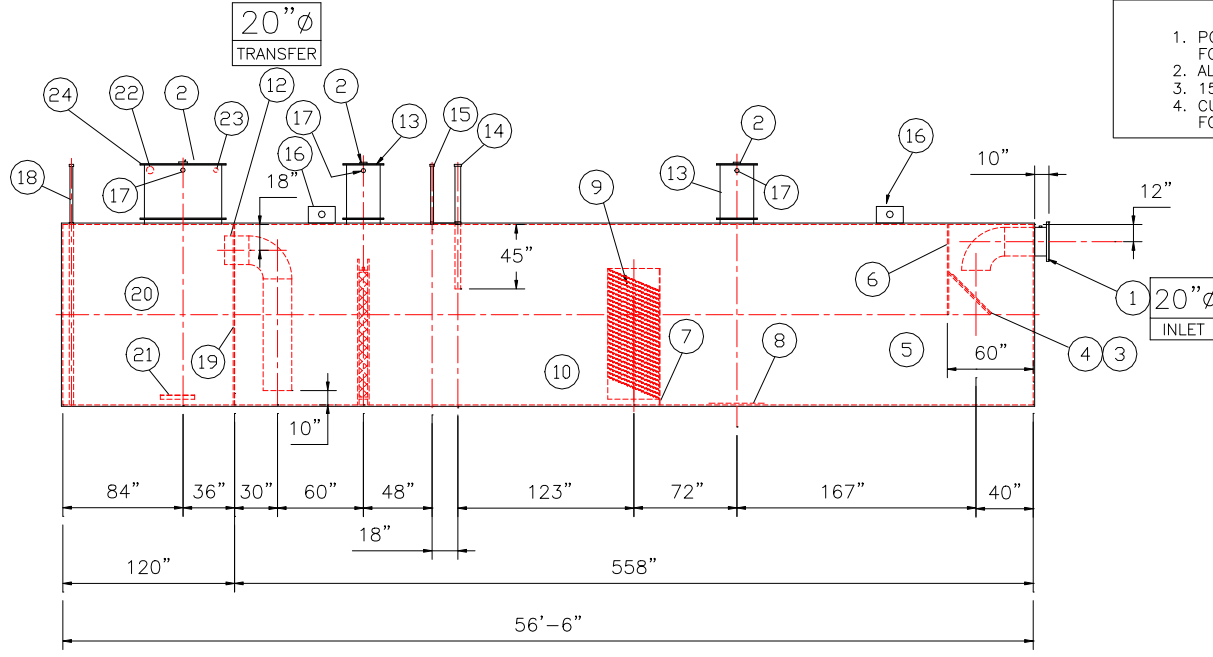
CONSTRUCTION :
LAP FIT & WELD ALL EXTERIOR SEAMS
OPERATING PRESSURE : ATMOSPHERIC



PLAN



END VIEW



ELEVATION

- PROVIDED EQUIPMENT
- 150# R.F.S.O. FLANGE W/ 2" FNPT FOR VENT
 - 4" FNPT FOR GAUGE WITH PLUG
 - VELOCITY HEAD DIFFUSION BAFFLE
 - WEAR PLATE
 - SEDIMENT CHAMBER
 - UNDERFLOW BAFFLE (REMOVABLE)
 - SLUDGE BAFFLE
 - STRIKER PLATES
 - PARALLEL CORRUGATED PLATE COALESCER. CORELLA PVC PLATES (3" PLATE SPACING)
 - OIL/WATER SEPARATOR CHAMBER
 - 6" THICK PETROSCREEN COALESCER MATERIAL INSTALLED W/ PULL ROD SHIPPED LOOSE
 - STEEL TRANSFER PIPE W/ DOWNCOMER
 - 24" MANWAY WITH NEO-CORK GASKETS. BOLT-ON EXTENSION SHIPPED LOOSE
 - 4" FNPT FOR OIL PUMP-OUT WITH INTERNAL PVC PIPE INSTALLED & RISER PIPE SHIPPED LOOSE
 - 2" FNPT FOR LEVEL SENSOR WITH RISER PIPE SHIPPED LOOSE
 - LIFTING LUG
 - 2" FNPT FOR VENT
 - 2" FNPT FOR LEAK SENSOR WITH RISER PIPE SHIPPED LOOSE
 - 1/4" BULKHEAD
 - EFFLUENT WATER CHAMBER
 - PUMP MOUNT
 - 4" FNPT FOR EFFLUENT PUMP CONDUIT AND WIRING
 - 2" FNPT FOR EFFLUENT LEVEL SENSOR CONDUIT AND WIRING
 - RECTANGULAR MANWAY WITH CLOSED CELL SPONGE GASKET. BOLT-ON EXTENSION SHIPPED LOOSE

- ANCILLARY PROVIDED EQUIPMENT
- 24" NEO-CORK MANWAY GASKETS
 - SETS OF NUTS/BOLTS/WASHERS FOR 24" MANWAY
 - 54"x78" CLOSED CELL FOAM MANWAY GASKET
 - 54"x78" RUBBER RIBBON MANWAY GASKET
 - SETS OF NUTS/BOLTS/WASHERS FOR 54"x78" MANWAY

- NOTES
- POLYURETHANE HIGHGUARD TANK IS NOT APPROVED FOR THE STORAGE OF HEATED PRODUCTS
 - ALL VENT PIPING BY INSTALLER
 - 15000 VOLT SPARK TEST PROVIDED AT FACTORY
 - CUSTOMER TO PROVIDE EFFLUENT PUMPING INFORMATION FOR PROPER PUMP SIZING & PUMPOUT DESIGN

NOTE :
ALL RIGHTS RESERVED. THIS DRAWING OR ANY PART THEREOF MUST NOT BE REPRODUCED IN ANY FORM WITHOUT THE WRITTEN PERMISSION OF HIGHLAND TANK.
HIGHLAND TANK SHALL BE RESPONSIBLE ONLY FOR ITEMS INDICATED ON THIS FABRICATION DRAWING UNLESS OTHERWISE NOTED. CUSTOMER IS RESPONSIBLE FOR VERIFYING CORRECTNESS OF SIZE / LOCATION OF FITTINGS , ACCESSORIES & COATINGS SHOWN ON THIS DRAWING

UNLESS OTHERWISE SPECIFIED DIMENSIONS ARE IN INCHES TOLERANCES ARE + OR - 1"

SCALE: 1/8"=1'-0" DATE: DWG. BY: DWG. NO.: 30000HGDWHTCJ

CHK'D BY:

REVISIONS



Highland Tank

U.S. Patent #4,722,800 Canadian Patent # 1,296,263

30000 GALLON OIL WATER SEPARATOR
HTC-J, HIGHGUARD, DW TYPE I 360

CUSTOMER:

PROJECT:

QUOTE NO:

CHK'D BY:

GENERAL SPECIFICATIONS

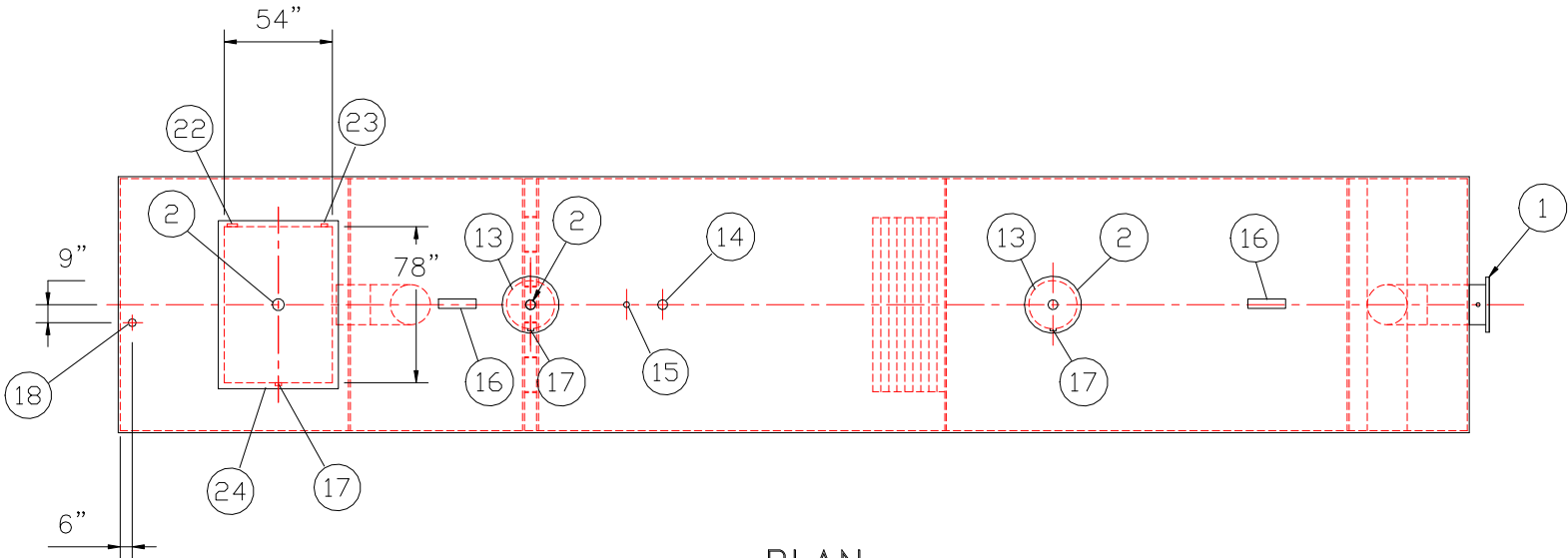
NO. REQ'D: (1)
CAPACITY: 30000 GALLONS
TYPE: HTC-J, HIGHGUARD, DW TYPE I 360
MATERIAL: MILD CARBON STEEL
FLOW RATE: 3000 GPM
GAUGE: BASED ON 60" MAX BURIAL

	INNER	OUTER
SHELL-	3/8	10 GA.
HEADS-	3/8"	1/4"

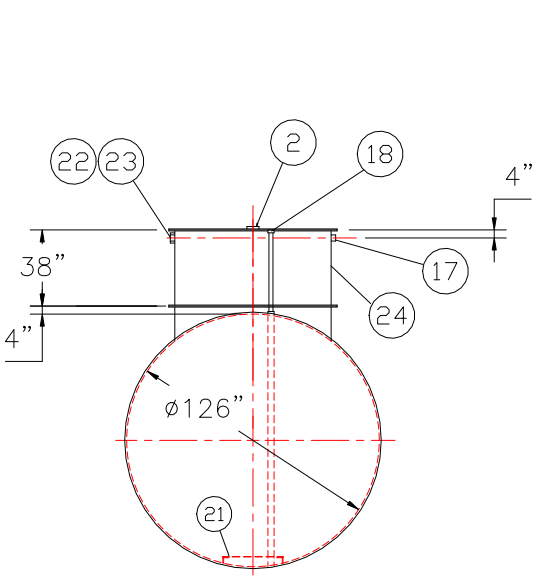
SURFACE PREP:
SSPC NO.6 BLAST ALL EXTERIOR SURFACES
SSPC NO.10 BLAST ALL INTERIOR OF WATER CHAMBER ONLY

COATING:	MATERIAL	THICKNESS
EXTERIOR-	HIGHGUARD	(75 MILS)
INTERIOR-	POLYURETHANE	(15 MILS)
	INTERIOR OF WATER CHAMBER	

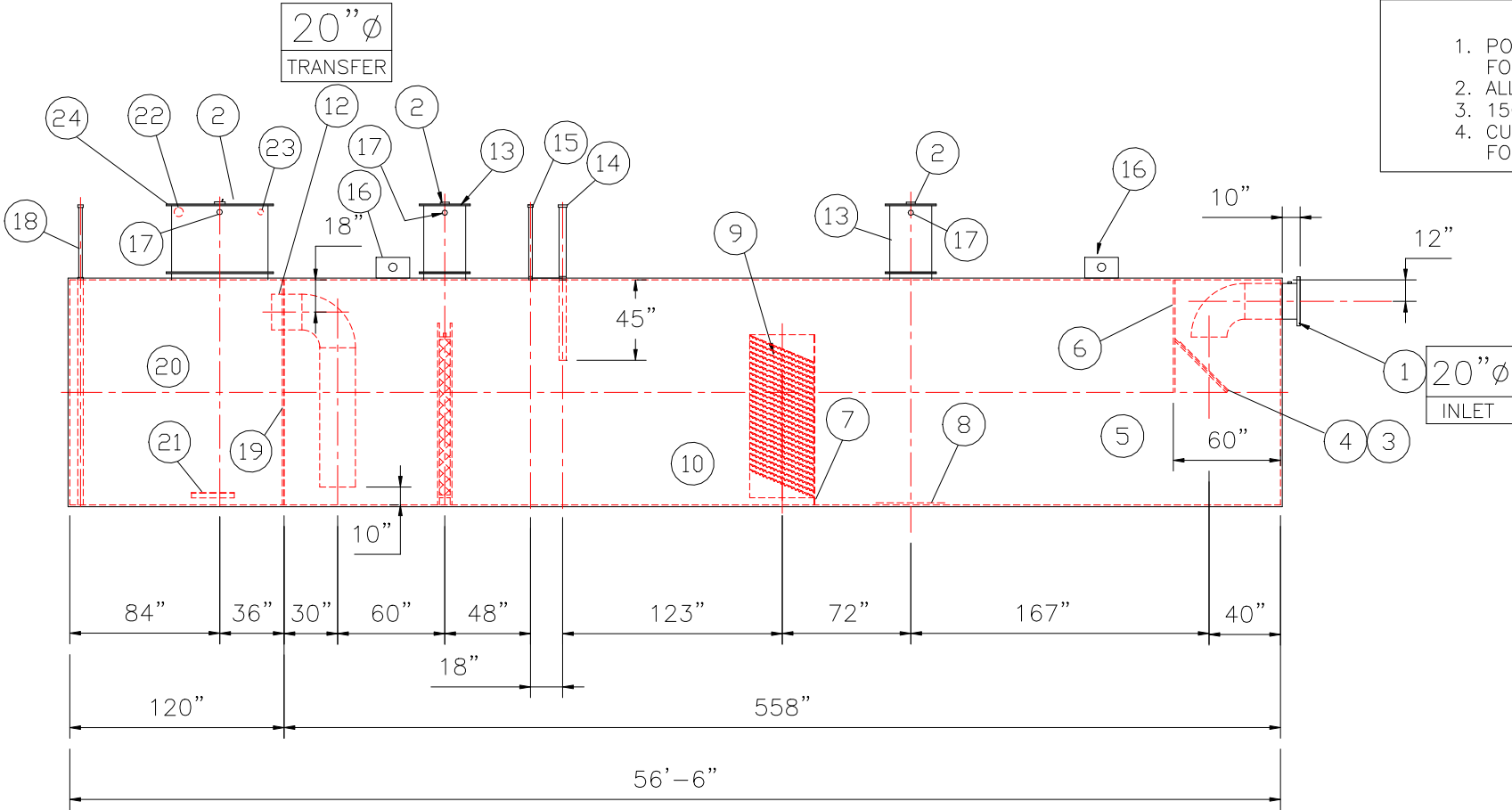
CONSTRUCTION :
LAP FIT & WELD ALL EXTERIOR SEAMS
OPERATING PRESSURE : ATMOSPHERIC



PLAN



END VIEW



ELEVATION

PROVIDED EQUIPMENT

- 150# R.F.S.O. FLANGE W/ 2" FNPT FOR VENT
- 4"Ø FNPT FOR GAUGE WITH PLUG
- VELOCITY HEAD DIFFUSION BAFFLE
- WEAR PLATE
- SEDIMENT CHAMBER
- UNDERFLOW BAFFLE (REMOVABLE)
- SLUDGE BAFFLE
- STRIKER PLATES
- PARALLEL CORRUGATED PLATE COALESCER. CORELLA PVC PLATES (3" PLATE SPACING)
- OIL/WATER SEPARATOR CHAMBER
- 6" THICK PETROSCREEN COALESCER MATERIAL INSTALLED W/ PULL ROD SHIPPED LOOSE
- STEEL TRANSFER PIPE W/ DOWNCOMER
- 24"Ø MANWAY WITH NEO-CORK GASKETS. BOLT-ON EXTENSION SHIPPED LOOSE
- 4"Ø FNPT FOR OIL PUMP-OUT WITH INTERNAL PVC PIPE INSTALLED & RISER PIPE SHIPPED LOOSE
- 2"Ø FNPT FOR LEVEL SENSOR WITH RISER PIPE SHIPPED LOOSE
- LIFTING LUG
- 2"Ø FNPT FOR VENT
- 2"Ø FNPT FOR LEAK SENSOR WITH RISER PIPE SHIPPED LOOSE
- 1/4" BULKHEAD
- EFFLUENT WATER CHAMBER
- PUMP MOUNT
- 4" FNPT FOR EFFLUENT PUMP CONDUIT AND WIRING
- 2" FNPT FOR EFFLUENT LEVEL SENSOR CONDUIT AND WIRING
- RECTANGULAR MANWAY WITH CLOSED CELL SPONGE GASKET. BOLT-ON EXTENSION SHIPPED LOOSE

ANCILLARY PROVIDED EQUIPMENT

- 24" NEO-CORK MANWAY GASKETS
- SETS OF NUTS/BOLTS/WASHERS FOR 24" MANWAY
- 54"x78" CLOSED CELL FOAM MANWAY GASKET
- 54"x78" RUBBER RIBBON MANWAY GASKET
- SETS OF NUTS/BOLTS/WASHERS FOR 54"x78" MANWAY

NOTES

- POLYURETHANE HIGHGUARD TANK IS NOT APPROVED FOR THE STORAGE OF HEATED PRODUCTS
- ALL VENT PIPING BY INSTALLER
- 15000 VOLT SPARK TEST PROVIDED AT FACTORY
- CUSTOMER TO PROVIDE EFFLUENT PUMPING INFORMATION FOR PROPER PUMP SIZING & PUMPOUT DESIGN

NOTE :
ALL RIGHTS RESERVED. THIS DRAWING OR ANY PART THEREOF MUST NOT BE REPRODUCED IN ANY FORM WITHOUT THE WRITTEN PERMISSION OF HIGHLAND TANK.
HIGHLAND TANK SHALL BE RESPONSIBLE ONLY FOR ITEMS INDICATED ON THIS FABRICATION DRAWING UNLESS OTHERWISE NOTED. CUSTOMER IS RESPONSIBLE FOR VERIFYING CORRECTNESS OF SIZE / LOCATION OF FITTINGS , ACCESSORIES & COATINGS SHOWN ON THIS DRAWING

UNLESS OTHERWISE SPECIFIED DIMENSIONS ARE IN INCHES
TOLERANCES ARE + OR - 1"

SCALE:
1/8"=1'-0"

DATE:

DWG. BY:

CHK'D BY:

QUOTE NO:

DWG. NO.:

30000HGDWHTCJ

REVISIONS



Highland Tank

U.S. Patent #4,722,800 Canadian Patent # 1,296,263

30000 GALLON OIL WATER SEPARATOR
HTC-J, HIGHGUARD, DW TYPE I 360

CUSTOMER:

PROJECT:

QUOTE NO: