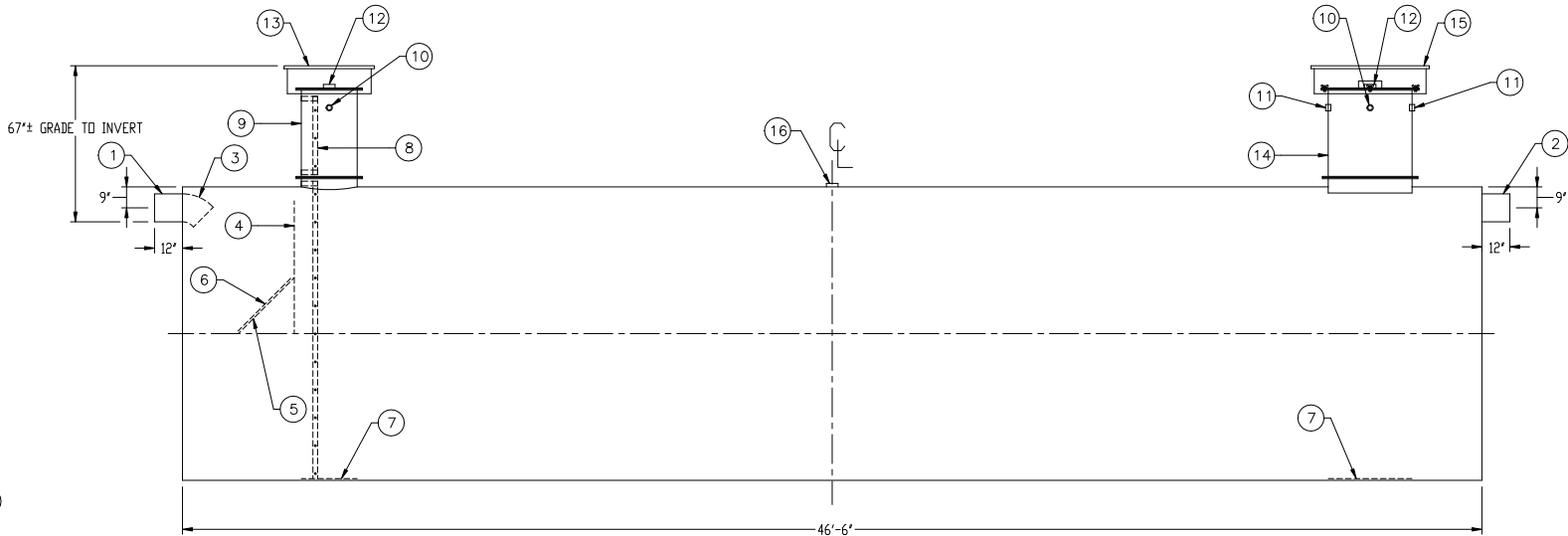
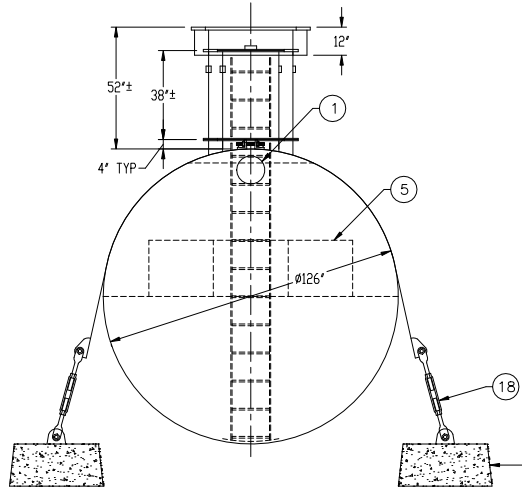
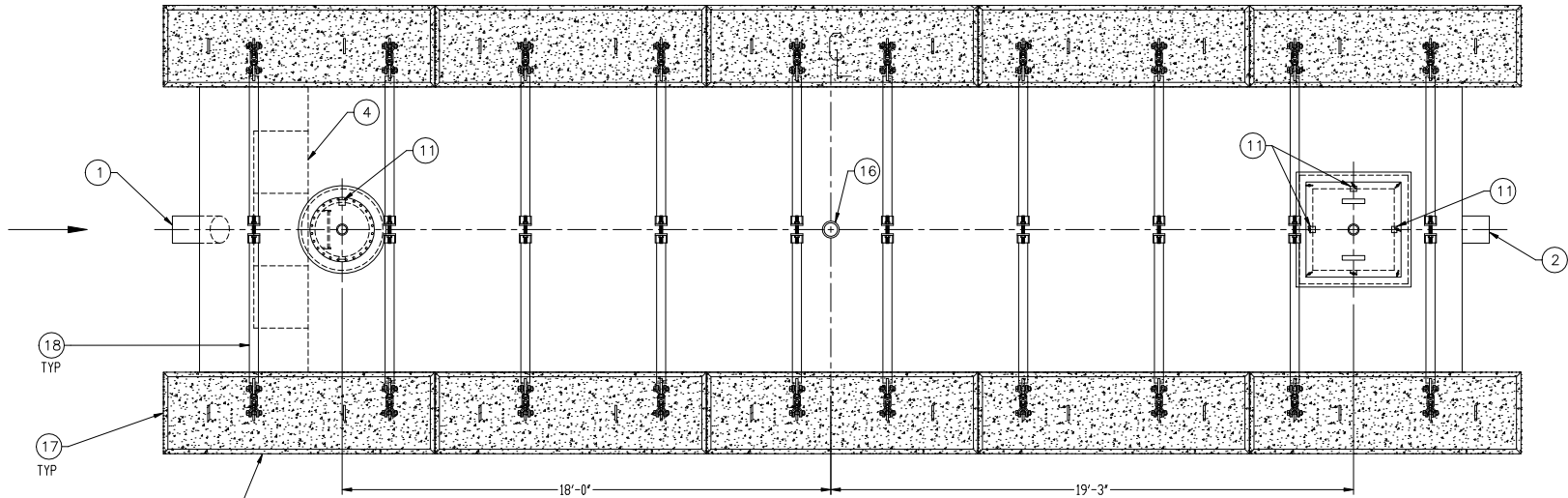


GENERAL SPECIFICATIONS

QUANTITY: ONE (1)
MODEL: RCT-30000-126
CAPACITY: 30,000 GALLONS
TYPE: SINGLE WALL, HIGHGUARD, UNDERGROUND
MATERIAL: 3/8" CARBON STEEL
GAUGE OF MATERIAL BASED ON 60" MAX. BURIAL DEPTH
LAP FIT AND WELD INTERIOR AND EXTERIOR SEAMS
TANK TEST: 3-5 PSI AIR TEST
SURFACE PREP: SSPC-SP 10 BLAST INTERIOR SURFACES
SSPC-SP 6 BLAST EXTERIOR SURFACES
COATING, EXTERIOR: HIGHGUARD POLYURETHANE - 75 MILS
COATING, INTERIOR:
HighDRO®- LINER PLUS POLYURETHANE - 15 MILS
OPERATING PRESSURE: ATMOSPHERIC




PROVIDED EQUIPMENT

1. 12"Ø SCH 40 PIPE STUB - INLET
2. 12"Ø SCH 40 PIPE STUB - OVERFLOW
3. 12"Ø 45° DIFFUSION ELBOW
4. UNDERFLOW BAFFLE - 3/8"
5. DIFFUSION PLATE - 3/8"
6. 32" x 32" WEAR PLATE - 1/4"
7. STRIKER PLATE
8. STAINLESS STEEL LADDER - 16" WIDE
9. 24"Ø MANWAY WITH BOLT-ON RISER
10. 2" HC - VENT
11. 2" FC FOR WIRING
12. 4" HC GAUGE FTG
13. 36"Ø GRADE-LEVEL MANWAY - SHIPPED LOOSE
14. 36" x 36" MANWAY WITH BOLT-ON EXTENSION

PROVIDED EQUIPMENT

- (CONTINUED)
15. 48" x 48" GRADE-LEVEL MANWAY - SHIPPED LOOSE
 16. 6" HC TANK VENT
 17. (10) CDA-45 CONCRETE DEADMAN
 18. (10) 10'-6" STEEL SAFETY DEADMAN HOLD-DOWN STRAPS WITH TURNBUCKLES AND LINERS

**Highland Tank®**

HighDRO®-PURE RAINWATER HARVESTING SYSTEM
30,000 GALLON CISTERN TANK

CUSTOMER:

PROJECT:

QUOTE NO:

SCALE: DATE: DWG. BY: DWG. NO:

NTS 1/24/17 MGS RCT-30000-126

ORDER#:

DIMENSION TOLERANCE: ± 1"

THIS DRAWING IS SUBJECT TO CHANGE AT THE DISCRETION OF THE MANUFACTURER. CONTACT HIGHLAND TANK FOR THE MOST UP-TO-DATE INFORMATION AND DRAWINGS OF OUR PRODUCTS.