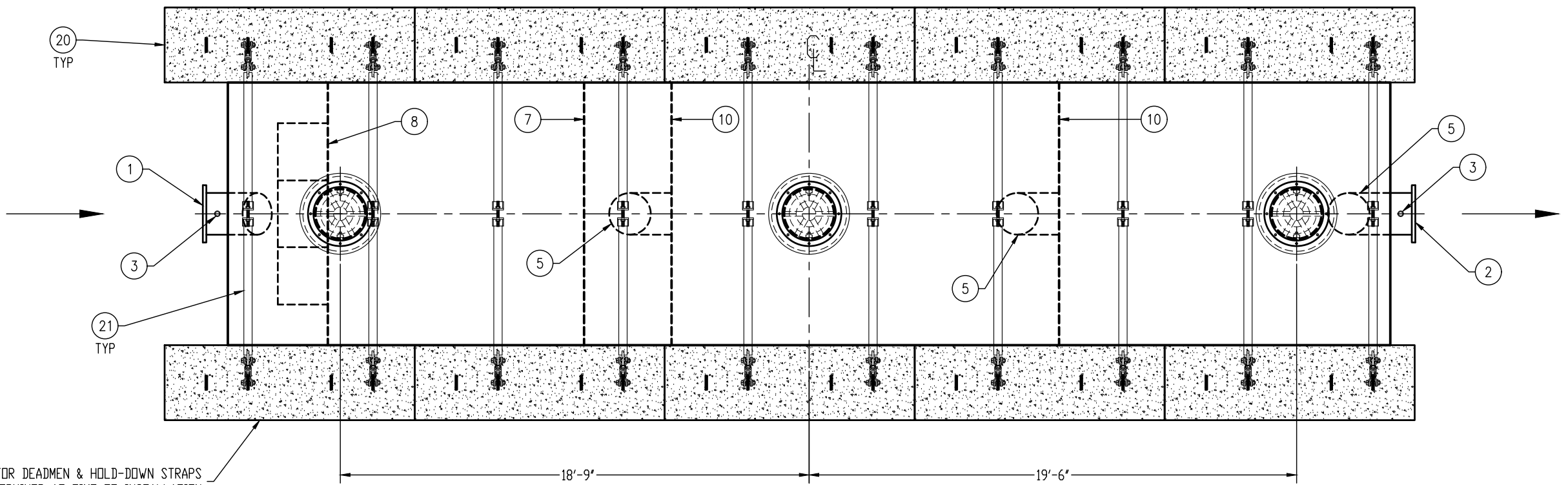


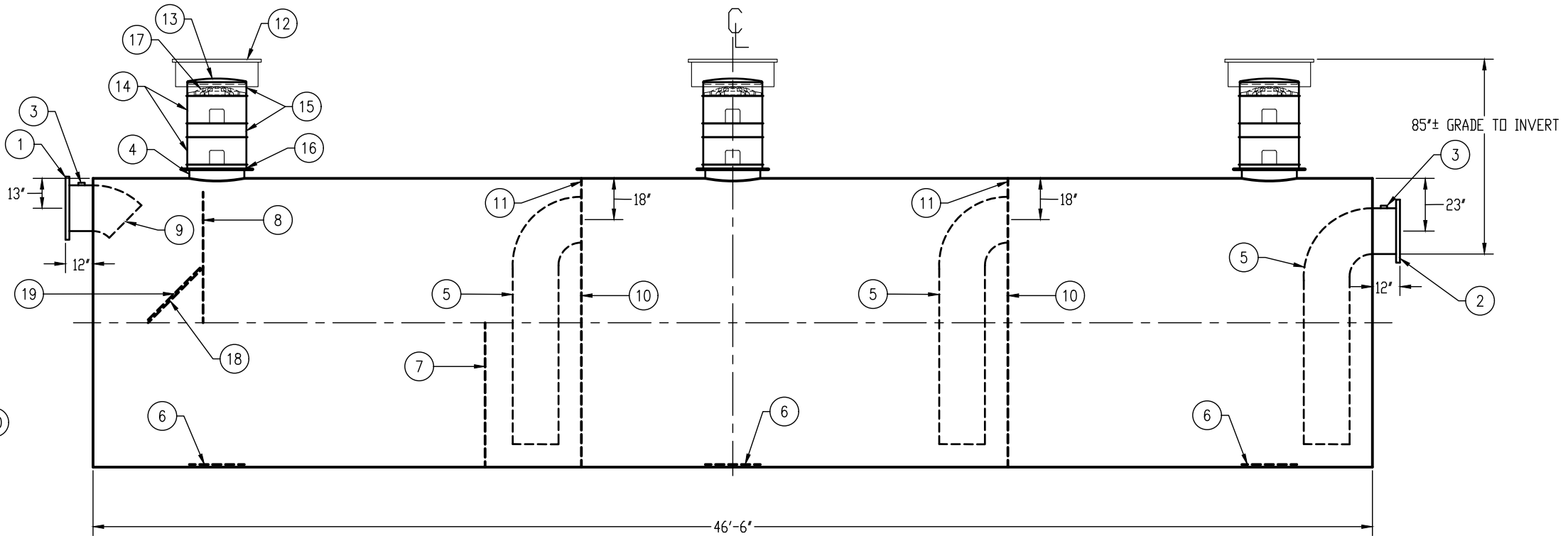
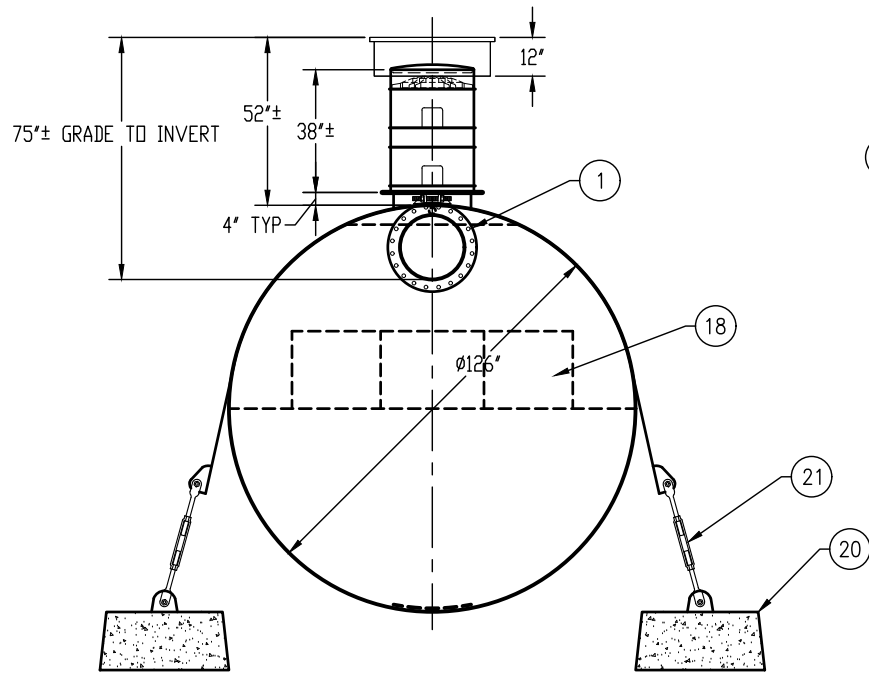
GENERAL SPECIFICATIONS

QUANTITY: ONE (1)
MODEL: OSI-30000-3
CAPACITY: 30,000 GALLONS
TYPE: SINGLE WALL, HIGHGUARD, UNDERGROUND
MATERIAL: 7/16" CARBON STEEL
MATERIAL BASED ON 60" MAXIMUM BURIAL DEPTH
LAP FIT AND WELD INTERIOR AND EXTERIOR SEAMS
TANK TEST: 3-5 PSI AIR TEST
SURFACE PREP: SSPC-SP 10 BLAST INTERIOR SURFACES
SSPC-SP 6 BLAST EXTERIOR SURFACES
EXT. COATING: HIGHGUARD POLYURETHANE - 75 MILS
INT. COATING: CHEMTHANE 4200 PW (15 MILS DFT)
OPERATING PRESSURE: ATMOSPHERIC

NOTE: OPTIONAL 2" VENTS ON MANWAY RISERS AT THE DISCRETION OF THE OWNER



APPROXIMATE LOCATIONS SHOWN FOR DEADMEN & HOLD-DOWN STRAPS
ACTUAL LOCATIONS TO BE DETERMINED AT TIME OF INSTALLATION



CUSTOMER APPROVAL

THE CUSTOMER HAS REVIEWED THIS
DRAWING AND VERIFIED THE ACCURACY OF
ALL INFORMATION AND DIMENSIONS.

SIGNED: _____

DATE: _____

NOTE:
ALL RIGHTS RESERVED. THIS DRAWING, OR ANY PART THEREOF, MUST NOT
BE REPRODUCED IN ANY FORM WITHOUT WRITTEN PERMISSION FROM
HIGHLAND TANK. UNLESS OTHERWISE NOTED, HIGHLAND TANK SHALL BE
RESPONSIBLE ONLY FOR ITEMS INDICATED ON THIS FABRICATION DRAWING.
THE CUSTOMER IS RESPONSIBLE FOR VERIFYING THE CORRECTNESS OF
THE TYPE, SIZE, AND LOCATION OF ALL FITTINGS, ACCESSORIES, AND
COATINGS SHOWN ON THIS DRAWING.

PROVIDED EQUIPMENT

- 20"Ø-150# RFSO FLANGE - INLET
- 20"Ø-150# RFSO FLANGE - OUTLET
- 2" HC - VENT
- 24"Ø MANWAY FOR STACKABLE RISER
- 20"Ø SCH 40 TRANSFER PIPE
- STRIKER PLATE
- SLUDGE BAFFLE - 7/16"
- UNDERFLOW BAFFLE - 7/16"
- 20"Ø 45° DIFFUSION ELBOW
- FULL BULKHEAD - 7/16"
- 2" OPENING FOR AIR CIRCULATION
- 36"Ø GRADE-LEVEL MANWAY - SHIPPED LOOSE
- 24"Ø PVC COVER

PROVIDED EQUIPMENT

- (CONTINUED)
- (2) 24"Ø x 12" STACKABLE RISER - ALL STACKABLE
RISER COMPONENTS ARE PRE-ASSEMBLED AND
COMPLETE MANWAY RISER IS SHIPPED LOOSE
 - (2) 24"Ø x 6" STACKABLE RISER
 - STACKABLE RISER ADAPTER RING & GASKET
 - STACKABLE RISER SAFETY SCREEN
 - DIFFUSION BAFFLE - 1/4"
 - 32" x 32" WEAR PLATE - 1/4"
 - (10) CDA-45 CONCRETE DEADMAN
 - (10) 10'-6" STEEL SAFETY DEADMAN HOLD-DOWN
STRAPS WITH TURNBUCKLES AND LINERS



Highland Tank®

OIL/SAND INTERCEPTOR
30,000 GALLON TRIPLE-BASIN

CUSTOMER: _____

PROJECT: _____

QUOTE NO.: _____

SCALE: _____

DATE: 2/15/18

DWG. BY: MGS

DWG. NO.: _____

ORDER: _____

DIMENSION TOLERANCE: ± 1"

NTS

2/15/18

MGS

OSI-30000-3