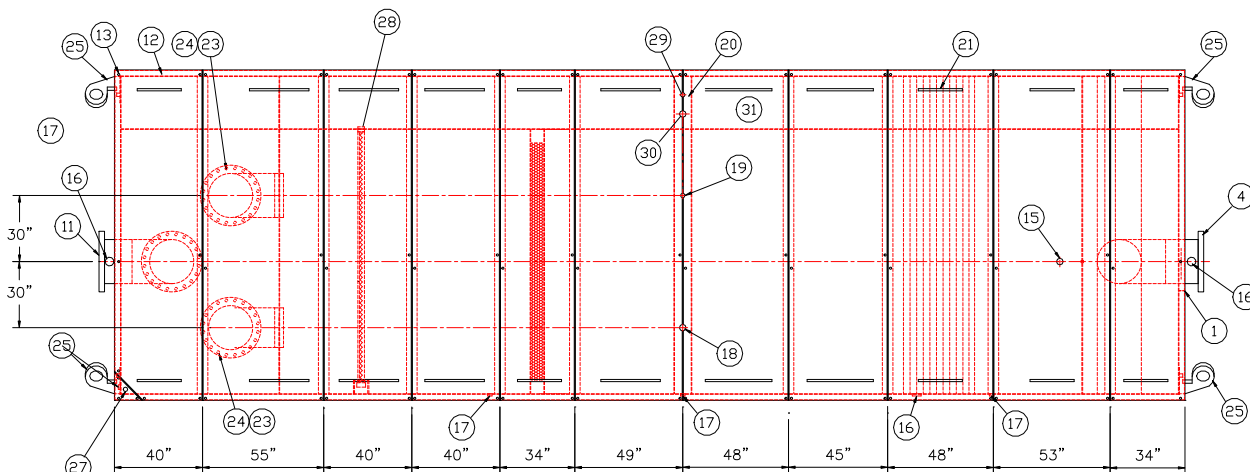


NO. REQ'D: (1)  
CAPACITY: 30000 GALLONS  
TYPE: RECTANGULAR, HTC-S, ABOVEGROUND, SINGLEWALL  
MATERIAL: MILD CARBON STEEL  
FLOW RATE: 3000 GPM  
GAUGE:  
SHELL- 3/8"  
HEADS- 3/8"  
SURFACE PREP:  
SSPC NO.10 BLAST ALL INTERIOR SURFACES  
SSPC NO.6 BLAST ALL EXTERIOR SURFACES

COATING:	MATERIAL	THICKNESS
EXTERIOR-	CHEMPRIME 3001	(3-6 MILS)
	CHEMLINE 3300 TOP COAT "WHITE"	(2-3 MILS)
INTERIOR-	CHEMLINE 4200 PW	(15 MILS)

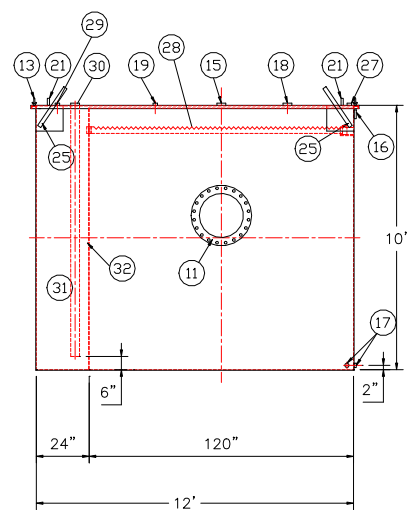
1. ALL INTERNAL MATERIAL IS 10 GA
2. ALL THREADED DRAIN FITTINGS TO HAVE STEEL THREADED PLUGS AND COATED WITH TANK
3. ALL OTHER THREADED FITTINGS TO HAVE PVC THREADED PLUGS
4. LIFTING LUGS HAVE REINFORCING PLATES



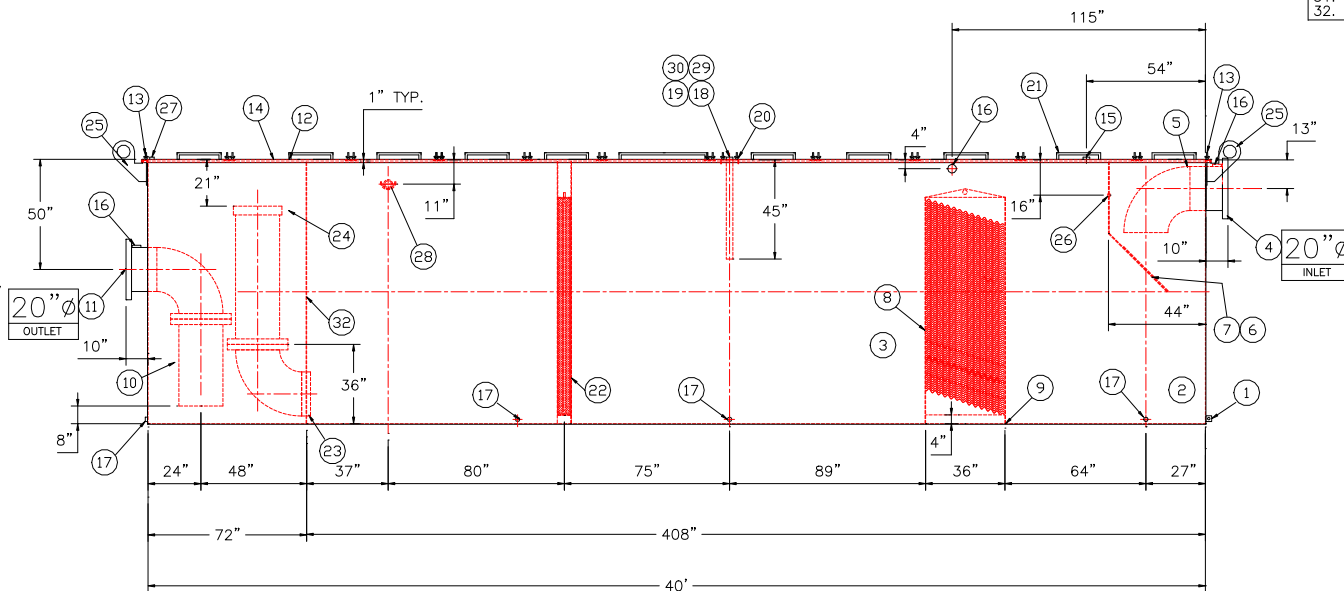
REMOVABLE COVERS (11) REQUIRED

PLAN VIEW

- ## PROVIDED EQUIPMENT
1. 3"x3"x1/4" FLAT W/ 9/16"ø HOLE DRILLED IN CENTER (GROUNDING LUG)
  2. SEDIMENT CHAMBER
  3. OIL WATER SEPARATOR CHAMBER
  4. FNPT 150" R.F.S.O. FLANGED INLET
  5. STEEL INLET ELBOW PIPING
  6. VELOCITY HEAD DIFFUSION BAFFLE - 10GA
  7. WEAR PLATE - 1/4"
  8. REMOVABLE PARALLEL CORRUGATED PLATE COALESCEER (CORELLA PVC PLATES) 1" PLATE SPACING
  9. SLUDGE BAFFLE - 10GA
  10. FLANGED PVC OUTLET DOWNCOMER PIPE
  11. 150" R.F.S.O. FLANGED OUTLET W/ INTERNAL STEEL ELBOW AND FLANGE
  12. (11) PIECE COVER W/ 5/8" BOLT HOLES - 7 GA NUTS & BOLTS W/ LARGE WING NUTS-TYP. (CORROSION RESISTANT)
  13. GASKET MATERIAL (FOR EACH REMOVABLE COVER)
  15. 3"ø FNPT (CLEAN-OUT)
  16. 4"ø FNPT (VENT)
  17. 2"ø FNPT HALF COUPLING (DRAIN) W/ STEEL PLUG
  18. 3"ø FNPT FULL COUPLING W/ 3" ø INTERNAL PVC PIPE (OIL PUMPOUT)
  19. 2"ø FNPT HALF COUPLING (INTERFACE LEVEL SENSOR)
  20. 7GA. CROSSMEMBER 9" WIDE FOR OIL PUMP-OUT AND LEVEL SENSOR FTG.
  21. HANDLES PER H.T. STANDARD
  22. 6" THICK REMOVABLE PETROSCREEN CARTRIDGE COALESCEER
  23. 20" STEEL ELBOW W/ FLANGE WELDED TO TOP FOR PVC RISER PIPES
  24. 20"ø ADJUSTABLE FERNCO COUPLING
  25. 3/4" THICK LIFTING LUG ANGLED TOWARD CENTER
  26. 1"ø FNPT COUPLING W/ PLUG
  27. 2"ø FNPT HALF COUPLING (SPARE)
  28. 3" FNPT COUPLING WITH SAWTOOTH TYPE PVC OIL SKIMMER AND PIPE SUPPORT SHELF
  29. 2"ø FNPT HALF COUPLING (LEVEL SENSOR IN OIL HOLDING CHAMBER
  30. 3"ø FNPT FULL COUPLING WITH 3" INTERNAL PVC PIPE (OIL PUMP OUT IN OIL HOLDING CHAMBER)
  31. OIL HOLDING COMPARTMENT
  32. INTERNAL BULKHEAD



END VIEW



ELEVATION

## REVISIONS



# Highland Tank

U.S. Patent #4,722,800      Canadian Patent # 1,296,263

30000 GALLON OIL WATER SEPARATOR  
RECTANGULAR, HTC-S, SINGLE WALL

CUSTOMER:

PROJECT:

QUOTE NO:

CHK'D BY:

DWG. NO.:

DWG. NO.:  
30000RECSWHTCS

UNLESS OTHERWISE SPECIFIED DIMENSIONS ARE IN INCHES  
TOLERANCES ARE + OR - 1"

SCALE:	DATE:
3/16"=1'-0"	1-17-14

4	DWG. BY:
---	----------

DWG. NO.: 000REFCS

NOTE :  
ALL RIGHTS RESERVED. THIS DRAWING OR ANY PART THEREOF MUST  
NOT BE REPRODUCED IN ANY FORM WITHOUT THE WRITTEN PERMISSION  
OF HIGHLAND TANK  
HIGHLAND TANK SHALL BE RESPONSIBLE ONLY FOR ITEMS INDICATED  
ON THIS FABRICATION DRAWING UNLESS OTHERWISE NOTED. CUSTOMER  
IS RESPONSIBLE FOR VERIFYING CORRECTNESS OF SIZE / LOCATION  
OF FITTINGS , ACCESSORIES & COATINGS SHOWN ON THIS DRAWING

GENERAL SPECIFICATIONS

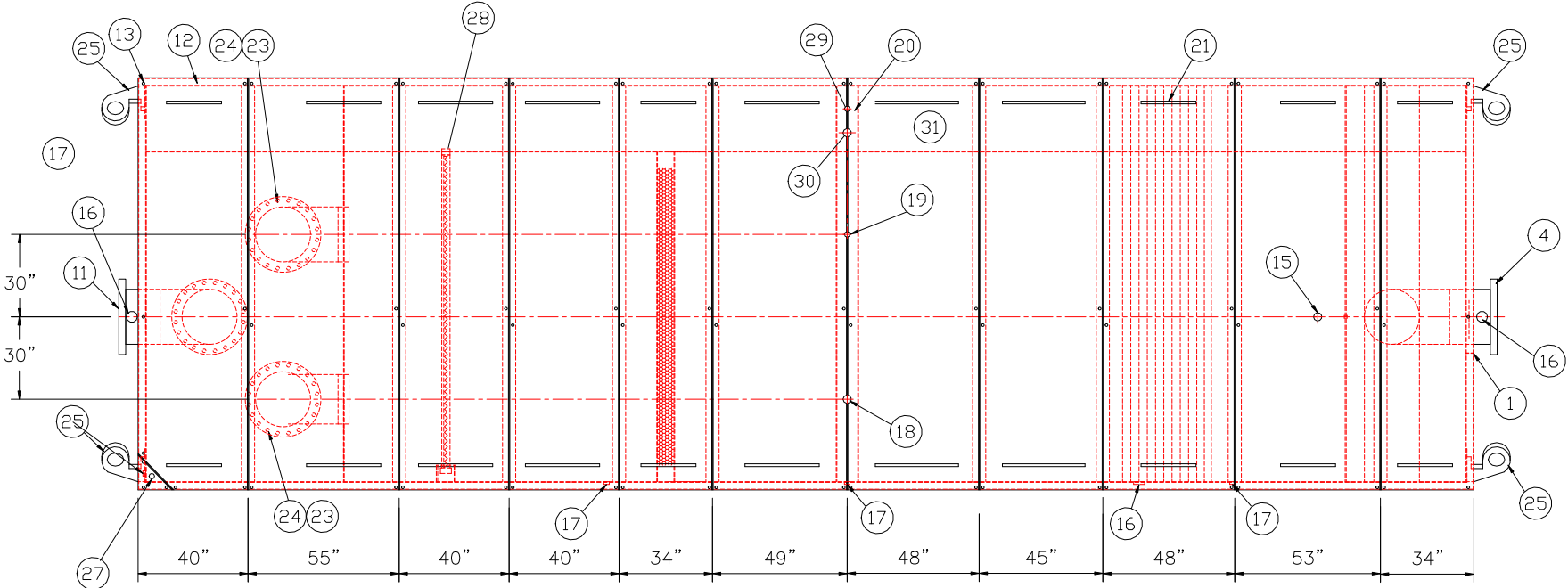
NO. REQ'D: (1)  
CAPACITY: 30000 GALLONS  
TYPE: RECTANGULAR, HTC-S, ABOVEGROUND, SINGLEWALL  
MATERIAL: MILD CARBON STEEL  
FLOW RATE: 3000 GPM  
GAUGE:  
SHELL- 3/8"  
HEADS- 3/8"  
SURFACE PREP:  
SSPC NO.10 BLAST ALL INTERIOR SURFACES  
SSPC NO.6 BLAST ALL EXTERIOR SURFACES  
COATING: MATERIAL THICKNESS  
EXTERIOR- CHEMPRIME 3001 (3-6 MILS)  
CHEMLINE 3300 (2-3 MILS)  
TOP COAT "WHITE"  
INTERIOR- CHEMLINE 4200 PW (15 MILS)  
CONSTRUCTION:  
BUTT FIT & WELD ALL CORNERS IN & OUT

NOTES

- 1. ALL INTERNAL MATERIAL IS 10 GA
- 2. ALL THREADED DRAIN FITTINGS TO HAVE STEEL THREADED PLUGS AND COATED WITH TANK
- 3. ALL OTHER THREADED FITTINGS TO HAVE PVC THREADED PLUGS
- 4. LIFTING LUGS HAVE REINFORCING PLATES

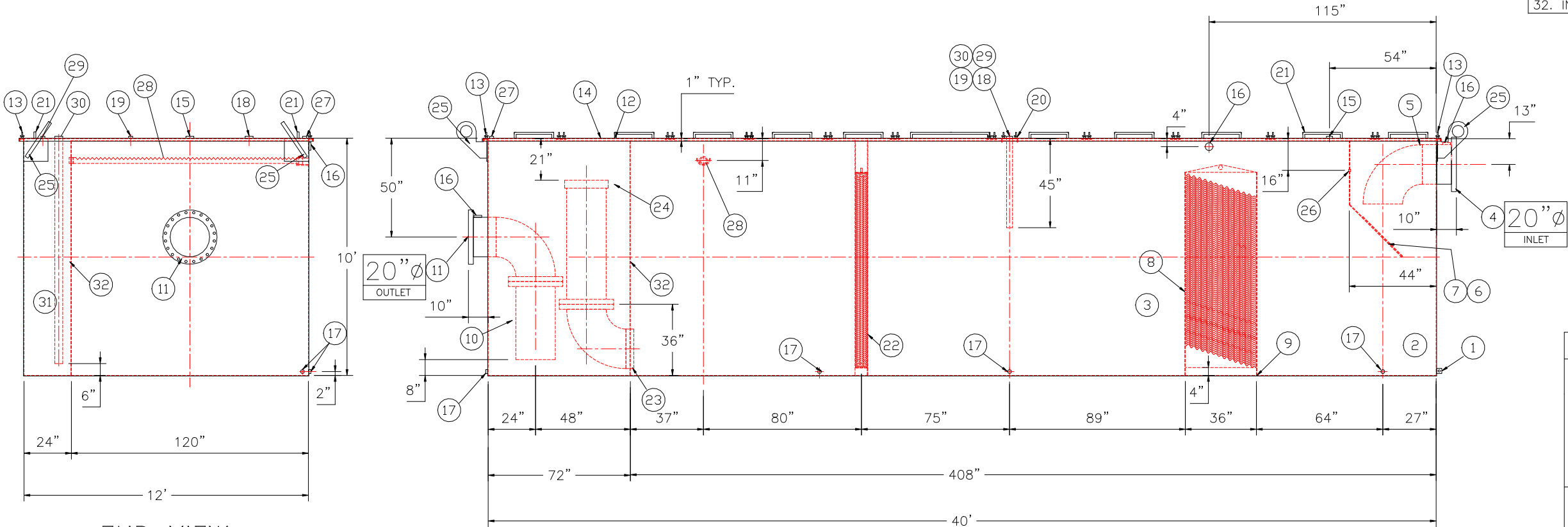
PROVIDED EQUIPMENT

- 1. 3"x3"x1/4" FLAT W/ 9/16"Ø HOLE DRILLED IN CENTER (GROUNDING LUG)
- 2. SEDIMENT CHAMBER
- 3. OIL WATER SEPARATOR CHAMBER
- 4. FNPT 150# R.F.S.O. FLANGED INLET
- 5. STEEL INLET ELBOW PIPING
- 6. VELOCITY HEAD DIFFUSION BAFFLE - 10GA
- 7. WEAR PLATE - 1/4"
- 8. REMOVABLE PARALLEL CORRUGATED PLATE COALESCER (CORELLA PVC PLATES) 1" PLATE SPACING
- 9. SLUDGE BAFFLE - 10GA
- 10. FLANGED PVC OUTLET DOWNCOMER PIPE
- 11. 150# R.F.S.O. FLANGED OUTLET W/ INTERNAL STEEL ELBOW AND FLANGE
- 12. (11) PIECE COVER W/ 5/8" BOLT HOLES - 7 GA
- 13. NUTS & BOLTS W/ LARGE WING NUTS-TYP. (CORROSION RESISTANT)
- 14. GASKET MATERIAL (FOR EACH REMOVABLE COVER)
- 15. 3"Ø FNPT (CLEAN-OUT)
- 16. 4"Ø FNPT (VENT)
- 17. 2"Ø FNPT HALF COUPLING (DRAIN) W/ STEEL PLUG
- 18. 3"Ø FNPT FULL COUPLING W/ 3" Ø INTERNAL PVC PIPE (OIL PUMPOUT)
- 19. 2"Ø FNPT HALF COUPLING (INTERFACE LEVEL SENSOR)
- 20. 7GA. CROSSMEMBER 9" WIDE FOR OIL PUMP-OUT AND LEVEL SENSOR FTG.
- 21. HANDLES PER H.T. STANDARD
- 22. 6" THICK REMOVABLE PETROSCREEN CARTRIDGE COALESCER
- 23. 20"Ø STEEL ELBOW W/ FLANGE WELDED TO TOP FOR PVC RISER PIPES
- 24. 20"Ø ADJUSTABLE FERNCO COUPLING
- 25. 3/4" THICK LIFTING LUG ANGLED TOWARD CENTER
- 26. 1"Ø FNPT COUPLING W/ PLUG
- 27. 2"Ø FNPT HALF COUPLING (SPARE)
- 28. 3" FNPT COUPLING WITH SAWTOOTH TYPE PVC OIL SKIMMER AND PIPE SUPPORT SHELF
- 29. 2"Ø FNPT HALF COUPLING (LEVEL SENSOR IN OIL HOLDING CHAMBER)
- 30. 3"Ø FNPT FULL COUPLING WITH 3" INTERNAL PVC PIPE (OIL PUMP OUT IN OIL HOLDING CHAMBER)
- 31. OIL HOLDING COMPARTMENT
- 32. INTERNAL BULKHEAD



REMOVABLE COVERS (11) REQUIRED

PLAN VIEW




END VIEW

ELEVATION

NOTE :  
ALL RIGHTS RESERVED. THIS DRAWING OR ANY PART THEREOF MUST NOT BE REPRODUCED IN ANY FORM WITHOUT THE WRITTEN PERMISSION OF HIGHLAND TANK.  
HIGHLAND TANK SHALL BE RESPONSIBLE ONLY FOR ITEMS INDICATED ON THIS FABRICATION DRAWING UNLESS OTHERWISE NOTED. CUSTOMER IS RESPONSIBLE FOR VERIFYING CORRECTNESS OF SIZE / LOCATION OF FITTINGS , ACCESSORIES & COATINGS SHOWN ON THIS DRAWING

UNLESS OTHERWISE SPECIFIED DIMENSIONS ARE IN INCHES  
TOLERANCES ARE + OR - 1"

REVISIONS			
 <b>Highland Tank</b> U.S. Patent #4,722,800 Canadian Patent # 1,296,263			
30000 GALLON OIL WATER SEPARATOR RECTANGULAR, HTC-S, SINGLE WALL			
CUSTOMER:			
PROJECT:			
QUOTE NO:		CHK'D BY:	
SCALE: 3/16"=1'-0"	DATE: 1-17-14	DWG. BY:	DWG. NO.: 30000RECSWHTCS