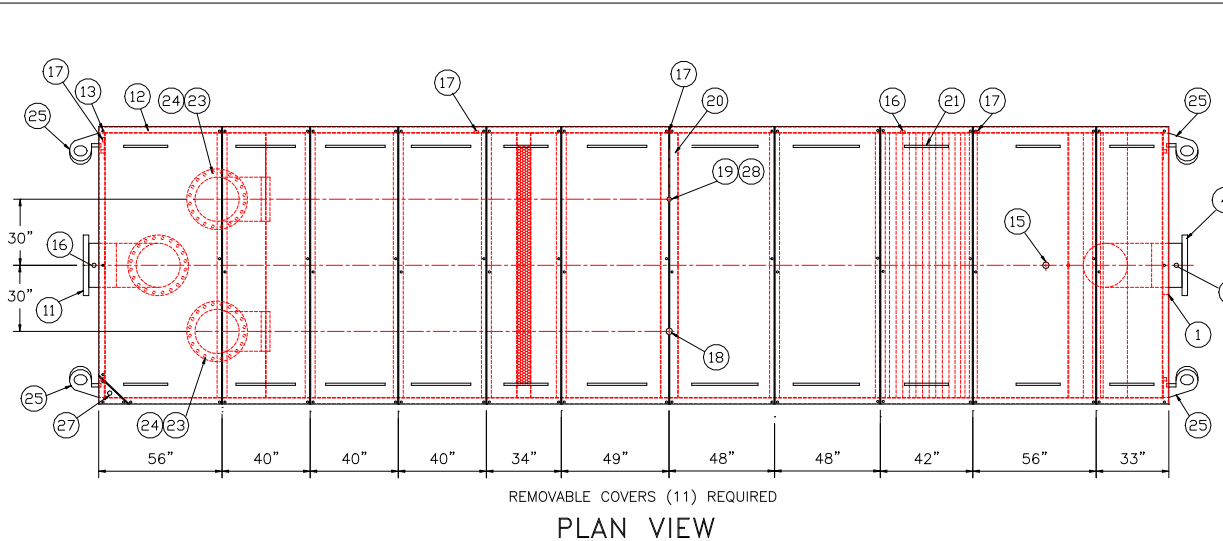
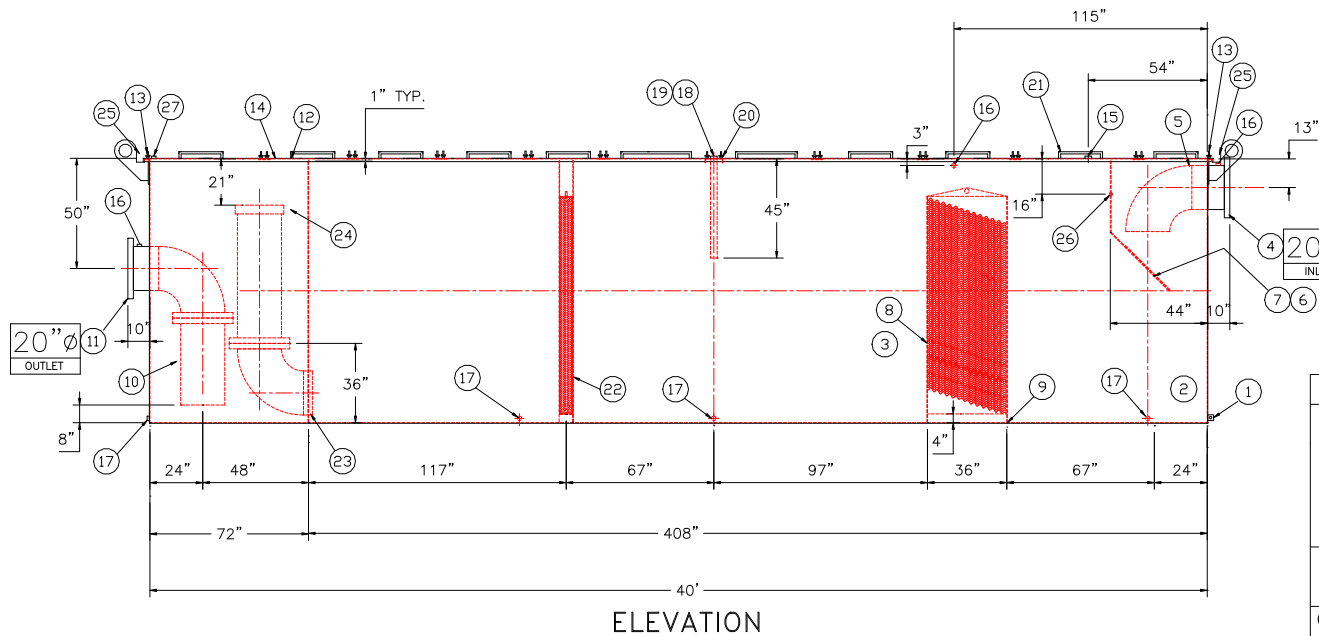
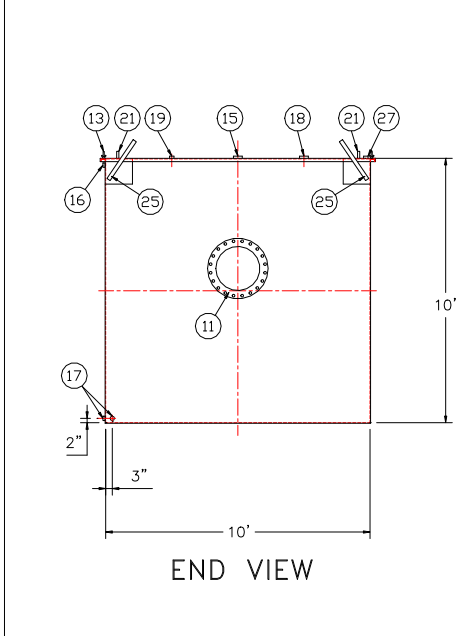


GENERAL SPECIFICATIONS		
NO. REQ'D: (1)		
CAPACITY: 30000 GALLONS		
TYPE: RECTANGULAR, HTC, ABOVEGROUND, SINGLE WALL		
MATERIAL: MILD CARBON STEEL		
GAUGE:		
SHELL- 3/8"		
HEADS- 3/8"		
SURFACE PREP:		
SSPC NO.10 BLAST ALL INTERIOR SURFACES		
SSPC NO.6 BLAST ALL EXTERIOR SURFACES		
COATING:		
MATERIAL		
THICKNESS		
EXTERIOR- CHEMPRIME 3001 (3-6 MILS)		
CHEMLINE 3300 (2-3 MILS)		
TOP COAT "WHITE"		
INTERIOR- CHEMLINE 4200 PW (15 MILS)		
CONSTRUCTION:		
BUTT FIT & WELD ALL CORNERS IN & OUT		
NOTES		
1. ALL INTERNAL MATERIAL FITS TO GA		
2. ALL THREADED DRAIN FITTINGS TO HAVE STEEL THREADED PLUGS AND COATED WITH TANK		
3. ALL OTHER THREADED FITTINGS TO HAVE PVC THREADED PLUGS		
4. LIFTING LUGS HAVE REINFORCING PLATES		



PROVIDED EQUIPMENT	
1.	3"x3"x1/4" FLAT W/ 9/16"Ø HOLE DRILLED IN CENTER (GROUNDING LUG)
2.	SEDIMENT CHAMBER
3.	OIL WATER SEPARATOR CHAMBER
4.	150# RFSO FLANGED INLET
5.	STEEL INLET ELBOW PIPING
6.	VELOCITY HEAD DIFFUSION BAFFLE - 10GA
7.	WEAR PLATE - 1/4"
8.	REMOVABLE PARALLEL CORRUGATED PLATE COALESCER. CORELLA PVC PLATES (1" PLATE SPACING)
9.	SLUDGE BAFFLE - 10GA
10.	FLANGED PVC OUTLET DOWNCOMER PIPE
11.	150# RFSO FLANGED OUTLET W/ INTERNAL STEEL ELBOW AND FLANGE
12.	(11) PIECE COVER W/ 5/8" BOLT HOLES - 7 GA
13.	NUTS & BOLTS W/ LARGE WING NUTS-TYP. (CORROSION RESISTANT)
14.	GASKET MATERIAL (FOR EACH REMOVABLE COVER)
15.	3"Ø FNPT (CLEAN-OUT)
16.	2"Ø FNPT (VENT)
17.	2"Ø FNPT HALF COUPLING (DRAIN) W/ STEEL PLUG
18.	3"Ø FNPT FULL COUPLING W/ 3"Ø INTERNAL PVC PIPE (OIL PUMPOUT)
19.	2"Ø FNPT HALF COUPLING (INTERFACE LEVEL SENSOR)
20.	7GA. CROSSMEMBER 9" WIDE FOR OIL PUMP-OUT AND LEVEL SENSOR FTGS.
21.	HANDLES PER H.T. STANDARD
22.	6" THICK REMOVABLE PETROSCREEN CARTRIDGE COALESCER
23.	20"Ø STEEL ELBOW W/ FLANGE WELDED TO TOP FOR PVC RISER PIPES
24.	20"Ø ADJUSTABLE FERNCO COUPLING
25.	3/4 THICK LIFTING LUG ANGLED TOWARD CENTER
26.	1"Ø FNPT COUPLING W/ PLUG
27.	2"Ø FNPT HALF COUPLING (SPARE)



NOTE :
ALL RIGHTS RESERVED. THIS DRAWING OR ANY PART THEREOF MUST NOT BE REPRODUCED IN ANY FORM WITHOUT THE WRITTEN PERMISSION OF HIGHLAND TANK.
HIGHLAND TANK SHALL BE RESPONSIBLE ONLY FOR ITEMS INDICATED ON THIS FABRICATION DRAWING UNLESS OTHERWISE NOTED. CUSTOMER IS RESPONSIBLE FOR VERIFYING CORRECTNESS OF SIZE / LOCATION OF FITTINGS , ACCESSORIES & COATINGS SHOWN ON THIS DRAWING

UNLESS OTHERWISE SPECIFIED DIMENSIONS ARE IN INCHES		TOLERANCES ARE + OR - 1"	
SCALE:	DATE:	DWG. BY:	DWG. NO.:
3/16"=1'-0"	1-17-14		30000RECSWHTC

REVISIONS	
 Highland Tank U.S. Patent #4,722,800 Canadian Patent # 1,296,263	
30000 GALLON OIL WATER SEPARATOR RECTANGULAR, HTC, SINGLE WALL	
CUSTOMER:	
PROJECT:	
QUOTE NO:	
CHK'D BY:	

GENERAL SPECIFICATIONS

NO. REQ'D: (1)
CAPACITY: 30000 GALLONS
TYPE: RECTANGULAR, HTC, ABOVEGROUND, SINGLE WALL
MATERIAL: MILD CARBON STEEL
GAUGE:
SHELL- 3/8"
HEADS- 3/8"
SURFACE PREP:
SSPC NO.10 BLAST ALL INTERIOR SURFACES
SSPC NO.6 BLAST ALL EXTERIOR SURFACES

COATING:	MATERIAL	THICKNESS
EXTERIOR-	CHEMPRIME 3001	(3-6 MILS)
	CHEMLINE 3300	(2-3 MILS)
	TOP COAT "WHITE"	

INTERIOR-	CHEMLINE 4200 PW	(15 MILS)
-----------	------------------	-----------

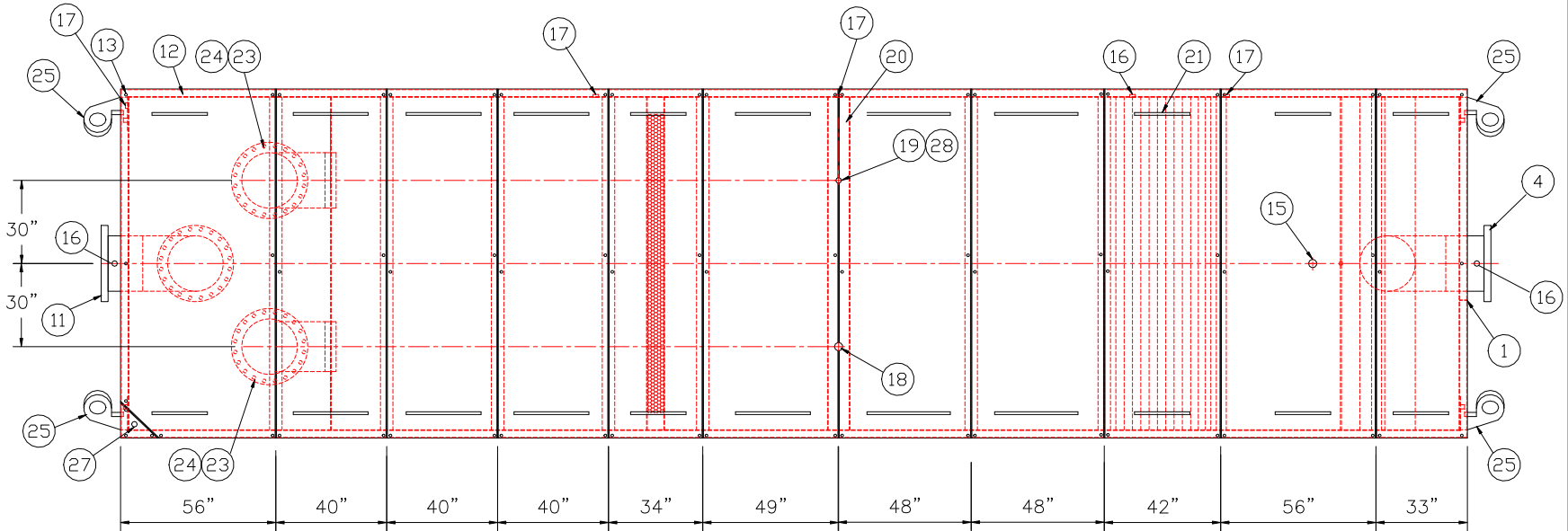
CONSTRUCTION:
BUTT FIT & WELD ALL CORNERS IN & OUT

NOTES

- ALL INTERNAL MATERIAL IS 10 GA
- ALL THREADED DRAIN FITTINGS TO HAVE STEEL THREADED PLUGS AND COATED WITH TANK
- ALL OTHER THREADED FITTINGS TO HAVE PVC THREADED PLUGS
- LIFTING LUGS HAVE REINFORCING PLATES

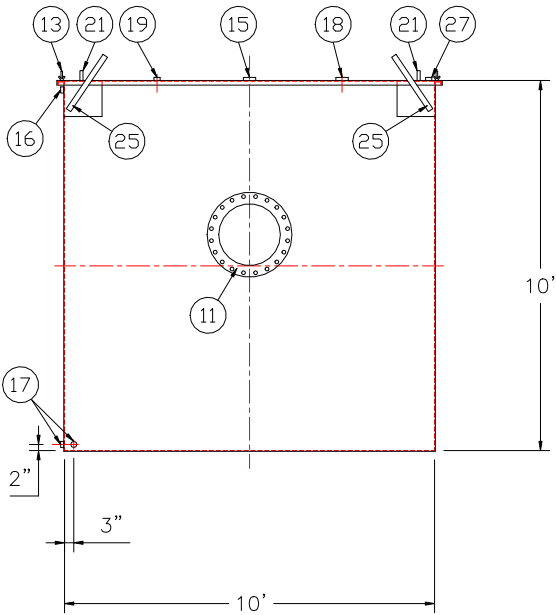
PROVIDED EQUIPMENT

- 3"x3"x1/4" FLAT W/ 9/16"Ø HOLE DRILLED IN CENTER (GROUNDING LUG)
- SEDIMENT CHAMBER
- OIL WATER SEPARATOR CHAMBER
- 150# RFSO FLANGED INLET
- STEEL INLET ELBOW PIPING
- VELOCITY HEAD DIFFUSION BAFFLE - 10GA
- WEAR PLATE - 1/4"
- REMOVABLE PARALLEL CORRUGATED PLATE COALESCER. CORELLA PVC PLATES (1" PLATE SPACING)
- SLUDGE BAFFLE - 10GA
- FLANGED PVC OUTLET DOWNCOMER PIPE
- 150# RFSO FLANGED OUTLET W/ INTERNAL STEEL ELBOW AND FLANGE
- (11) PIECE COVER W/ 5/8" BOLT HOLES - 7 GA
- NUTS & BOLTS W/ LARGE WING NUTS-TYP. (CORROSION RESISTANT)
- GASKET MATERIAL (FOR EACH REMOVABLE COVER)
- 3"Ø FNPT (CLEAN-OUT)
- 2"Ø FNPT (VENT)
- 2"Ø FNPT HALF COUPLING (DRAIN) W/ STEEL PLUG
- 3"Ø FNPT FULL COUPLING W/ 3"Ø INTERNAL PVC PIPE (OIL PUMPOUT)
- 2"Ø FNPT HALF COUPLING (INTERFACE LEVEL SENSOR)
- 7GA. CROSSMEMBER 9" WIDE FOR OIL PUMP-OUT AND LEVEL SENSOR FTGS.
- HANDLES PER H.T. STANDARD
- 6" THICK REMOVABLE PETROSCREEN CARTRIDGE COALESCER
- 20"Ø STEEL ELBOW W/ FLANGE WELDED TO TOP FOR PVC RISER PIPES
- 20"Ø ADJUSTABLE FERNCO COUPLING
- 3/4 THICK LIFTING LUG ANGLED TOWARD CENTER
- 1"Ø FNPT COUPLING W/ PLUG
- 2"Ø FNPT HALF COUPLING (SPARE)

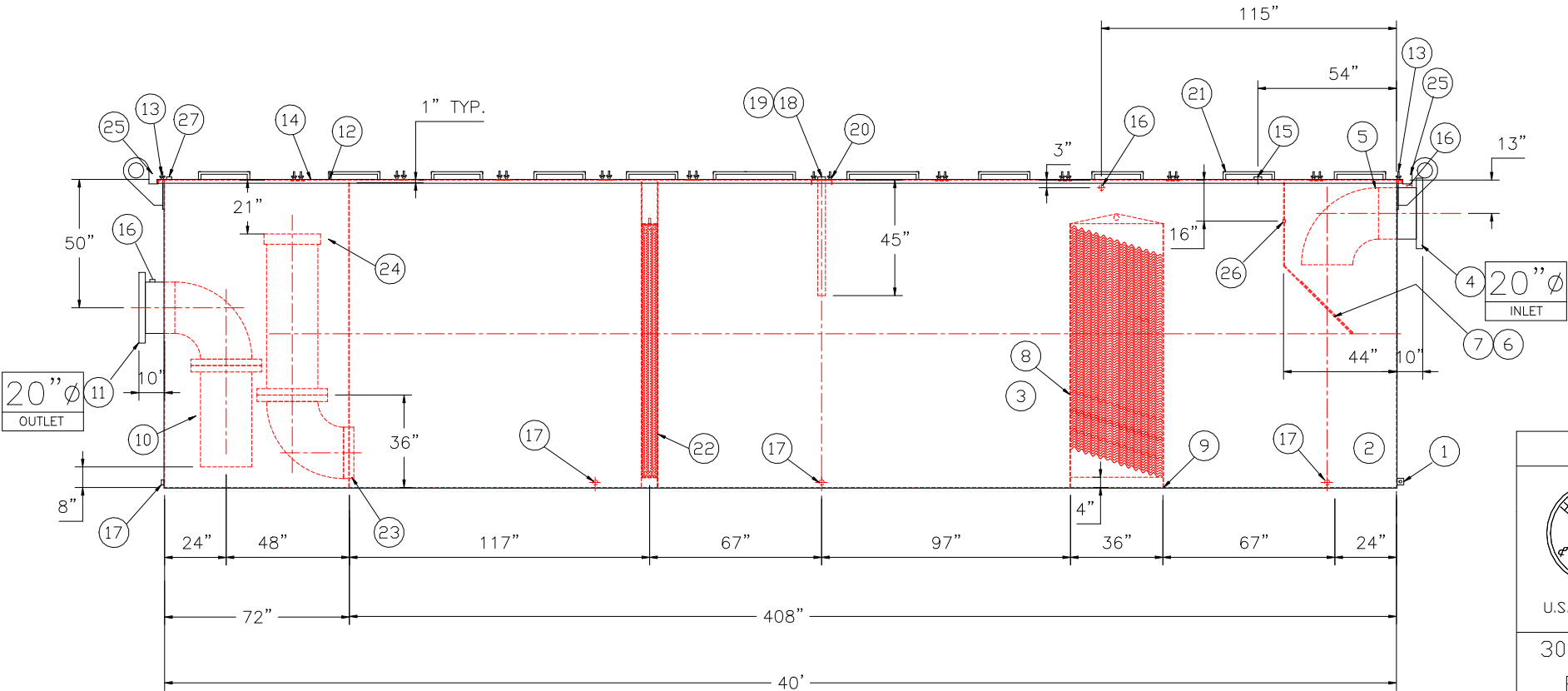


REMOVABLE COVERS (11) REQUIRED

PLAN VIEW



END VIEW



ELEVATION

NOTE :
ALL RIGHTS RESERVED. THIS DRAWING OR ANY PART THEREOF MUST NOT BE REPRODUCED IN ANY FORM WITHOUT THE WRITTEN PERMISSION OF HIGHLAND TANK.
HIGHLAND TANK SHALL BE RESPONSIBLE ONLY FOR ITEMS INDICATED ON THIS FABRICATION DRAWING UNLESS OTHERWISE NOTED. CUSTOMER IS RESPONSIBLE FOR VERIFYING CORRECTNESS OF SIZE / LOCATION OF FITTINGS , ACCESSORIES & COATINGS SHOWN ON THIS DRAWING

REVISIONS



Highland Tank

U.S. Patent #4,722,800 Canadian Patent # 1,296,263

30000 GALLON OIL WATER SEPARATOR
RECTANGULAR, HTC, SINGLE WALL

CUSTOMER:

PROJECT:

QUOTE NO:

CHK'D BY:

UNLESS OTHERWISE SPECIFIED DIMENSIONS ARE IN INCHES
TOLERANCES ARE + OR - 1"

SCALE:

3/16"=1'-0"

DATE:

1-17-14

DWG. BY:

DWG. NO.:

30000RECSWHTC