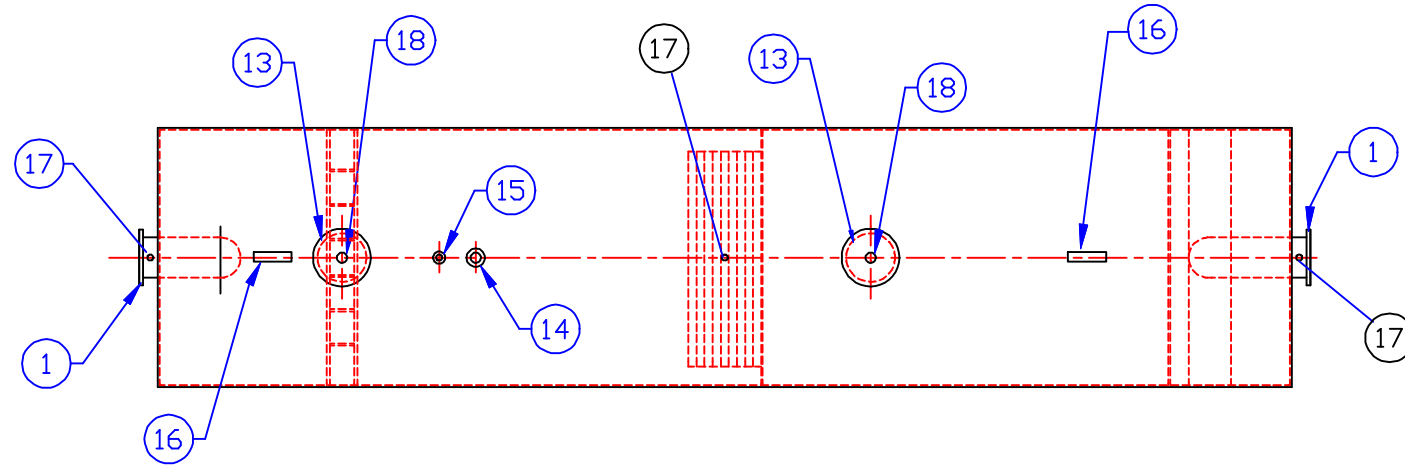


GENERAL SPECIFICATIONS

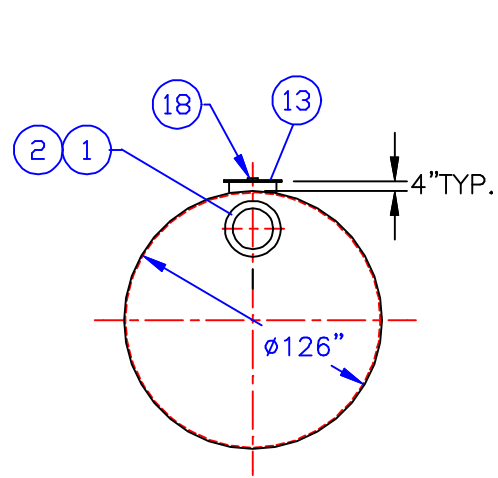
NO. REQ'D: (1)
 CAPACITY: 30,000 GALLONS
 TYPE: HTC, SINGLE WALL, ABOVEGROUND
 MATERIAL: MILD CARBON STEEL
 FLOW RATE: 3,000 GPM
 GAUGE:
 SHELL— 3/8"
 HEADS— 1/4"
 SURFACE PREP:
 NONE
 COATING: MATERIAL THICKNESS
 EXTERIOR— RED PRIMER PER MFG.SPECS.
 INTERIOR— NONE
 CONSTRUCTION:
 LAP FIT & WELD ALL EXTERIOR SEAMS

PROVIDED EQUIPMENT

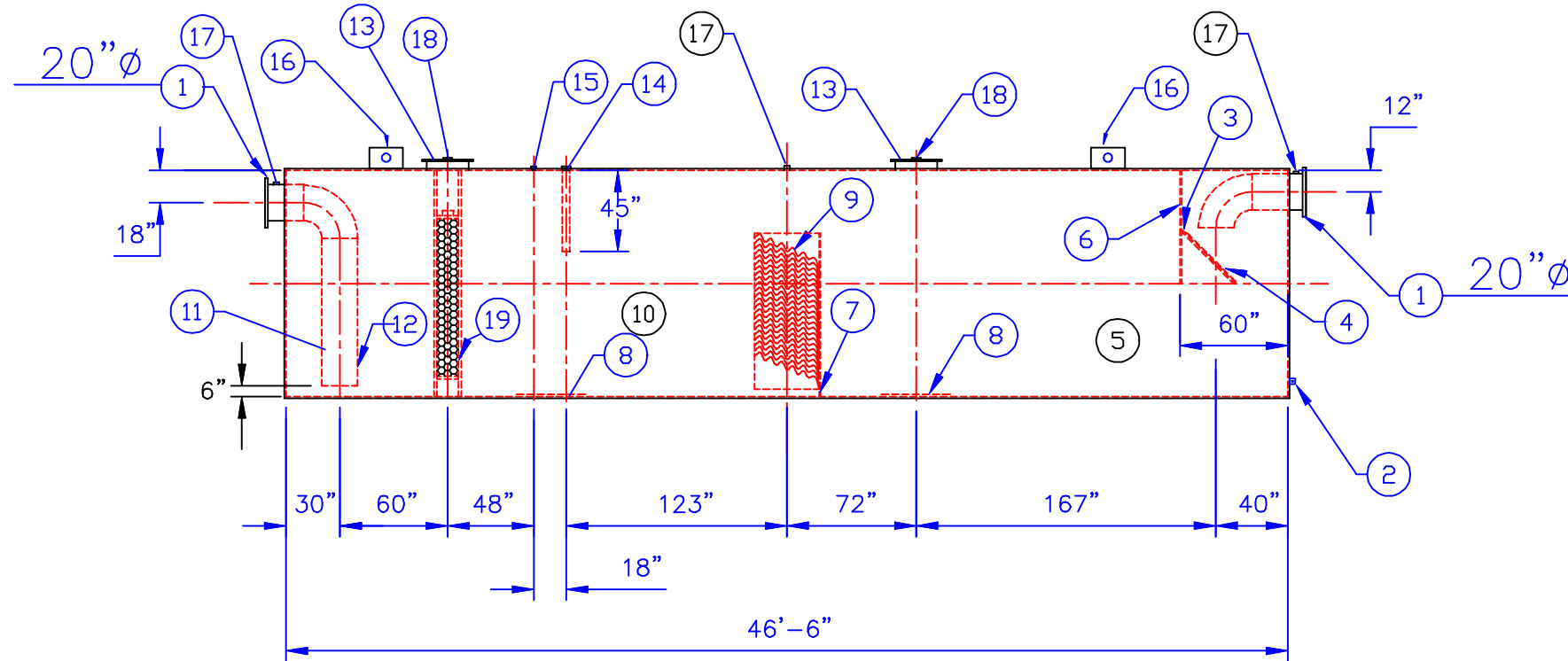
1. 150# R.F.S.O. FLANGE
2. 3" x 3" x 1/4" GROUNDING LUG W/ 5/8" HOLE IN CENTER
3. VELOCITY HEAD DIFFUSION BAFFLE
4. WEAR PLATE
5. SEDIMENT CHAMBER
6. UNDERFLOW BAFFLE
7. SLUDGE BAFFLE
8. STRIKER PLATES
9. PARALLEL CORRUGATED PLATE COALESCER
10. OIL/WATER SEPARATOR CHAMBER
11. MONITORING WELL
12. OUTLET DOWNCOMER
13. 24"Ø MANWAY
14. 4"Ø FTG. FOR OIL PUMPOUT WITH INTERNAL PIPE INSTALLED
15. 2"Ø FTG. FOR LEVEL SENSOR
16. LIFTING LUG
17. 2"Ø FTG. FOR VENT
18. 4" Ø FTG. FOR GAUGE WITH PLUG
19. 6" THICK COALESCER MATERIAL W/ PULL ROD SHIPPED LOOSE



PLAN



END VIEW



ELEVATION

REVISIONS			
		<h1>Highland Tank</h1>	
<small>U.S. Patent #4,722,800 Canadian Patent # 1,296,263</small>			
30000 GALLON OIL WATER SEPARATOR HTC, ABOVEGROUND, SINGLE WALL			
CUSTOMER:			
PROJECT:			
QUOTE NO:			CHK'D BY:
SCALE: 1/8"=1'-0"	DATE:	DWG. BY:	DWG. NO.: 30KHTCSWA100U