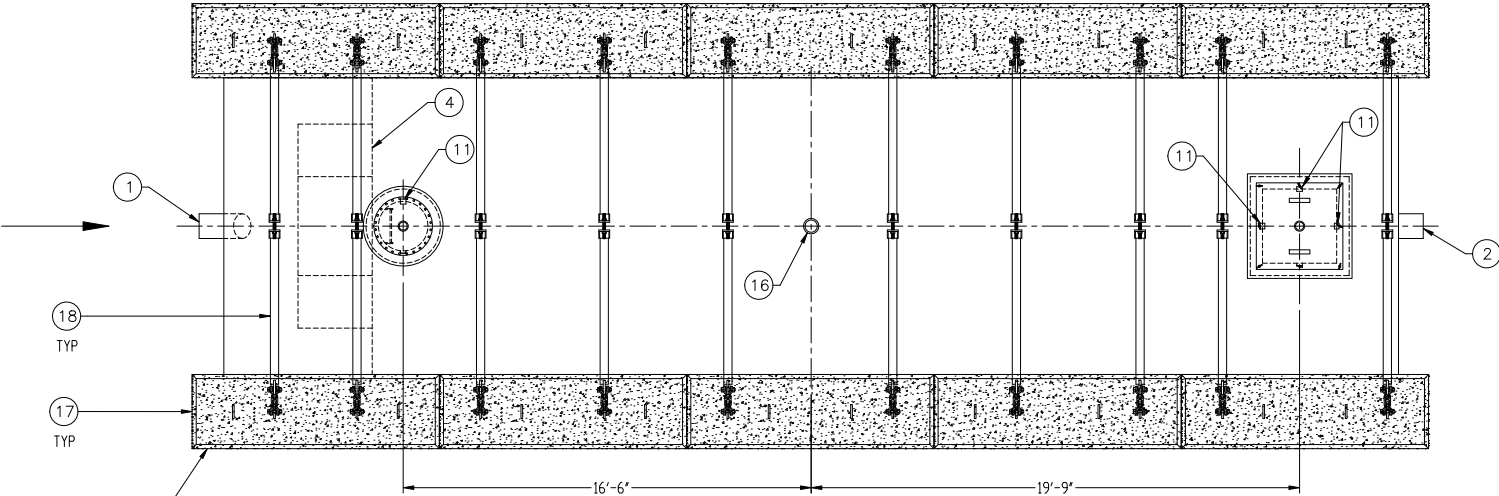
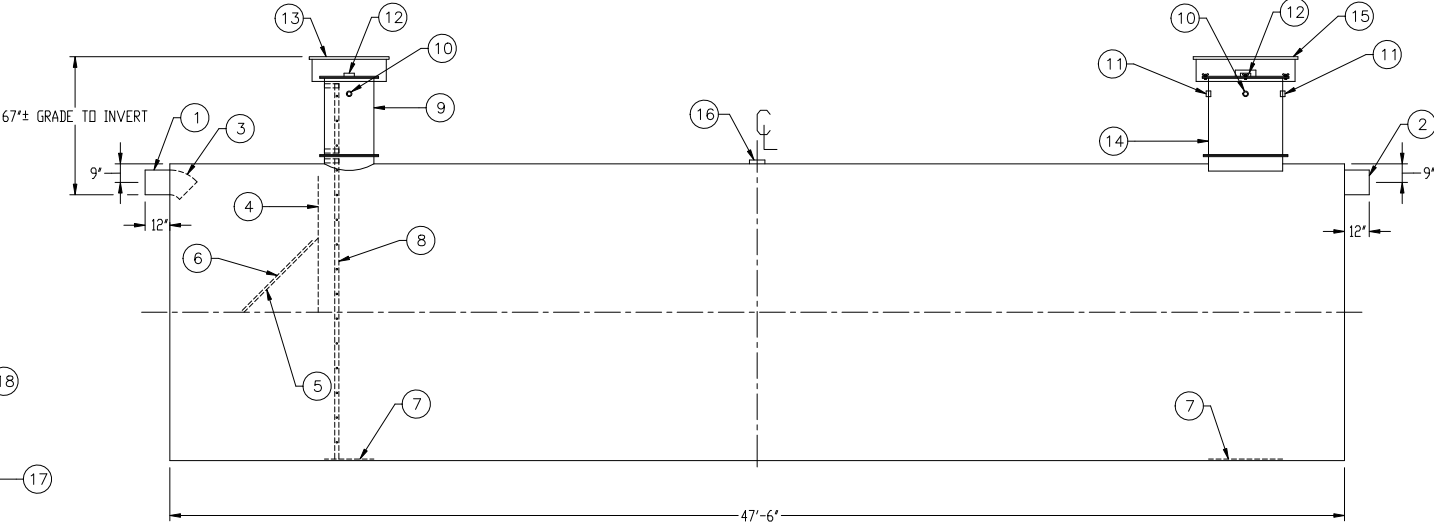
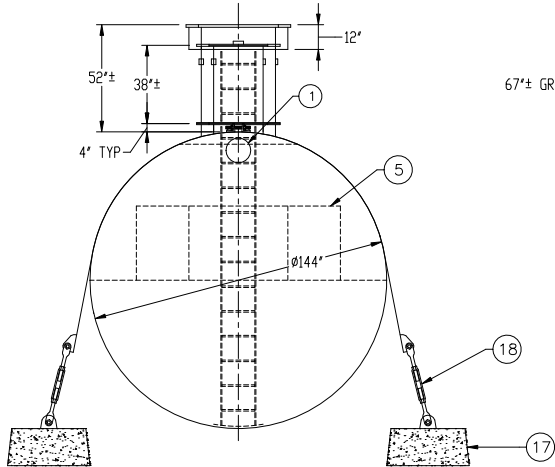


GENERAL SPECIFICATIONS

QUANTITY: ONE (1)  
MODEL: RCT-40000-144  
CAPACITY: 40,000 GALLONS  
TYPE: SINGLE WALL, HIGHGUARD, UNDERGROUND  
MATERIAL: 7/16" CARBON STEEL  
GAUGE OF MATERIAL BASED ON 60" MAX. BURIAL DEPTH  
LAP FIT AND WELD INTERIOR AND EXTERIOR SEAMS  
TANK TEST: 3-5 PSI AIR TEST  
SURFACE PREP: SSPC-SP 10 BLAST INTERIOR SURFACES  
SSPC-SP 6 BLAST EXTERIOR SURFACES  
COATING, EXTERIOR: HIGHGUARD POLYURETHANE - 75 MILS  
COATING, INTERIOR:  
HighDRO®- LINER PLUS POLYURETHANE - 15 MILS  
OPERATING PRESSURE: ATMOSPHERIC



APPROXIMATE LOCATIONS SHOWN FOR DEADMEN & HOLD-DOWN STRAPS  
ACTUAL LOCATIONS TO BE DETERMINED AT TIME OF INSTALLATION




PROVIDED EQUIPMENT

1. 12" SCH 40 PIPE STUB - INLET
2. 12" SCH 40 PIPE STUB - OVERFLOW
3. 12" 45° DIFFUSION ELBOW
4. UNDERFLOW BAFFLE - 7/16"
5. DIFFUSION PLATE - 7/16"
6. 48" x 48" WEAR PLATE - 1/4"
7. STRIKER PLATE
8. STAINLESS STEEL LADDER - 16" WIDE
9. 24" MANWAY WITH BOLT-ON RISER
10. 2" HC - VENT
11. 2" FC FOR WIRING
12. 4" HC GAUGE FTG
13. 36" GRADE-LEVEL MANWAY - SHIPPED LOOSE
14. 36" x 36" MANWAY WITH BOLT-ON EXTENSION

PROVIDED EQUIPMENT

- (CONTINUED)
15. 48" x 48" GRADE-LEVEL MANWAY - SHIPPED LOOSE
  16. 6" HC TANK VENT
  17. (10) CDA-45 CONCRETE DEADMAN
  18. (10) 12'-0" STEEL SAFETY DEADMAN HOLD-DOWN STRAPS WITH TURNBUCKLES AND LINERS

THIS DRAWING IS SUBJECT TO CHANGE AT THE DISCRETION OF THE MANUFACTURER. CONTACT HIGHLAND TANK FOR THE MOST UP-TO-DATE INFORMATION AND DRAWINGS OF OUR PRODUCTS.

**Highland Tank®**

HighDRO®-PURE RAINWATER HARVESTING SYSTEM  
40,000 GALLON CISTERN TANK

CUSTOMER:

PROJECT:

QUOTE NO:

SCALE: DATE: DWG. BY: DWG. NO:

NTS 1/24/17 MGS RCT-40000-144

DIMENSION TOLERANCE: ± 1"