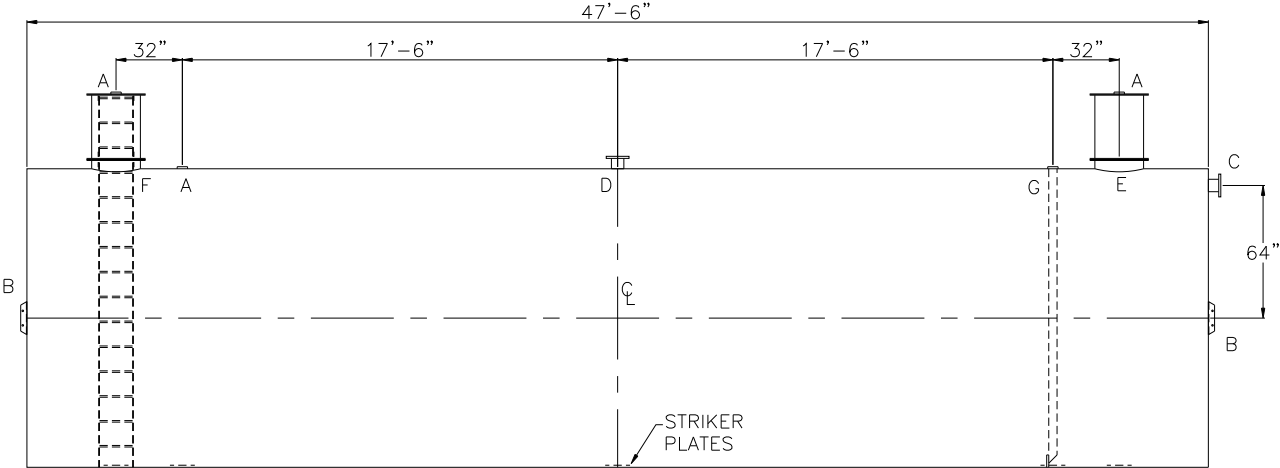
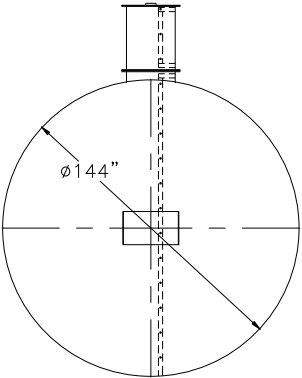


NOTE: ALL RIGHTS RESERVED. THIS
DRAWING MUST NOT BE REPRODUCED IN
ANY FORM WITHOUT THE WRITTEN
PERMISSION OF HIGHLAND TANK®.
HIGHLAND TANK® SHALL BE RESPONSIBLE
ONLY FOR ITEMS INDICATED ON THIS
FABRICATION DRAWING UNLESS OTHERWISE
NOTED. CUSTOMER IS RESPONSIBLE FOR
VERIFYING CORRECTNESS OF SIZE AND
LOCATION OF FITTINGS, ACCESSORIES, AND
COATINGS SHOWN ON THIS DRAWING.



DESIGN DATA
CAPACITY – 40,000 GALLONS
TYPE – SINGLE WALL, WASTEWATER STORAGE TANK
NO. REQ. – –
OPERATING PRESSURE – ATMOSPHERIC
TANK MATERIAL – MILD CARBON STEEL
THICKNESS – HEADS– 5/16"
THICKNESS – SHELL– 1/2"
*GA THK. BASED ON 60" MAX. BURIAL DEPTH
CONSTRUCTION – FLAT FLANGED HEADS, LAP WELD ALL EXTERIOR SEAMS ONLY
TANK TEST – 5 PSIG
INT. FINISH – SP10 BLAST, HighDRO®–LINER PLUS
EXT. FINISH – SP6 BLAST, 75 MILS POLYURETHANE
LABEL – UL–58, UL–1746 PART IV, HIGHGUARD

LEGEND	
A	4" FITTING
B	HTM SPIN BRK'T – MFG USE ONLY – NOT TO BE USED FOR FIELD INSTALLATION
C	FLANGE – INLET
D	FLANGE – VENT
E	24"Ø TIGHT BOLT MANWAY w/ 1/8" NEO–CORK GASKET MATERIAL AND BOLT ON EXTENSION – EXTENSION SHIPS LOOSE FOR INSTALLATION ON SITE BY OTHERS
F	24"Ø TIGHT BOLT MANWAY w/ 1/8" NEO–CORK GASKET MATERIAL AND BOLT ON EXTENSION – EXTENSION SHIPS LOOSE FOR INSTALLATION ON SITE BY OTHERS, INCLUDES INTERNAL ACCESS LADDER
G	4" FITTING WITH 4" SCH 40 DROP PIPE

NOTES:
1) THE HIGHGUARD TANK IS NOT APPROVED FOR THE
STORAGE OF HEATED PRODUCTS.
2) 15,000 VOLT SPARK TEST PROVIDED AT FACTORY.
3) SHOP TO INSTALL 1/4"x12"x12" STRIKER PLATES,
ROLLED AND SEAL WELD TO THE TANK.

△					
		Highland Tank®			
HighDRO® WATER STORAGE TANK					
40,000 GAL 144"Ø HIGHGUARD WASTEWATER STORAGE TANK					
CUSTOMER:					
PROJECT:					
QUOTE NO:				CHK'D BY:	
SCALE: 3/16"=1'-0"	DATE:	DWG. BY:	DWG. NO: 40000HGSWHDWWST144		