

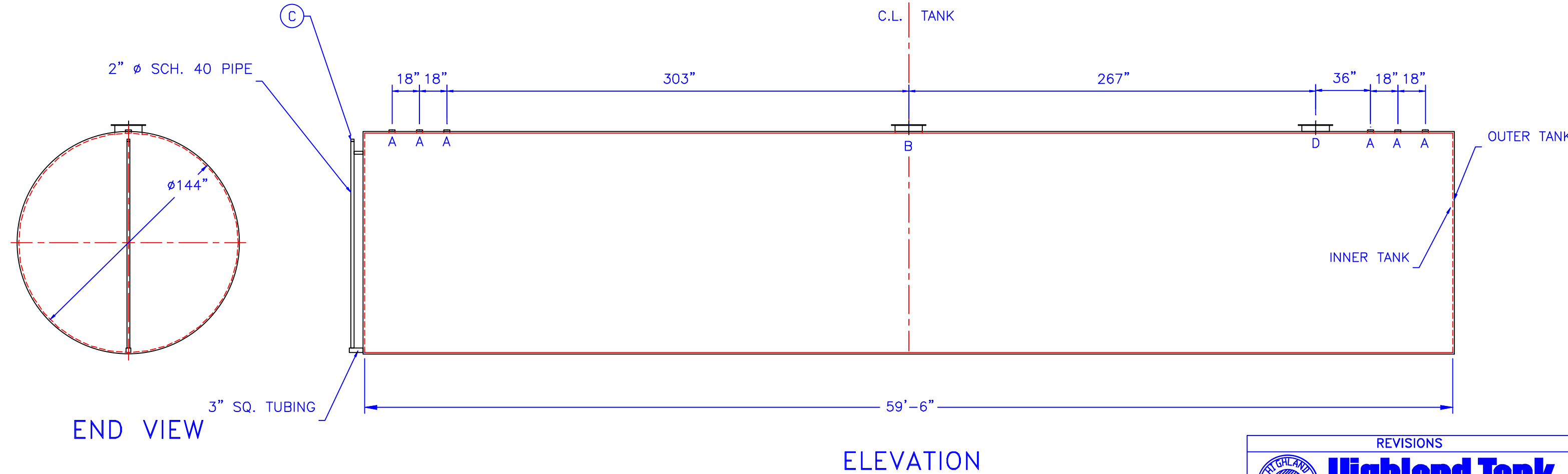
NOTE :  
ALL RIGHTS RESERVED. THIS DRAWING OR ANY PART THEREOF MUST NOT BE REPRODUCED IN ANY FORM WITHOUT THE WRITTEN PERMISSION OF HIGHLAND TANK.  
HIGHLAND TANK SHALL BE RESPONSIBLE ONLY FOR ITEMS INDICATED ON THIS FABRICATION DRAWING UNLESS OTHERWISE NOTED. CUSTOMER IS RESPONSIBLE FOR VERIFYING CORRECTNESS OF SIZE / LOCATION OF FITTINGS , ACCESSORIES & COATINGS SHOWN ON THIS DRAWING

FITTING SCHEDULE

- A= 4" ø NPT
- B= 18" ø LOOSE BOLT MANHOLE FOR PRIMARY EMERGENCY VENT
- C= 2" ø NPT (FITTING FOR LEAK DETECTION)
- D= 18" ø LOOSE BOLT MANHOLE FOR SECONDARY EMERGENCY VENT (NOT TO PENETRATE INNER TANK)

GENERAL NOTES

CAPACITY : 50000 GALLONS  
TYPE : I 360 DOUBLE WALL, ABOVEGROUND HORIZONTAL  
NO. REQ. :  
MATERIAL : MILD CARBON STEEL  
TEST : 5 P.S.I.  
MIN. GAUGE OR THICKNESS (PER U.L. 142):  
INNER HEADS : 3/8"      OUTER HEADS : 1/4"  
INNER SHELL : 3/8"      OUTER SHELL : 1/4"  
PAINT :  
    INTERIOR : NONE  
    EXTERIOR : RED PRIMER  
CONSTRUCTION : FLAT FLANGED HEADS, LAP WELD ALL EXTERIOR SEAMS ONLY  
APPROVED LABELS : U.L. 142



REVISIONS				
<div><div><div><div><div><span></span></div><div>HIGHLAND TANK &amp; MFG. CO.</div></div></div><div><div><div><span></span></div><div>Highland Tank</div></div></div></div></div>				
50000 GALLON ABOVEGROUND HORIZONTAL DOUBLE WALL TYPE I 360				
CUSTOMER:				
PROJECT:				
QUOTE NO:				CHK'D BY:
SCALE: 3/16"=1'-0"	DATE: 5-18-99	DWG. BY:	DWG. NO.: 50K DWI AH	