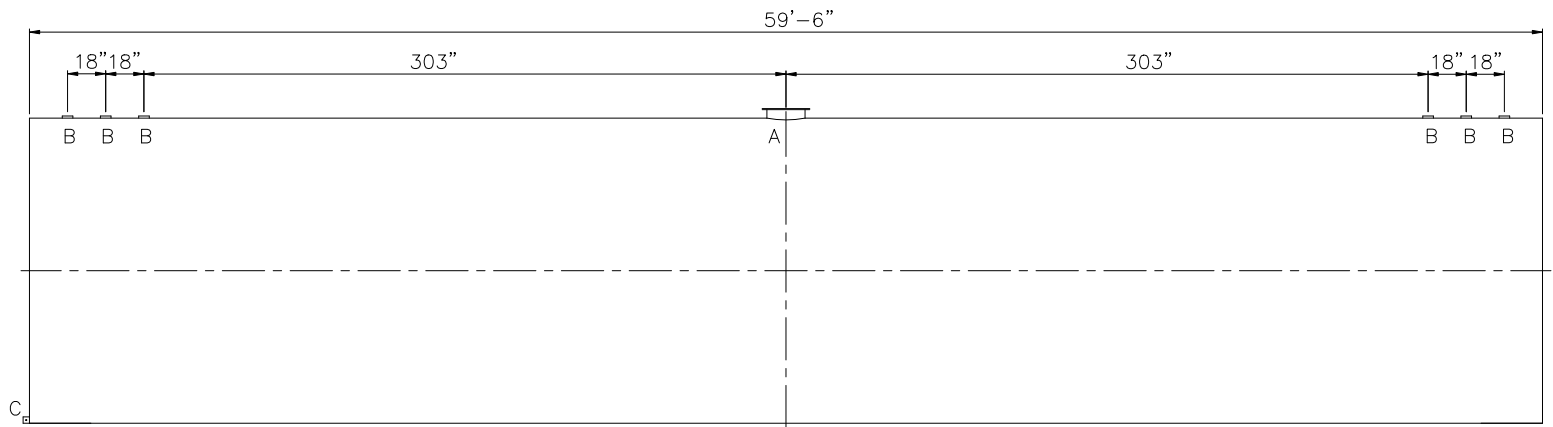



SHIPPING LUGS AS NEEDED

Technical drawing of a circular object, likely a pipe or cylinder, shown in elevation. The drawing includes a horizontal centerline (dashed line) and a vertical centerline (dashed line). A dimension line with arrows at both ends indicates the diameter, labeled $\phi 12'-0''$. A small rectangular feature is shown at the top center of the circle.



<u>LEGEND</u>	
A	18" LOOSE BOLT MANWAY [PRIMARY EMERGENCY VENT]
B	4" FITTING
C	FB-3"x 1/4"x3" WITH 5/8"Ø HOLE ON CL (GROUNDING LUG)
D	—
E	—
F	—

		<h1>Highland Tank</h1>	
UNLESS NOTED, TOLERANCES ARE +/- .1"			
50,000 GAL 144"Ø SW AG HORIZONTAL			
CUSTOMER:			
PROJECT:			
QUOTE NO:		CHK'D BY:	
SCALE: 3/16"=1'-0"	DATE:	DWG. BY:	DWG. NO.: 50000AHSW144