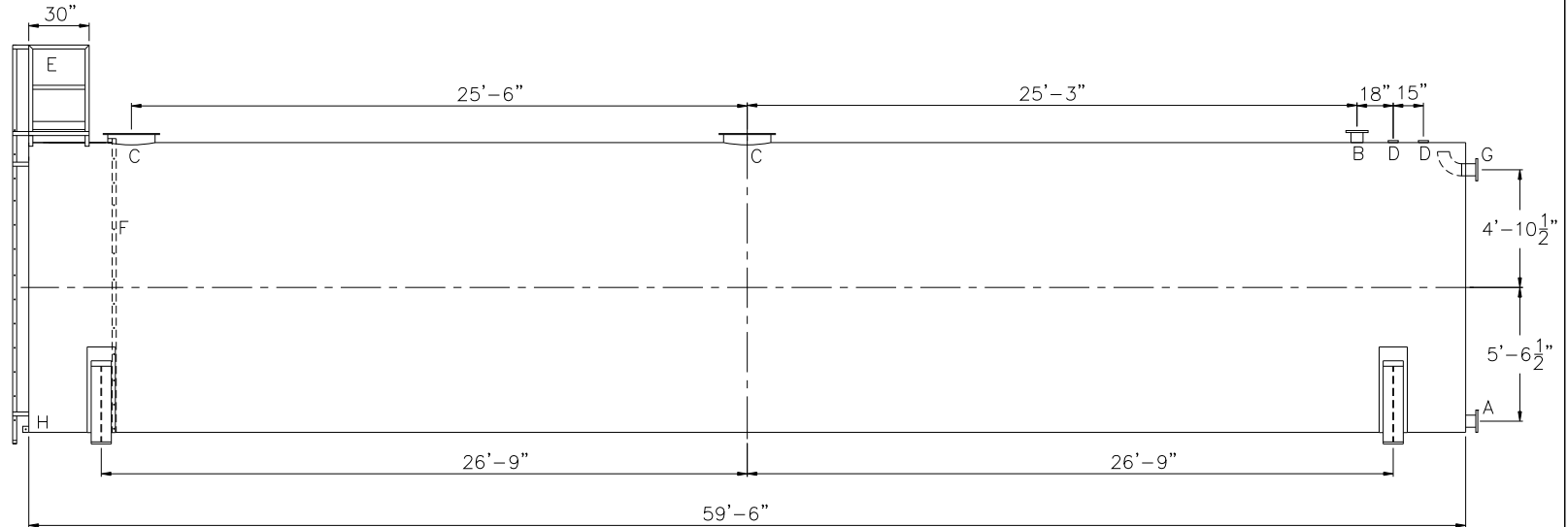
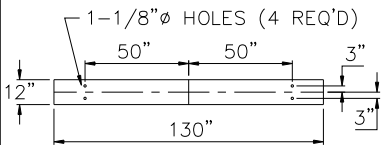



TOUCH UP OF FINISHED PAINT IS  
REQUIRED BY INSTALLATION  
CONTRACTOR. TOUCH UP PAINT SHIPPED  
WITH TANK.

Technical drawing of a ship's hull cross-section. A vertical ladder, labeled 'E', is shown with a height of 42 inches. A horizontal beam is shown with a width of 6 1/2 inches. The hull is labeled 'ø12'-0"'. The drawing is a side view of the hull, showing the internal structure and the ladder.



DESIGN DATA
CAPACITY – 50,000 GALLONS
TYPE – POTABLE WATER TANK (PWT)
NO. REQ. –
OPERATING PRESSURE – ATMOSPHERIC
TANK MATERIAL – MILD CARBON STEEL
THICKNESS: HEADS – 3/8"
THICKNESS: SHELL – 3/8"
CONSTRUCTION – LAP WELD INSIDE & OUTSIDE
TANK TEST – 5 PSIG
INT. FINISH – SP10 BLAST HighDRO®-LINER PLUS FOR NSF 61 APPLICATIONS
EXT. FINISH – SSPC SP6 BLAST, WHITE URETHANE PAINT
LABEL – NONE

LEGEND	
A	FLANGE – SUPPLY
B	FLANGE – VENT
C	24" X 1/4" PLATE TIGHT BOLT MANWAY WITH 1/8" THICK NEO-CORK GASKET
D	4" FNPT CONNECTION
E	STD HTM EXTERNAL LADDER & PLATFORM ASSEMBLY – PAINTED SAFETY YELLOW AND SHIPPED LOOSE FOR INSTALLATION ON SITE BY OTHERS
F	HTM STD INTERNAL LADDER
G	FLANGE WITH INTERNAL 90° ELBOW SHOWN – OVERFLOW
H	FB-3"x 1/4"x3" WITH 5/8"Ø HOLE ON CL (GROUNDING LUG)

		<h1>Highland Tank<sup>®</sup></h1>	
<h2>HighDRO<sup>®</sup> WATER STORAGE TANK</h2>			
<p>50,000 GAL 144"Ø AH POTABLE WATER TANK</p>			
<p>CUSTOMER:</p>			
<p>PROJECT:</p>			
<p>QUOTE NO:</p>		<p>CHK'D BY:</p>	
<p>SCALE: 3/16"=1'-0"</p>	<p>DATE: xx/xx/xx</p>	<p>DWG. BY: xxx</p>	<p>DWG. NO: 50000AHSWHPWT144</p>