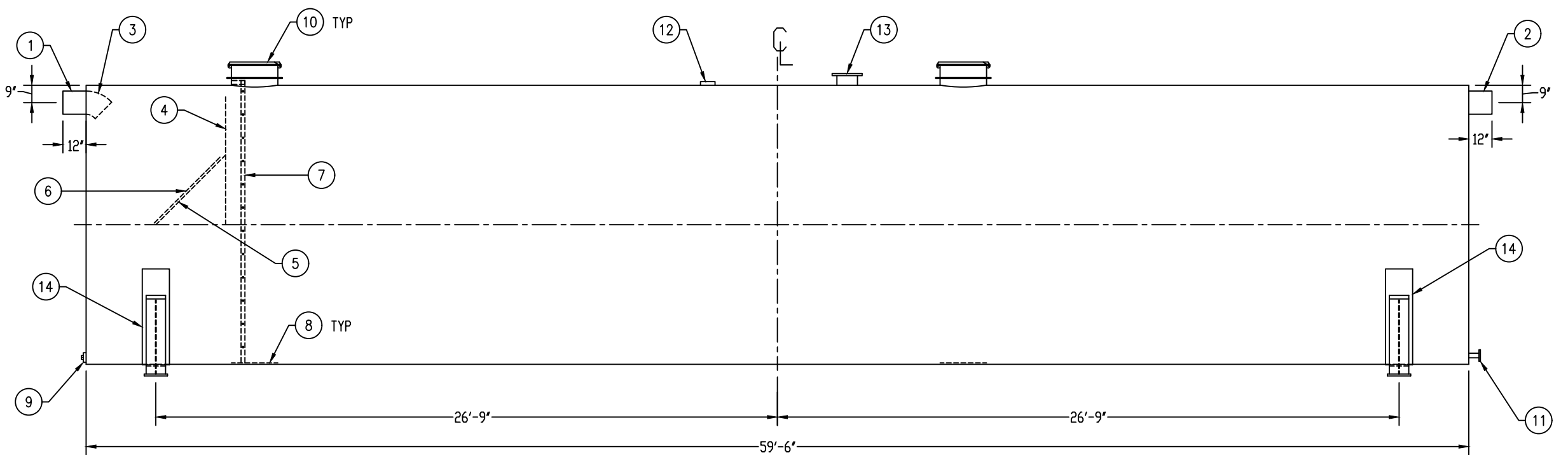
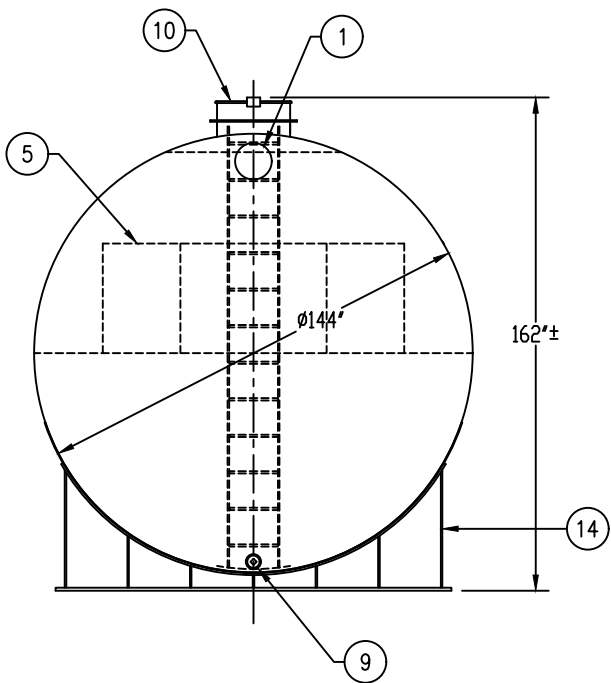


QUANTITY: ONE (1)  
MODEL: RCT-50000-144 AC  
NOMINAL CAPACITY: 50,000 GALLONS  
TYPE: SINGLE WALL, ABOVE-GROUND  
MATERIAL: 3/8" CARBON STEEL  
LAP FIT AND WELD INTERIOR AND EXTERIOR SEAMS  
TANK TEST: 3-5 PSI AIR TEST

Technical drawing of a rectangular structure, likely a cross-section of a building or industrial component. The drawing includes the following features and dimensions:

- Callouts:**
  - 1: Points to a small rectangular feature on the left side.
  - 2: Points to a small rectangular feature on the right side.
  - 4: Points to a vertical dashed line near the left end.
  - 5: Points to a vertical dashed line near the left end.
  - 10 TYP: Points to a circular feature with internal details, labeled "TYP" (typical).
  - 12: Points to a small circular feature on the centerline.
  - 13: Points to a circular feature with internal details.
  - 11: Points to a small rectangular feature on the right end.
- Dimensions:**
  - 22'-6": Dimension from the left vertical dashed line to the centerline.
  - 36": Dimension from the centerline to the vertical line of feature 13.
  - 36": Dimension from the centerline to the vertical line of feature 10.
  - 8'-0": Dimension from the right vertical dashed line to the centerline.
- Other Features:**
  - A horizontal dashed line runs through the center of the structure.
  - A vertical dashed line runs through the center of the structure, labeled "C" at the top.
  - A vertical dashed line is located near the right end.



THE CUSTOMER HAS REVIEWED THIS  
DRAWING AND VERIFIED THE ACCURACY  
OF ALL INFORMATION AND DIMENSIONS.

DATE: \_\_\_\_\_

NOTE: ALL RIGHTS RESERVED. THIS DRAWING, OR ANY PART THEREOF, MUST NOT BE REPRODUCED IN ANY FORM WITHOUT WRITTEN PERMISSION FROM HIGHLAND TANK. UNLESS OTHERWISE NOTED, HIGHLAND TANK SHALL BE RESPONSIBLE ONLY FOR ITEMS INDICATED ON THIS FABRICATION DRAWING. THE CUSTOMER IS RESPONSIBLE FOR VERIFYING THE CORRECTNESS OF THE TYPE, SIZE, AND LOCATION OF ALL FITTINGS, ACCESSORIES, AND RATINGS SHOWN ON THIS DRAWING.

1. 12"Ø SCH 40 PIPE STUB – INLET
2. 12"Ø SCH 40 PIPE STUB – OVERFLOW
3. 12"Ø 45° DIFFUSION ELBOW
4. UNDERFLOW BAFFLE – 3/8"
5. DIFFUSION BAFFLE – 3/8"
6. 48" x 48" x 3/8" WEAR PLATE
7. STAINLESS STEEL LADDER
8. STRIKER PLATE
9. 4" FNPT WITH STEEL PLUG – DRAIN
10. 24"Ø MANWAY WITH FLANGED EASY-ACCESS HATCH
11. 3"Ø-150# RFSO FLANGE – SUCTION
12. 6" FNPT – NORMAL TANK VENT
13. 10"Ø-150# FFSO FLANGE – EMERGENCY VENT
14. 6" HIGH UL SADDLE – SHIPPED LOOSE

THIS DRAWING IS SUBJECT TO CHANGE AT THE DISCRETION OF THE MANUFACTURER. CONTACT HIGHLAND TANK FOR THE MOST UP-TO-DATE INFORMATION AND DRAWINGS OF OUR PRODUCTS.



# Highland Tank®

# HighDRO®-PURE RAINWATER HARVESTING SYSTEM 50,000 GALLON CISTERN TANK

CUSTOMER:

PROJECT:

QUOTE NO:

SCALE:	DATE:
1/10/01	1/10/01

DWG. BY:  
MSE

DWG. BY:	DWG. NO.:
MEG	DOT 50000

ORDER#:

DWG. NO.: 11111111

DIMENSION TOLERANCE:  $\pm 1'$