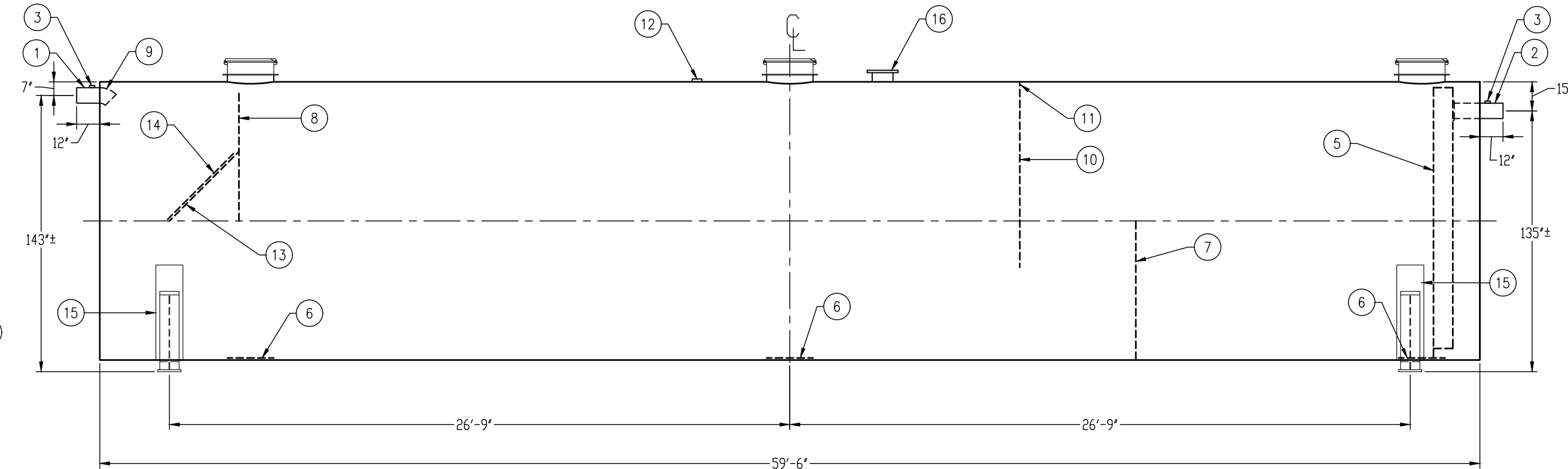
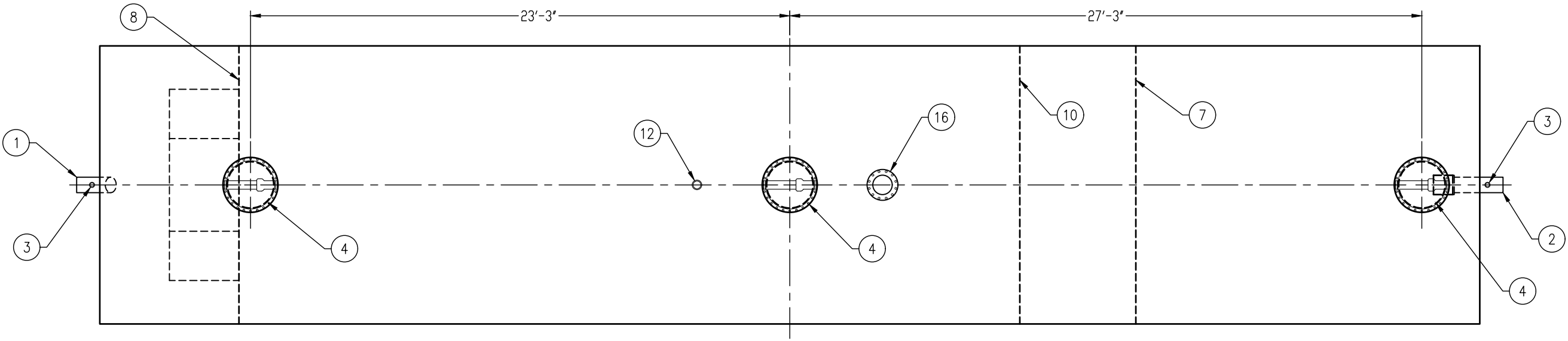
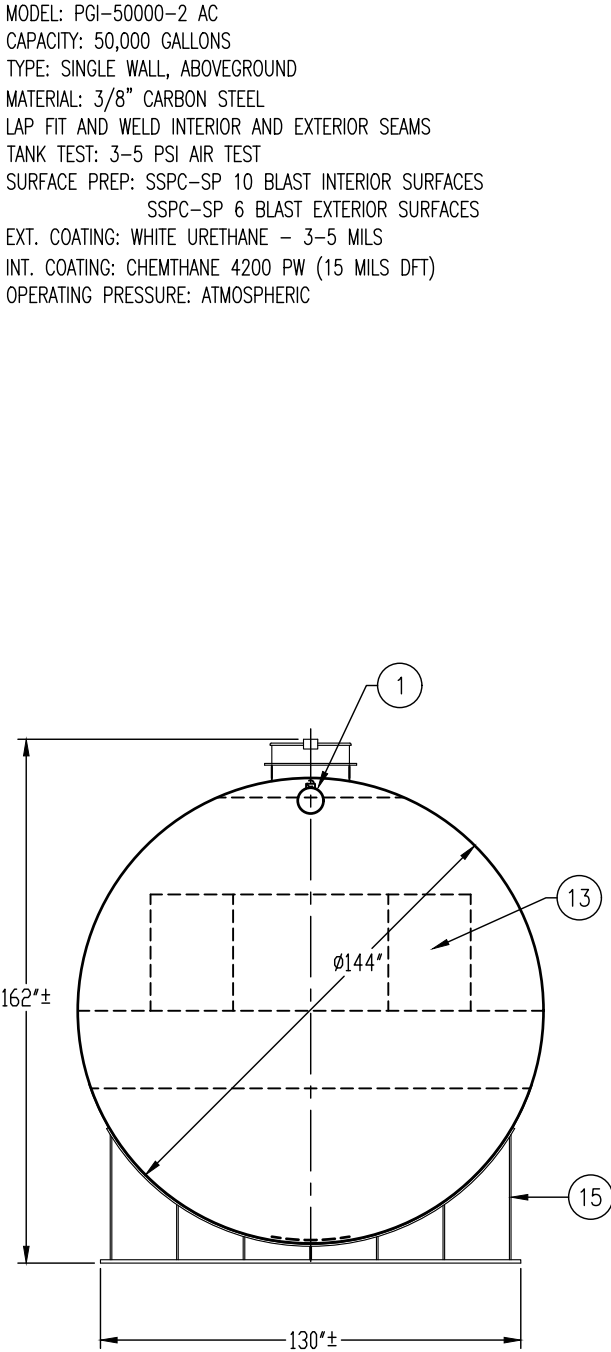


GENERAL SPECIFICATIONS

QUANTITY: ONE (1)
MODEL: PGI-50000-2 AC
CAPACITY: 50,000 GALLONS
TYPE: SINGLE WALL, ABOVEGROUND
MATERIAL: 3/8" CARBON STEEL
LAP FIT AND WELD INTERIOR AND EXTERIOR SEAMS
TANK TEST: 3-5 PSI AIR TEST
SURFACE PREP: SSPC-SP 10 BLAST INTERIOR SURFACES
SSPC-SP 6 BLAST EXTERIOR SURFACES
EXT. COATING: WHITE URETHANE - 3-5 MILS
INT. COATING: CHEMTHANE 4200 PW (15 MILS DFT)
OPERATING PRESSURE: ATMOSPHERIC



PROVIDED EQUIPMENT

- 1. 8"Ø SCH 40 PIPE STUB - INLET
- 2. 8"Ø SCH 40 PIPE STUB - OUTLET
- 3. 2" HC - VENT
- 4. 24"Ø MANWAY WITH FLANGED EASY-ACCESS HATCH
- 5. STEEL OUTLET DOWNCOMER BAFFLE WITH OPEN TOP
- 6. STRIKER PLATE
- 7. SLUDGE BAFFLE - 3/8"
- 8. UNDERFLOW BAFFLE - 3/8"
- 9. 8"Ø 45° DIFFUSION ELBOW
- 10. GREASE DAM - 3/8"
- 11. 2" OPENING FOR AIR CIRCULATION
- 12. 4" HC - NORMAL TANK VENT
- 13. DIFFUSION BAFFLE - 1/4"
- 14. 48" x 48" WEAR PLATE - 1/4"
- 15. 6" HIGH UL SADDLE - SHIP LOOSE
- 16. 10"Ø-150# FFSO FLANGE FOR EMERGENCY VENT

CUSTOMER APPROVAL

THE CUSTOMER HAS REVIEWED THIS
DRAWING AND VERIFIED THE ACCURACY
OF ALL INFORMATION AND DIMENSIONS.

SIGNED:

DATE:

NOTE:
ALL RIGHTS RESERVED. THIS DRAWING, OR ANY PART THEREOF, MUST NOT
BE REPRODUCED IN ANY FORM WITHOUT WRITTEN PERMISSION FROM
HIGHLAND TANK UNLESS OTHERWISE NOTED. HIGHLAND TANK SHALL BE
RESPONSIBLE ONLY FOR ITEMS INDICATED ON THIS FABRICATION DRAWING.
THE CUSTOMER IS RESPONSIBLE FOR VERIFYING THE CORRECTNESS OF
THE TYPE, SIZE, AND LOCATION OF ALL FITTINGS, ACCESSORIES, AND
COATINGS SHOWN ON THIS DRAWING.



Highland Tank®

PASSIVE GREASE INTERCEPTOR
50,000 GALLON DOUBLE-BASIN

CUSTOMER:

PROJECT:

QUOTE NO.:

SCALE:

DATE:

DWG. BY:

DWG. NO.:

ORDER:

DIMENSION TOLERANCE: ± 1"

NTS

2/15/18

MGS

PGI-50000-2 AC