

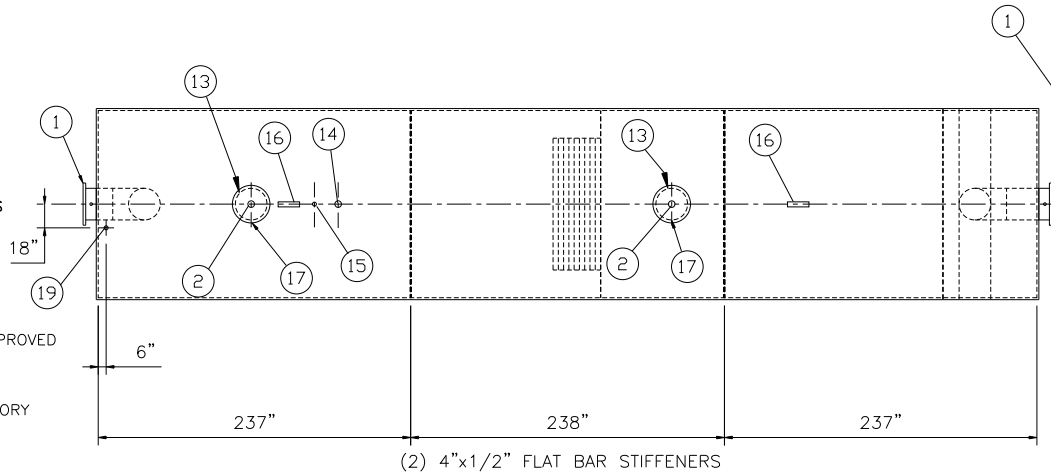
## GENERAL SPECIFICATIONS

NO. REQ'D: (1)  
 CAPACITY: 50000 GALLON  
 TYPE: HT, ACT-100-U, DOUBLE WALL  
 MATERIAL: MILD CARBON STEEL  
 FLOW RATE: 5000 GPM  
 GAUGE: INNER OUTER  
 SHELL- 3/8" 7 GA.  
 HEADS- 5/16" 1/4"  
 SURFACE PREP:  
 SSPC NO.6 BLAST ALL EXTERIOR SURFACES  
 COATING: MATERIAL THICKNESS  
 EXTERIOR- POLYURETHANE (70 MILS)  
 INTERIOR- NONE  
 CONSTRUCTION :  
 LAP FIT & WELD ALL EXTERIOR SEAMS  
 OPERATING PRESSURE : ATMOSPHERIC

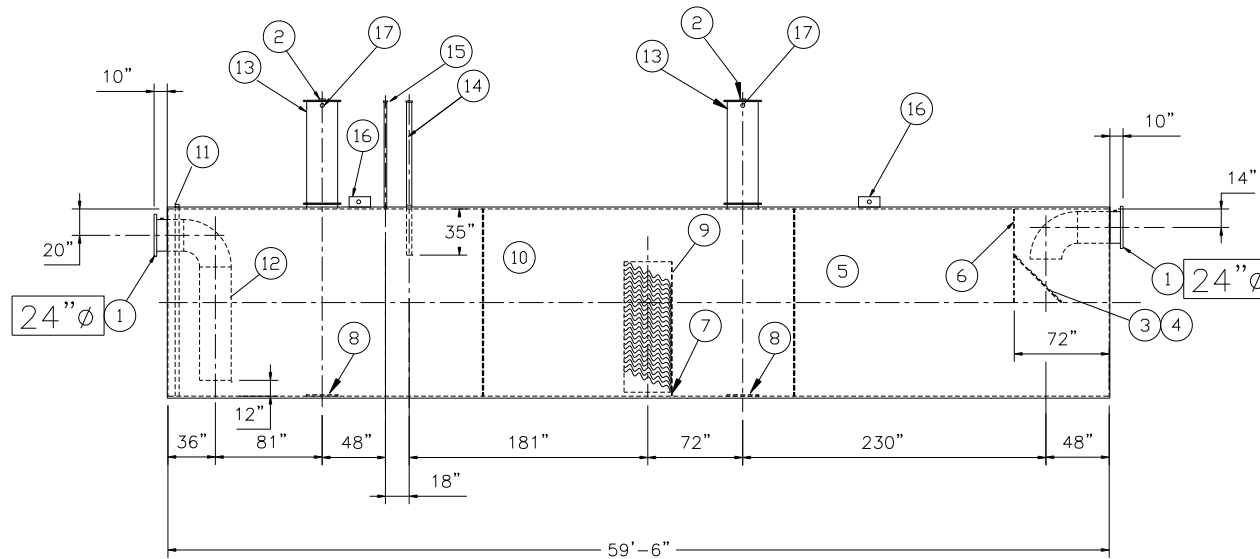
NOTES:  
 1. POLYURETHANE HIGHGUARD TANK IS NOT APPROVED  
 FOR THE STORAGE OF HEATED PRODUCTS  
 2. ALL VENT PIPING BY INSTALLER  
 3. 15000 VOLT SPARK TEST PROVIDED AT FACTORY

## PROVIDED EQUIPMENT

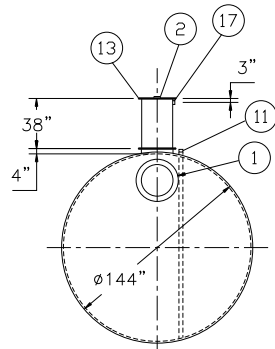
1. 150# R.F.S.O. FLANGE W/ 2" NPT FOR VENT
2. 4"ø FTG. FOR GAUGE WITH PLUG TYP. BOTH MANWAYS
3. VELOCITY HEAD DIFFUSION BAFFLE
4. WEAR PLATE
5. SEDIMENT CHAMBER
6. UNDERFLOW BAFFLE
7. SLUDGE BAFFLE
8. STRIKER PLATES
9. PARALLEL CORRUGATED PLATE COALESCER. CORELLA PVC PLATES
10. OIL/WATER SEPARATOR CHAMBER
11. 2"ø FTG. FOR LEAK DETECTION
12. OUTLET DOWNCOMER
13. 24"ø MANWAY WITH BOLT-ON EXTENSION SHIPPED LOOSE
14. 4"ø FTG. FOR OIL PUMPOUT W/ INTERNAL PIPE INSTALLED & RISER PIPE SHIPPED LOOSE
15. 2"ø FTG. FOR LEVEL SENSOR W/ RISER PIPE SHIPPED LOOSE
16. LIFTING LUG
17. 2"ø FTG. FOR VENT TYP. BOTH MANWAYS



PLAN



ELEVATION



END VIEW

NOTE :  
 ALL RIGHTS RESERVED. THIS DRAWING OR ANY PART THEREOF MUST  
 NOT BE REPRODUCED IN ANY FORM WITHOUT THE WRITTEN PERMISSION  
 OF HIGHLAND TANK.  
 HIGHLAND TANK SHALL BE RESPONSIBLE ONLY FOR ITEMS INDICATED  
 ON THIS FABRICATION DRAWING UNLESS OTHERWISE NOTED. CUSTOMER  
 IS RESPONSIBLE FOR VERIFYING CORRECTNESS OF SIZE / LOCATION  
 OF FITTINGS , ACCESSORIES & COATINGS SHOWN ON THIS DRAWING

## REVISIONS



**Highland Tank**

U.S. Patent #4,722,800 Canadian Patent # 1,296,263  
 #6,606,224 # 2,389,065

50000 GALLON OIL WATER SEPARATOR  
 HT, HIGHGUARD, DOUBLE WALL

CUSTOMER:

PROJECT:

QUOTE NO:

CHK'D BY:

SCALE: 1/8"=1'-0"

DATE: 7-31-07

DWG. BY:

DWG. NO.:

50000HGDWHTHDS