

## GENERAL SPECIFICATIONS

NO. REQ'D: (1)  
CAPACITY: 50,000 GALLON OIL WATER SEPARATOR  
TYPE: UNDERGROUND, HIGHGUARD, HT-G  
DOUBLE WALL TYPE I 360°

MATERIAL: MILD CARBON STEEL  
FLOW RATE: 5,000 GPM  
GAUGE: INNER OUTER  
SHELL- 3/8" 7 GA.  
HEADS- 5/16" 1/4"

SURFACE PREP:  
SSPC NO.6 BLAST ALL EXTERIOR SURFACES  
COATING: MATERIAL THICKNESS  
EXTERIOR- HIGHGUARD (75 MILS)  
INTERIOR- NONE

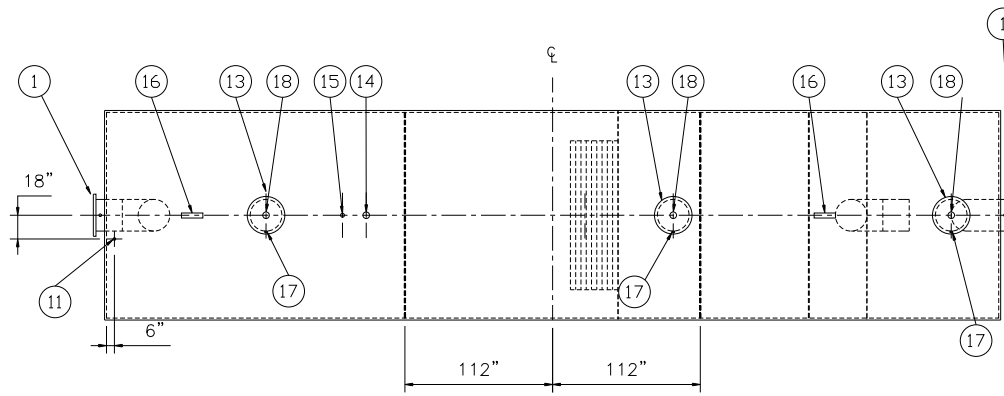
CONSTRUCTION: LAP FIT & WELD ALL EXTERIOR SEAMS  
OPERATING PRESSURE- ATMOSPHERIC

### NOTES:

1. POLYURETHANE HIGHGUARD TANK IS NOT APPROVED FOR THE STORAGE OF HEATED PRODUCTS
2. ALL VENT PIPING BY INSTALLER
3. 15000 VOLT SPARK TEST PROVIDED AT FACTORY

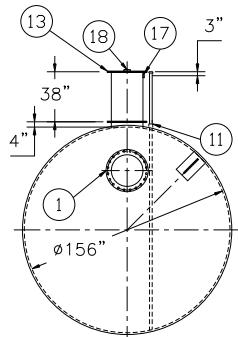
## PROVIDED EQUIPMENT

1. 150# R.F.S.O. FLANGE W/ 2" NPT FOR VENT
2. 5/16" BULKHEAD
3. VELOCITY HEAD DIFFUSION BAFFLE
4. WEAR PLATE
5. SEDIMENT CHAMBER
6. UNDERFLOW BAFFLE
7. SLUDGE BAFFLE
8. STRIKER PLATES
9. PARALLEL CORRUGATED PLATE COALESCER (CORELLA PVC PLATES) 3" PLATE SPACING
10. OIL/WATER SEPARATOR CHAMBER
11. 2" NPT FTG. FOR LEAK DETECTION W/ RISER PIPE SHIPPED LOOSE
12. OUTLET DOWNCOMER
13. 24"Ø MANWAY WITH BOLT-ON EXTENSION SHIPPED LOOSE
14. 4"Ø NPT FTG. FOR OIL PUMPOUT W/ INTERNAL PVC PIPE INSTALLED & RISER PIPE SHIPPED LOOSE
15. 2"Ø NPT FTG. FOR LEVEL SENSOR W/ RISER PIPE SHIPPED LOOSE
16. LIFTING LUG
17. 2"Ø NPT FTG. FOR VENT TYP. ALL MANWAYS
18. 4"Ø NPT FTG. FOR GAUGE WITH PLUG-TYP. ALL MANWAYS
19. GRIT CHAMBER

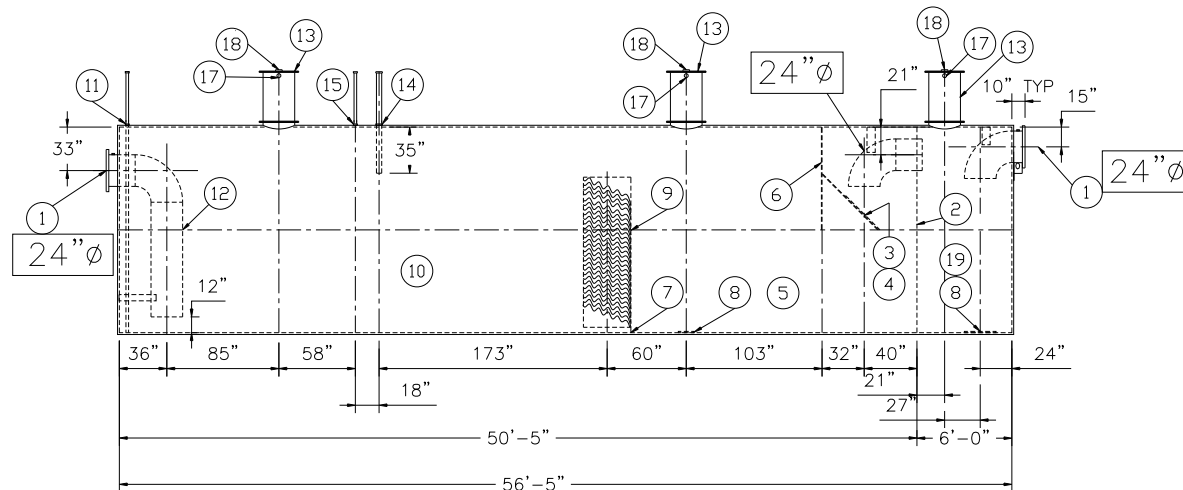


(2) 6"x1/2" FLAT BAR STIFFENERS

### PLAN VIEW



### END VIEW



### ELEVATION

## REVISIONS



# Highland Tank

U.S. Patent #4,722,800 Canadian Patent # 1,296,263

50,000 GALLON OIL WATER SEPARATOR  
HT, HIGHGUARD, DOUBLEWALL, "G" SERIES  
CUSTOMER:

PROJECT:

QUOTE NO:

CHK'D BY:

SCALE: 1/8"=1'-0" DATE: 1/13/09 DWG. BY: DWG. NO.: 50000HGDWHTG

NOTE :  
ALL RIGHTS RESERVED. THIS DRAWING OR ANY PART THEREOF MUST NOT BE REPRODUCED IN ANY FORM WITHOUT THE WRITTEN PERMISSION OF HIGHLAND TANK.  
HIGHLAND TANK SHALL BE RESPONSIBLE ONLY FOR ITEMS INDICATED ON THIS FABRICATION DRAWING UNLESS OTHERWISE NOTED. CUSTOMER IS RESPONSIBLE FOR VERIFYING CORRECTNESS OF SIZE / LOCATION OF FITTINGS , ACCESSORIES & COATINGS SHOWN ON THIS DRAWING