

GENERAL SPECIFICATIONS

NO. REQ'D: (1)  
CAPACITY: 50000 GALLONS  
TYPE: UNDERGROUND, DOUBLE WALL, HIGHGUARD  
TRIPLE BASIN OIL SAND INTERCEPTOR TANK  
MATERIAL: MILD CARBON STEEL  
FLOW RATE: 5000 GPM  
GAUGE: BASED ON 60" BURIAL  
INNER OUTER  
SHELL- 3/8" 7 GA.  
HEADS- 3/8" 1/4"

SURFACE PREP:  
SSPC NO.6 BLAST ALL EXTERIOR SURFACES

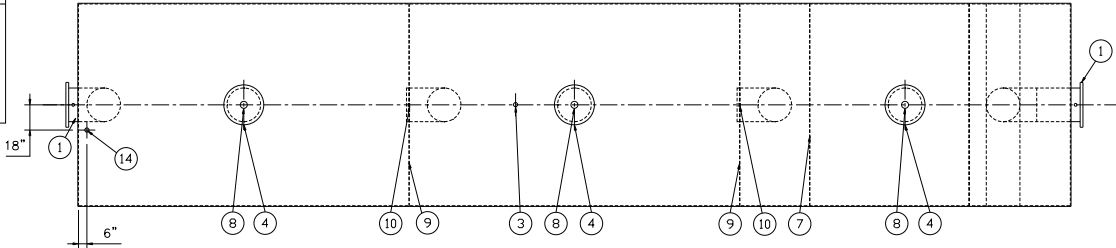
COATING: MATERIAL THICKNESS  
EXTERIOR- POLYURETHANE (75 MILS)  
INTERIOR- NONE  
OPERATING PRESSURE: ATMOSPHERIC

NOTES

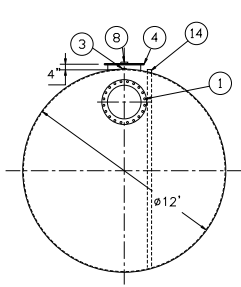
- 1. POLYURETHANE HIGHGUARD TANK IS NOT APPROVED FOR THE STORAGE OF HEATED PRODUCTS
- 2. ALL VENT PIPING BY INSTALLER
- 3. 15000 VOLT SPARK TEST PROVIDED AT FACTORY

PROVIDED EQUIPMENT

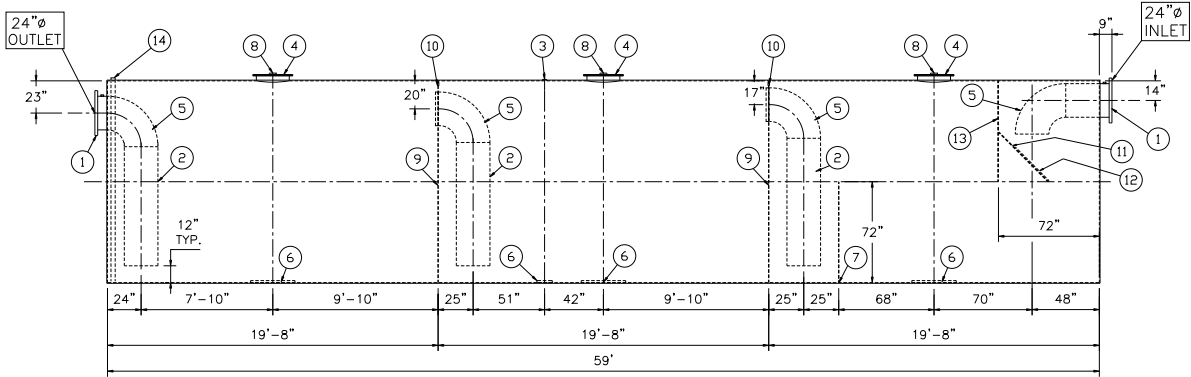
- 1. 150# R.F.S.O. FLANGE W/ 2" Ø FNPT FTG. FOR VENT
- 2. STEEL DOWNCOMER PIPE
- 3. 2" Ø FNPT FTG. FOR VENT
- 4. 24" Ø MANHOLE
- 5. 24" Ø STEEL ELBOW
- 6. STRIKER PLATES
- 7. SLUDGE BAFFLE
- 8. 4" Ø FNPT FTG. FOR GAUGE
- 9. 144" Ø x 7GA. BULKHEAD
- 10. 2" Ø OPENING IN BULKHEAD FOR VENTING
- 11. VELOCITY HEAD DIFFUSION BAFFLE
- 12. WEAR PLATE
- 13. UNDERFLOW BAFFLE
- 14. 2" Ø FNPT FTG. W/ STEEL INTERNAL PIPE FOR LEAK DETECTION



PLAN VIEW



END VIEW



ELEVATION

NOTE :  
ALL RIGHTS RESERVED. THIS DRAWING OR ANY PART THEREOF MUST NOT BE REPRODUCED IN ANY FORM WITHOUT THE WRITTEN PERMISSION OF HIGHLAND TANK.  
HIGHLAND TANK SHALL BE RESPONSIBLE ONLY FOR ITEMS INDICATED ON THIS FABRICATION DRAWING UNLESS OTHERWISE NOTED. CUSTOMER IS RESPONSIBLE FOR VERIFYING CORRECTNESS OF SIZE / LOCATION OF FITTINGS , ACCESSORIES & COATINGS SHOWN ON THIS DRAWING

REVISIONS



Highland Tank

50000 GALLON TRIPLE BASIN INTERCEPTOR  
DOUBLE WALL, HIGHGUARD

CUSTOMER:

PROJECT:

QUOTE NO:

CHK'D BY:

UNLESS OTHERWISE SPECIFIED DIMENSIONS ARE IN INCHES  
TOLERANCES ARE + OR - 1"

SCALE: 1/8"=1'-0"

DATE: 8-17-05

DWG. BY:

DWG. NO.: 50000HGDWINTTB