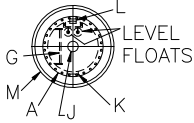


NOTE: ALL RIGHTS RESERVED. THIS DRAWING MUST NOT BE REPRODUCED IN ANY FORM WITHOUT THE WRITTEN PERMISSION OF HIGHLAND TANK. HIGHLAND TANK SHALL BE RESPONSIBLE ONLY FOR ITEMS INDICATED ON THIS FABRICATION DRAWING UNLESS OTHERWISE NOTED. CUSTOMER IS RESPONSIBLE FOR VERIFYING CORRECTNESS OF SIZE AND LOCATION OF FITTINGS, ACCESSORIES, AND COATINGS SHOWN ON THIS DRAWING.

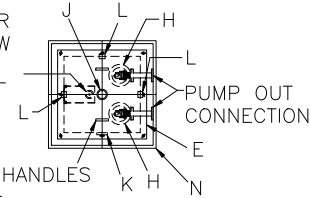
GRADE LEVEL MANWAY  
COVER PLATE NOT  
SHOWN THIS VIEW



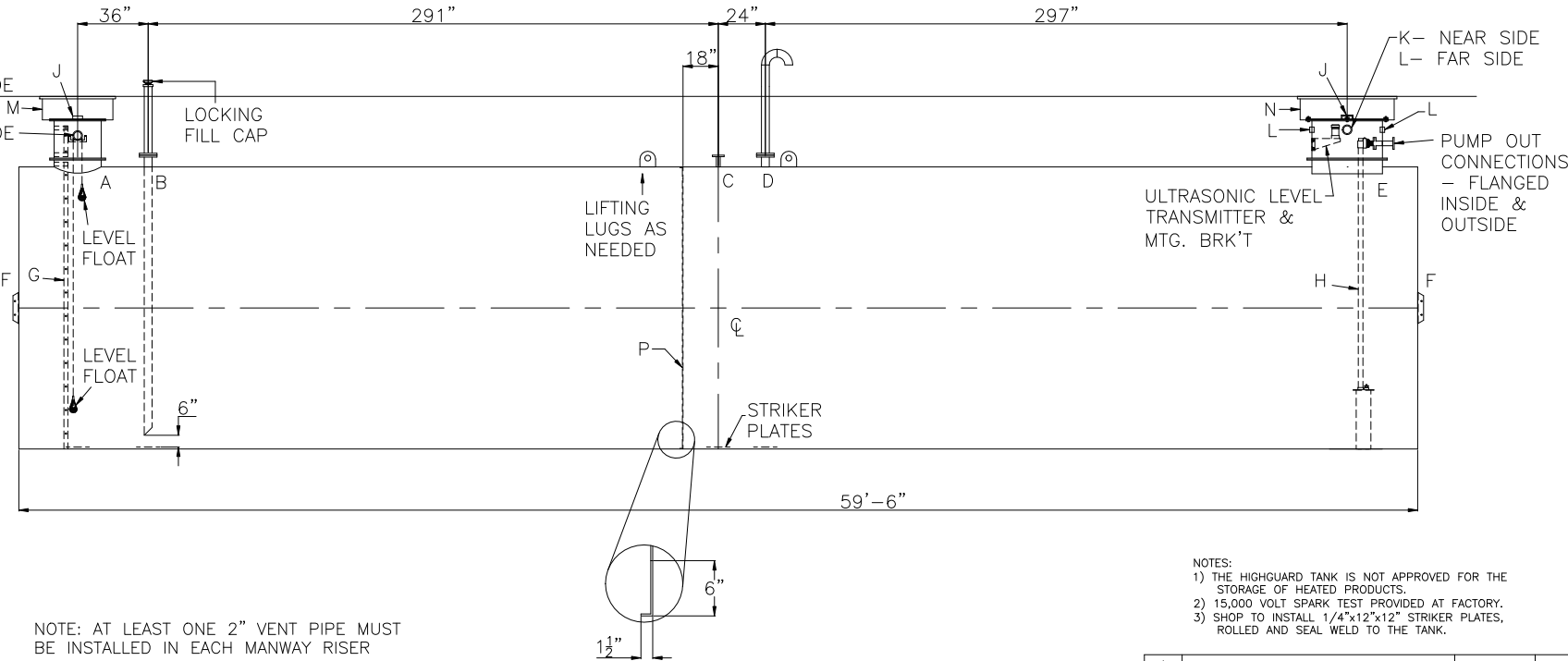
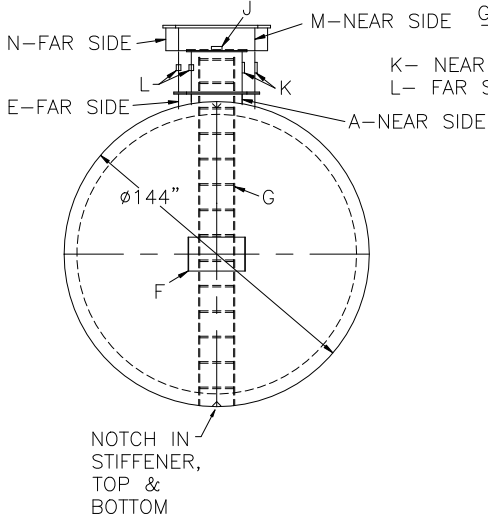
TOP VIEW OF  
MANWAY A

GRADE LEVEL MANWAY COVER  
PLATE NOT SHOWN THIS VIEW

ULTRASONIC LEVEL  
TRANSMITTER &  
MTG/ BRK'T



TOP VIEW OF  
MANWAY E



- NOTES:
- 1) THE HIGHGUARD TANK IS NOT APPROVED FOR THE STORAGE OF HEATED PRODUCTS.
  - 2) 15,000 VOLT SPARK TEST PROVIDED AT FACTORY.
  - 3) SHOP TO INSTALL 1/4"x12"x12" STRIKER PLATES, ROLLED AND SEAL WELD TO THE TANK.

DESIGN DATA
CAPACITY – 50,000 GALLONS
TYPE – SINGLE WALL, HIGHGUARD UNDERGROUND
NO. REQ. – –
OPERATING PRESSURE – ATMOSPHERIC
TANK MATERIAL – MILD CARBON STEEL
THICKNESS – HEADS– 5/16"
THICKNESS – SHELL– 3/8"
*GA THK. BASED ON 60" MAX. BURIAL DEPTH
CONSTRUCTION – FLAT FLANGED HEADS, LAP WELD INSIDE & OUTSIDE
TANK TEST – 5 PSIG
INT. FINISH – SP10 BLAST HighDRO®–LINER PLUS FOR NSF 61 APPLICATIONS
EXT. FINISH – SP6 BLAST, 75 MILS POLYURETHANE
LABEL – UL-1746 PART IV, HIGHGUARD

NOTE: AT LEAST ONE 2" VENT PIPE MUST BE INSTALLED IN EACH MANWAY RISER

LEGEND			
A	24"Ø TIGHT BOLT MANWAY w/ 1/8" THK. EPDM GASKET & MANWAY EXTENSION	H	PUMPS
B	150# RFSO FLANGE WITH SCH 40 DROP TO WITHIN 6" OF TANK BOTTOM (FILL CONNECTION)	J	4" FNPT FITTING (GAUGE)
C	2" 150# RFSO FLANGE	K	4" FNPT FITTING (VENT)
D	150# RFSO FLANGE w/ GOOSENECK VENT (VENT CONNECTION)	L	2" FULL COUPLING (ELECTRICAL CONNECTION)
E	36" x 36" SQ. MANWAY w/ 1/8" THK. EPDM GASKET & MANWAY EXTENSION W/ ALUMINUM COVER PLATE AND HANDLES	M	GRADE LEVEL MANWAY – 36"Ø H-20 W/ LOCKABLE COVER PLATE
F	HTM SPIN BRK'T – MFG USE ONLY – NOT TO BE USED FOR FIELD INSTALLATION	N	GRADE LEVEL MANWAY – 48" x 48" H-20 W/ LOCKABLE COVER PLATE
G	16" WIDE INTERNAL LADDER W/ 3/4" RUNGS ON 12" SPACING.	P	STIFFENER– 3/8" x 1-1/2" x 6"

# Highland Tank

UNLESS NOTED, TOLERANCES ARE +/- 1"

## HighDRO WATER STORAGE TANK

50,000 GAL 144"Ø SINGLE-WALL UNDERGROUND HORIZONTAL FOR POTABLE WATER WITH PUMP OUT

CUSTOMER:

PROJECT:

QUOTE NO:

CHK'D BY:

SCALE: 3/16"=1'-0"

DATE:

DWG. BY:

DWG. NO: 50000HGSWHPWP0144