

GENERAL SPECIFICATIONS

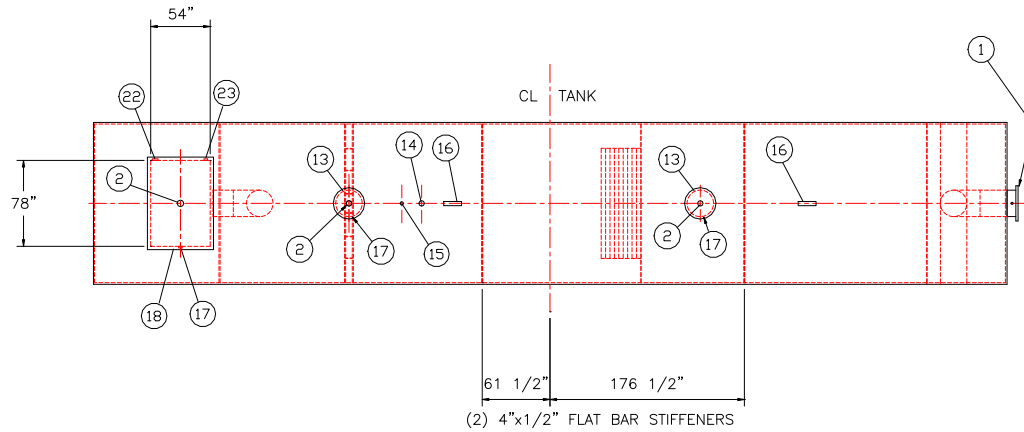
NO. REQ'D: (1)
CAPACITY: 50000 GALLONS
TYPE: HTC-J, HIGHGUARD, SINGLE WALL
MATERIAL: MILD CARBON STEEL
FLOW RATE: 5000 GPM
GAUGE: BASED ON 60" MAX BURIAL
SHELL- 3/8"
HEADS- 5/16"

SURFACE PREP:
SSPC NO.6 BLAST ALL EXTERIOR SURFACES
SSPC NO.10 BLAST ALL INTERIOR OF WATER CHAMBER ONLY

COATING:	MATERIAL	THICKNESS
EXTERIOR-	HIGHGUARD	(75 MILS)
INTERIOR-	POLYURETHANE	(15 MILS)
	INTERIOR OF WATER CHAMBER	

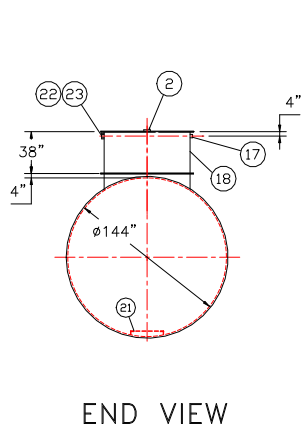
CONSTRUCTION :
LAP FIT & WELD ALL EXTERIOR SEAMS

OPERATING PRESSURE : ATMOSPHERIC

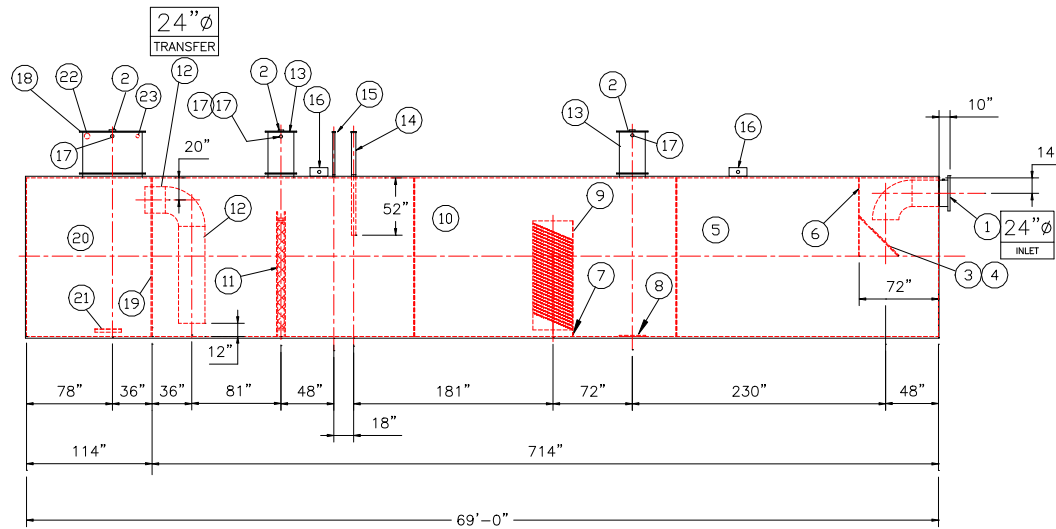


PLAN

- PROVIDED EQUIPMENT
1. 150# R.F.S.O. FLANGE W/ 2" FNPT FOR VENT
 2. 4"Ø FNPT FOR GAUGE WITH PLUG
 3. VELOCITY HEAD DIFFUSION BAFFLE
 4. WEAR PLATE
 5. SEDIMENT CHAMBER
 6. UNDERFLOW BAFFLE (REMOVABLE)
 7. SLUDGE BAFFLE
 8. STRIKER PLATES
 9. PARALLEL CORRUGATED PLATE COALESCER. CORELLA PVC PLATES (3" PLATE SPACING)
 10. OIL/WATER SEPARATOR CHAMBER
 11. 6" THICK PETROSCREEN COALESCER MATERIAL INSTALLED W/ PULL ROD SHIPPED LOOSE
 12. STEEL TRANSFER PIPE W/ DOWNCOMER
 13. 24"Ø MANWAY WITH NEO-CORK GASKETS. BOLT-ON EXTENSION SHIPPED LOOSE
 14. 4"Ø FNPT FOR OIL PUMP-OUT WITH INTERNAL PVC PIPE INSTALLED & RISER PIPE SHIPPED LOOSE
 15. 2"Ø FNPT FOR LEVEL SENSOR WITH RISER PIPE SHIPPED LOOSE
 16. LIFTING LUG
 17. 2"Ø FNPT FOR VENT
 18. RECTANGULAR MANWAY WITH CLOSED CELL SPONGE GASKET. BOLT-ON EXTENSION SHIPPED LOOSE
 19. 1/4" BULKHEAD
 20. EFFLUENT WATER CHAMBER
 21. PUMP MOUNT
 22. 4" FNPT FOR EFFLUENT PUMP CONDUIT AND WIRING
 23. 2" FNPT FOR EFFLUENT LEVEL SENSOR CONDUIT AND WIRING
- ANCILLARY PROVIDED EQUIPMENT
- (4) 24" NEO-CORK MANWAY GASKETS
 - (4) SETS OF NUTS/BOLTS/WASHERS FOR 24" MANWAY
 - (1) 54"x78" CLOSED CELL FOAM MANWAY GASKET
 - (1) 54"x78" RUBBER RIBBON MANWAY GASKET
 - (2) SETS OF NUTS/BOLTS/WASHERS FOR 54"x78" MANWAY
- NOTES
1. POLYURETHANE HIGHGUARD TANK IS NOT APPROVED FOR THE STORAGE OF HEATED PRODUCTS
 2. ALL VENT PIPING BY INSTALLER
 3. 15000 VOLT SPARK TEST PROVIDED AT FACTORY
 4. CUSTOMER TO PROVIDE EFFLUENT PUMPING INFORMATION FOR PROPER PUMP SIZING & PUMPOUT DESIGN



END VIEW



ELEVATION

NOTE :
ALL RIGHTS RESERVED. THIS DRAWING OR ANY PART THEREOF MUST NOT BE REPRODUCED IN ANY FORM WITHOUT THE WRITTEN PERMISSION OF HIGHLAND TANK.
HIGHLAND TANK SHALL BE RESPONSIBLE ONLY FOR ITEMS INDICATED ON THIS FABRICATION DRAWING UNLESS OTHERWISE NOTED. CUSTOMER IS RESPONSIBLE FOR VERIFYING CORRECTNESS OF SIZE / LOCATION OF FITTINGS , ACCESSORIES & COATINGS SHOWN ON THIS DRAWING

UNLESS OTHERWISE SPECIFIED DIMENSIONS ARE IN INCHES
TOLERANCES ARE + OR - 1"

SCALE: NTS	DATE:	DWG. BY:	DWG. NO.: 50000HGSWHTCHDS
------------	-------	----------	---------------------------

REVISIONS

Highland Tank

U.S. Patent #4,722,800 Canadian Patent # 1,296,263

50000 GALLON OIL WATER SEPARATOR
HTC, HIGHGUARD, SINGLE WALL

CUSTOMER:

PROJECT:

QUOTE NO:

CHK'D BY:

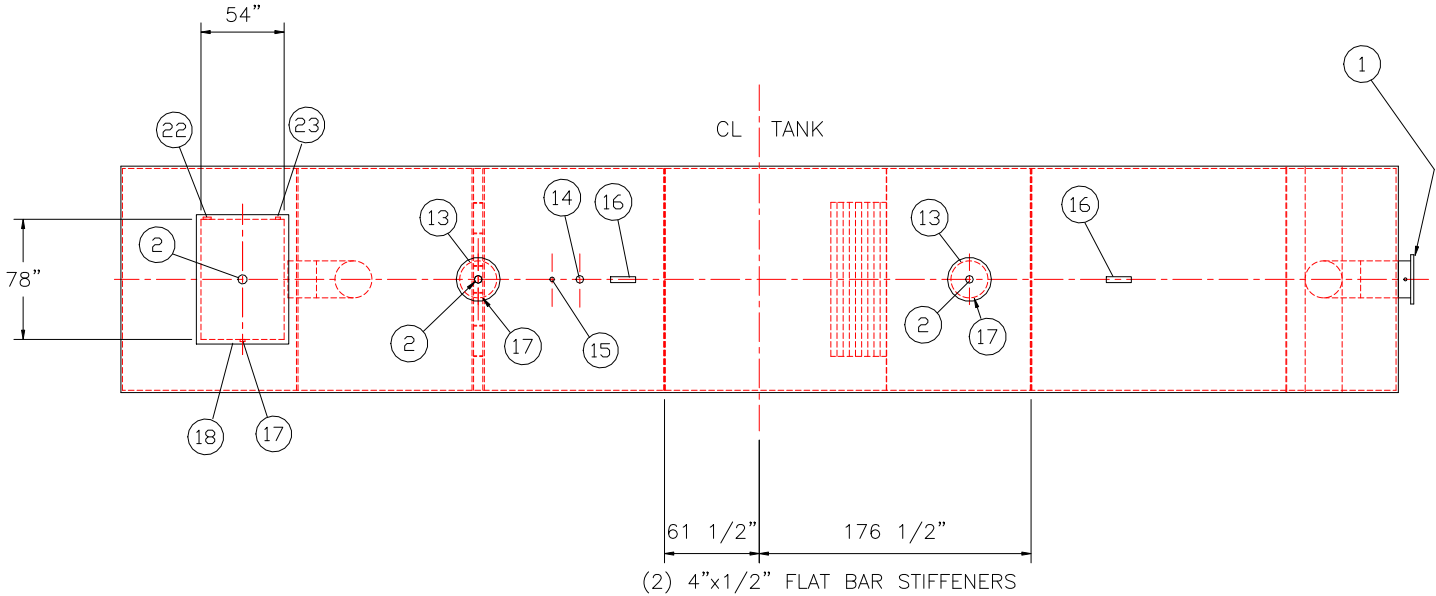
GENERAL SPECIFICATIONS

NO. REQ'D: (1)
CAPACITY: 50000 GALLONS
TYPE: HTC-J, HIGHGUARD, SINGLE WALL
MATERIAL: MILD CARBON STEEL
FLOW RATE: 5000 GPM
GAUGE: BASED ON 60" MAX BURIAL
SHELL- 3/8"
HEADS- 5/16"

SURFACE PREP:
SSPC NO.6 BLAST ALL EXTERIOR SURFACES
SSPC NO.10 BLAST ALL INTERIOR OF WATER CHAMBER ONLY

COATING:	MATERIAL	THICKNESS
EXTERIOR-	HIGHGUARD	(75 MILS)
INTERIOR-	POLYURETHANE INTERIOR OF WATER CHAMBER	(15 MILS)

CONSTRUCTION :
LAP FIT & WELD ALL EXTERIOR SEAMS
OPERATING PRESSURE : ATMOSPHERIC

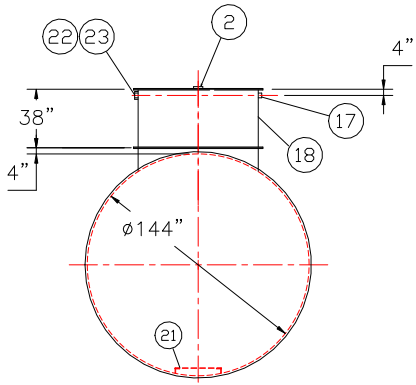


PLAN

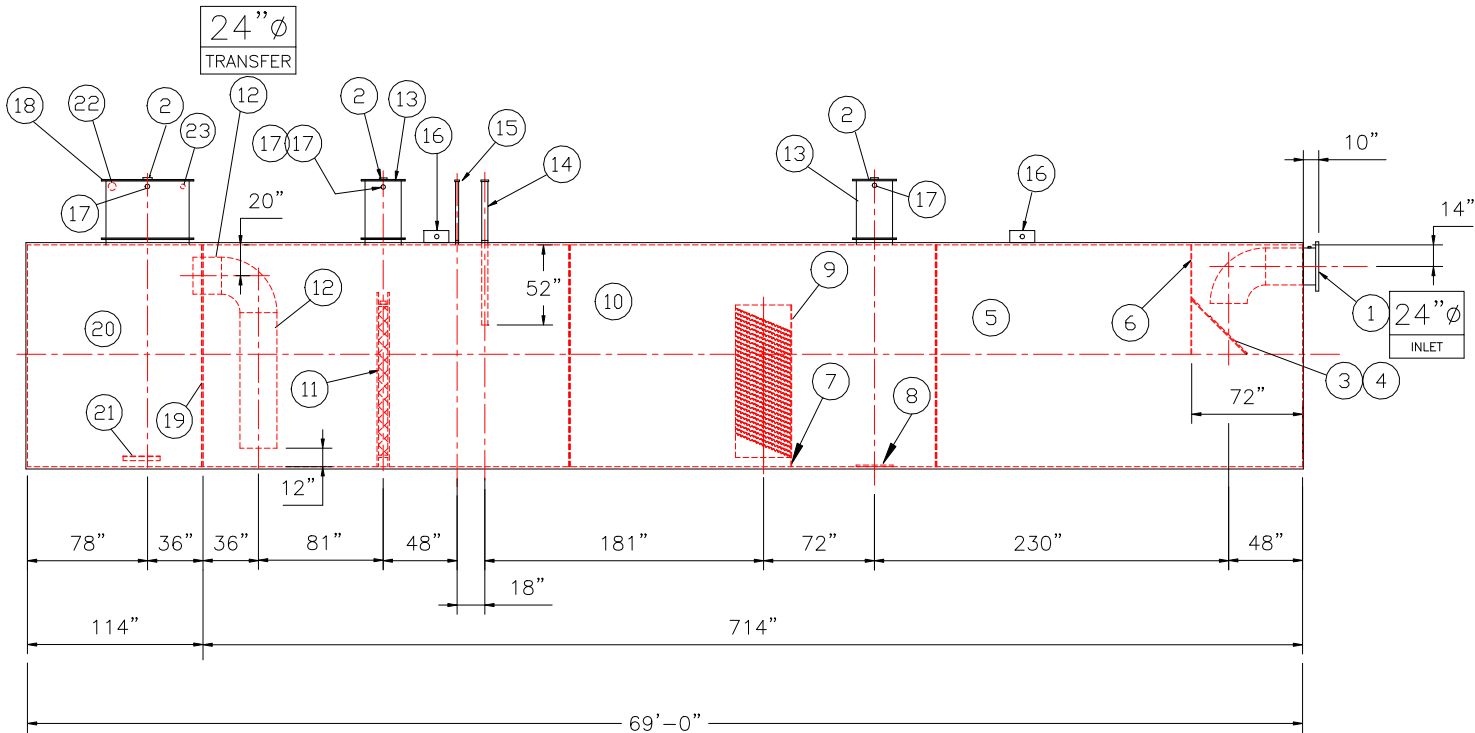
- PROVIDED EQUIPMENT
- 150# R.F.S.O. FLANGE W/ 2" FNPT FOR VENT
 - 4"Ø FNPT FOR GAUGE WITH PLUG
 - VELOCITY HEAD DIFFUSION BAFFLE
 - WEAR PLATE
 - SEDIMENT CHAMBER
 - UNDERFLOW BAFFLE (REMOVABLE)
 - SLUDGE BAFFLE
 - STRIKER PLATES
 - PARALLEL CORRUGATED PLATE COALESCER. CORELLA PVC PLATES (3" PLATE SPACING)
 - OIL/WATER SEPARATOR CHAMBER
 - 6" THICK PETROSCREEN COALESCER MATERIAL INSTALLED W/ PULL ROD SHIPPED LOOSE
 - STEEL TRANSFER PIPE W/ DOWNCOMER
 - 24"Ø MANWAY WITH NEO-CORK GASKETS. BOLT-ON EXTENSION SHIPPED LOOSE
 - 4"Ø FNPT FOR OIL PUMP-OUT WITH INTERNAL PVC PIPE INSTALLED & RISER PIPE SHIPPED LOOSE
 - 2"Ø FNPT FOR LEVEL SENSOR WITH RISER PIPE SHIPPED LOOSE
 - LIFTING LUG
 - 2"Ø FNPT FOR VENT
 - RECTANGULAR MANWAY WITH CLOSED CELL SPONGE GASKET. BOLT-ON EXTENSION SHIPPED LOOSE
 - 1/4" BULKHEAD
 - EFFLUENT WATER CHAMBER
 - PUMP MOUNT
 - 4" FNPT FOR EFFLUENT PUMP CONDUIT AND WIRING
 - 2" FNPT FOR EFFLUENT LEVEL SENSOR CONDUIT AND WIRING

- ANCILLARY PROVIDED EQUIPMENT
- 24" NEO-CORK MANWAY GASKETS
 - SETS OF NUTS/BOLTS/WASHERS FOR 24" MANWAY
 - 54"x78" CLOSED CELL FOAM MANWAY GASKET
 - 54"x78" RUBBER RIBBON MANWAY GASKET
 - SETS OF NUTS/BOLTS/WASHERS FOR 54"x78" MANWAY

- NOTES
- POLYURETHANE HIGHGUARD TANK IS NOT APPROVED FOR THE STORAGE OF HEATED PRODUCTS
 - ALL VENT PIPING BY INSTALLER
 - 15000 VOLT SPARK TEST PROVIDED AT FACTORY
 - CUSTOMER TO PROVIDE EFFLUENT PUMPING INFORMATION FOR PROPER PUMP SIZING & PUMPOUT DESIGN



END VIEW




ELEVATION

NOTE :
ALL RIGHTS RESERVED. THIS DRAWING OR ANY PART THEREOF MUST NOT BE REPRODUCED IN ANY FORM WITHOUT THE WRITTEN PERMISSION OF HIGHLAND TANK.
HIGHLAND TANK SHALL BE RESPONSIBLE ONLY FOR ITEMS INDICATED ON THIS FABRICATION DRAWING UNLESS OTHERWISE NOTED. CUSTOMER IS RESPONSIBLE FOR VERIFYING CORRECTNESS OF SIZE / LOCATION OF FITTINGS , ACCESSORIES & COATINGS SHOWN ON THIS DRAWING

UNLESS OTHERWISE SPECIFIED DIMENSIONS ARE IN INCHES
TOLERANCES ARE + OR - 1"

SCALE:	DATE:	DWG. BY:	DWG. NO.:
NTS			50000HGSWHTCHDS

REVISIONS	
	<h1>Highland Tank</h1>
U.S. Patent #4,722,800 Canadian Patent # 1,296,263	
50000 GALLON OIL WATER SEPARATOR HTC, HIGHGUARD, SINGLE WALL	
CUSTOMER:	
PROJECT:	
QUOTE NO:	CHK'D BY:
UNLESS OTHERWISE SPECIFIED DIMENSIONS ARE IN INCHES TOLERANCES ARE + OR - 1"	