

## GENERAL SPECIFICATIONS

NO. REQ'D: (1)  
CAPACITY: 50,000 GALLON OIL WATER SEPARATOR  
TYPE: UNDERGROUND, HIGHGUARD, HT-G  
SINGLE WALL

MATERIAL: MILD CARBON STEEL  
FLOW RATE: 5,000 GPM

GAUGE:  
SHELL- 3/8"  
HEADS- 5/16"

SURFACE PREP:  
SSPC NO.6 BLAST ALL EXTERIOR SUFACES  
COATING: MATERIAL THICKNESS  
EXTERIOR- HIGHGUARD (75 MILS)  
INTERIOR- NONE

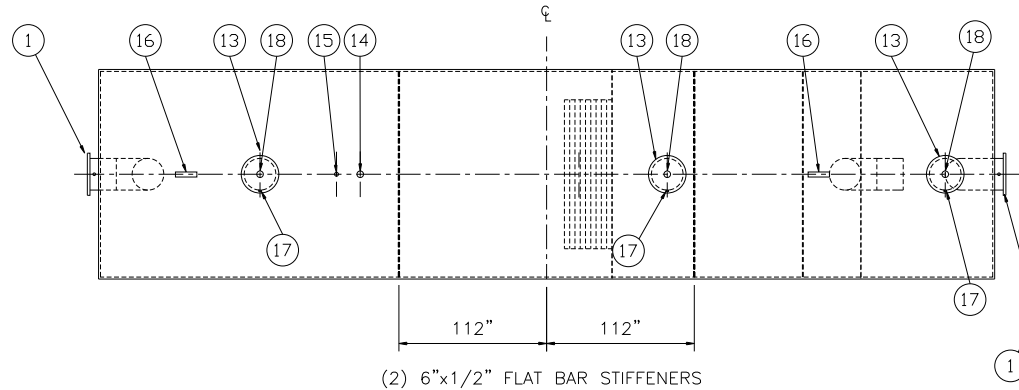
CONSTRUCTION: LAP FIT & WELD ALL EXTERIOR SEAMS  
OPERATING PRESSURE- ATMOSPHERIC

### NOTES:

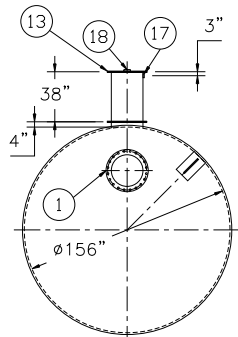
1. POLYURETHANE HIGHGUARD TANK IS NOT APPROVED FOR THE STORAGE OF HEATED PRODUCTS
2. TANK HAS 10 YEAR LIMITED WARRANTY
3. 15000 VOLT SPARK TEST PROVIDED AT FACTORY
4. ALL VENT PIPING BY INSTALLER

## PROVIDED EQUIPMENT

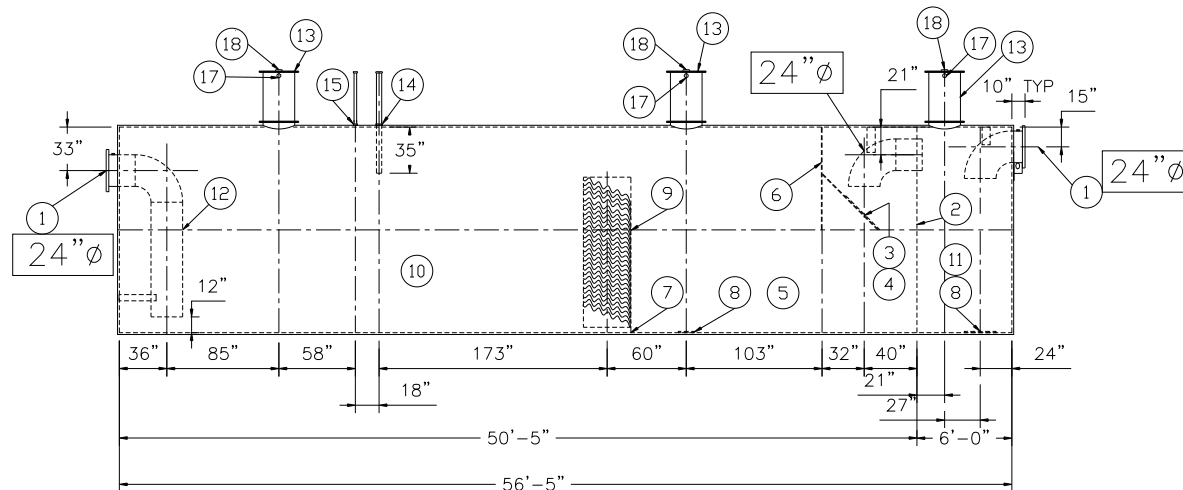
1. 150# R.F.S.O. FLANGE W/ 2" NPT FOR VENT
2. 5/16" BULKHEAD
3. VELOCITY HEAD DIFFUSION BAFFLE
4. WEAR PLATE
5. SEDIMENT CHAMBER
6. UNDERFLOW BAFFLE
7. SLUDGE BAFFLE
8. STRIKER PLATES
9. PARALLEL CORRUGATED PLATE COALESCER (CORELLA PVC PLATES) 3" PLATE SPACING
10. OIL/WATER SEPARATOR CHAMBER
11. GRIT CHAMBER
12. OUTLET DOWNCOMER
13. 24"Ø MANWAY WITH BOLT-ON EXTENSION SHIPPED LOOSE
14. 4"Ø NPT FTG. FOR OIL PUMPOUT W/ INTERNAL PVC PIPE INSTALLED & RISER PIPE SHIPPED LOOSE
15. 2"Ø NPT FTG. FOR LEVEL SENSOR W/ RISER PIPE SHIPPED LOOSE
16. LIFTING LUG
17. 2"Ø NPT FTG. FOR VENT TYP. ALL MANWAYS
18. 4"Ø NPT FTG. FOR GAUGE WITH PLUG-TYP. ALL MANWAYS



PLAN VIEW



END VIEW



ELEVATION

## REVISIONS



# Highland Tank

U.S. Patent #4,722,800 Canadian Patent # 1,296,263

50,000 GALLON OIL WATER SEPARATOR  
HT, HIGHGUARD, SINGLE WALL, "G" SERIES  
CUSTOMER:

PROJECT:

QUOTE NO:

CHK'D BY:

SCALE: 1/8"=1'-0"

DATE: 1/13/09

DWG. BY:

DWG. NO.:

50000HGSWHTG

NOTE :  
ALL RIGHTS RESERVED. THIS DRAWING OR ANY PART THEREOF MUST NOT BE REPRODUCED IN ANY FORM WITHOUT THE WRITTEN PERMISSION OF HIGHLAND TANK.  
HIGHLAND TANK SHALL BE RESPONSIBLE ONLY FOR ITEMS INDICATED ON THIS FABRICATION DRAWING UNLESS OTHERWISE NOTED. CUSTOMER IS RESPONSIBLE FOR VERIFYING CORRECTNESS OF SIZE / LOCATION OF FITTINGS , ACCESSORIES & COATINGS SHOWN ON THIS DRAWING