

GENERAL SPECIFICATIONS

NO. REQ'D: (1)  
CAPACITY: 50,000 GALLONS  
TYPE: HT, HIGHGUARD, SINGLE WALL, "J" SERIES  
MATERIAL: MILD CARBON STEEL  
FLOW RATE: 5000 GPM

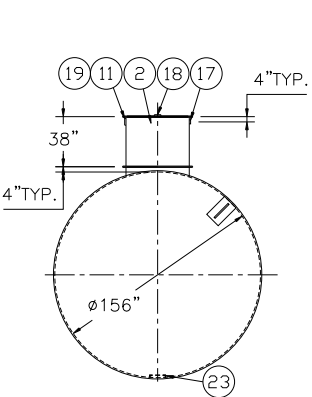
GAUGE:  
SHELL- 3/8"  
HEADS- 5/16"

SURFACE PREP:  
- SSPC NO.6 BLAST ALL EXTERIOR SURFACES  
- SSPC NO.10 BLAST ALL INTERIOR SURFACES  
OF WATER CHAMBER ONLY

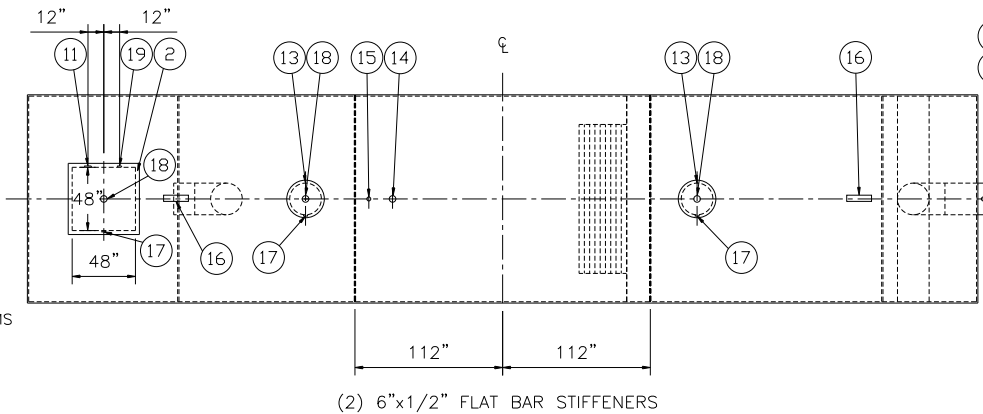
COATING: MATERIAL THICKNESS  
EXTERIOR- HIGHGUARD (75 MILS)  
INTERIOR- POLYURETHANE (15 MILS)  
INTERIOR OF WATER  
CHAMBER ONLY

CONSTRUCTION : LAP FIT AND WELD ALL EXTERIOR SEAMS  
OPERATING PRESSURE: ATMOSPHERIC

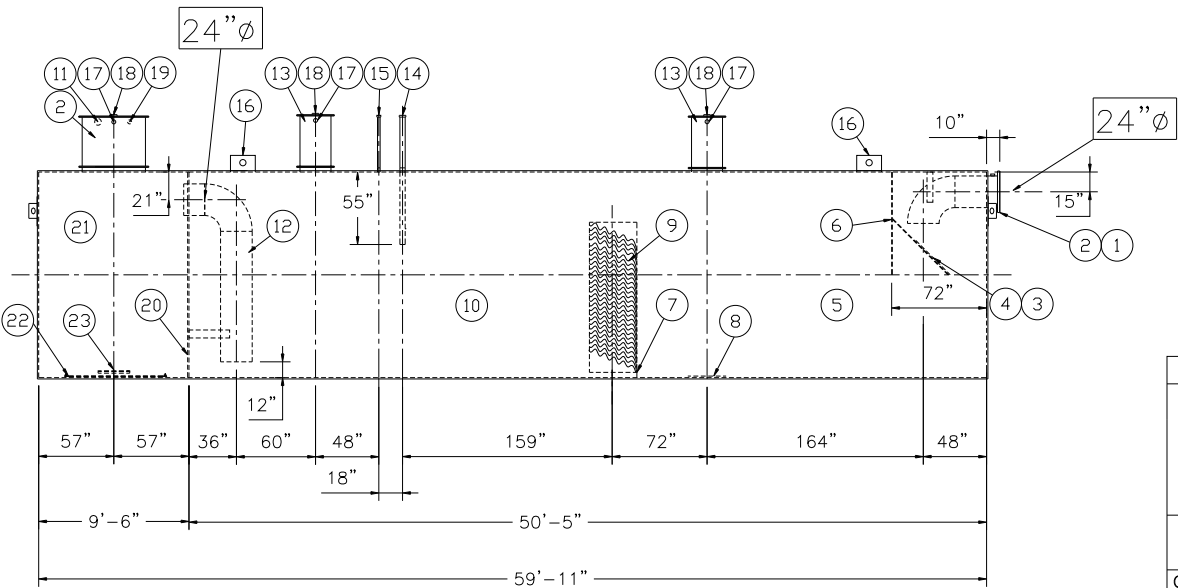
NOTES:  
1. POLYURETHANE HIGHGUARD TANK IS NOT APPROVED  
FOR THE STORAGE OF HEATED PRODUCTS  
2. 15000 VOLT SPARK TEST PROVIDED AT FACTORY  
3. ALL VENT PIPING BY INSTALLER  
4. CUSTOMER TO PROVIDE PUMPING INFORMATION  
FOR PROPER PUMP SIZING & PUMPOUT DESIGN.



END VIEW



PLAN



ELEVATION

PROVIDED EQUIPMENT

1. 150# R.F.S.O. FLANGE W/ 2" NPT FOR VENT
2. RECTANGULAR MANWAY W/ BOLT-ON EXTENSION SHIPPED LOOSE
3. VELOCITY HEAD DIFFUSION BAFFLE
4. WEAR PLATE
5. SEDIMENT CHAMBER
6. UNDERFLOW BAFFLE
7. SLUDGE BAFFLE
8. STRIKER PLATES
9. PARALLEL CORRUGATED PLATE COALESCER (CORELLA PVC PLATES) 3" PLATE SPACING
10. OIL/WATER SEPARATOR CHAMBER
11. 4" NPT FTG. FOR PUMP CONDUIT
12. OUTLET DOWNCOMER
13. 24" MANWAY WITH BOLT-ON EXTENSION SHIPPED LOOSE
14. 4" NPT FTG. FOR OIL PUMPOUT W/ INTERNAL PVC PIPE INSTALLED & RISER PIPE SHIPPED LOOSE
15. 2" NPT FTG. FOR LEVEL SENSOR W/ RISER PIPE SHIPPED LOOSE
16. LIFTING LUG
17. 2" NPT FTG. FOR VENT. TYP. ALL MANWAYS
18. 4" NPT FTG. FOR GAUGE W/ PLUG-TYP. ALL MANWAYS
19. 2" NPT FTG. FOR EFFLUENT WATER CHAMBER LEVEL SENSOR
20. 5/16" BULKHEAD
21. EFFLUENT WATER CHAMBER
22. INTERNAL RIBBON ANODE
23. ISOLATED PUMP MOUNT

REVISIONS



**Highland Tank**

U.S. Patent #4,722,800 Canadian Patent # 1,296,263  
#6,606,224 # 2,389,065

50000 GALLON OIL WATER SEPARATOR  
HT, HIGHGUARD ,SINGLE WALL,"J" SERIES

CUSTOMER:

PROJECT:

QUOTE NO:

CHK'D BY:

SCALE:

DATE:

DWG. BY:

DWG. NO.:

1/8"=1'-0"

8-10-05

50000HGSWHTCJ