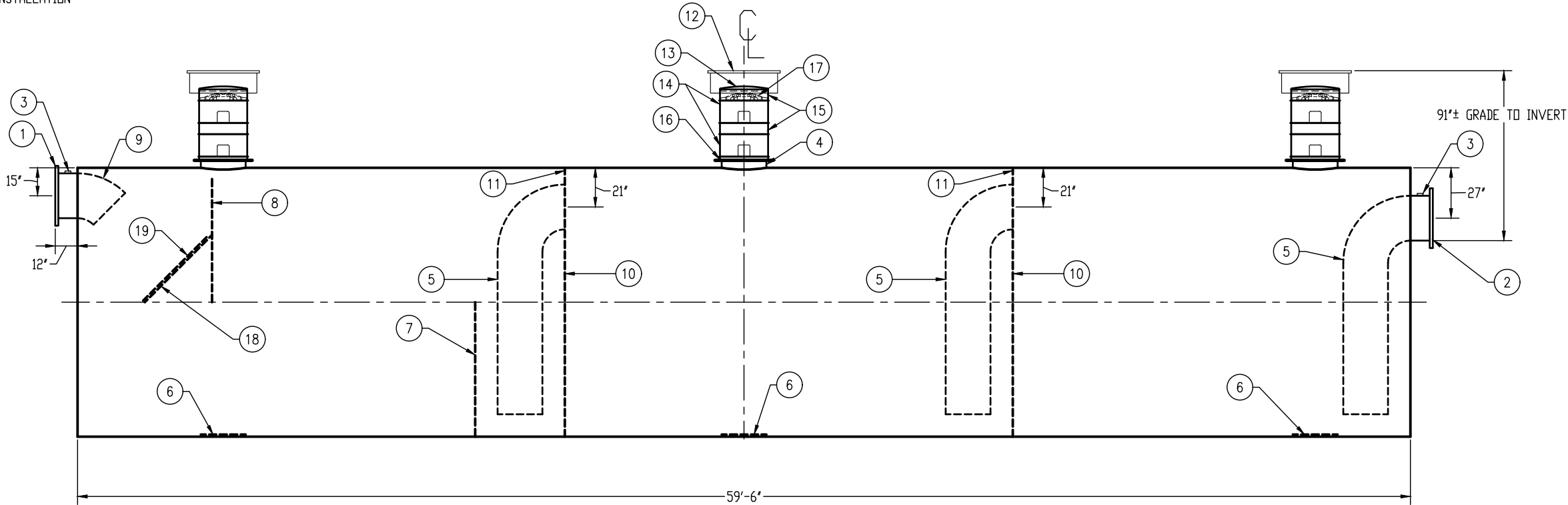


QUANTITY: ONE (1)
MODEL: OSI-50000-3
CAPACITY: 50,000 GALLONS
TYPE: SINGLE WALL, HIGHGUARD, UNDERGROUND
MATERIAL: 1/2" CARBON STEEL
MATERIAL BASED ON 60" MAXIMUM BURIAL DEPTH
LAP FIT AND WELD INTERIOR AND EXTERIOR SEAMS
TANK TEST: 3-5 PSI AIR TEST
SURFACE PREP: SSPC-SP 10 BLAST INTERIOR SURFACES
SSPC-SP 6 BLAST EXTERIOR SURFACES
EXT. COATING: HIGHGUARD POLYURETHANE - 75 MILS
INT. COATING: CHEMTANE 4200 PW (15 MILS DFT)
OPERATING PRESSURE: ATMOSPHERIC

Technical drawing of a spherical tank with a diameter of $\phi 144"$. The drawing includes the following dimensions and features:

- Vertical Manway:** Located at the top center, with a total height of $79" \pm$ GRADE TO INVERT. The manway assembly includes a top section of $12"$, a middle section of $52" \pm$, and a lower section of $38" \pm$. A typical section height is noted as $4"$ TYP.
- Lifting Lugs:** Two lifting lugs are attached to the tank shell, labeled with circled numbers 18 and 21. Each lug is connected to a base plate, labeled with circled number 20.
- Internal Structure:** A dashed rectangular outline is shown inside the tank, representing internal bracing or a platform.



NOTE: ALL RIGHTS RESERVED. THIS DRAWING, OR ANY PART THEREOF, MUST NOT BE REPRODUCED IN ANY FORM WITHOUT WRITTEN PERMISSION FROM THE HIGHLAND TANK. UNLESS OTHERWISE NOTED, HIGHLAND TANK SHALL BE RESPONSIBLE ONLY FOR ITEMS INDICATED ON THIS FABRICATION DRAWING. THE CUSTOMER IS RESPONSIBLE FOR VERIFYING THE CORRECTNESS OF THE TYPE, SIZE, AND LOCATION OF ALL FITTINGS, ACCESSORIES, AND COATINGS SHOWN ON THIS DRAWING.

(CONTINUED)

14. (2) 24"Ø x 12" STACKABLE RISER - ALL STACKABLE RISER COMPONENTS ARE PRE-ASSEMBLED AND COMPLETE MANWAY RISER IS SHIPPED LOOSE
15. (2) 24"Ø x 6" STACKABLE RISER
16. STACKABLE RISER ADAPTER RING & GASKET
17. STACKABLE RISER SAFETY SCREEN
18. DIFFUSION BAFFLE - 1/4"
19. 48" x 48" WEAR PLATE - 1/4"
20. (12) CDA-45 CONCRETE DEADMAN
21. (12) 12'-0" STEEL SAFETY DEADMAN HOLD-DOWN STRAPS WITH TURNBUCKLES AND LINERS



Highland Tank®

OIL/SAND INTERCEPTOR
50,000 GALLON TRIPLE-BASIN

CUSTOMER:

PROJECT:

SCALE:

DATE: 0 / 15 / 10

DWG. BY:
MOC

DWG. NO.:
05

ORDER:

DWG. NO.:
OSI-50000-3

DIMENSION TOLERANCE: $\pm 1'$