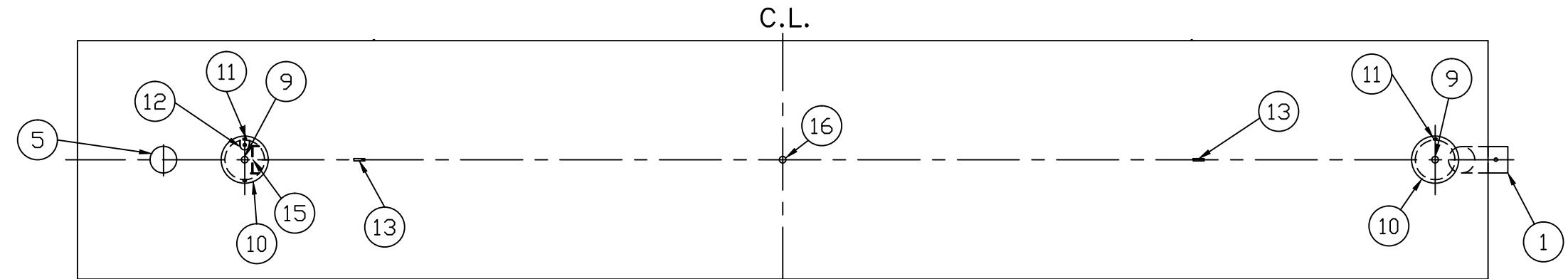


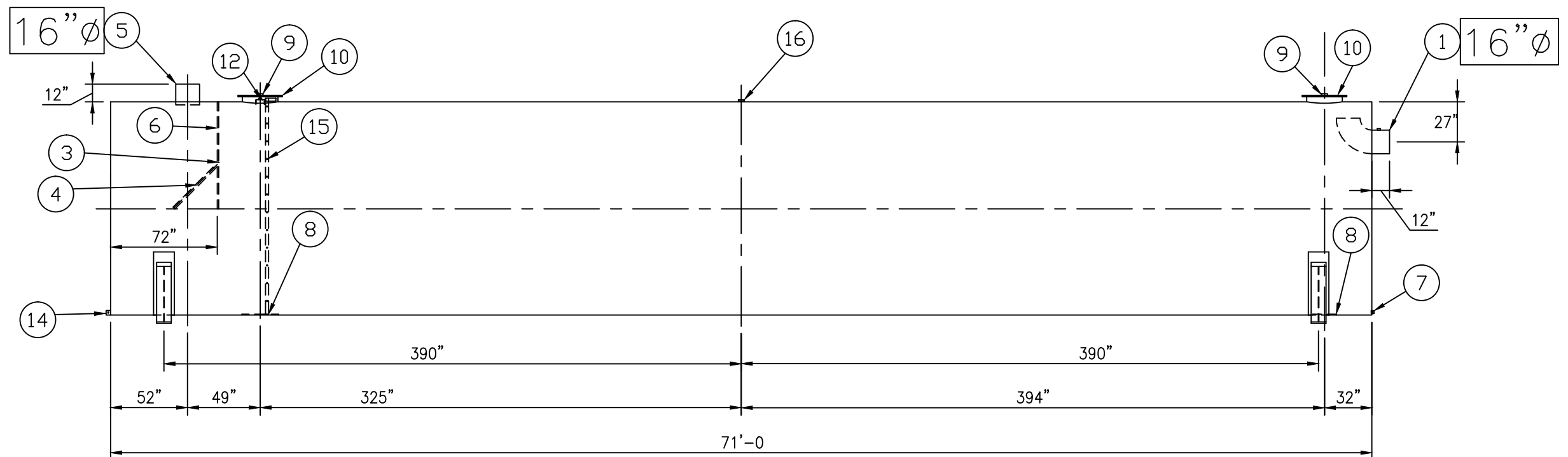
END VIEW

PROVIDED EQUIPMENT

1. 16"Ø PIPE STUB W/ 2" NPT FOR VENT (OVERFLOW SKIMMER)
2. 2"Ø FTG. FOR VENT
3. VELOCITY HEAD DIFFUSION BAFFLE
4. WEAR PLATE
5. 16"Ø PIPE STUB (INLET)
6. UNDERFLOW BAFFLE
7. 2"Ø FULL CPLG. FOR PUMP MOUNTING
8. STRIKER PLATES
9. 4"Ø FTG. FOR GAUGE WITH PLUG
10. 24"Ø MANWAY
11. 2"Ø FTG. FOR CONDUIT
12. 2"Ø FTG. W/ MOUNT FOR LEVEL SENSOR
13. LIFTING LUG
14. GROUNDING LUG
15. HIGHLAND STANDARD INTERNAL LADDER
16. 4"Ø FTG. FOR VENT



PLAN



ELEVATION

GENERAL SPECIFICATIONS


NO. REQ'D: (1)
 CAPACITY: 60,000 GALLON
 TYPE: SINGLE WALL, ABOVEGROUND
 MATERIAL: MILD CARBON STEEL
 GAUGE:
 SHELL- 3/8"
 HEADS- 3/8"

SURFACE PREP:
 SSPC-SP 6 BLAST EXTERIOR
 SSPC-SP 10 BLAST INTERIOR

COATING: MATERIAL / THICKNESS
 EXTERIOR-
 WHITE URETHANE (3-5 MILS)
 INTERIOR-
 HighDRO®-LINER PLUS POLYURETHANE (15 MILS)

CONSTRUCTION : LAP FIT & WELD ALL EXTERIOR SEAMS
 OPERATING PRESSURE : ATMOSPHERIC
 ALL VENT PIPING BY INSTALLER
 LIFTING LUGS PLACED AS NEEDED PER FAB SHOP

NOTE :
 ALL RIGHTS RESERVED. THIS DRAWING OR ANY PART THEREOF MUST NOT BE REPRODUCED IN ANY FORM WITHOUT THE WRITTEN PERMISSION OF HIGHLAND TANK.
 HIGHLAND TANK SHALL BE RESPONSIBLE ONLY FOR ITEMS INDICATED ON THIS FABRICATION DRAWING UNLESS OTHERWISE NOTED. CUSTOMER IS RESPONSIBLE FOR VERIFYING CORRECTNESS OF SIZE / LOCATION OF FITTINGS , ACCESSORIES & COATINGS SHOWN ON THIS DRAWING

 Highland Tank®	
HighDRO® WATER STORAGE TANKS	
60,000 GALLON RAINWATER COLLECTION TANK	
CUSTOMER:	
PROJECT:	
QUOTE NO:	CHK'D BY:
SCALE: NTS	DATE: 10/1/10
DWG. BY:	DWG. NO: 60000AHSWHDRECT144